

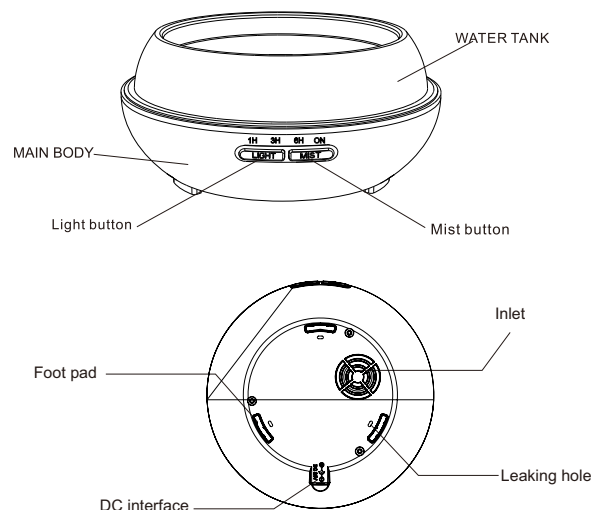
英

Aroma Diffuser User Manual

Aroma Diffuser

User Manual

Dear customer
Thank you for choosing the Aroma Diffuser. Please read the following instructions carefully and keep them for future use.

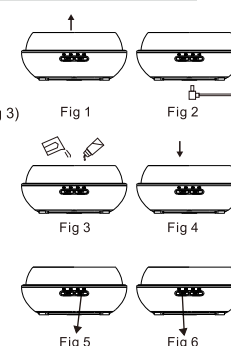


Aroma Diffuser

User Manual

OPERATION

1. Please take off the tank cover. (Fig 1)
2. Plug the power cord into the product. (Fig 2)
3. Fill the water tank with a measuring cup, taking care not to exceed the maximum amount of water, and drop in the essential oils vertically, recommended adding 0.1ml - 0.15ml essential oils per 100ml of water. (Fig 3)
4. Put the cover vertically. (Fig 4)
5. Mist Function:
Press the Mist Button.
Press once : 1Hour timer setting.
Press twice: 3Hours timer setting.
Press three times : 6Hours timer setting.
Press four times: Continuous spray.
Press five times: Turn off the mist function. (Fig 5)
6. After Connect of the Aroma diffuser ,there is the Small Mist by default. Press the Mist Button around 2 seconds, it will switch into the Heavy Mist. (Fig 5)
7. Choose Lighting
① Press "Light" button once: Seven-colour LED light cycle
② Press "Light" button the second time: Fixed colors (each color has a low light/bright light mode)
③ Long press the "Light" button for 3 seconds to turn off the colored light. (Fig 6)



- Note**
- The strength of the mist will vary depending on the type of water, air humidity, temperature and airflow.
 - With low water level protection design, when the water is running out, the diffuser will automatically turn off the power.
 - For essential oil/fragrance, we suggest using pure or water-soluble one.
 - If the essential oil needs to be changed, please clean it according to the care section of the product.

Aroma Diffuser

User Manual

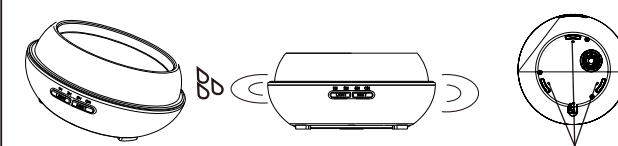
PRECAUTIONS

- Product use time: 8 hours.
- The amount and intensity of mist produced will vary, but this is not unusual and should not be considered as a fault.
- Factors that affect this include water type, humidity, temperature, air currents.
- Auto power off when water runs out.
- Before replacing another essential oils, follow the maintenance part of the clean-up products.

ACCIDENTAL LEAKAGE

In the event of the unit being knocked over or tipped during use, please follow the steps as below to avoid malfunction:

1. Unplug the unit and remove cover.
2. Pour out any remaining water from the water tank.
3. Shake the unit gently to drain water, and then keep it natural air drying for at least 24 hours.



OUTLET

Aroma Diffuser

User Manual

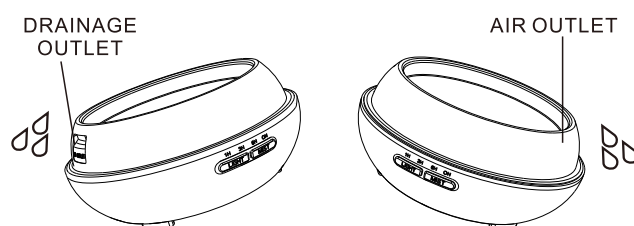
CLEANING AND MAINTENANCE

After using 5-6 times, or 3-5 days, please clean the product as follow:

- Unplug the power, empty all the water from the tank and wipe the product with a clean, soft cloth.
- Pour warm water mixed with a little kitchen detergent into the water tank and gently shake the unit to clean.
- Drain the waste water (the side without holes) and air dry naturally.

Note:

- * Do not pour water from the side of the vent hole, it may damage the aromatherapy machine due to water entering
- * Do not use the medical thinner phenylglycol and neutral detergents.



Aroma Diffuser

User Manual

PRECAUTIONS

Please read the following precautions before using. These listed below are intended to avoid damage to the product.

- Unprofessional staff should not repair or fix the product. If the unit need repair, please contact the product sales office.
- Do not intentionally hurt, twist, stretch the electric wires of the power adapter. Do not put wires at high temperature. Do not use heavy pressure. wire, also do not use clip to clip or repair wire.
- If the wire is damaged, or the adapter socket is loose, please stop using.
- If there is a peculiar smell, noise or abnormal heat, the product or adapter has been failed. Please pull out the adapter plug from the outlet quickly and stop using it.
- Do not put the adapter in the water. Nor place adapters in damp areas, such as the changing room, greenhouse, etc.
- For better usage, please pour out the whole water in the tank from drainage side after each use, then use soft cloth to wipe it clean and dry.
- Please do not make the mist directly to the TV, furniture, clothes or wall.
- Place the unit in the plane position, do not put in carpet, cushion, or somewhere not smooth.
- Do not cover the product when use, or the mist would damage the diffuser.
- When the hands are wet, please don't touch the bottom of the product.
- The children should use the diffuser under the guidance of the adults.

Aroma Diffuser

User Manual

TROUBLESHOOTING

Please refer to the table below in the event of the product operating abnormally:

Problem	Check	Solution
Cover and inner cover are not installed properly?	Is there enough water in the tank?	Please add water to the tank.
	Is the power cord connected properly?	Please disconnect, check cables and re-connect carefully.
	Not enough water or too much water?	Please add a suitable amount of water to the tank, water must never be filled over the (300ML -500ML MAX) line.
	Cover and inner cover are not installed properly?	Please refer to maintenance instructions to remove and re-install correctly, so that the mist can be released freely.
Water leakage from product	Dirt on the air suction port on the underside of the base?	If too much dust in the air suction port, the mist will be restricted to come out, just clean it.
	Cover is not installed properly?	Remove and reinstall correctly, so that the mist can be released freely.
If the appliance is knocked over or tipped over during use, follow these steps to avoid malfunction:	Low temperature or high humidity?	Under these conditions, the mist may condense quickly into water droplets.
		1. Disconnect the power supply and remove the cover. 2. Drain the water and allow it to dry naturally for at least 24 hours.

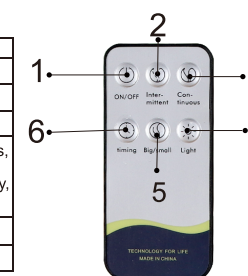
Aroma Diffuser

User Manual

Due to the improvement of product specifications, it may be improved without notice.

Power: Input(Output)	AC100-240V/50-60HZ/DC24V 500MA/650MA
Tank Capacity	300ML/500ML
Electric consumption	8W
Time Mode	1H/3H/6H/ON
LED Light	Colorful Lights
Materials	PP/ABS
Ultrasonic Frequency	2.4MHz
Length of Cord	150CM

	Key name	Functional description
1	ON/OFF	ON/OFF
2	Intermittent	Mist spray every 30 seconds
3	Continuous	Continuous mist
4	Light	Press it firstly, turn on the lights, 7 colors change automatically. Press the Light button secondly, choose the colors.
5	Big/Small	Big and small mist cycles
6	Timing	1H/3H/6H/ON



Please ignore the instructions for non remote control products.

Aroma Diffuser