

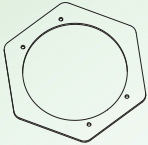
# ASSEMBLY INSTRUCTIONS



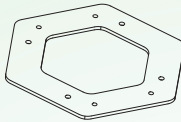
## POWERSPLIT XL

MODEL NO: FPSDE1803

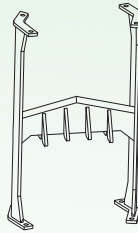
 **IMPORTANT! READ CAREFULLY AND KEEP FOR FUTURE REFERENCE**



Top Base  
(1pc)



Bottom Base  
(1pc)



Support  
(1pcs)



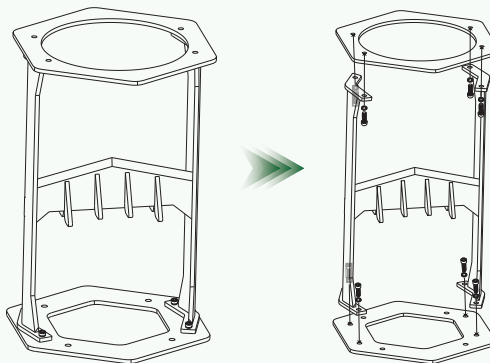
Internal Hexagonal Bolt  
(8pcs)



Spring Washer  
(8pcs)

### INSTALLATION GUIDE

1. Check all accessories and confirm there are no missing parts
2. Pre-install the base and support
3. Install the screws and metal washers. Please make sure all screws are installed tightly.



## PRODUCT MAINTENANCE AND CLEANING

- ★ Clean the log splitter regularly with a damp cloth and remove wood residue and dirt to ensure long-lasting and smooth operation.

## RECOMMENDATION FROM THE FORSTIX TEAM

- ★ Use a hammer that weighs at least 2 kg to split wood.

**Tip:** The heavier the hammer, the less effort is needed to split the wood.

## CONTACT AND FEEDBACK

The Forstix team sincerely thanks you for your purchase and the trust you have placed in us! We wish you great joy and success using the manual log splitter and splitting wood.

Feel free to share your experience on Amazon. Your feedback is very important to us.

If something is not to your satisfaction or if you have any questions, please do not hesitate to contact us at the following email address: **info@forstix.de**