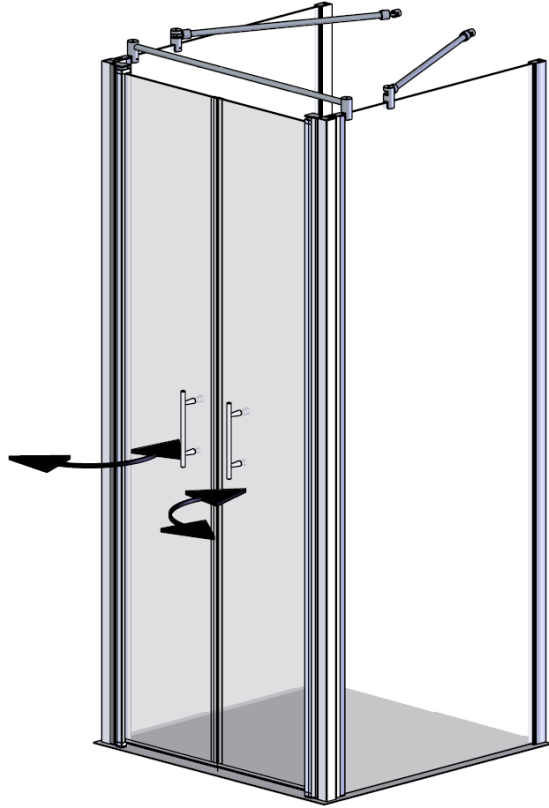


MAL 110UH

Achtung! Gläser niemals ungeschützt auf den Boden stellen.
Verletzung der Glaskante führt zu Glasbruch.

Caution! Never put glass walls on the floor without protection.
Damaging the glass edges results in breaking of the glass.

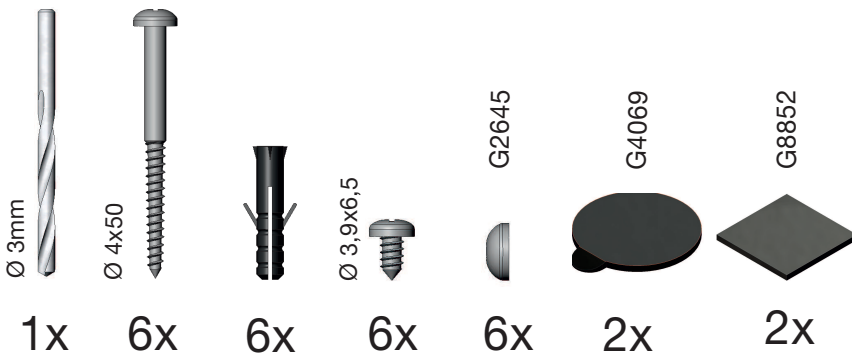
Attention! Jamais placer des parois de douche en verre au sol sans protection. Des verres endommagés casseront.



Die abgebildeten Formen der Profile und Griffe dienen der schematischen Darstellung und entsprechen nicht dem tatsächlichen Lieferumfang!



Mitgeliefertes Montagematerial
supplied assembly material
matériaux pour assemblage

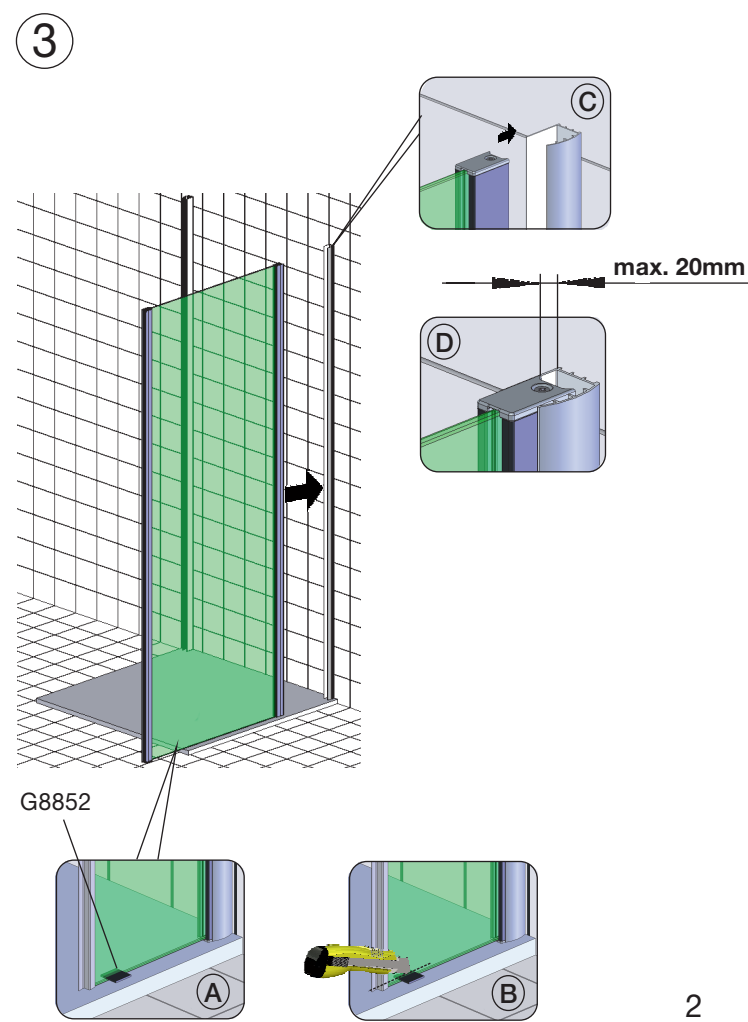
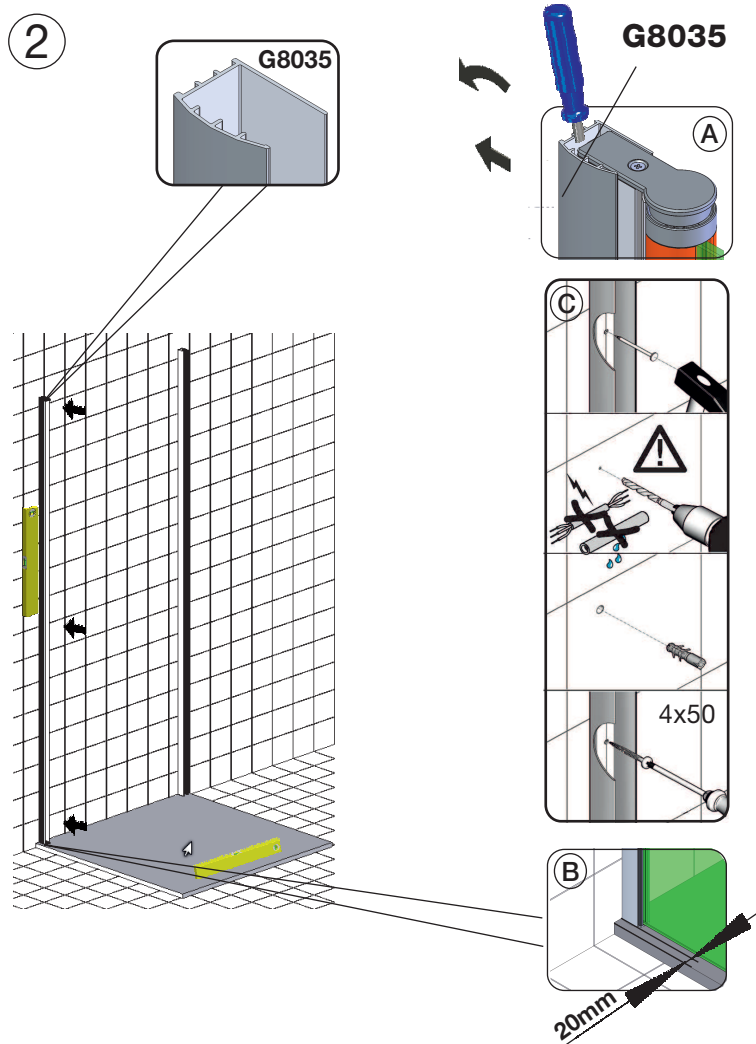
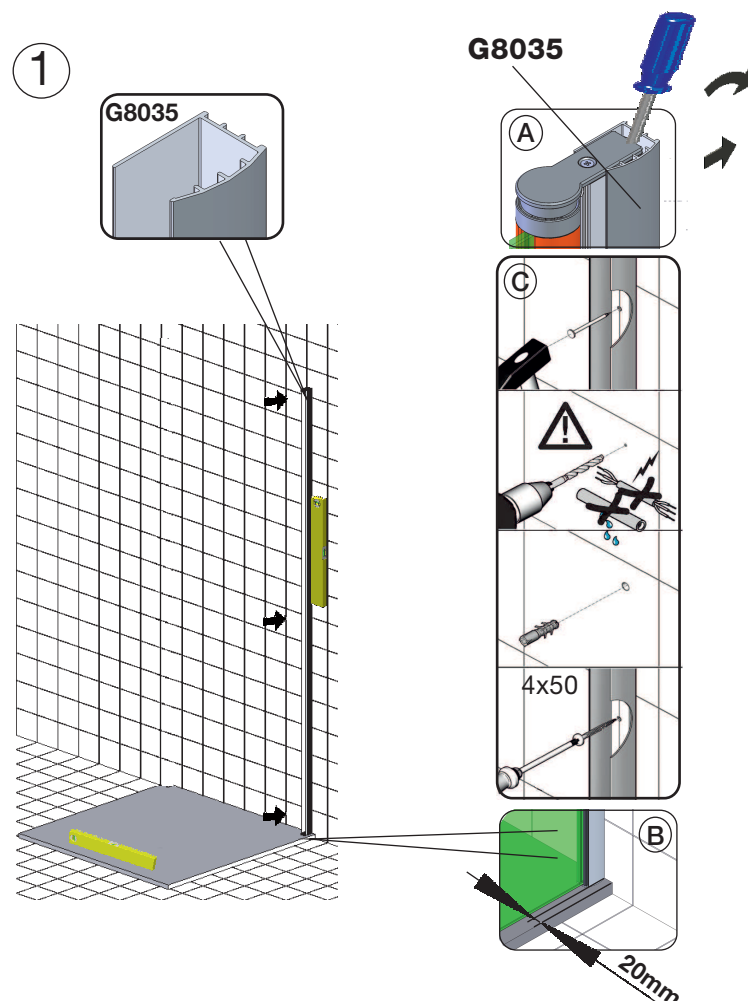
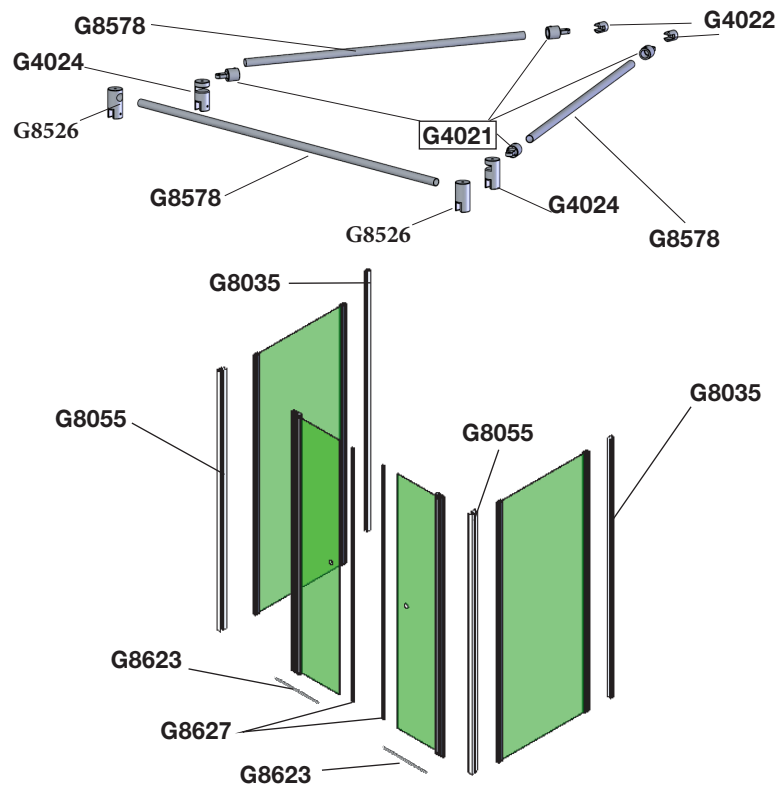


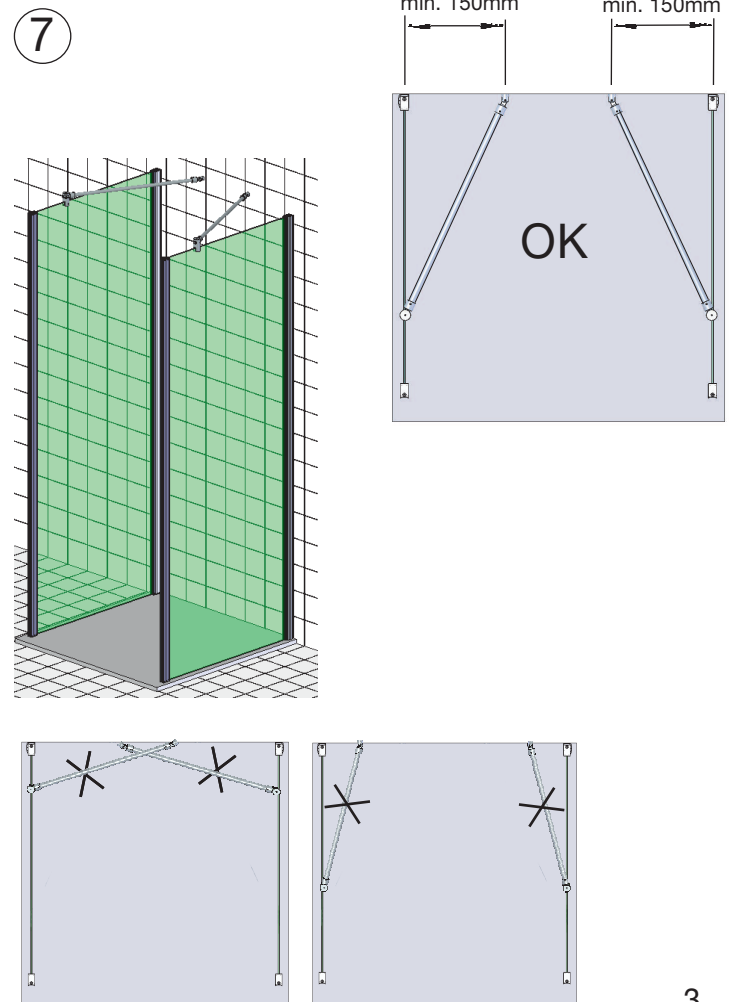
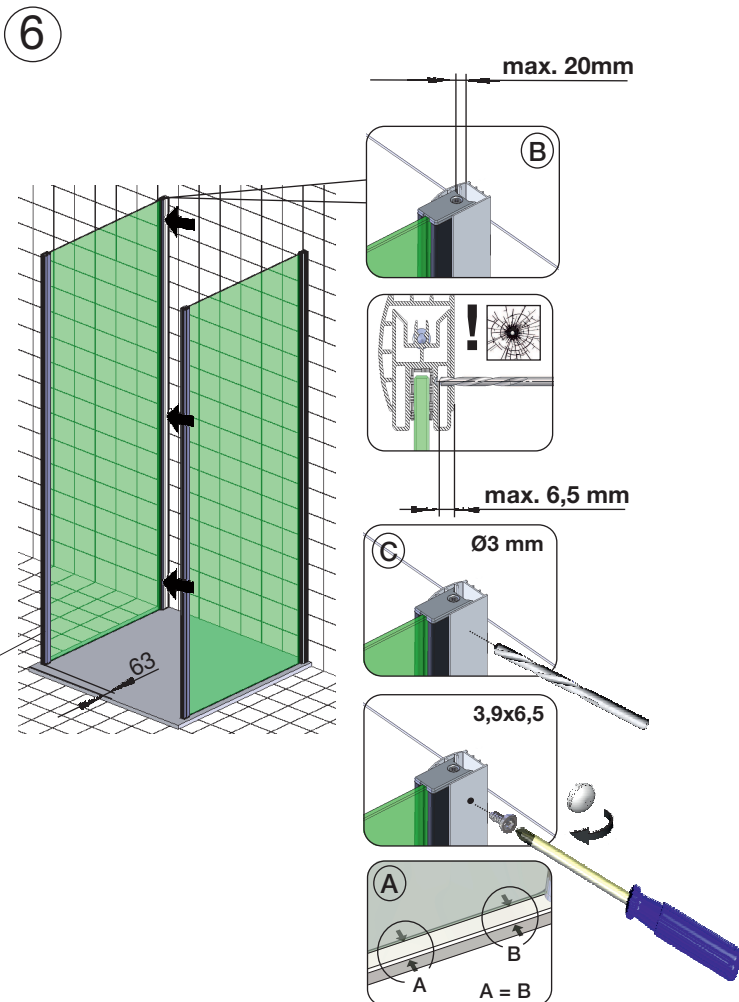
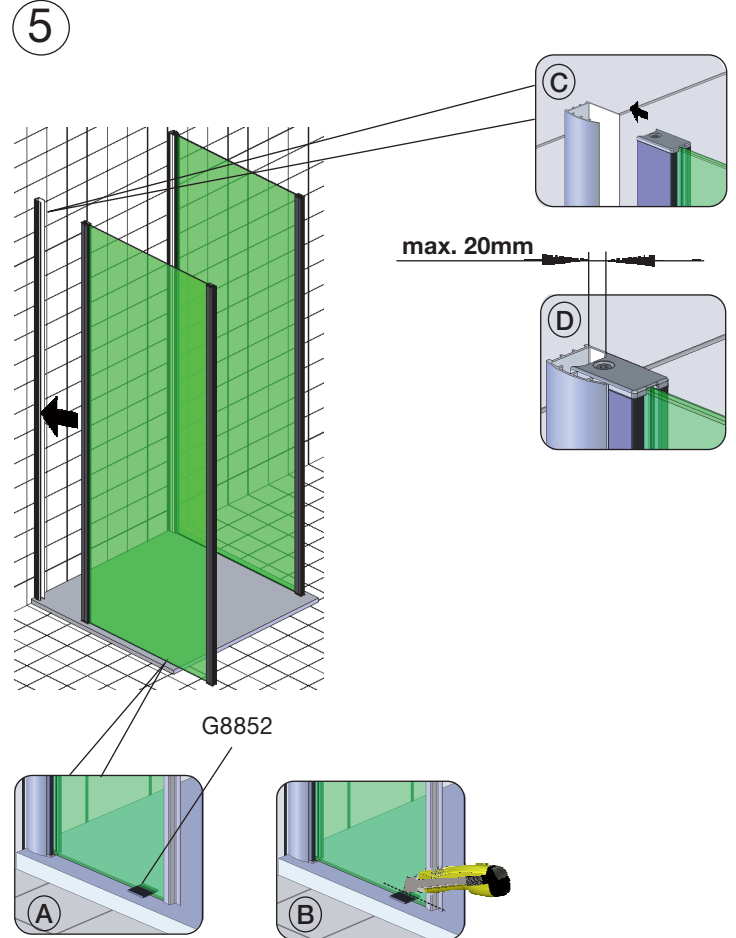
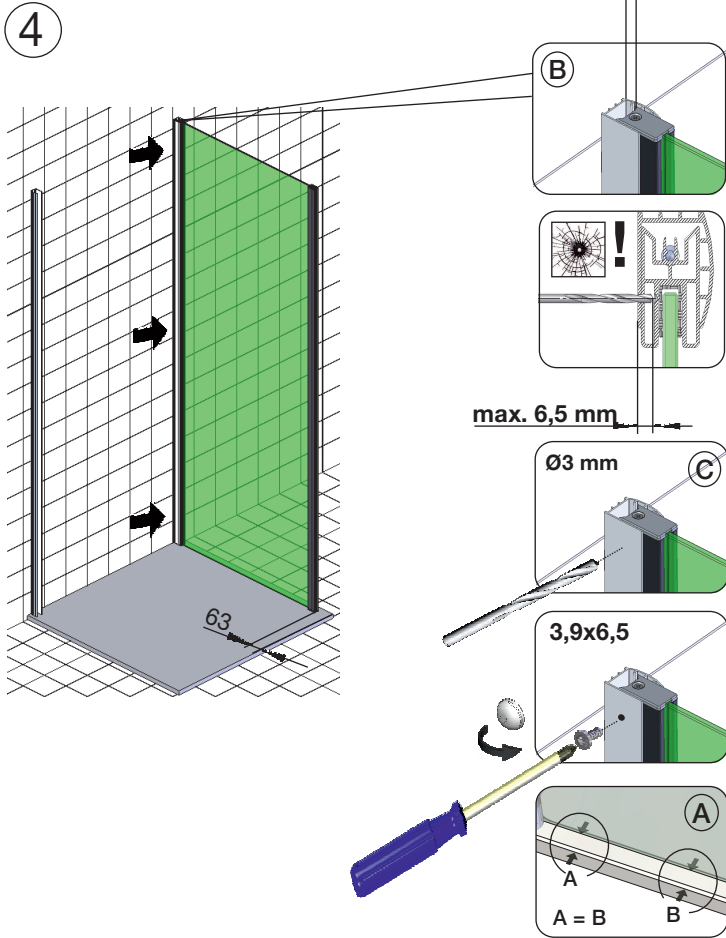
Zum Aufbau benötigen Sie
for mounting you need
pour l'installation il vous faut



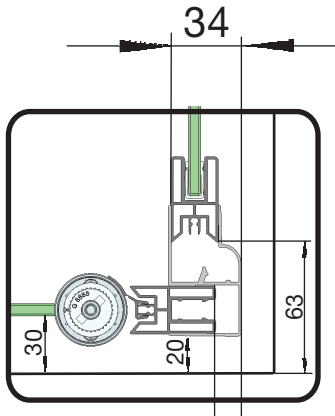
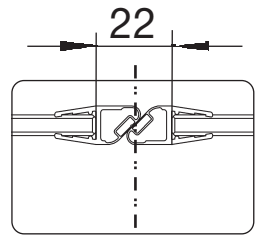
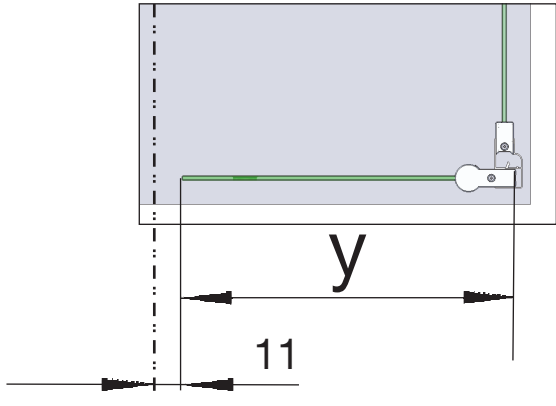
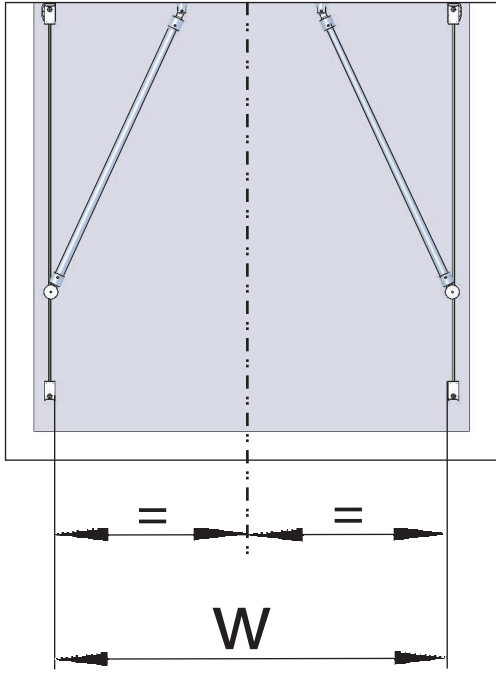
5 Jahre
Garantie

MAL 110UH





8



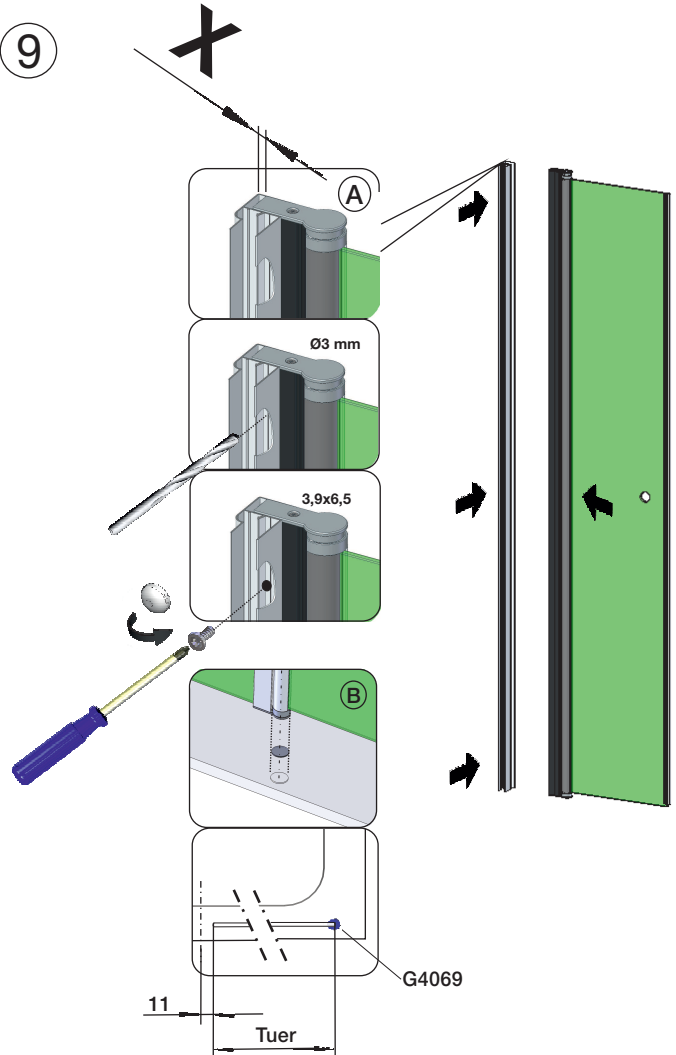
$y =$	
$\frac{W}{2} =$	

$X =$	
-------	--

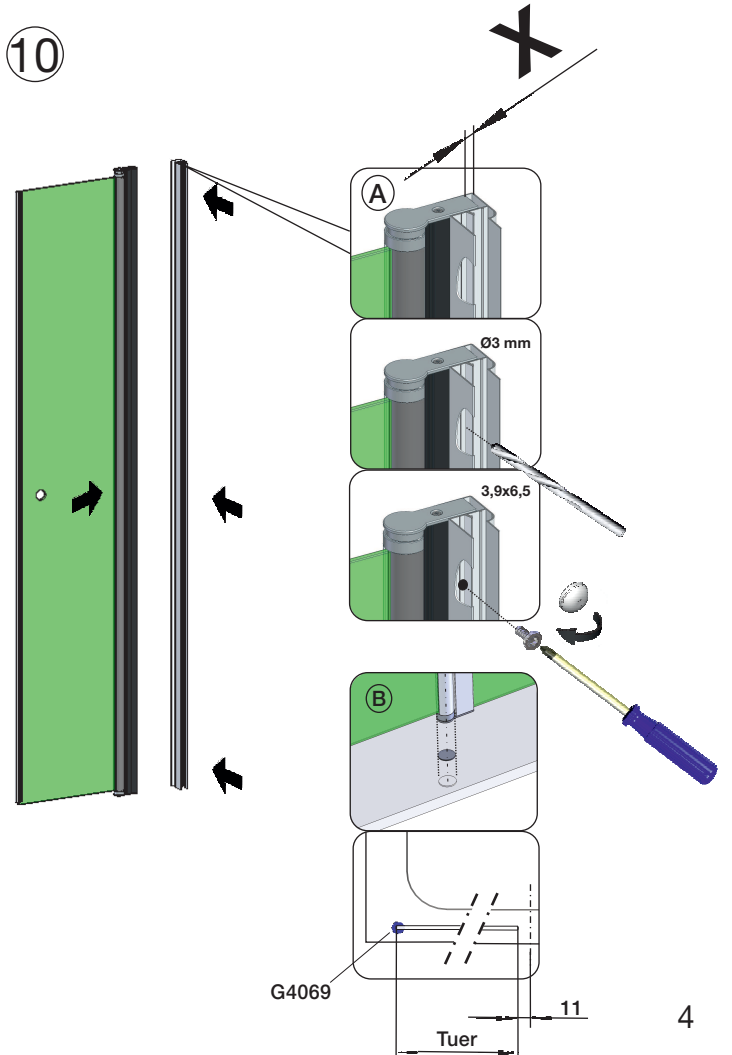
$$X = \frac{W}{2} + 34 - 11 - y$$

X Standard = 5,5 mm
 X max. = 20,0 mm

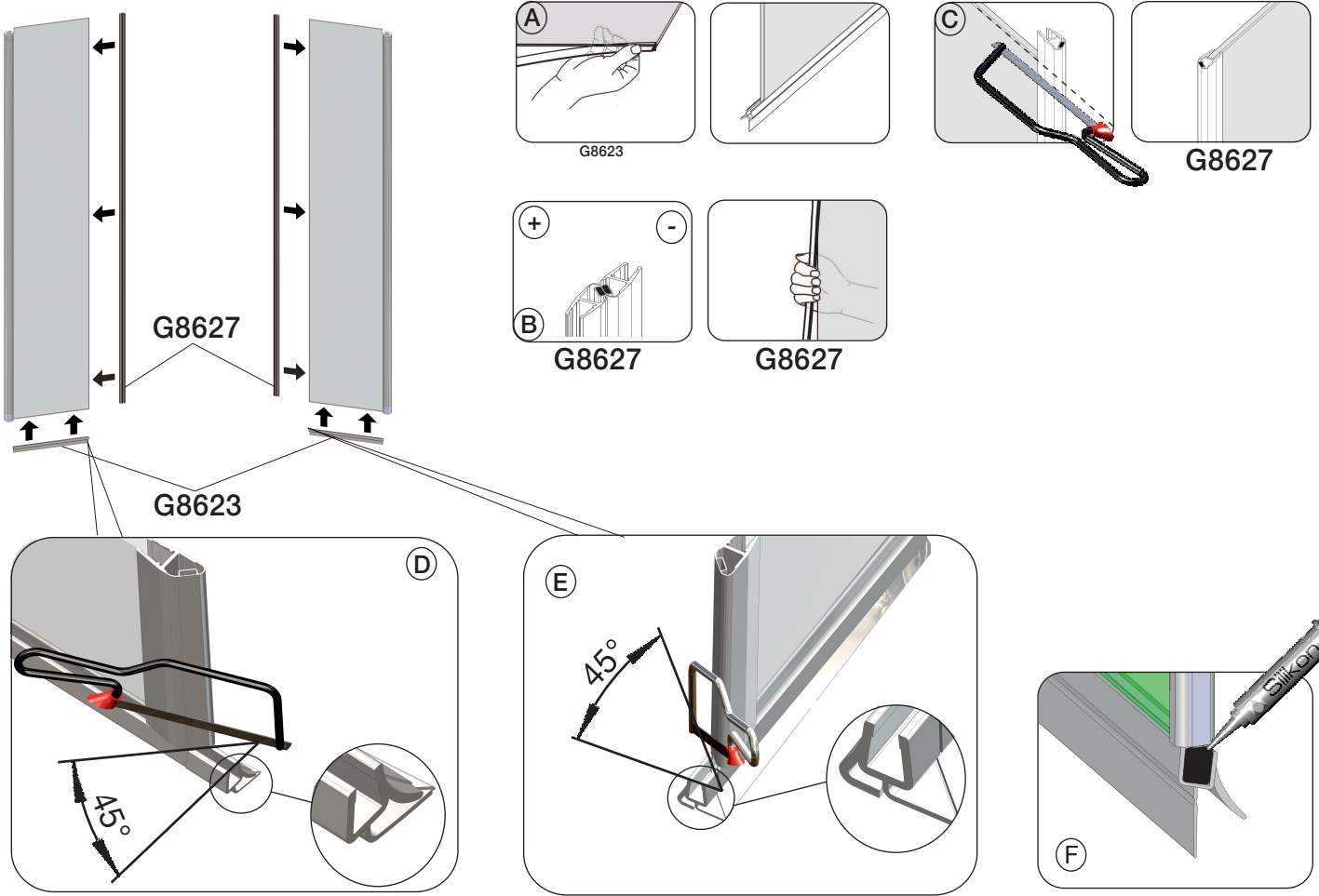
9



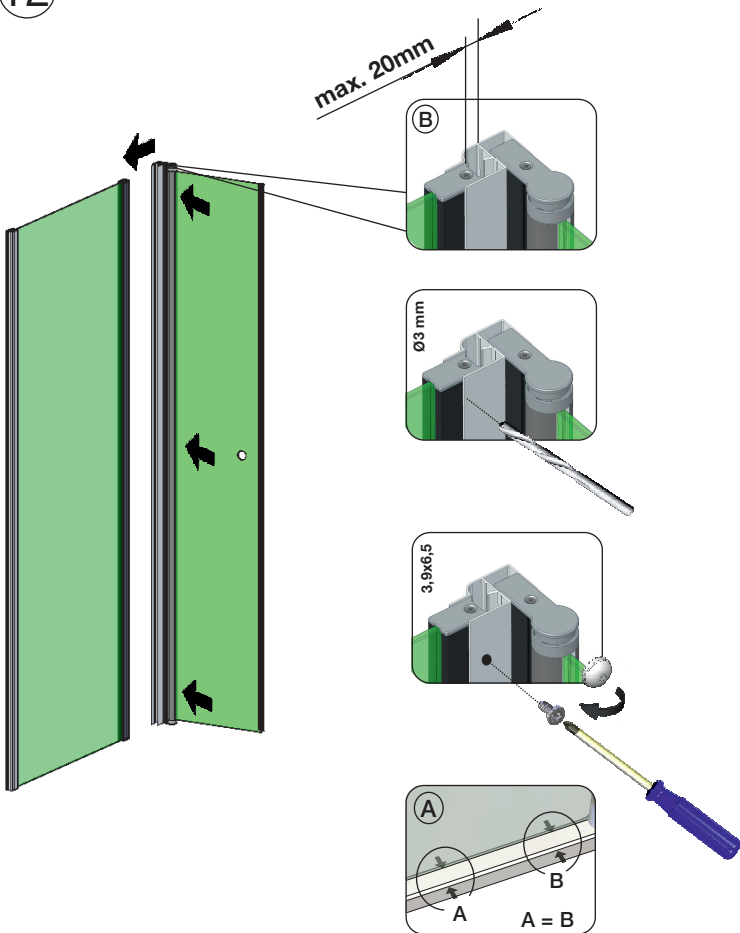
10



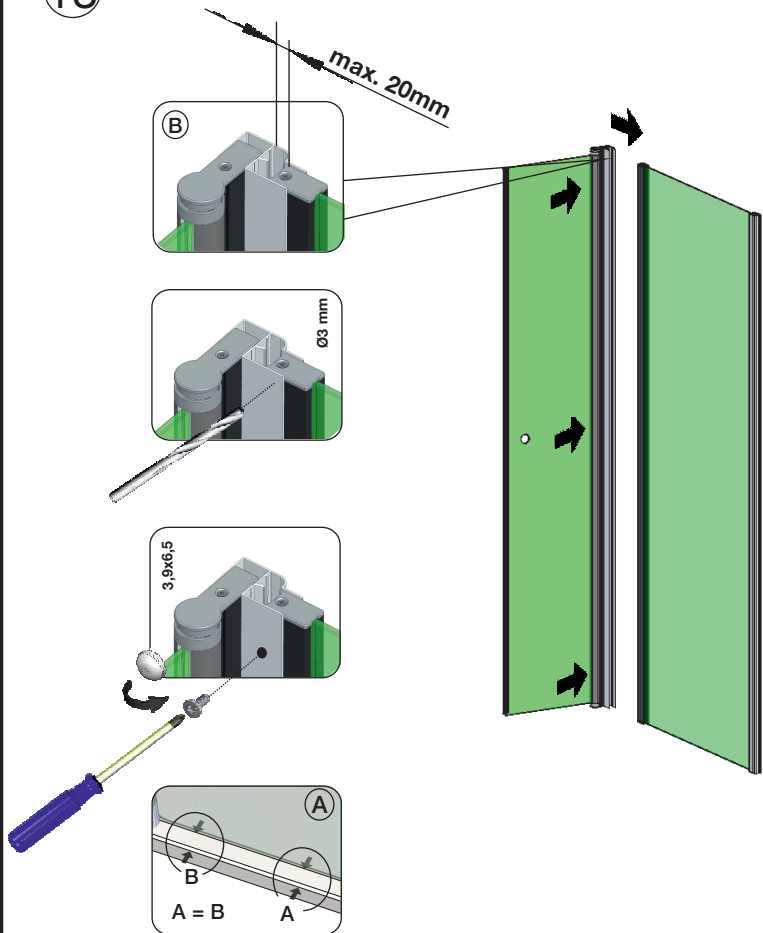
11



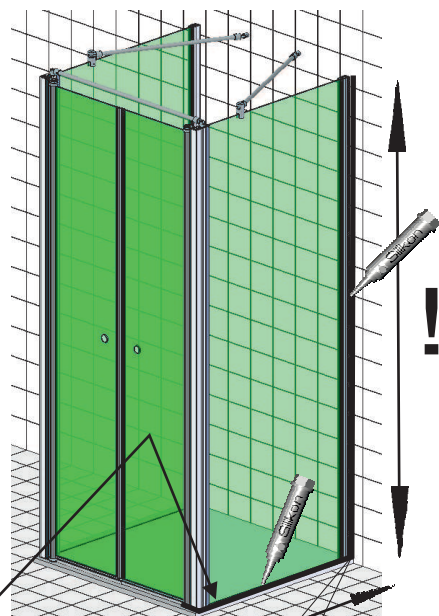
12



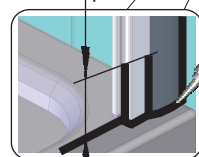
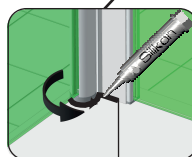
13



14

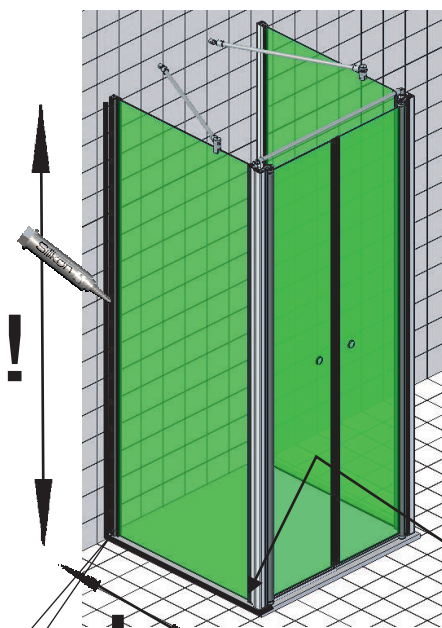


100mm

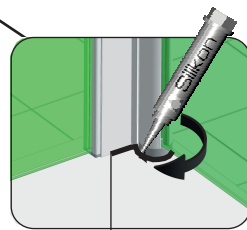
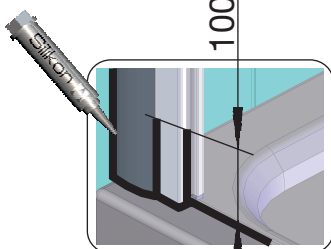


STOP !

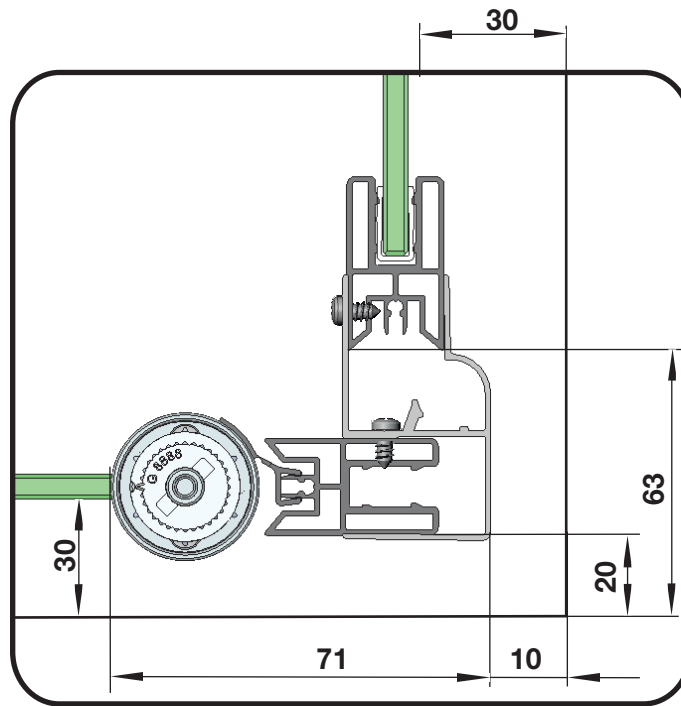
15



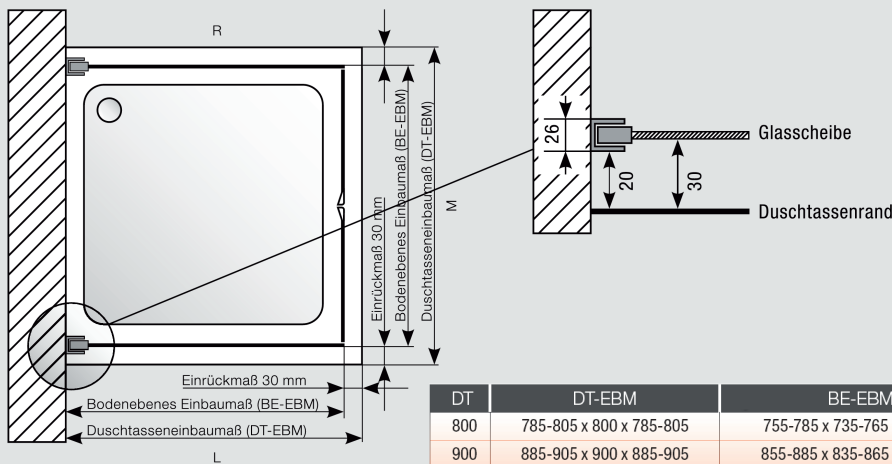
100mm



STOP !

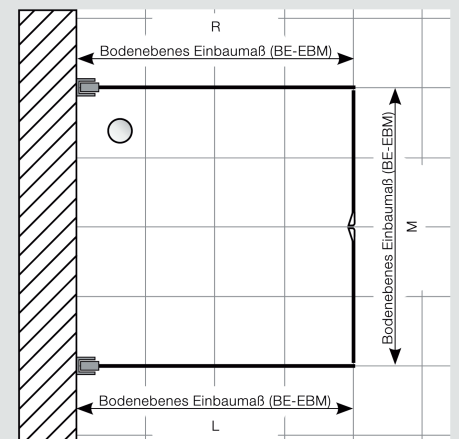


Montage auf Duschtasse



DT	DT-EBM	BE-EBM
800	785-805 x 800 x 785-805	755-785 x 735-765 x 755-785
900	885-905 x 900 x 885-905	855-885 x 835-865 x 855-885
1000	985-1005 x 1000 x 985-1005	955-985 x 935-965 x 955-985

Montage Bodeneben



EG-Konformitätserklärung
EC Declaration of Conformity

Hersteller/ Name und Adresse: GEO Produkte GmbH
Manufacturer/ name and address: Friedrichsfelder Straße 27
68723 Schwetzingen

Wir erklären in alleiniger Verantwortung:
We declare under our sole responsibility:

Produktbenennung: Duschabtrennung mit ESG
oder Kunststoffglas
product designation: shower enclosure with
tempered glass and acrylic-glass

Typ / Modell: alle Modelle
type / model: all models

stehen in Übereinstimmung mit den Bestimmungen der im Folgenden
genannten Richtlinie und Standards:
*are in conformity with the provisions of the following regulations and
standards:*

EN 14428:2004 + A1:2008



GEO Produkte GmbH
Friedrichsfelder Straße 27
68723 Schwetzingen /Germany
Tel. +49(0)6202 20930
FAX +49(0)6202 209399

13

DE2013/01

www.geoprodukte.com/service/leistungserklärung.html/

EN 14428

Duschabtrennung mit Einscheiben Sicherheitsglas oder Kunststoffglas
Shower wall made of ESG tempered safety glass or sythetic glass

Reinigbarkeit:
cleanability: Bestanden
passed

Bruch Eigenschaften:
impact resistance: Bestanden
passed

Dauerhaftigkeit:
durability: Bestanden
passed