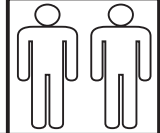




D - Montageanleitung GB - Assembly instructions NL - Handleiding voor de montage
 PL - Instrukcja montazu TR - Montaj talimatu RU - Инструкция по монтажу
 RO - Instructiuni de montaj IT - Istruzioni di montaggio FR - Notice de montage
 SK - Navod na monta CZ - Monta ni navod HU - Szerelesi utmutato HR - Upute za montažu
 SI - Navodila za montažo BG - Инструкция за сглобяване



1/4

Name-Naam-Nazwa-Isim-Название-Nume-Nome-Nom-Názov-Název-Nev-Ime-Име

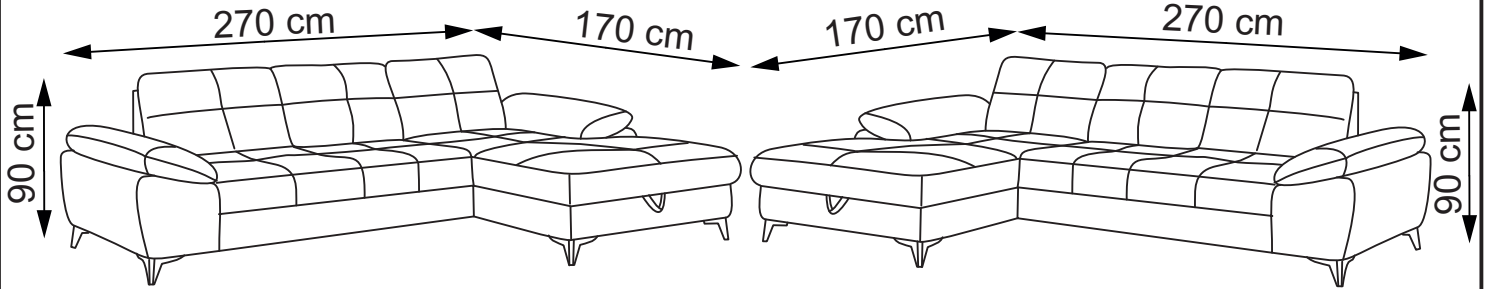
AUCKLAND 2F.RECBVK/RECBVK.2F



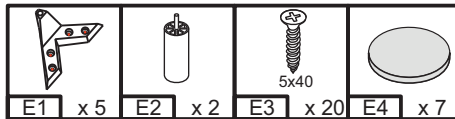
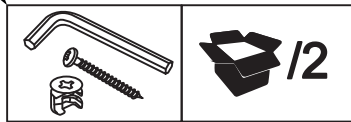
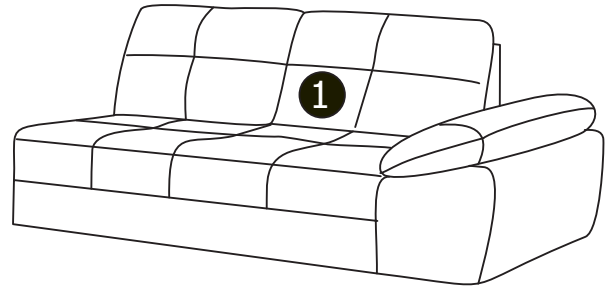
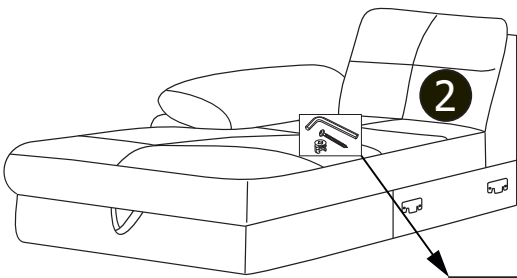
2F.RECBVK

RECBVK.2F

! ± 2 cm



				PCS	
1	78	172	102	x1	1/2
2	78	170	105	x1	2/2

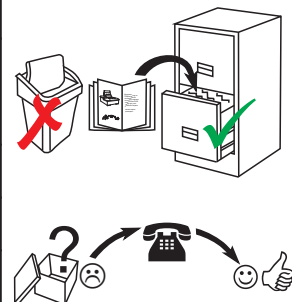


Service-Dienstverlening-Serwis-Servis-Сервисная служба-Serviciu-Servizio-Služby-Szerviz-Storitev-Обслужване

Typ-Tyре-Tip-Tip-Tastati-Tipo-Tipus

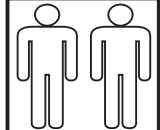
E1	G2	J1
E2	G3	J2
E3	H1	C1
E4	H2	C2
E5	L1	
G1	L2	
G2	L3	

Serien-/Chargen-Nr.-





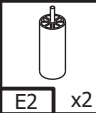
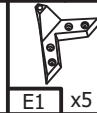
D - Montageanleitung GB - Assembly instructions NL - Handleiding voor de montage
 PL - Instrukcja montazu TR - Montaj talimatu RU - Инструкция по монтажу
 RO - Instructiuni de montaj IT - Istruzioni di montaggio FR - Notice de montage
 SK - Navod na monta CZ - Monta ni navod HU - Szerelesi utmutato HR - Upute za montažu
 SI - Navodila za montažo BG - Инструкция за сглобяване



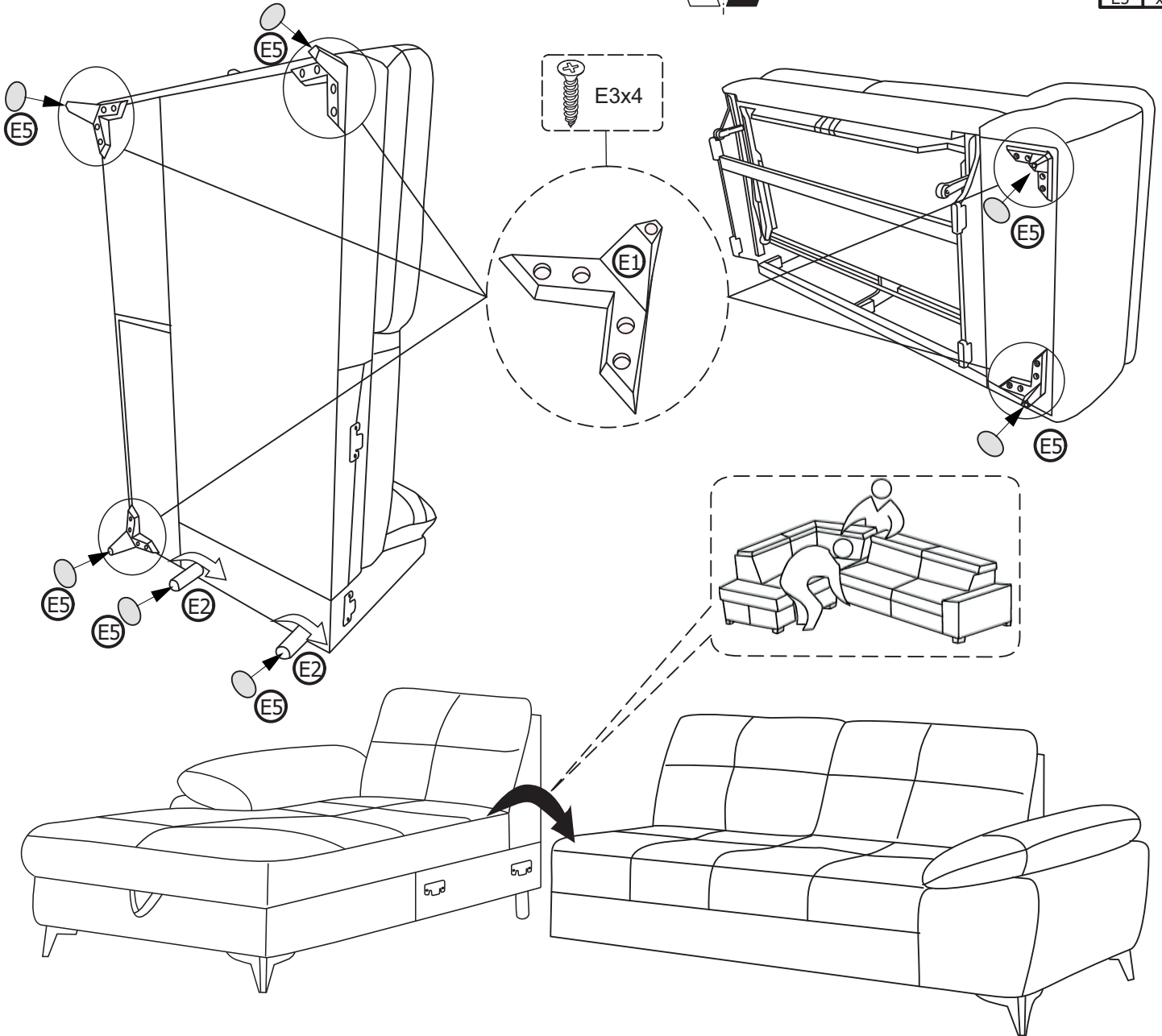
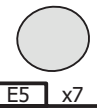
2/4

Name-Naam-Nazwa-Isim-Название-Nume-Nome-Nom-Názov-Název-Nev-Ime-Име

AUCKLAND 2F.RECBVK/RECBVK.2F



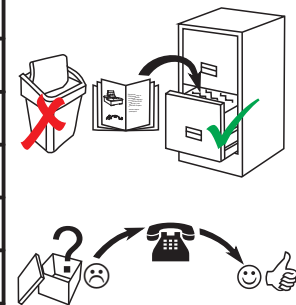
RECBVK.2F 2F.RECBVK



Service-Dienstverlening-Serwis-Servis-Сервисная служба-Assistenza-Szerviz

Typ-Typе-Tip-Tip-Tipus-Tipo 

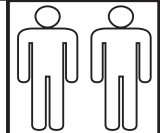
E1	G2	J1
E2	G3	J2
E2	H1	C1
E3	H2	C2
E4	L1	
E5	L2	
G1	L3	



Serien-/Chargen-Nr.-



D - Montageanleitung GB - Assembly instructions NL - Handleiding voor de montage
 PL - Instrukcja montazu TR - Montaj talimatu RU - Инструкция по монтажу
 RO - Instructiuni de montaj IT - Istruzioni di montaggio FR - Notice de montage
 SK - Navod na montáž CZ - Montážní návod HU - Szerelési utmutató HR - Upute za montažu
 SI - Navodila za montažo BG - Инструкция за сглобяване

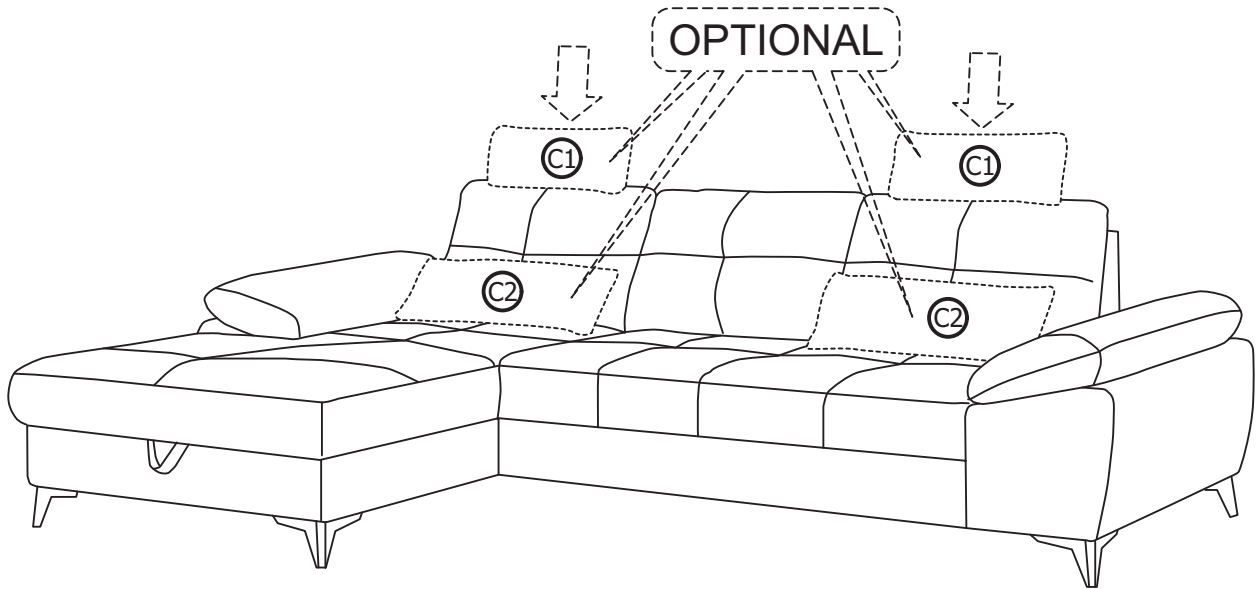
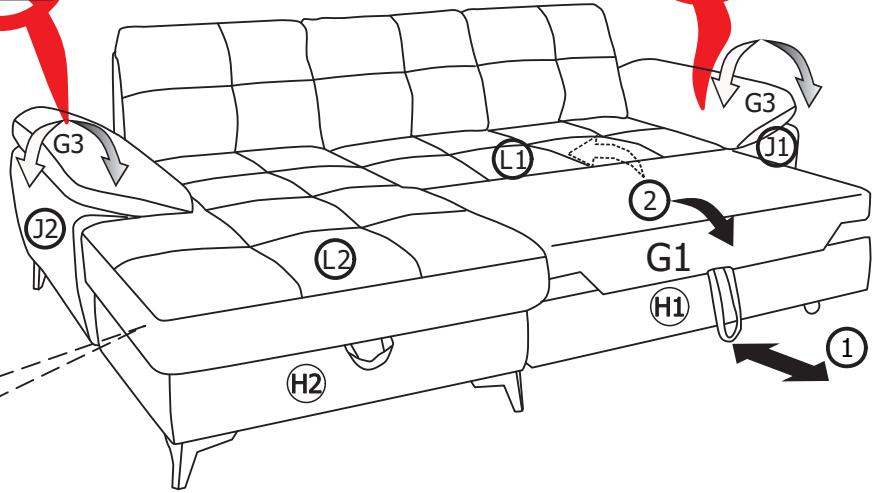
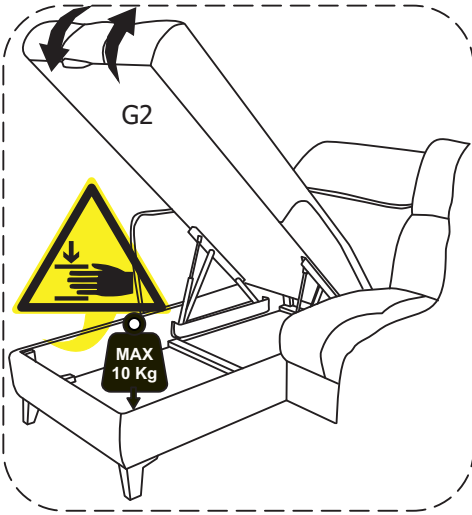


3/4

Name-Naam-Nazwa-Isim-Название-Nume-Nome-Nom-Názov-Název-Nev-Ime-Име

AUCKLAND 2F.RECBK/RECBK.2F

	x5		x2		x20	
						x7

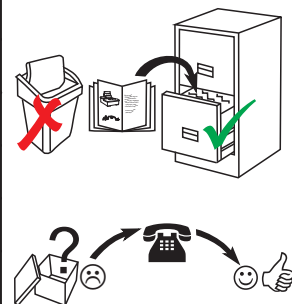


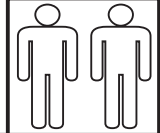
Service-Dienstverlening-Serwis-Servis-Сервисная служба-Assistenza-Szerviz

Typ-Type-Tip-Tipus-Tipo [v2](#)

E1	G2	J1
E2	G3	J2
E2	H1	C1
E3	H2	C2
E4	L1	
E5	L2	
G1	L3	

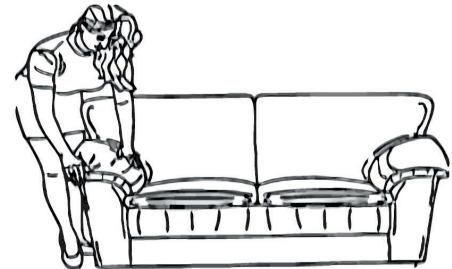
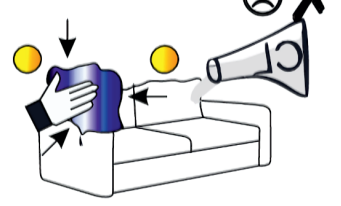
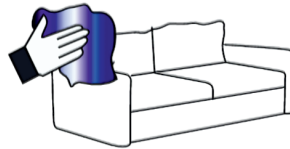
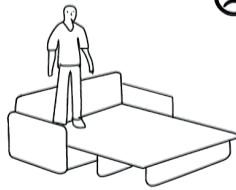
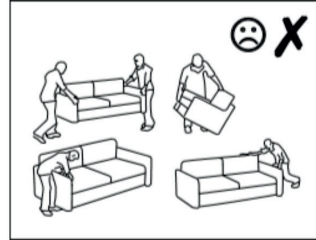
Serien-/Chargen-Nr.-





Name-Naam-Nazwa-Isim-Название-Nume-Nome-Nom-Názov-Název-Nev-Ime-Име

AUCKLAND 2F.RECBVK/RECBVK.2F



Service-Dienstverlening-Serwis-Servis-Сервисная служба-Serviciu-Servizio-Služby-Szerviz-Storitev-Обслужване

Typ-Typе-Tip-Tip-Tastati-Tipo-Tipus

C1	G2	J1
C2	G3	J2
E1	H1	C1
E2	H2	C2
E3	L 1	
E4	L2	
E5	L3	

Serien-/Chargen-Nr.-

