

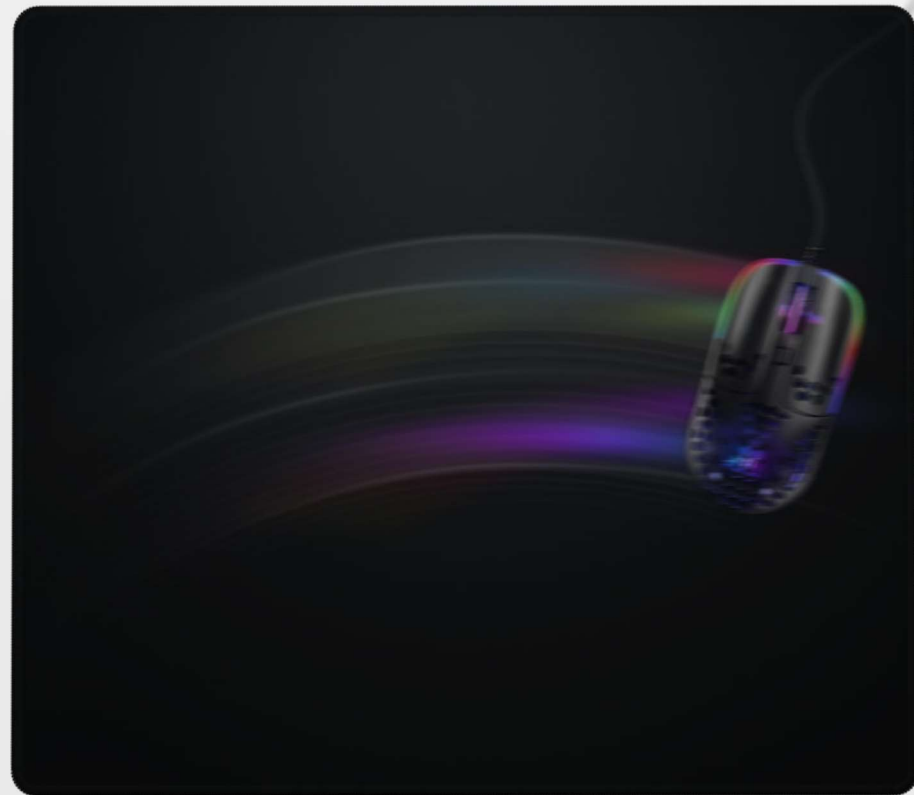
xtrfy

**XTRFY GPZ1 - ZY'S DAMAGE
GAMING MOUSEPAD**



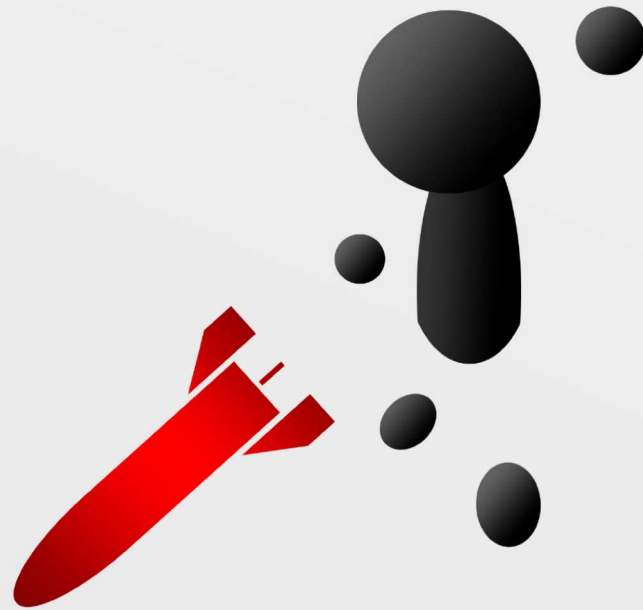
AIM ON POINT.

Control for precise aiming or speed for fast plays? The material for the GPZ1 mousepad is selected by Rocket Jump Ninja to bring you a well-balanced combination of both. All to help you inflict more damage in-game.



MATERIALS SELECTED BY ROCKET JUMP NINJA.

Considered by many to be the world's top mouse reviewer, Zy "Rocket Jump Ninja" Rykoa is one of the most experienced and trusted experts within the field of gaming mice. After more than 150 reviews and over 20 years of experience in first-person shooter games, Rocket Jump Ninja has become a go-to source for both casual gamers and pro players looking for advice on how to improve their aim.



CONTROL MOUSEPAD WITH ACCELERATED FEEL.

With the right mouse at hand, you need a mousepad with the right characteristics to unlock your full potential. The fabric used for the GPZ1's surface is carefully selected, based on the same perspective as in Rocket Jump Ninja's mouse reviews: what's best for your aim? After months of testing, this proved to be the best-performing surface.





“There are so many mouse pads out now that it’s never been harder to choose which is right for you. I’ve reviewed a lot, found some great ones, but I spent months testing new materials because I wanted to find something special. After some time, I found a surface that stood out from the rest. I wasn’t even thinking about the material, but I noticed my damage was a lot higher in each game using that pad. It has this really interesting blend of control and speed, where if you move slowly, it acts as a control pad, but if you move quickly, it acts as a speed pad. It’s like a material version of mouse acceleration but with consistent crosshair movement speed. Definitely my favourite so far!”

Zy “Rocket Jump Ninja” Rykoa

ZY'S DAMAGE.

The name of the mousepad comes from the increase in damage that Rocket Jump Ninja saw in Quake while using it. Combine it with the MZ1 – Zy's Rail mouse for some proper Rail Damage!



DURABLE DESIGN.

High-quality fabric. Rubber base. Stitched edges. The GPZ1 is designed to last. It's even machine washable.

(30 °C, dry flat, no tumbling or ironing — and it'll be as good as new.)



WINNING INGREDIENTS:

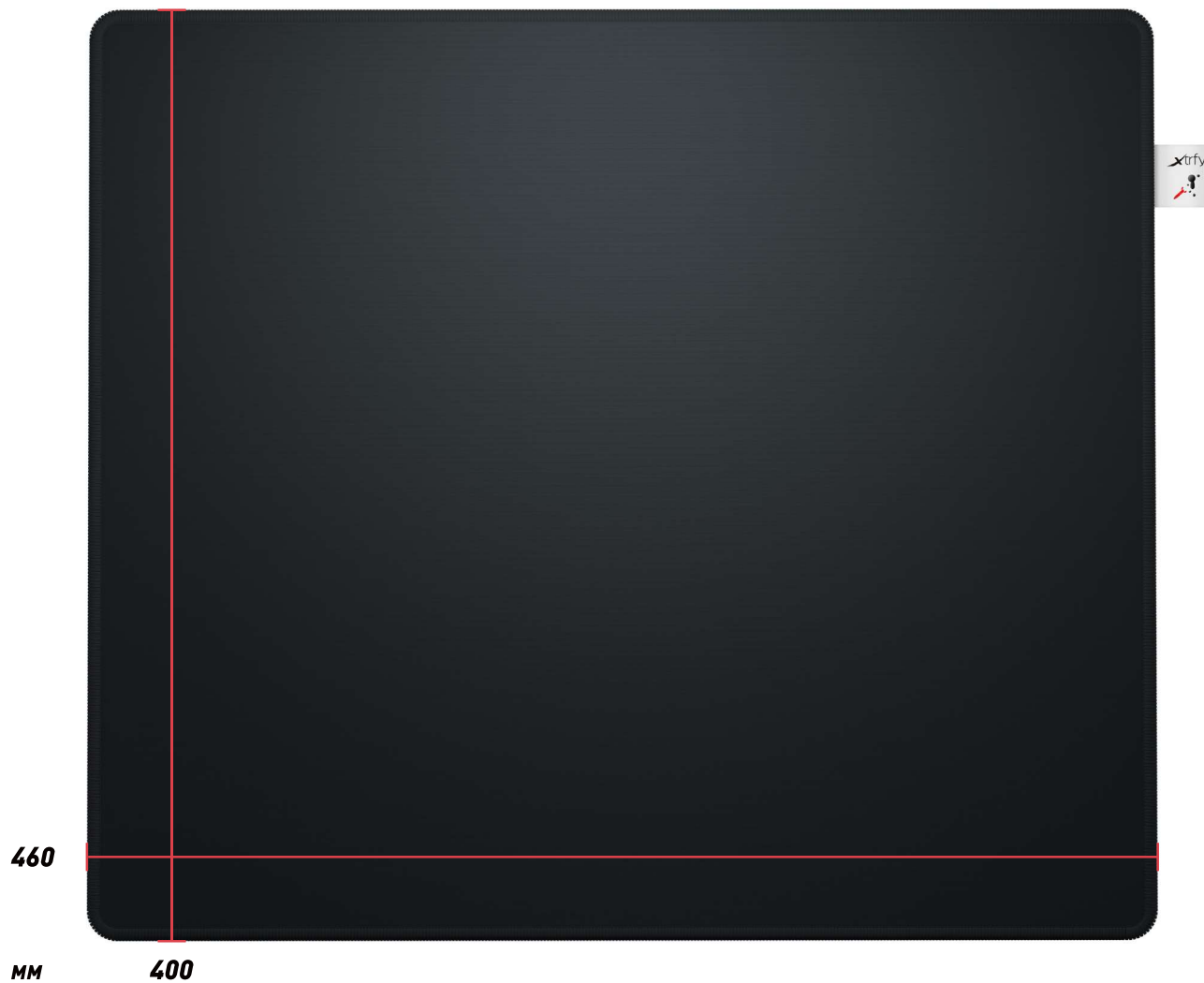
Surface: Cloth

Base: Non-slip rubber

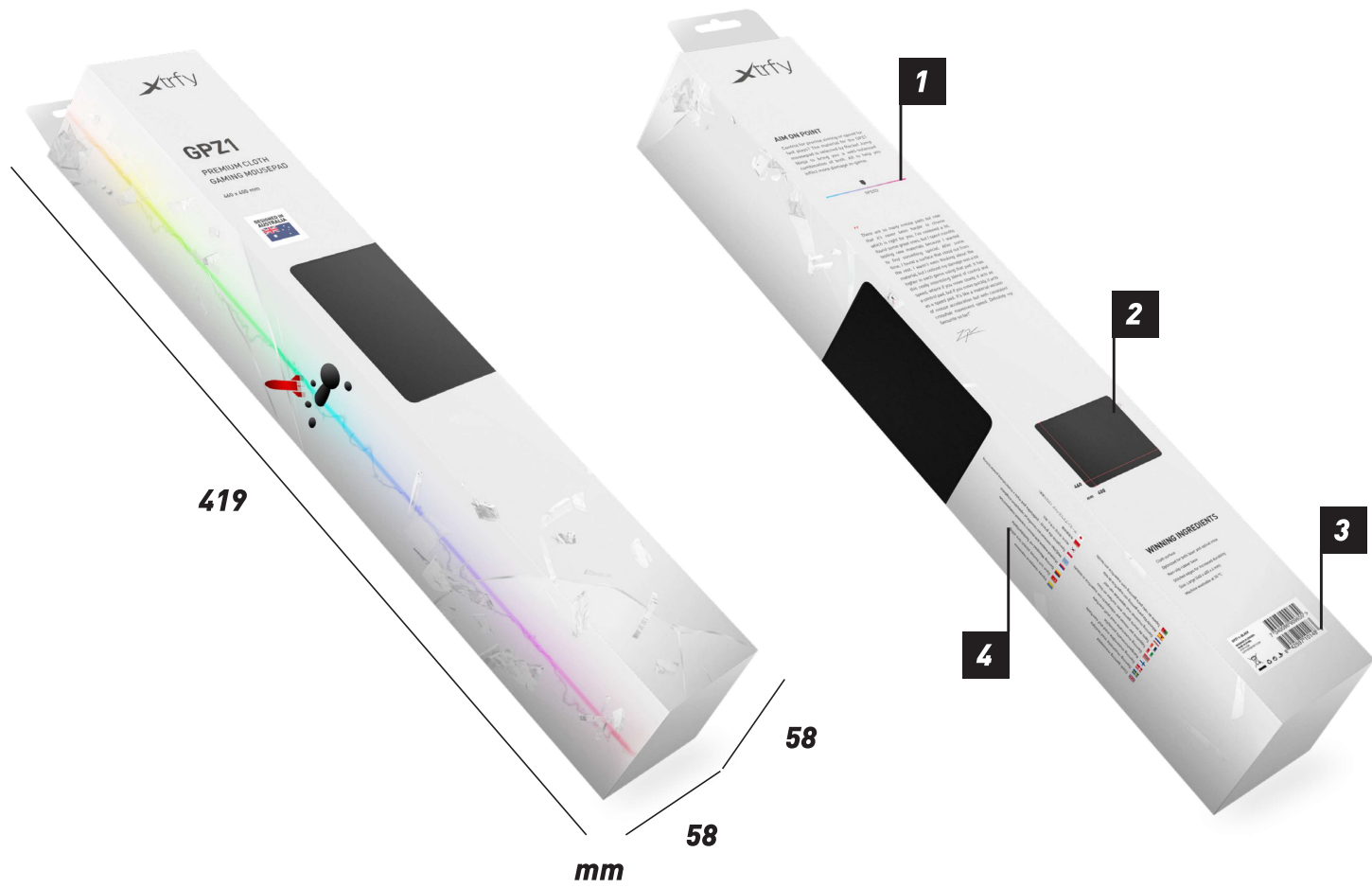
Edges: Stitched for increased durability

Size: Large (460 x 400 x 4 mm)

Other: Machine washable at 30 °C







- 1** Product description and surface speed meter
- 2** Product preview
- 3** EAN/UPC barcodes and certification marks
- 4** Product translations



390 mm

455 mm

385 mm

PACKAGING

PCS

WEIGHT

DIMENSIONS (W/H/D)

SINGLE

1

481 g

410 x 58 x 58 mm

INNERBOX

6

3.13 KG

192 x 130 x 425 mm

MASTERBOX

36

19.3 kg

390 x 385 x 455 mm

PRODUCT

GPZ1

ART. NO

GPZ1-L-BLACK

EAN

7340086909655

UPC

842597101483

PRODUCT TEXT

XTRFY GPZ1 – ZY’S DAMAGE
GAMING MOUSEPAD

BULLET POINTS

- **In collaboration with Rocket Jump Ninja.**
Materials selected by one of the world’s top gaming mouse experts.
- **Cloth surface.**
Control surface with accelerated feel.
- **Durable design.**
Hard-wearing materials and stitched edges.

SHORT PRODUCT DESCRIPTION (< 30 WORDS)

Control for precise aiming or speed for fast plays? The material for the GPZ1 mousepad is selected by Rocket Jump Ninja to bring you a well-balanced combination of both.

FULL PRODUCT DESCRIPTION

AIM ON POINT.

Control for precise aiming or speed for fast plays? The material for the GPZ1 mousepad is selected by Rocket Jump Ninja to bring you a well-balanced combination of both. All to help you inflict more damage in-game.

MATERIALS SELECTED BY ROCKET JUMP NINJA.

Considered by many to be the world’s top mouse reviewer, Zy “Rocket Jump Ninja” Rykoa is one of the most experienced and trusted experts within the field of gaming mice. After more than 150 reviews and over 20 years of experience in first-person shooter games, Rocket Jump Ninja has become a go-to source for both casual gamers and pro players looking for advice on how to improve their aim.

CONTROL MOUSEPAD WITH ACCELERATED FEEL.

With the right mouse at hand, you need a mousepad with the right characteristics to unlock your full potential. The fabric used for the GPZ1’s surface is carefully selected, based on the same perspective as in Rocket Jump Ninja’s mouse reviews–: what’s best for your aim? After months of testing, this proved to be the best-performing surface.

“There are so many mouse pads out now that it’s never been harder to choose which is right for you. I’ve reviewed a lot, found some great ones, but I spent months testing new materials because I wanted to find something special. After some time, I found a surface that stood out from the rest. I wasn’t even thinking about the material, but I noticed my damage was a lot higher in each game using that pad. It has this really interesting blend of control and speed, where if you move slowly, it acts as a control pad, but if you move quickly, it acts as a speed pad. It’s like a material version of mouse acceleration but with consistent cross-

hair movement speed. Definitely my favourite so far!”

ZY’S DAMAGE.

The name of the mousepad comes from the increase in damage that Rocket Jump Ninja saw in Quake while using it. Combine it with the MZ1 – Zy’s Rail mouse for some proper Rail Damage!

DURABLE DESIGN.

High-quality fabric, Rubber base, Stitched edges. The GPZ1 is designed to last. It’s even machine washable. (30 °C, dry flat, no tumbling or ironing → and it’ll be as good as new.)

WINNING INGREDIENTS:

Surface: Cloth

Base: Non-slip rubber

Edges: Stitched for increased durability

Size: Large (460 x 400 x 4 mm)

Other: Machine washable at 30 °C

QUESTIONS?

GET IN TOUCH WITH JOAKIM JANSSON AT JOAKIM.JANSSON@XTRFY.COM
OR JOHAN WÄLTARE: JOHAN.WALTARE@XTRFY.COM