

M 5

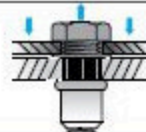
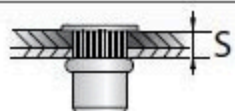
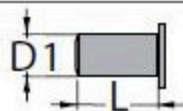
SW = 7,0 mm

SW1 = 7,1 mm

SE = 7,9 mm

D2 = 8,0 mm

k = 0,8 mm



7,0 x 14,0 mm

0,5 - 3,0 mm

75505 02101

7,0 x 16,5 mm

3,0 - 5,0 mm

75505 02102

10000 N

6,0 Nm