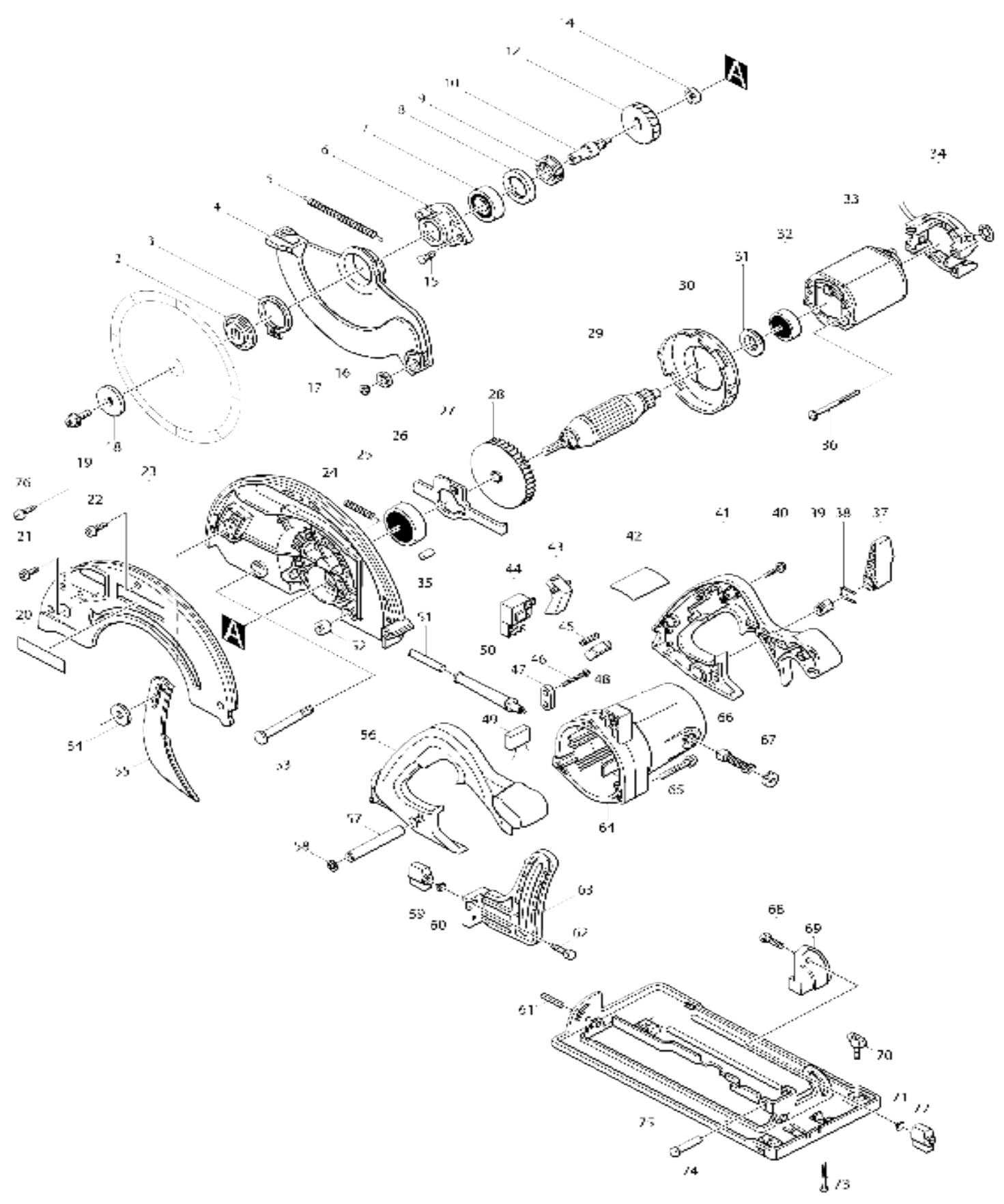


Model No.5603R CIRCULAR SAW 165MM



Model No.5603R CIRCULAR SAW 165MM

Item No.	Parts No.	Description	Interchangeability	Q'ty	New/Old	Note1	Note2
002	224311-1	INNER FLANGE 40		1	*		
002-1	224340-4	INNER FLANGE 40	X	1			
003	961156-3	RETAINING RING S-40		1			
004	316598-0	SAFETY COVER		1	*		
004-1	316598-0	SAFETY COVER	O	1			
005	231797-2	TENSION SPRING 4		1	*		
005-1	231844-9	TENSION SPRING 4	<	1			
006	316683-9	BEARING BOX		1	*		
006-1	316884-9	BEARING BOX	X	1	*		
006-2	317469-4	BEARING BOX	S	1			
007	211129-9	BALL BEARING 6201DDW		1	*		
007-1	211227-9	BALL BEARING 6002DDW	X	1	*		
007-2	211236-8	BALL BEARING 6002DDW	O	1			
008	267126-3	FLAT WASHER 22		1			
009	285831-0	BEARING RETAINER 19-34		1			
010	322675-8	SPINDLE		1	*		
010-1	322922-7	SPINDLE	X	1			
011	254011-9	WOODRUFF KEY 4		1	*		
012	226425-2	HELICAL GEAR 41		1	*		
012-1	226474-9	HELICAL GEAR 41	X	1			
013	267118-2	FLAT WASHER 6		1	*		
014	211019-6	BALL BEARING 626		1	*		
014-1	211034-0	BALL BEARING 608	X	1			
015	265034-2	+ COUNTERSUNK HEAD SCREW M5X16		2	*		
015-1	265D49-3	+COUNTERSUNK HEAD SCREW M5X16	O	2			
016	415438-0	ROLLER 20		2			
017	415437-2	ROLLER PIN 6		2			
018	224306-4	OUTER FLANGE 40		1	*		
018-1	224338-1	OUTER FLANGE 40	X	1			
019	266024-8	HEX. SOCKET HEAD BOLT M6X20		1	*		
019-1	266139-1	HEX. SOCKET HEAD BOLT M6X16	X	1			
020	819064-1	MAKITA MARK		1			
021	922312-0	HEX. SOCKET HEAD BOLT M6X12		1			
022	266042-6	TAPPING SCREW BIND CT 4X20		3			
023	316687-1	BLADE CASE COVER		1	*		
023-1	316687-1	BLADE CASE COVER	O	1			
024	152477-6	BLADE CASE COMPLETE		1	*		
D10		INC. 35					
024-1	152547-1	BLADE CASE COMPLETE	X	1	*		
D10		INC. 35					
024-2	152547-1	BLADE CASE COMPLETE	O	1			
D10		INC. 35					
025	233092-6	COMPRESSION SPRING 5		1			
026	211129-9	BALL BEARING 6201DDW		1			
027	344114-8	SHAFT LOCK		1			
028	241876-8	FAN 76		1			

029C_	516223-5	ARMATURE ASS'Y 220V		1			
D10		INC. 26,28,31,32					
030	415503-5	BAFFLE PLATE		1			
031	681625-5	INSULATION WASHER		1			
032	211031-6	BALL BEARING 608LLB		1	*		
032-1	210005-4	BALL BEARING 608DDW	X	1			
033C_	634233-1	FIELD 220V		1			
034	632503-2	SUPPORT COMPLETE		1	*		
034-1	135793-1	SUPPORT ASS'Y	X	1			
C10	654020-2	RING TERMINAL		2			
C20	654501-6	CONNECTOR P-1.25		2			
035	263005-3	RUBBER PIN 6		1			
036A_	266110-5	TAPPING SCREW FLANGE PF5X60		2	*		
036A1	266044-2	TAPPING SCREW 5X60	O	2			
037	272230-5	LEVER 54		1			
038	231955-0	RING SPRING 12		1			
039	252134-7	HEX. NUT M8		1			
040A_	266111-3	TAPPING SCREW FLANGE PF 5X2 5		5	*		
040A1	266041-8	TAPPING SCREW 5X25	O	5			
041	182675-8	HANDLE SET		1			
D10		INC. 56					
042A_	858231-3	NAME PLATE 5603R		1			
043	415439-8	SWITCH LEVER		1			
044	651922-3	SWITCH TG71B		1			
045	231230-4	COMPRESSION SPRING 4		1			
046A_	266121-0	TAPPING SCREW FLANGE PF 4X1 8		2	*		
046A1	265995-6	TAPPING SCREW 4X18	O	2			
047B_	687063-9	CORD CLAMP		1	*		
047B1	687052-4	STRAIN RELIEF	X	1			
048	415440-3	LOCK-OFF BUTTON		1			
049B_	645118-6	NOISE SUPPRESSOR		1	*		
049B1	645142-9	NOISE SUPPRESSOR	O	1			
050A_	682540-6	CORD GUARD 9.3-90		1			
051M _	665865-3	POWER SUPPLY CORD 1.0-2-2.5		1			
052	262511-5	RUBBER SLEEVE 6		1			
053	266019-1	CAP SQUARE NECK BOLT M8X98		1			
054	253783-3	FLAT WASHER 6		1			
055	165093-5	RIVING KNIFE		1			
056	182675-8	HANDLE SET		1			
D10		INC. 41					
057	331432-3	PIPE 9		1			
058	941201-0	FLAT WASHER 8		1			
059	252624-0	WING NUT M6		1			
060	941151-9	FLAT WASHER 6		1			
061	951204-6	SPRING PIN 6-16		1			
062	921332-1	HEX. BOLT M6X20		1			
063	316597-2	DEPTH GUIDE		1			
064	159714-9	MOTOR HOUSING COMPLETE		1			
C10	643754-2	BRUSH HOLDER		2	*		

C11	643708-9	BRUSH HOLDER 5-11	O	2			
065	911278-9	PAN HEAD SCREW M5X55		3			
066	191963-2	CARBON BRUSH CB-303		1	*		
066-1	194996-6	CARBON BRUSH SET CB-303	O	1			
067	643750-0	BRUSH HOLDER CAP 7-11		2			
068	921332-1	HEX. BOLT M6X20		1			
069	415443-7	ANGULAR PLATE GUIDE		1			
070	251887-5	SCREW M6X10		1	*		
070-1	265725-5	WING BOLT M6X10	O	1			
071	941151-9	FLAT WASHER 6		1			
072	252624-0	WING NUT M6		1			
073A_	266121-0	TAPPING SCREW FLANGE PF 4X18		2	*		
073A1	265995-6	TAPPING SCREW 4X18	O	2			
074	256690-9	PIN 10		1			
075	163358-9	BASE		1	*		
075-1	163358-9	BASE	O	1			
076	266026-4	TAPPING SCREW BIND CT 4X12		2			
077	213560-5	O RING 44		1			
A01	165108-8	GUIDE RULE		1			
A02	783203-8	HEX. WRENCH 5		1			
A03	B-02917	T.C.T.SAW BLADE 165MM		1			
E03	192420-3	JOINT		1			
C10	266026-4	TAPPING SCREW BIND CT 4X12		2			
F01	199140-0	GUIDE RAIL 1000 SET		1			
F03	192505-5	GUIDE RAIL ADAPTER		1			
F04	192516-0	GUIDE RAIL		0			
F05	199141-8	GUIDE RAIL 1500 SET		1			
F06	194368-5	GUIDE RAIL 1400 SET		1			
F07	194925-9	GUIDE RAIL 1900 SET		1			
F08	194367-7	GUIDE RAIL 3000 SET		1			
F09	194416-0	SHEET 10000 SET		1			
F10	194417-8	RUBBER SHEET 10000 SET		1			
F11	194418-6	POSITION SHEET 1400 SET		1			
F12	194910-2	POSITION SHEET 1900 SET		1			
E04	824606-8	PLASTIC CARRYING CASE		1	*		
C10	183336-3	LATCH SET		1	*		
E04-1	824964-2	PLASTIC CARRYING CASE	S	1			
C10	162271-8	LATCH		2			
C20	450990-1	HANDLE		1			
E05	837704-9	INNER TRAY	S	1			

Please state Parts No. when your order.

Print Date 20/06/2024