

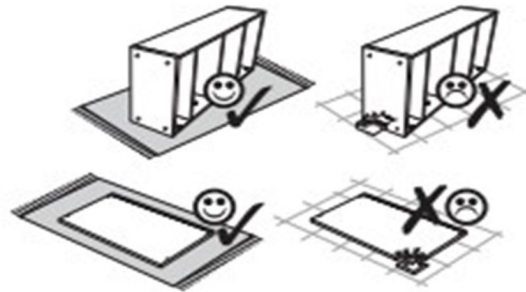
R 11819802, 25553137, 39969427, 57840069,
59901648, 60263435, 66257324, 71245009,
72467643, 87716659, 89558904, 97656654

L 15588764, 27958536, 28830933, 57415910,
69467319, 74696534, 79286928, 88012056,
88023458, 90844431, 91999460, 96003815

Ar.Nr.

IKANO

Universal Montierbar



(D) Montageanleitung

(FR) Notice de montage

(NL) Handleiding voor de montage

(CZ) Montážní návod

(HU) Szerelési útmutató

(TR) Montaj talimatı

(GB) Assembly instructions

(IT) Istruzioni di montaggio

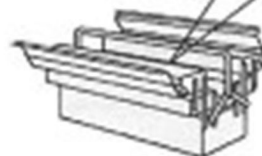
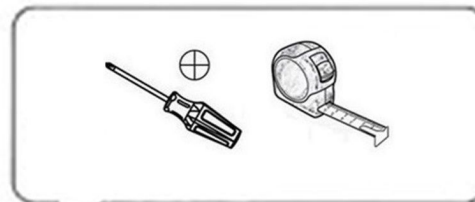
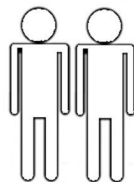
(PL) Instrukcja montażu

(SK) Návod na montáž

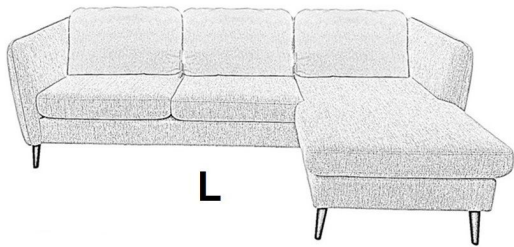
(RO) Instrucțiuni de montaj

(RU) Инструкция по монтажу

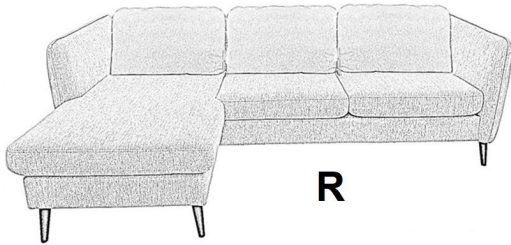
(HR) Shema montaže



LKZ-40834



L



R

Service • Assistenza • Dienstverlening • Serwis
 Servis • Szerviz • Сервисная служба

Name • Nom • Nomo • Naam •
 Nazwa • Imię no • Nazov • Név •
 Denumire • Imin • Имя

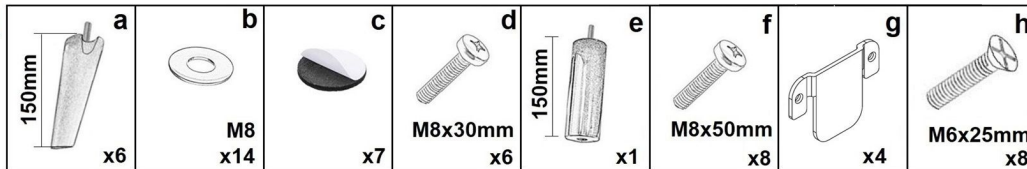
№ • No. • N° • Nomor • C • ID
 201744157731158813231304696194164
 8473033773737399663733900232215887
 7352705

Typ • Type • Tip •
 Tipus • Тип • Тип



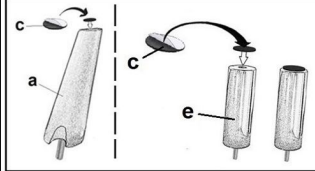
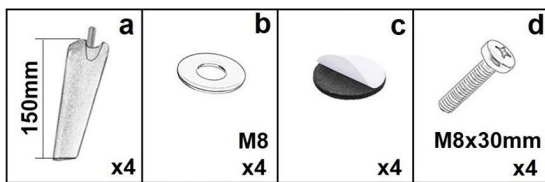
L/R

L/R

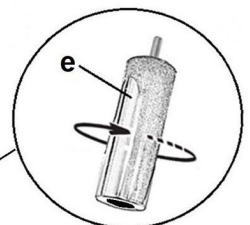
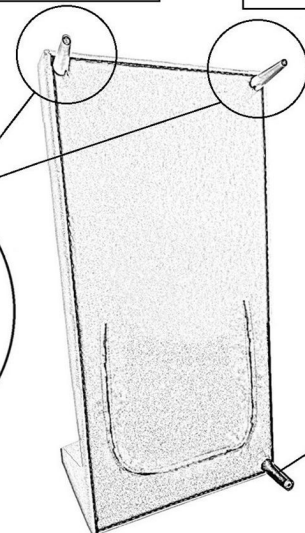
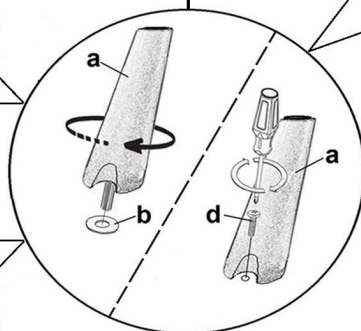
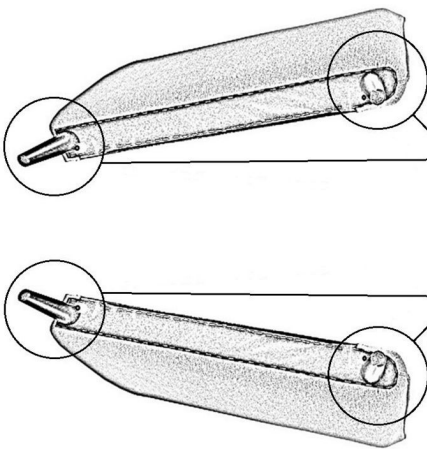
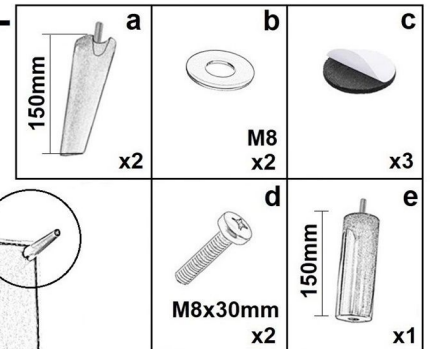


	↙	↘	↗	PCS	☑
1	1380	680	540	x1	1/2
2	1340	800	540	x1	2/2
3	850	540	130	x1	1/2
4	850	540	130	x1	2/2
5	1160	770	130	x1	1/2
6	680	620	130	x2	2/2
7	730	470	130	x3	1/2-x1 2/2-x2

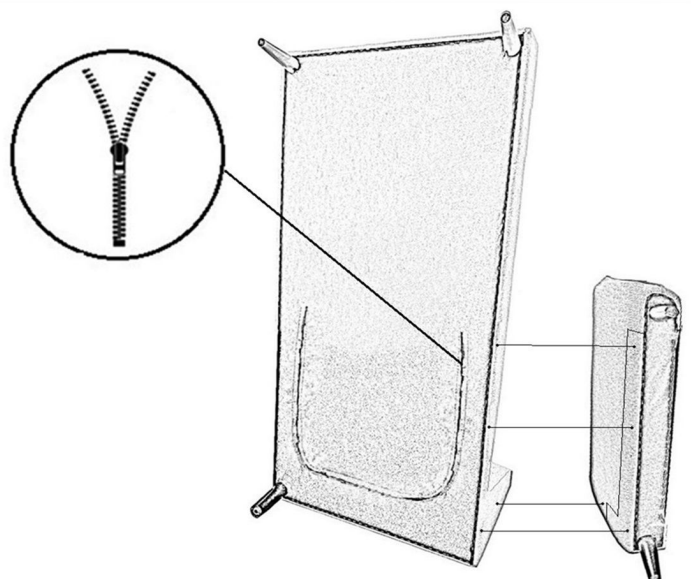
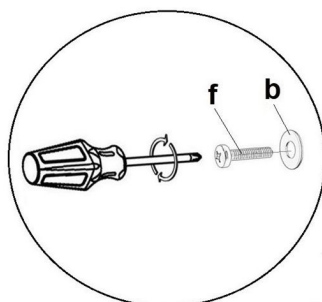
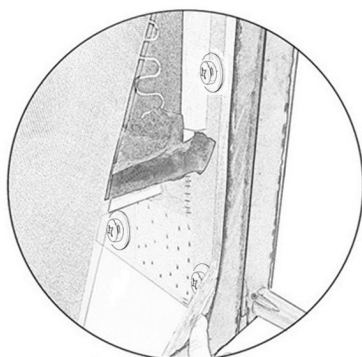
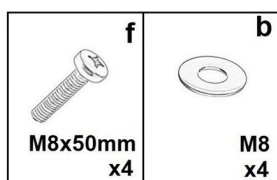
1.L



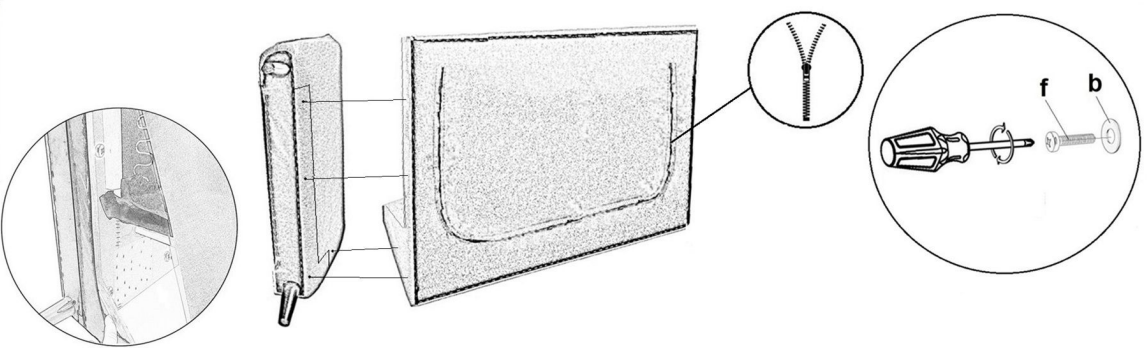
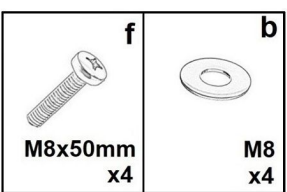
2.L



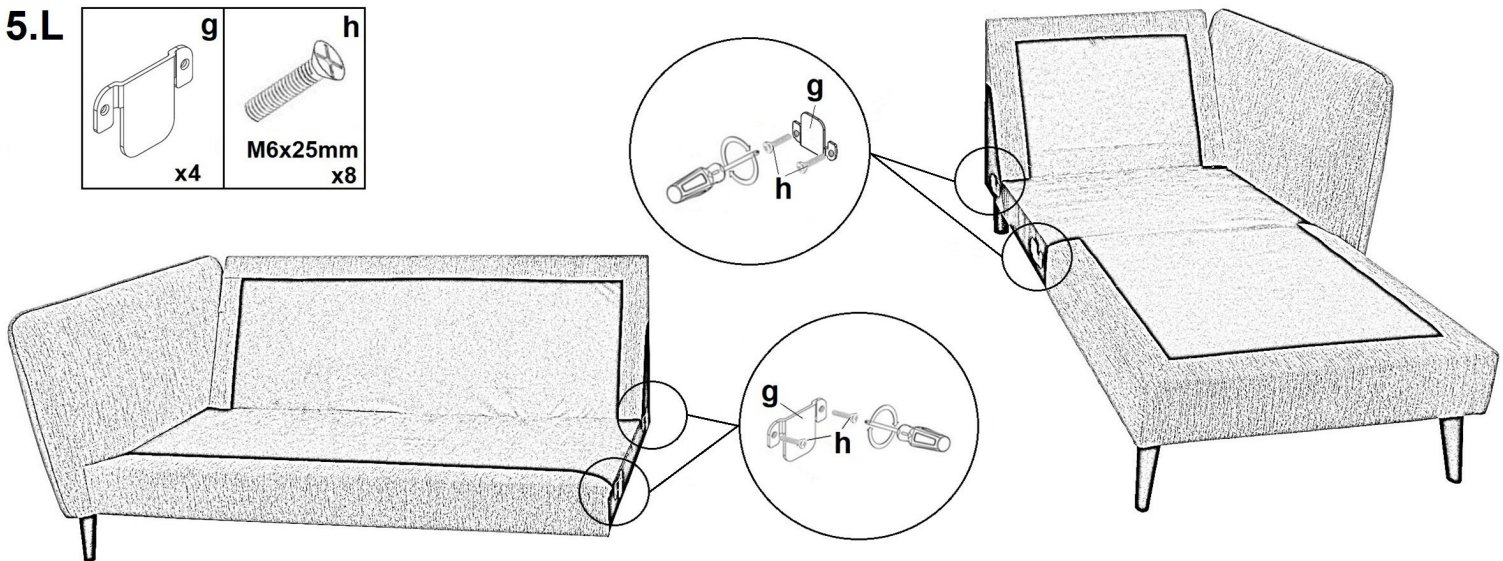
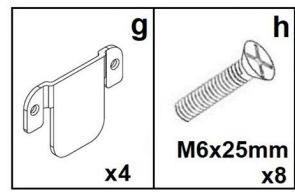
3.L



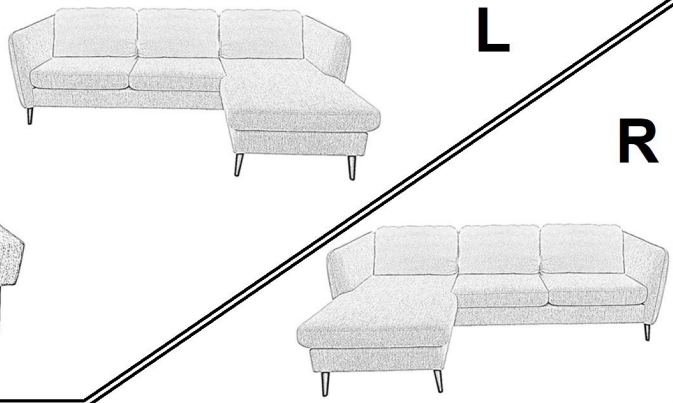
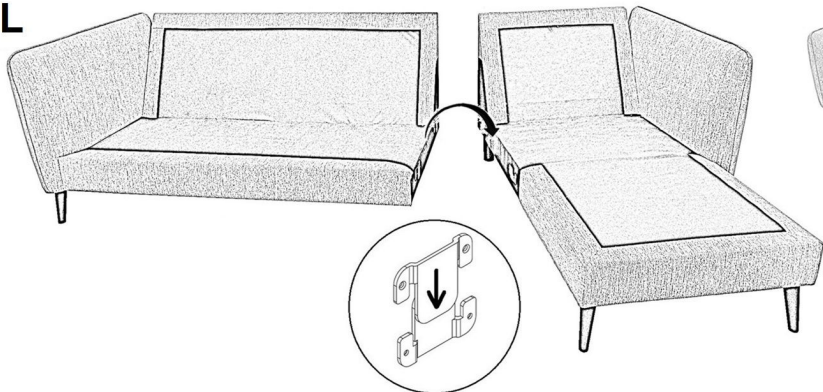
4.L



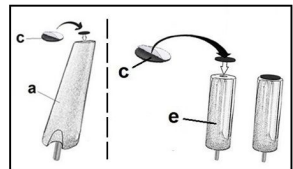
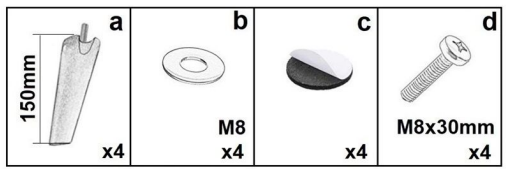
5.L



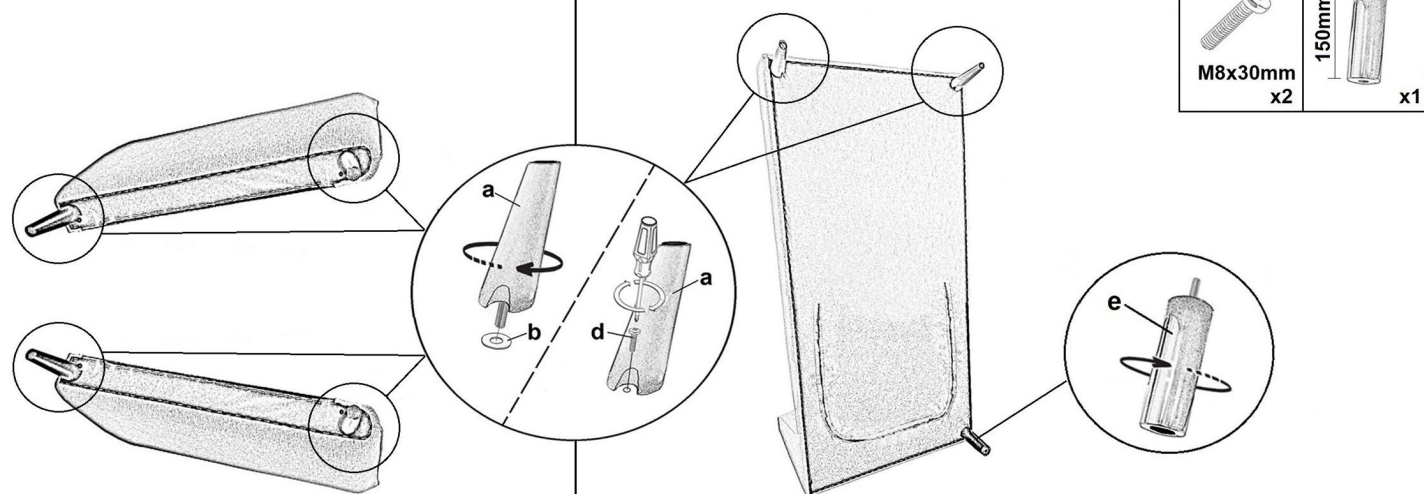
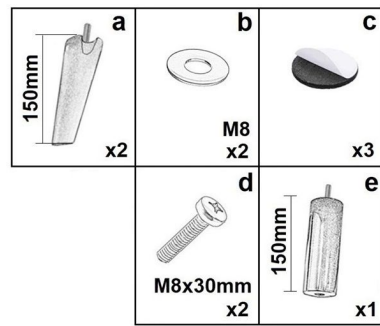
6.L



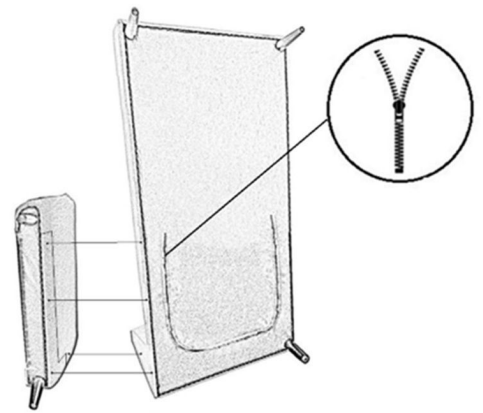
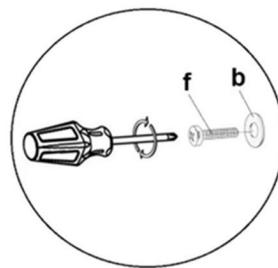
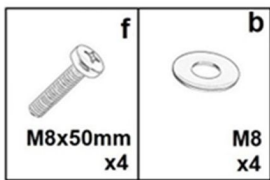
1.R



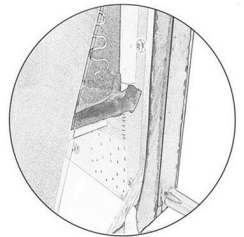
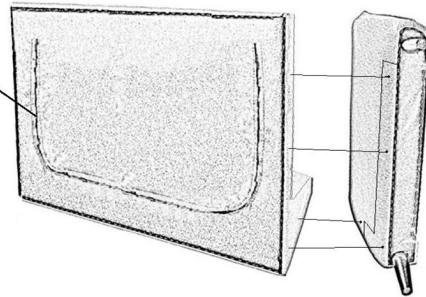
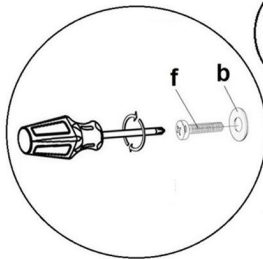
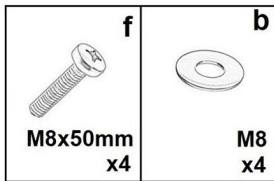
2.R



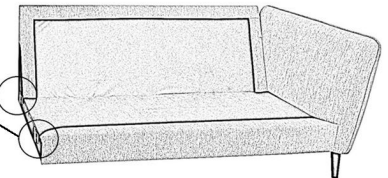
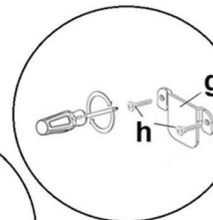
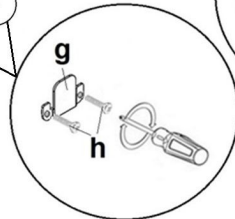
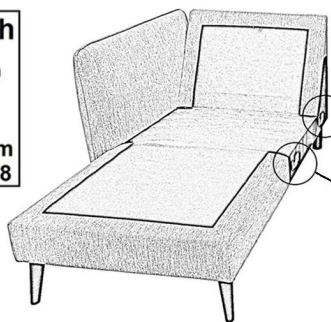
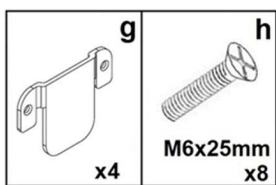
3.R



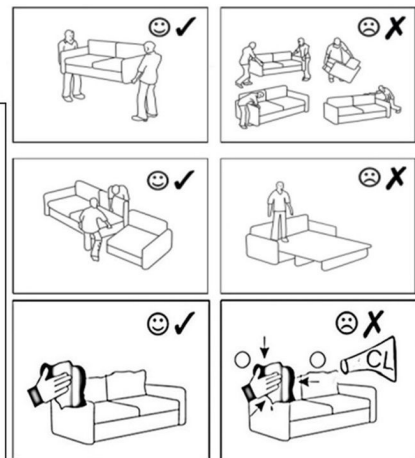
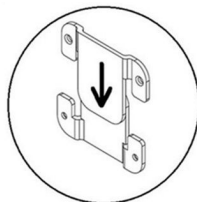
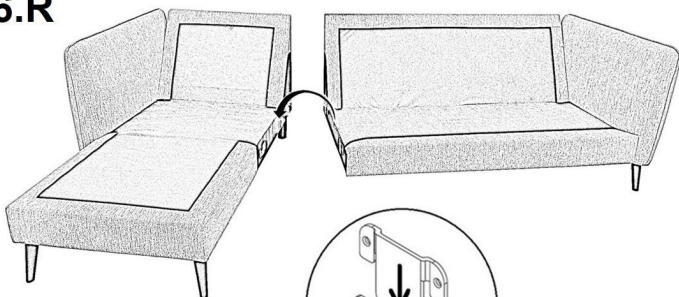
4.R



5.R



6.R



D Allgemeiner Sicherheitshinweis:
Nicht mehr benötigte Verpackungsmaterialien und Kleinteile von Kindern fernhalten

GB General safety instructions:
Package material you do not need any more take far away from children.

F Consigne de sécurité:
Ecarter les matériaux d'emballage et petites pièces inutiles de la portée des enfants.

PL Ogólne zasady bezpieczeñstwa:
Nie potrzebne opakowania i małe części chronić przed dziećmi!

RU Общие указания по безопасности:
Неиспользуемые упаковочные материалы и мелкие детали следует хранить в недоступном для детей месте!

NL Algemene veiligheidsinstructie:
Verpakkingsmaterialen die u niet meer nodig heeft en kleine onderdelen uit de buurt van kinderen houden!

TR Genel güvenlik uyarısı:
Kullanılmayan ambalaj malzemeleri ve küçük parçaları çocuklardan uzak tutun!

RO Indicație generală de siguranță:
Ambalajele care nu mai sunt necesare și piesele de mici dimensiuni nu vor fi lăsate la îndemâna copiilor!

IT Indicazioni generali per la sicurezza:
Tenere lontano da bambini materiali di imballaggio non più necessari e minuteriet!

SK Všeobecné bezpečnostné upozornenie:
Nepotrebný balací materiál a malé diely uchovávať mimo dosahu detí!

CZ Všeobecné bezpečnostní upozornění:
Obalové materiály a malé díly, které už nepotřebujete, udržte mimo dosah dětí!

HU Általános biztonsági tudnivaló:
Ha már nincs szüksége a csomagolóanyagokra és apró darabokra, tegye őket olyan helyre, ahol nem férhetnek hozzá gyermekek!

