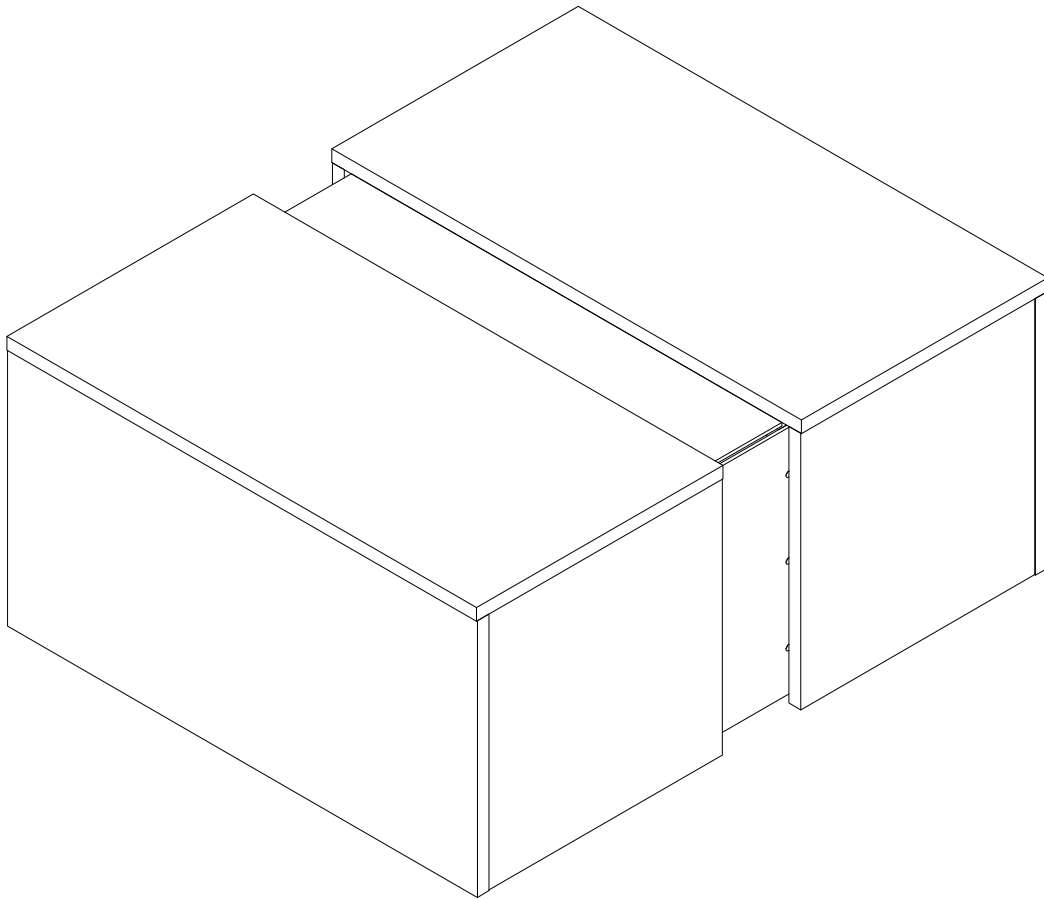
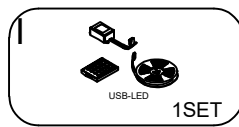
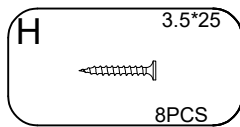
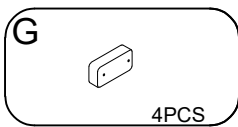
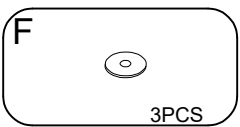
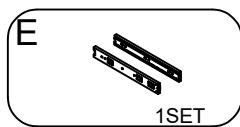
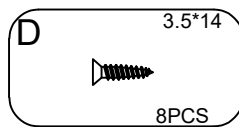
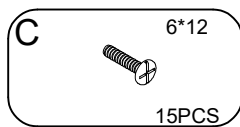
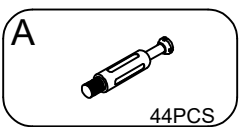
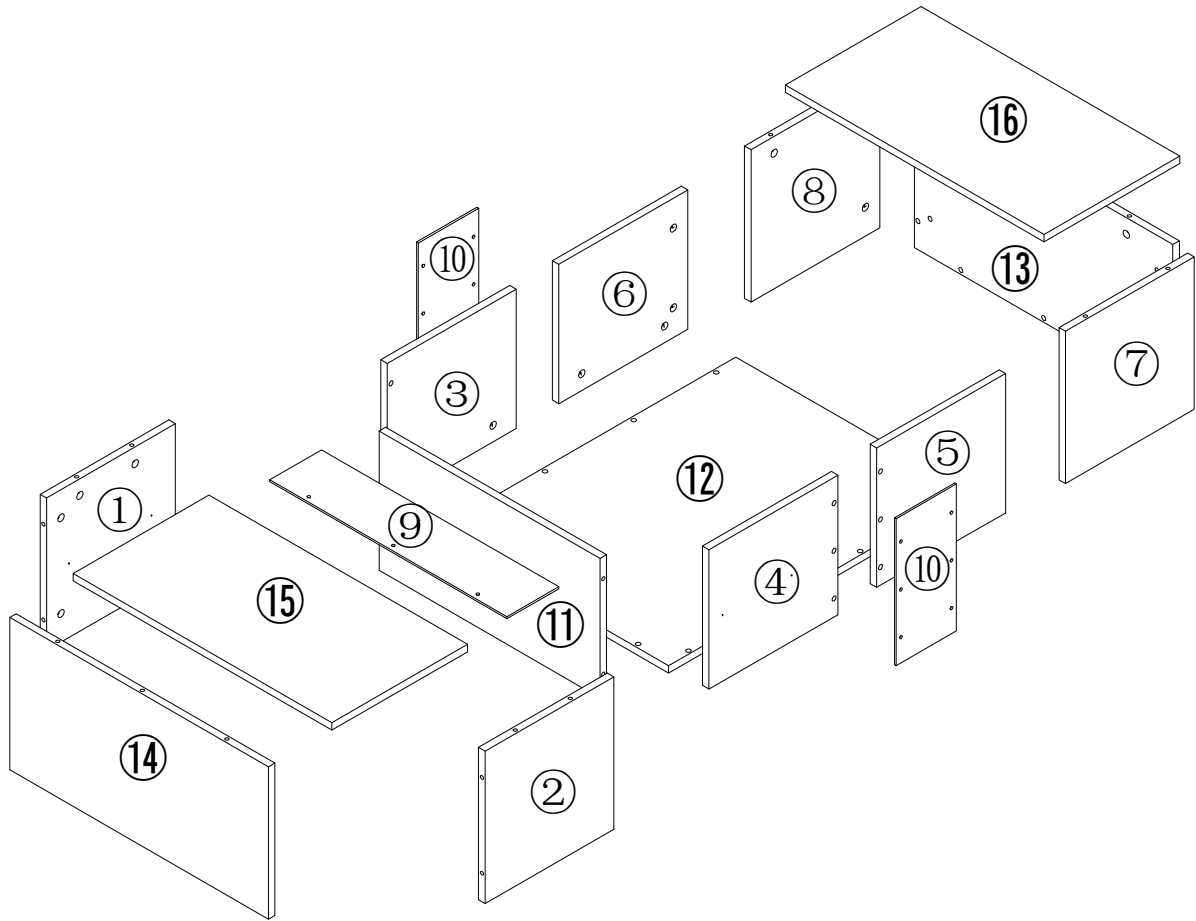


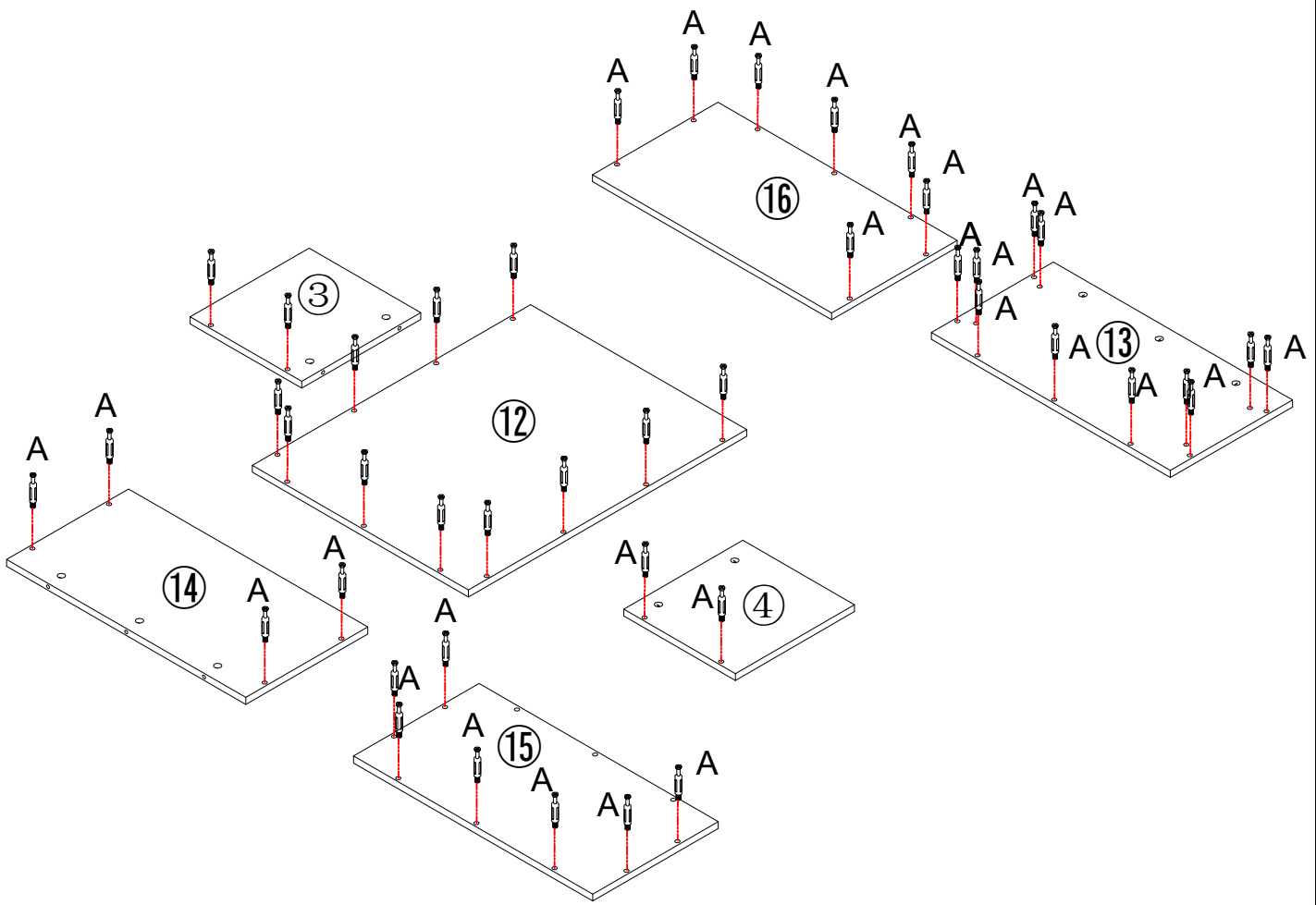
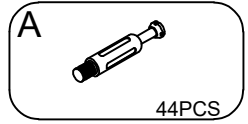
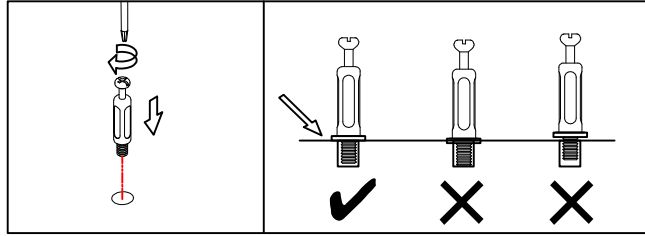
**CE**



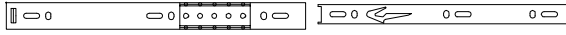
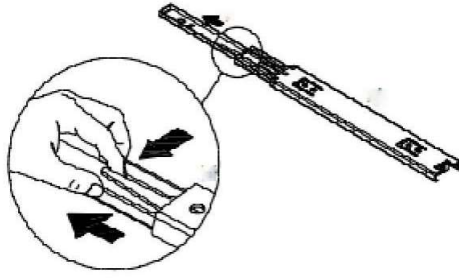
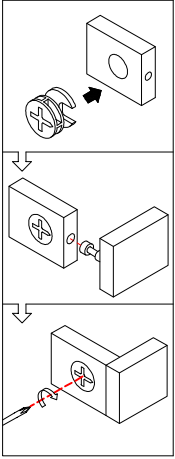
**WF316885BAA**



# STEP 1

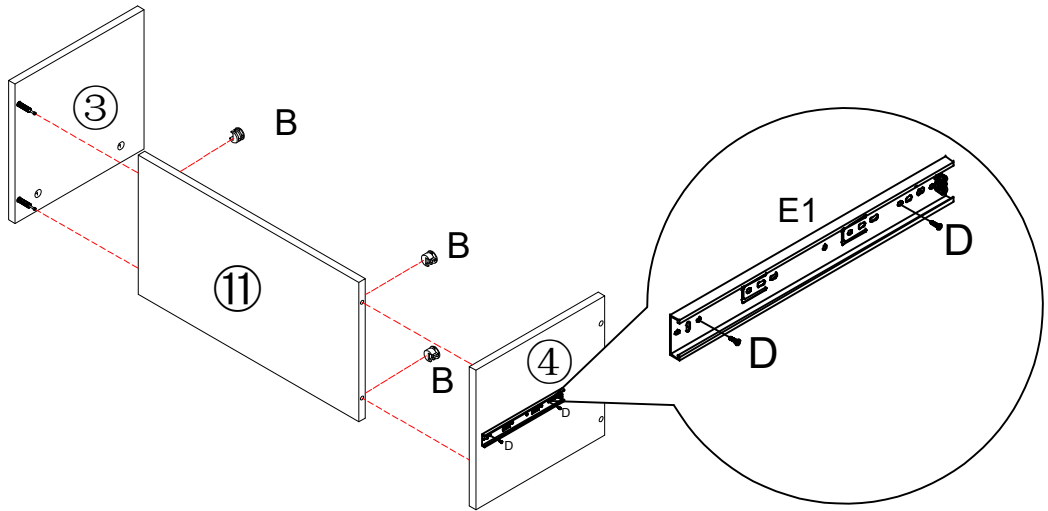
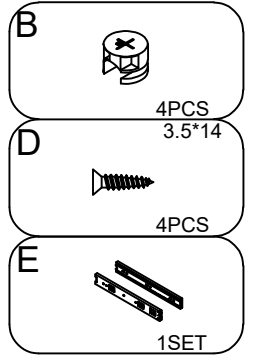


## STEP 2

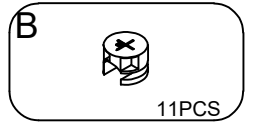
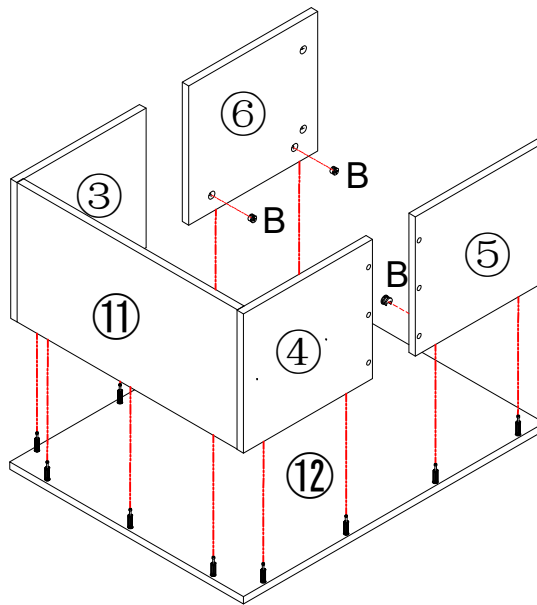
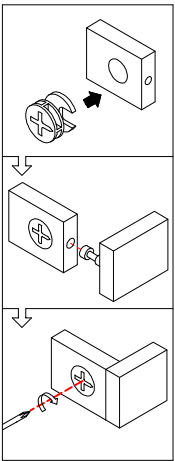


E1

E2



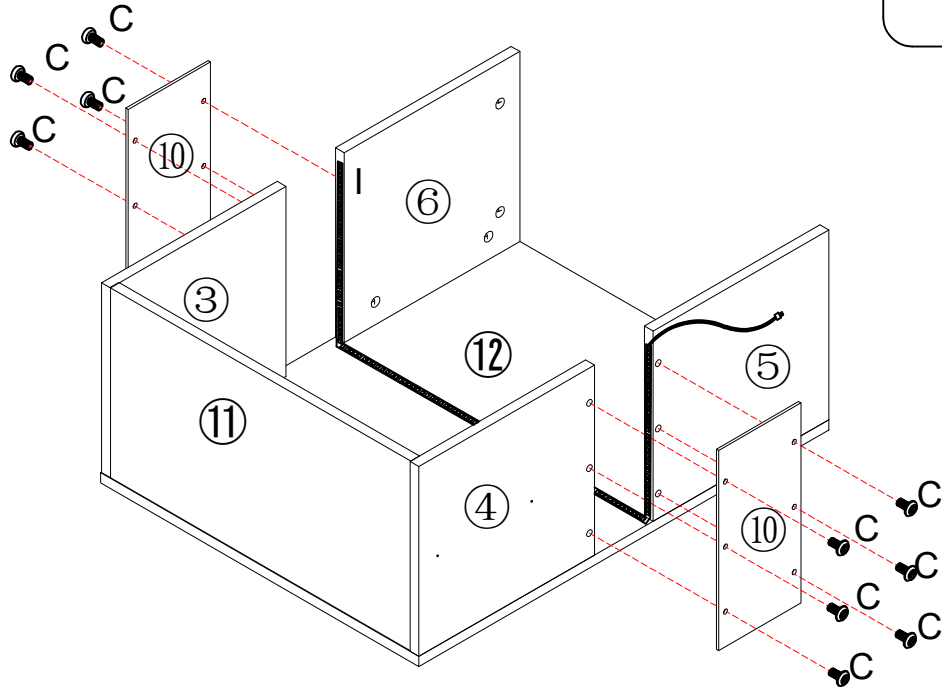
## STEP 3



# STEP 4

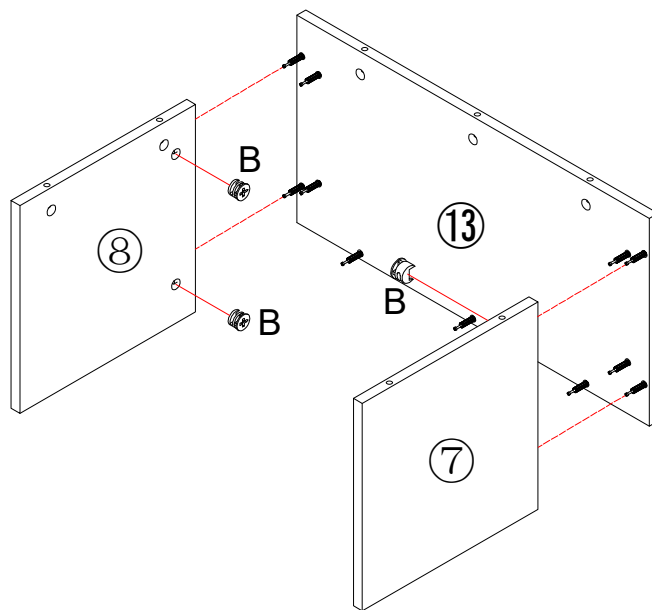
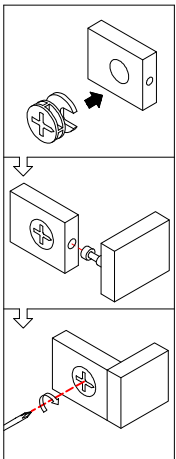
**C** 6\*12  
12PCS

**I**  
USB-LED  
1SET



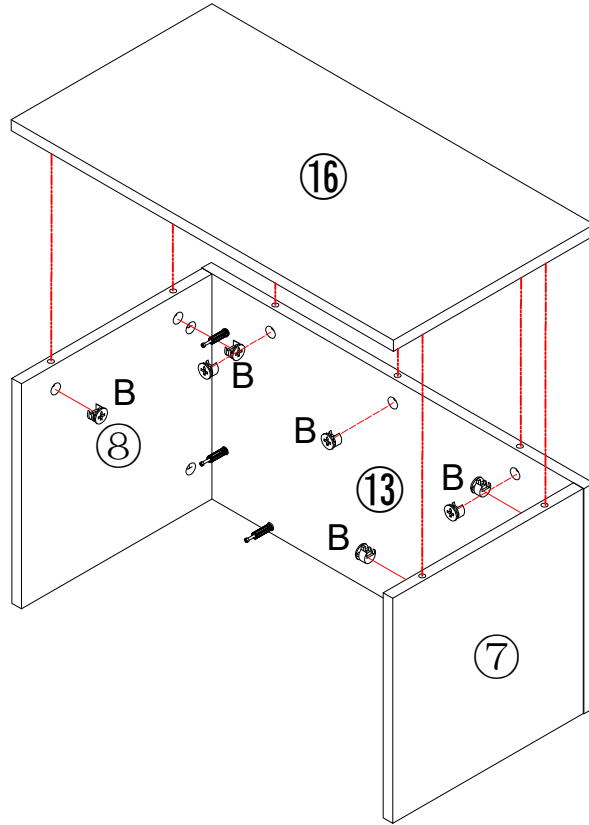
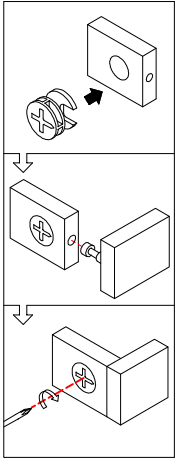
# STEP 5

**B**  
4PCS




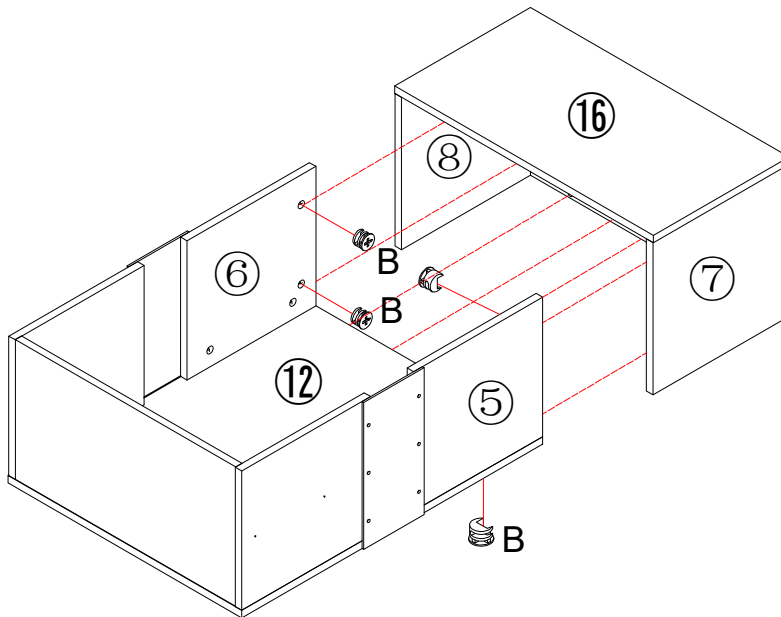
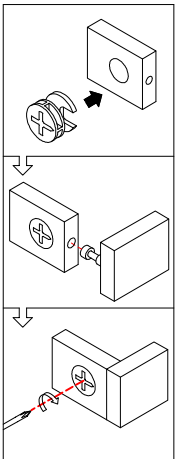
# STEP 6

B  7PCS

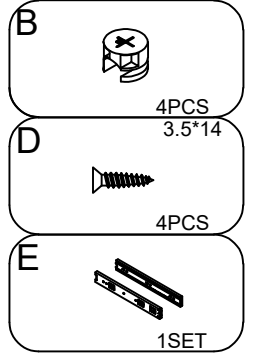
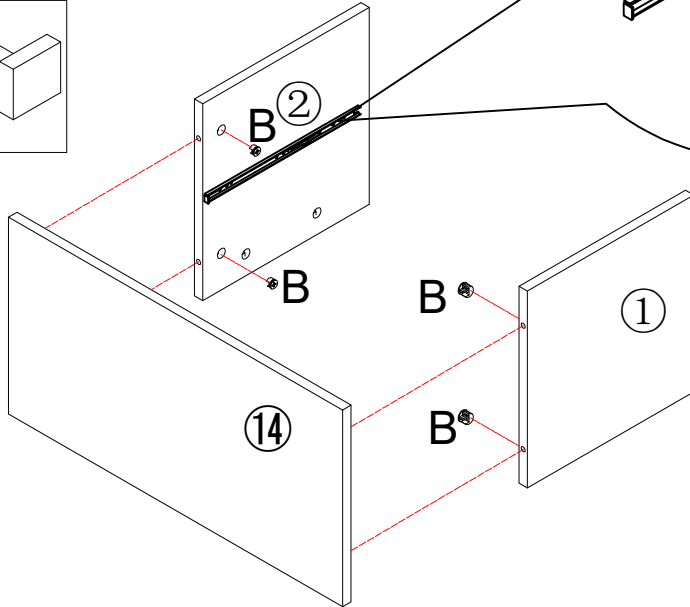
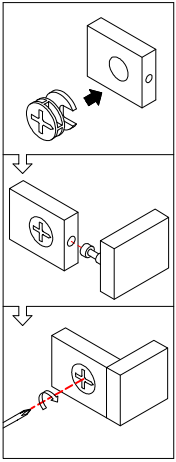


# STEP 7

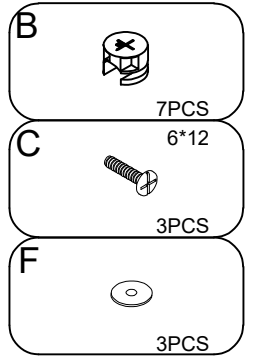
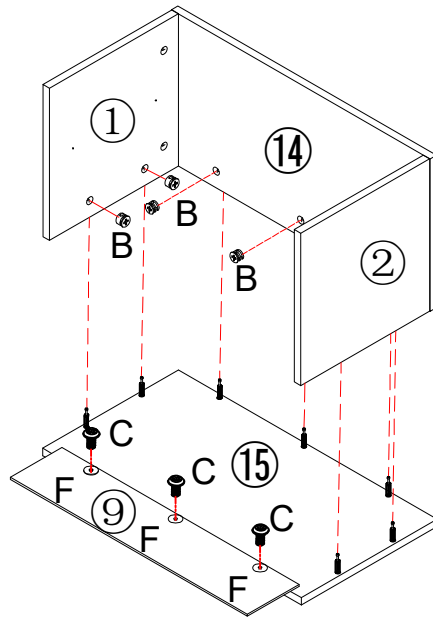
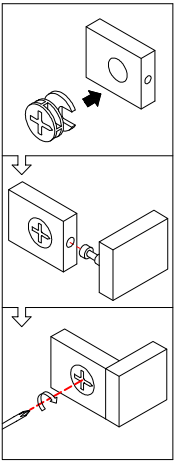
B  7PCS



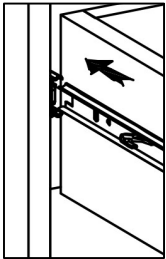
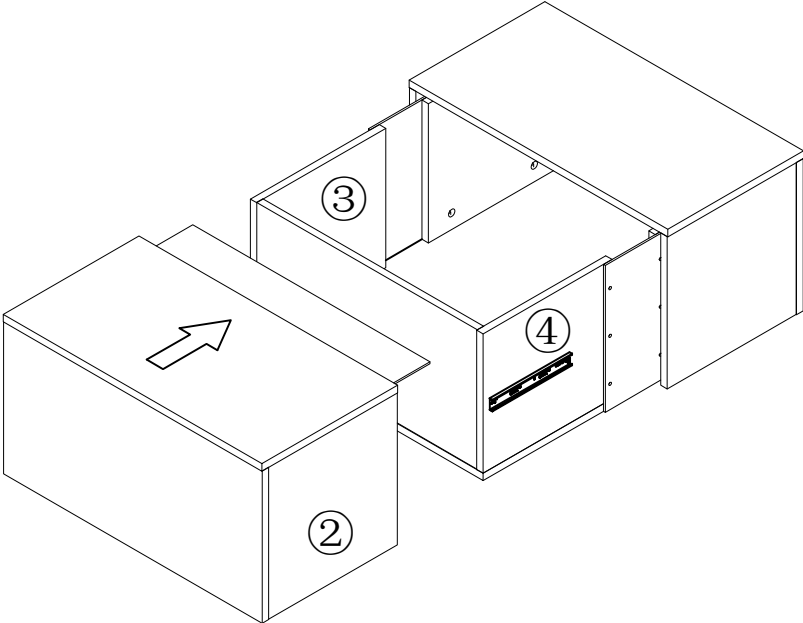
## STEP 8



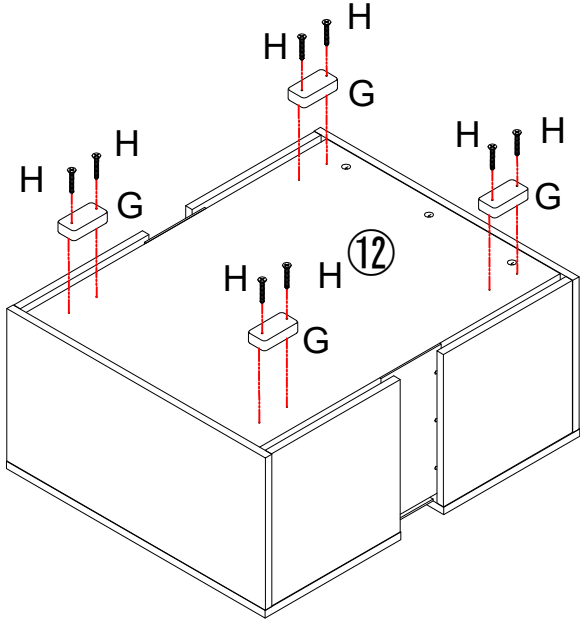
## STEP 9


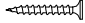


# STEP 10



# STEP 11



<b>G</b>		4PCS 3.5*25
<b>H</b>		8PCS





Bitte beachten Sie: Teil Nr. ① ② ⑦ ⑧ ⑬ ⑭ ⑮ ⑯ , sind mit einer dichten Kunststoffschutzfolie abgedeckt. Wenn das Produkt nach der Demontage Kratzer aufweist, machen Sie sich bitte keine Sorgen, es handelt sich nicht um einen Produktschaden. Bitte ziehen Sie die schützende Kunststofffolie auf der Oberfläche entlang der Kante langsam ab. Nach dem Abziehen wird das Produkt glatt und sauber.

PLEASE NOTE: Part number . ① ② ⑦ ⑧ ⑬ ⑭ ⑮ ⑯ , are covered with a tight plastic protective film. If there are scratches on the product after disassembly, please don't worry, it's not product damage. Please slowly tear off the protective plastic film on the surface along the edge. After peeling off, the product becomes smooth and clean.

# LEDLight

Wenn Sie die Lichter nicht erfolgreich arbeiten lassen können, überprüfen Sie bitte die Folgendes:

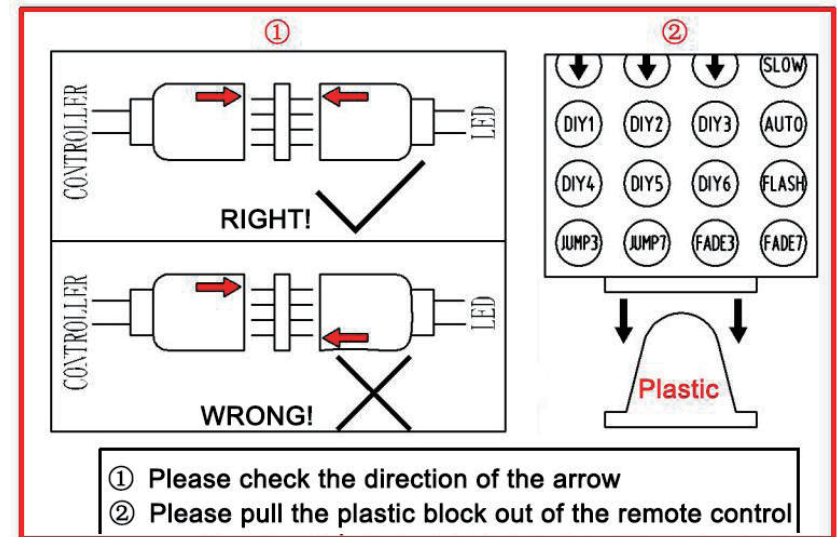
1. Bitte überprüfen Sie die Richtung der Verbindung, versuchen Sie es in der entgegengesetzten Richtung Richtung gemäß folgendem Bild.

2. Bitte überprüfen Sie die Fernbedienung. Sie müssen die Fernbedienung abreißen Plastikseptum vor Gebrauch.

3. Lassen Sie die Fernbedienung nicht zu weit vom Empfänger entfernt sein

Es gibt kein Hindernis zwischen ihnen.

4. Bitte beachten Sie, dass die Fernbedienung für den Transport keine Batterien enthält. Das Batteriemodell lautet: CR2025

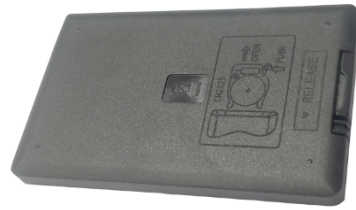


HINWEIS: Der Akku in der Fernbedienung erfordert, dass Sie Sie selbst kaufen und installieren.  
Modell: CR2025 3.V

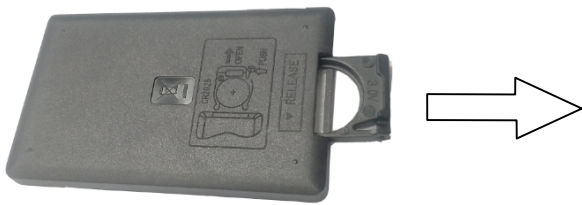
1



2



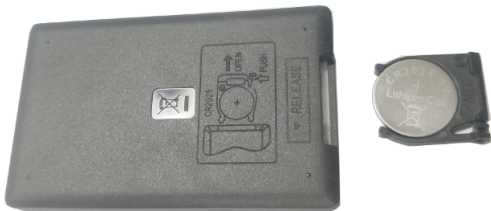
3



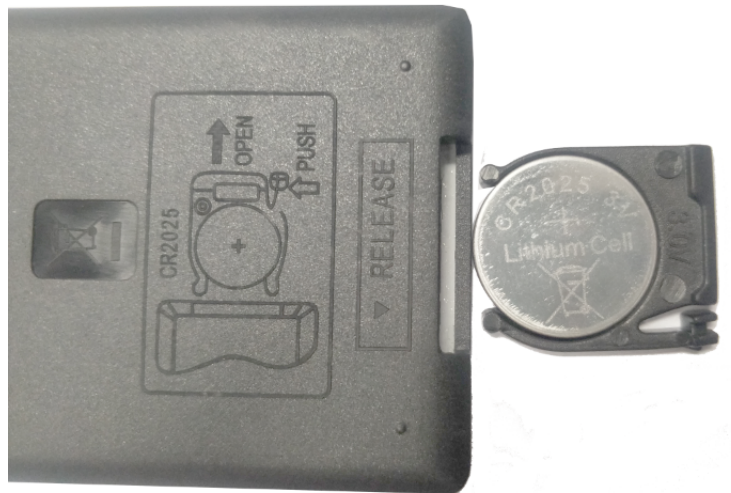
4



5

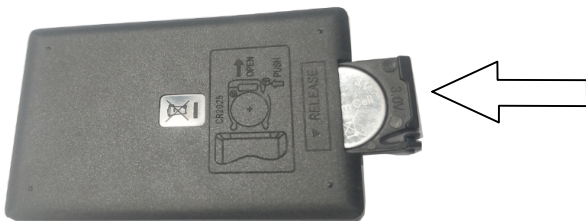


6



Modell : CR2025 3.V

7



8

