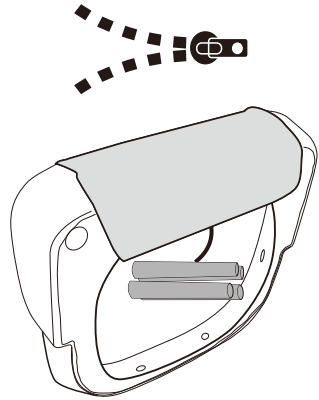


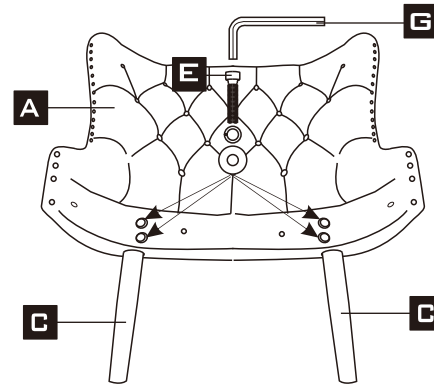
# ASSEMBLY INSTRUCTION

HFSN-1158



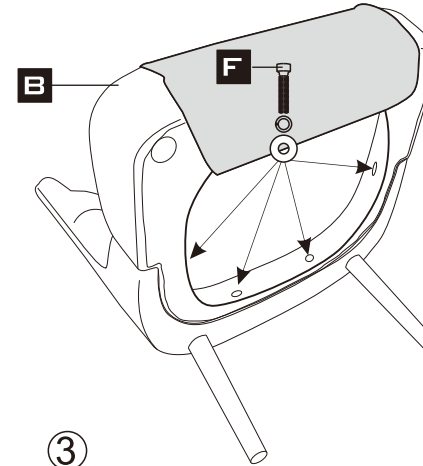
①

Unzip the black dust cover and take out the leg and hardware screw bag



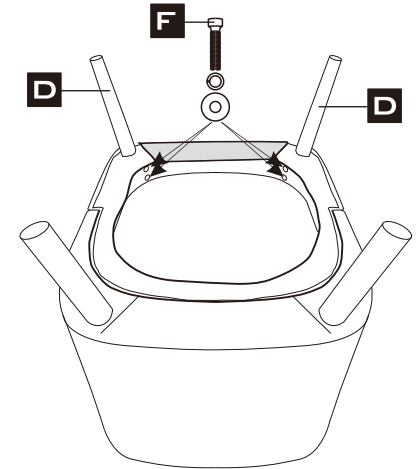
②

Put the screws in the holes, tight the screws, 100% is ok



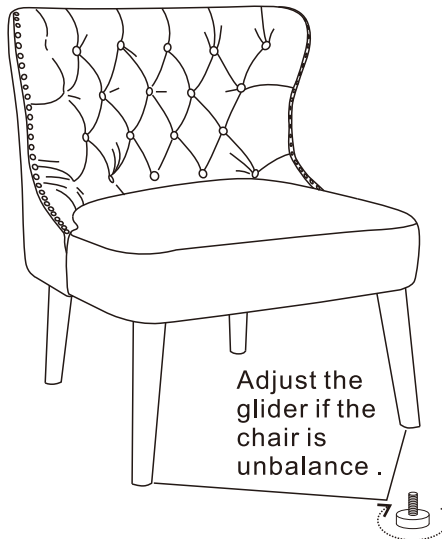
③

Put the screws in the holes, tight the screws, but not too tight, 90% is ok



④

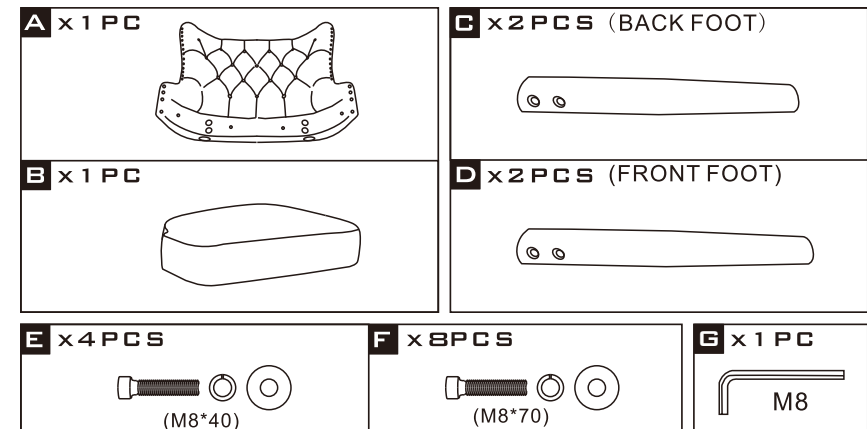
Put the screws in the holes, tight the screws, but not too tight, 90% is ok



⑤

Stand the chair upright & ensure it is level before tightening all screws. Then tight all the screws to 100% Then Stick the black part on the seat

Adjust the glider if the chair is unbalance .



Please find hardware pack inside the dust cover underneath seat cushion