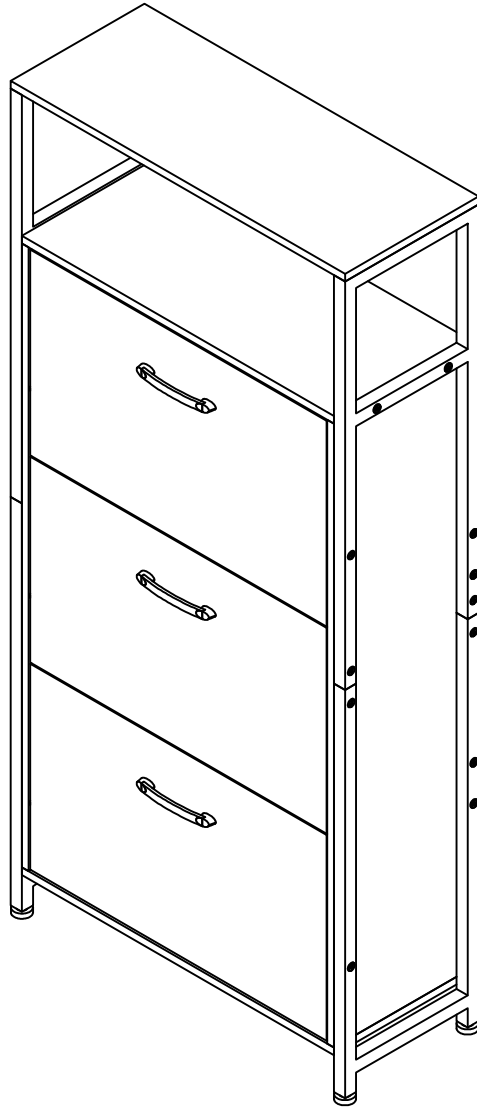


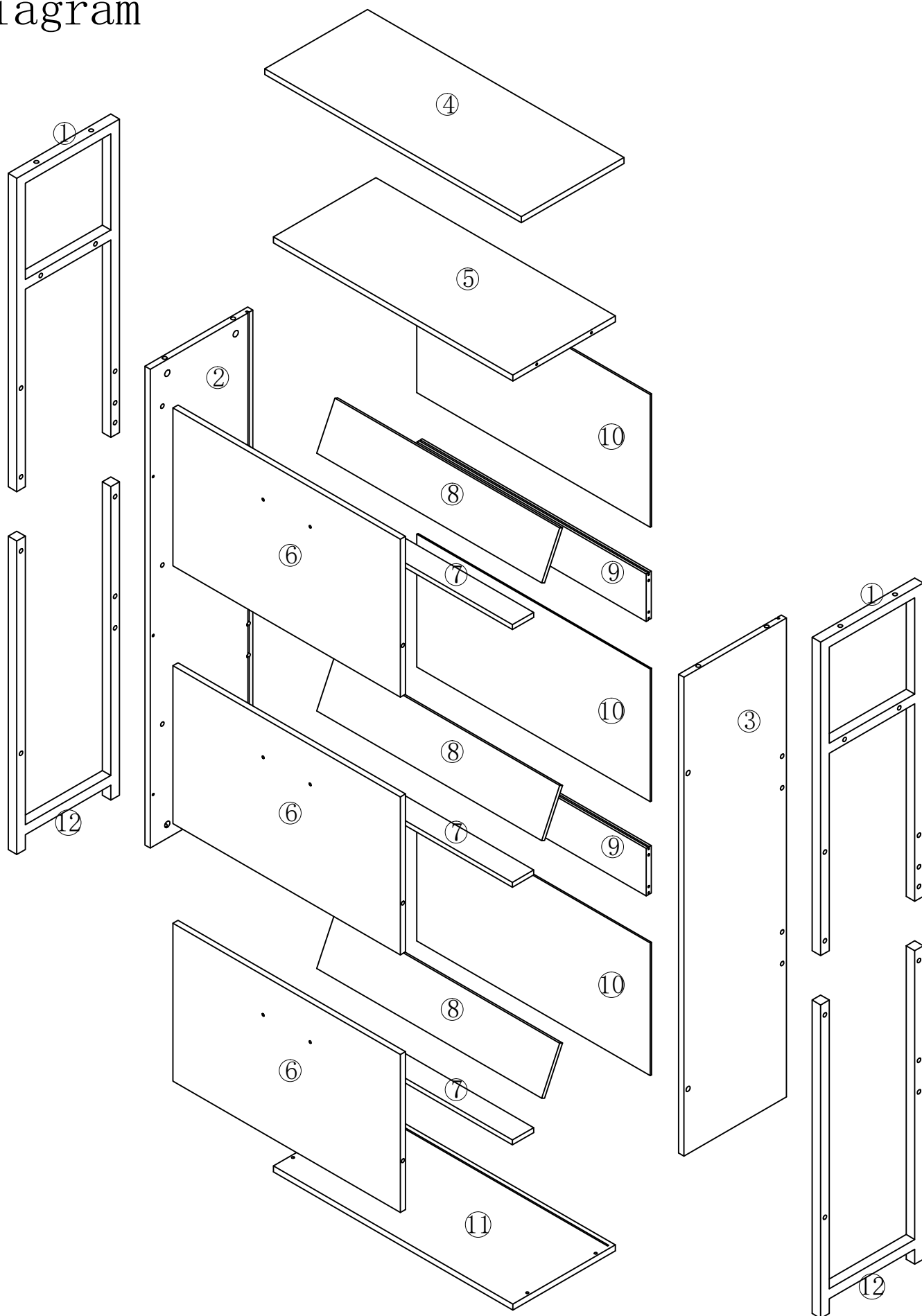
Tay0003



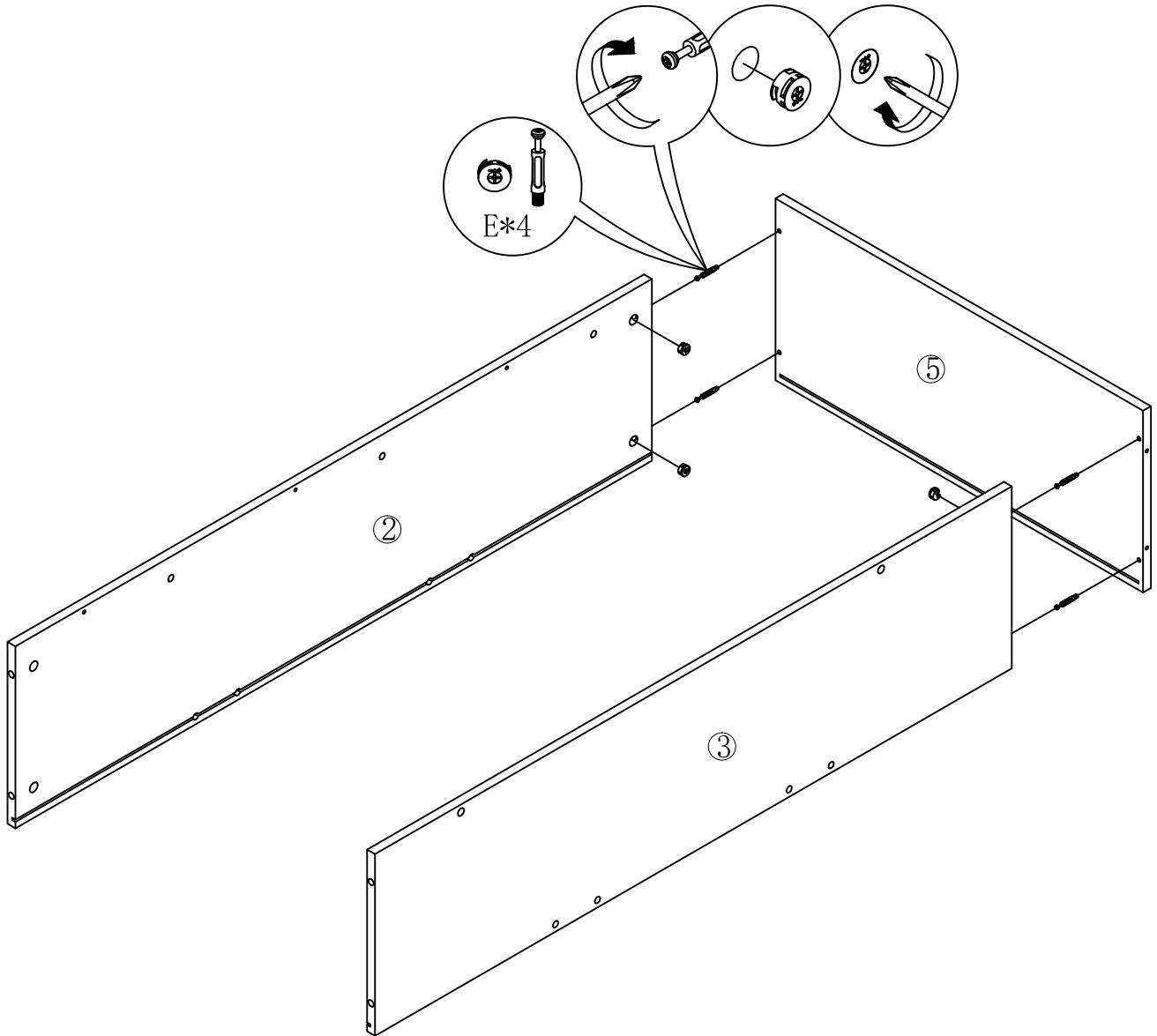
PART LIST

<p>A</p> <p>x 3</p>	<p>B</p> <p>x 6</p>	<p>C</p> <p>x 3</p>	<p>D</p> <p>1.6cm x 7</p>	<p>E</p> <p>x 9</p>	<p>F</p> <p>5cm x 14</p>	<p>G</p> <p>2.5cm x 9</p>
<p>H</p> <p>x 6</p>	<p>I</p> <p>x 4</p>	<p>J</p> <p>1.2cm x 38</p>	<p>H</p> <p>x 4</p>	<p>I</p> <p>1cm x 9</p>	<p>x 1</p>	<p>x 1</p>

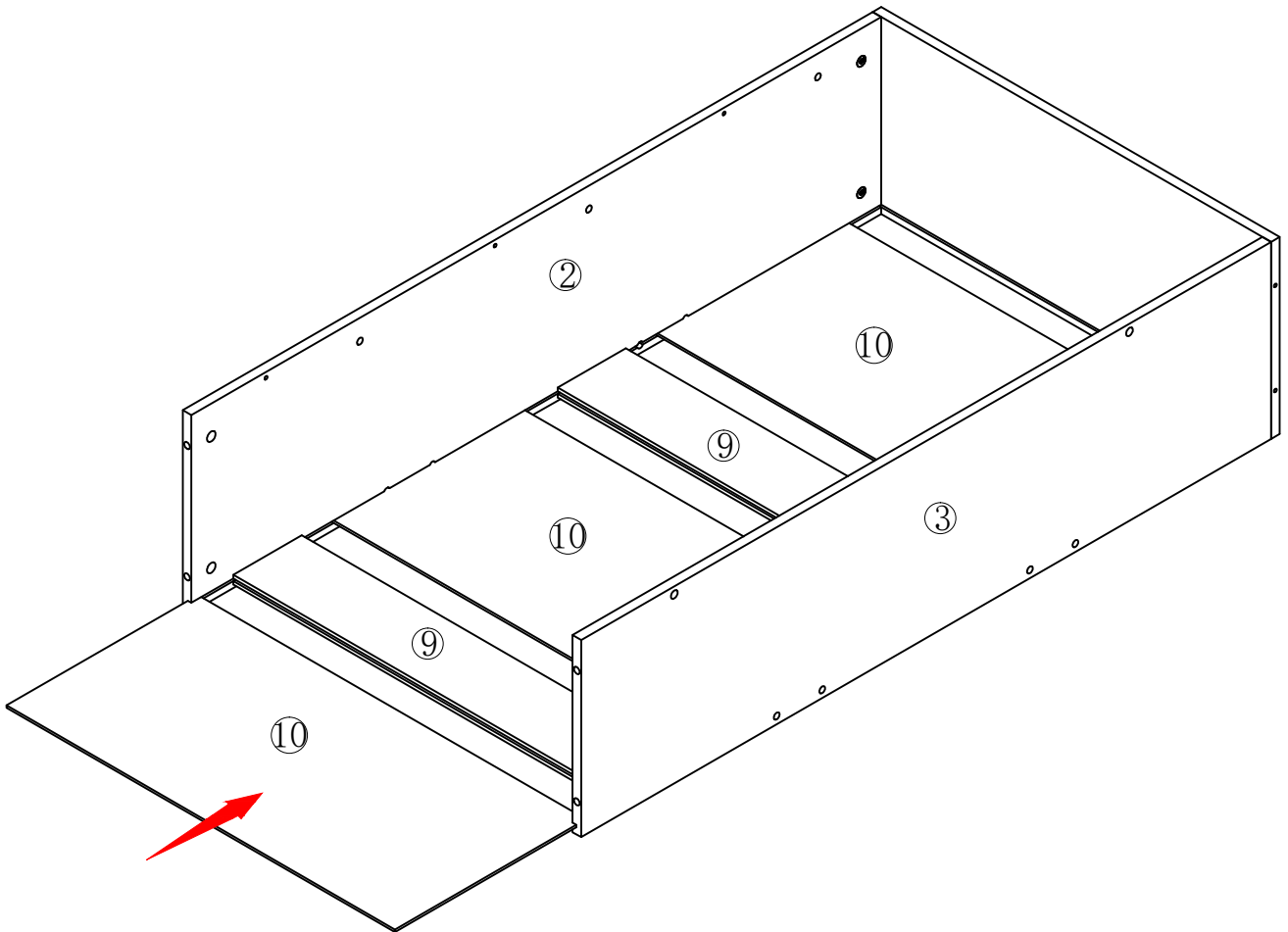
# Explosion Diagram



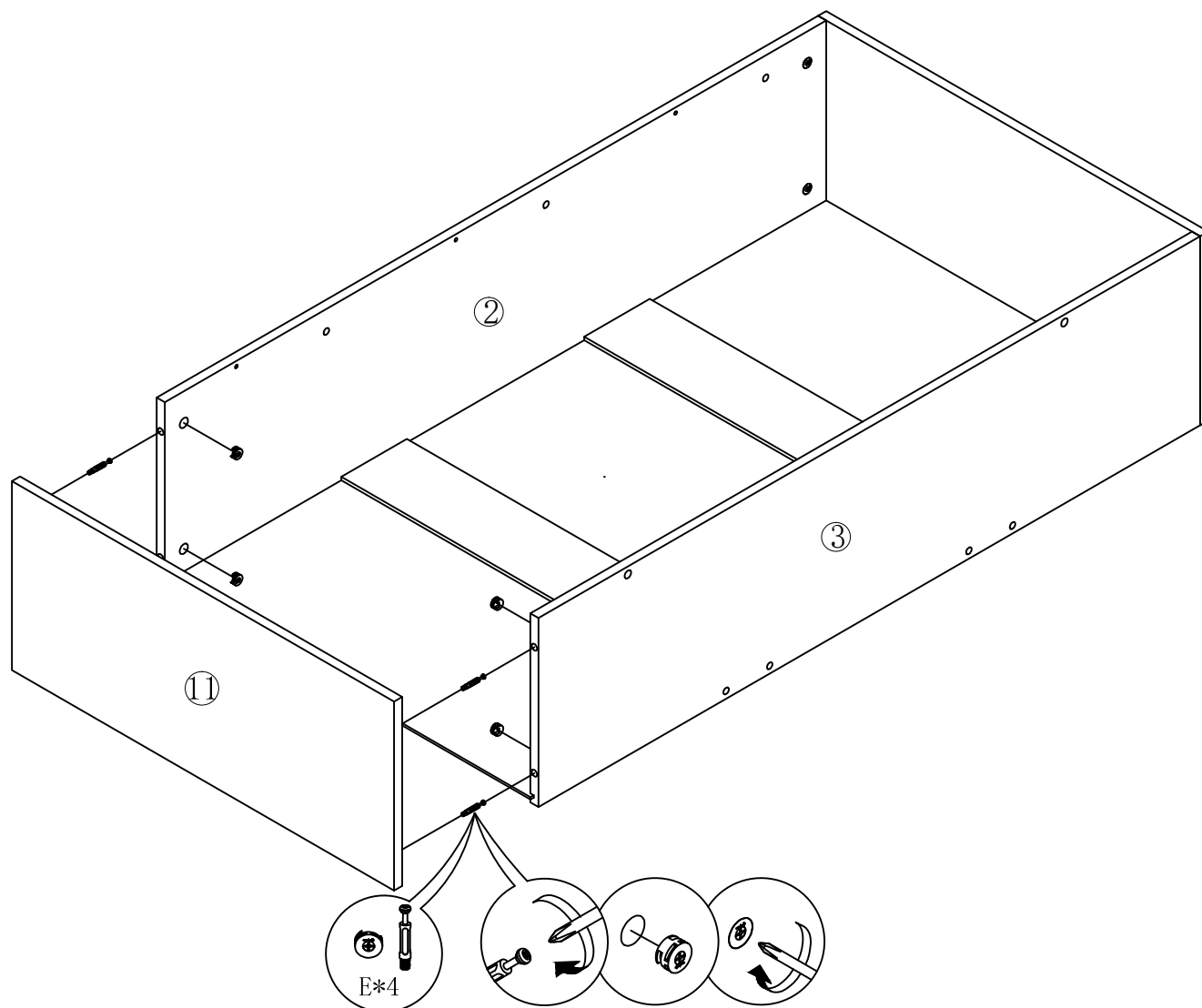
1



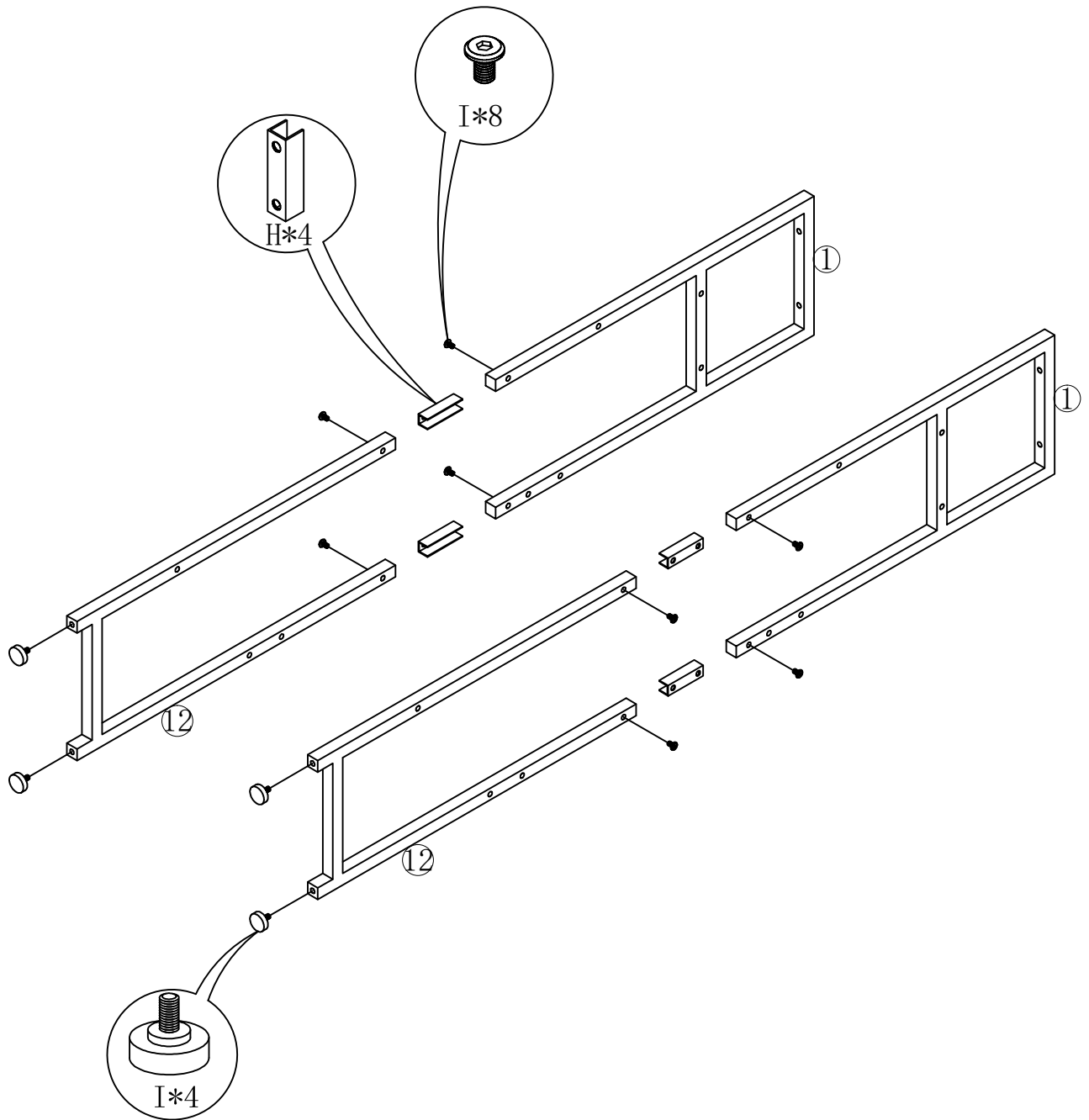
STEP 1: first the e-eccentric rod screw into 5 plate,  
STEP 2: then the E-eccentric wheel into 2,3 plate and lock.



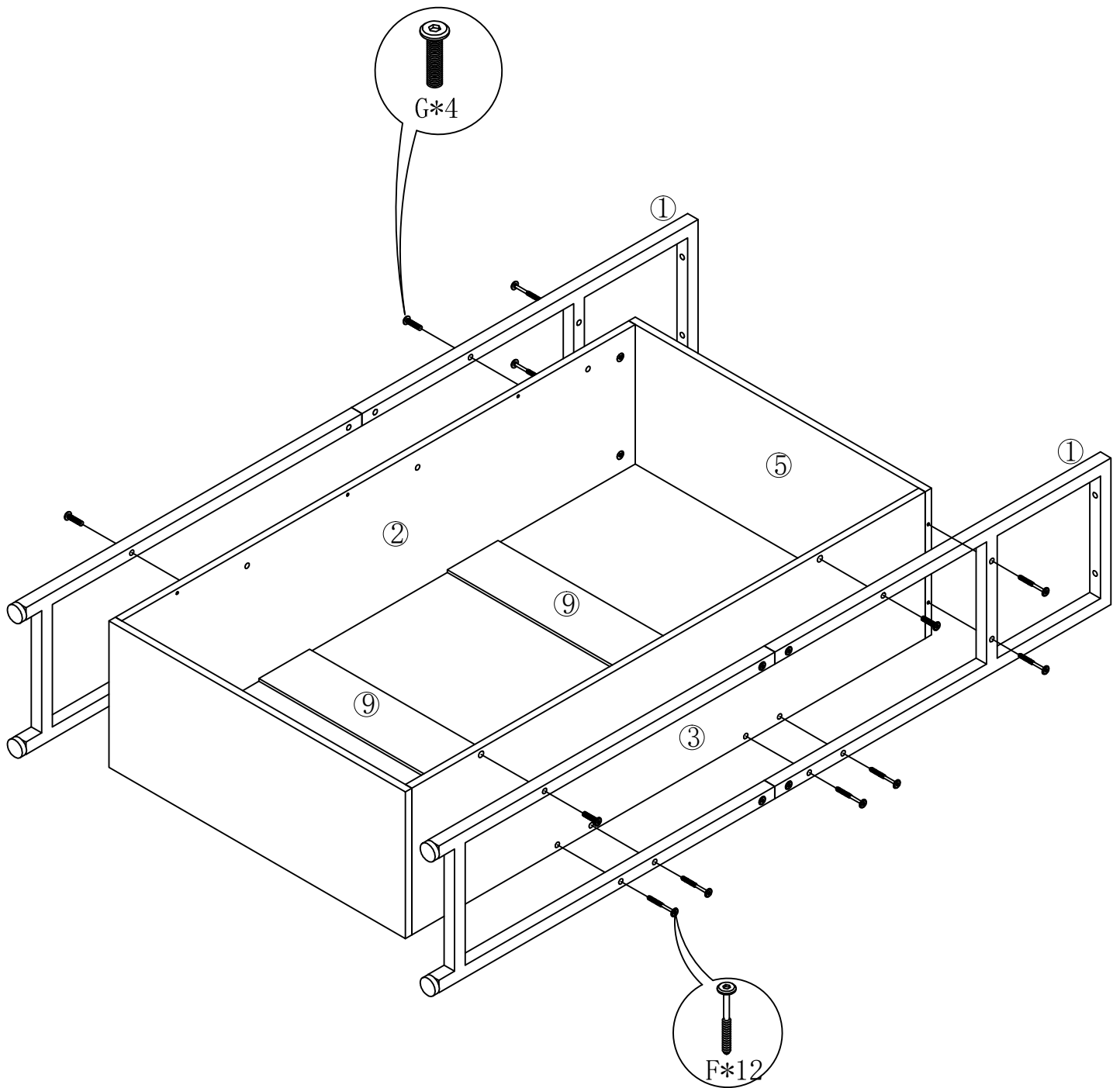
STEP 1: Insert No. 9 and No. 10 plates into the notches of No. 2 and No. 3 plates in sequence.



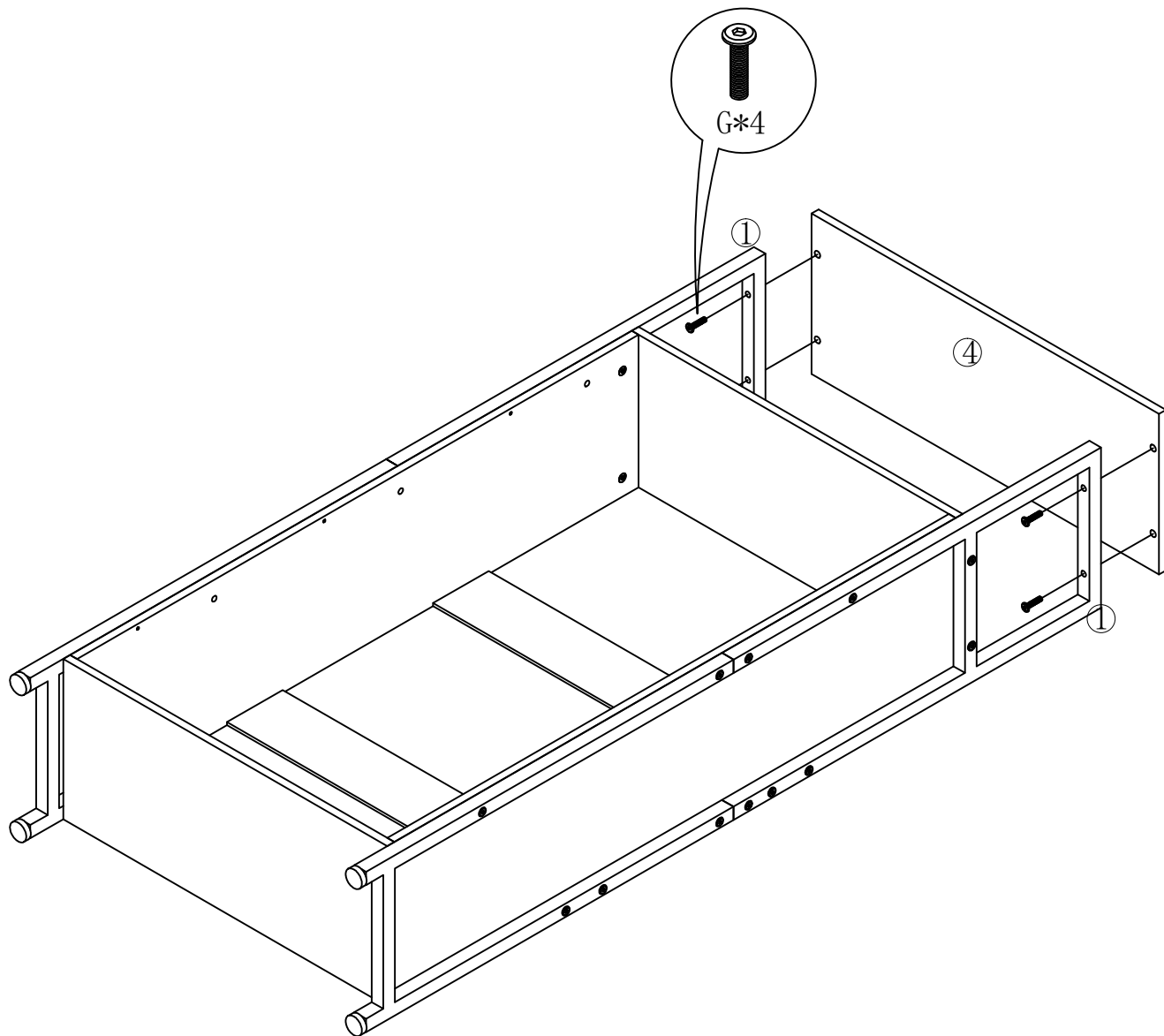
STEP 1: first the e-eccentric rod screw into 11 plate,  
STEP 2: then the E-eccentric wheel into 2,3 plate and lock.



STEP 1: First, insert the H fitting into the No. 1 and No. 12 steel frames, then use the I screw to connect and fix the H fitting through the No. 1 and No. 12 steel frames,  
STEP 2: Screw Part I into the bottom of steel frame No. 1.

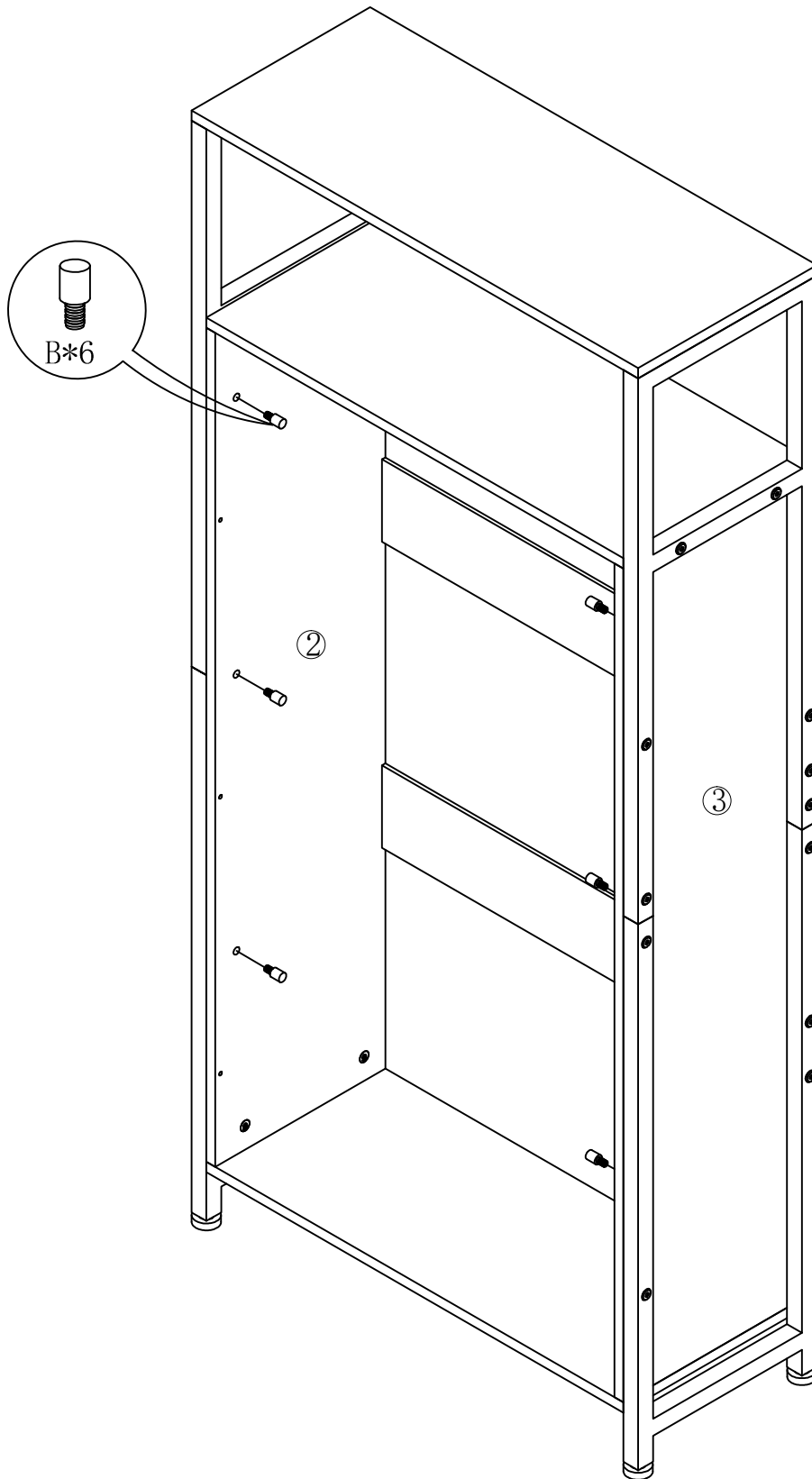


STEP 1: Connect and fix F screw through No. 1 steel frame to No. 5 and No. 9 plate.  
STEP 2: Connect and fix the G screw through No. 1 steel frame to No. 2 and No. 3 plates.

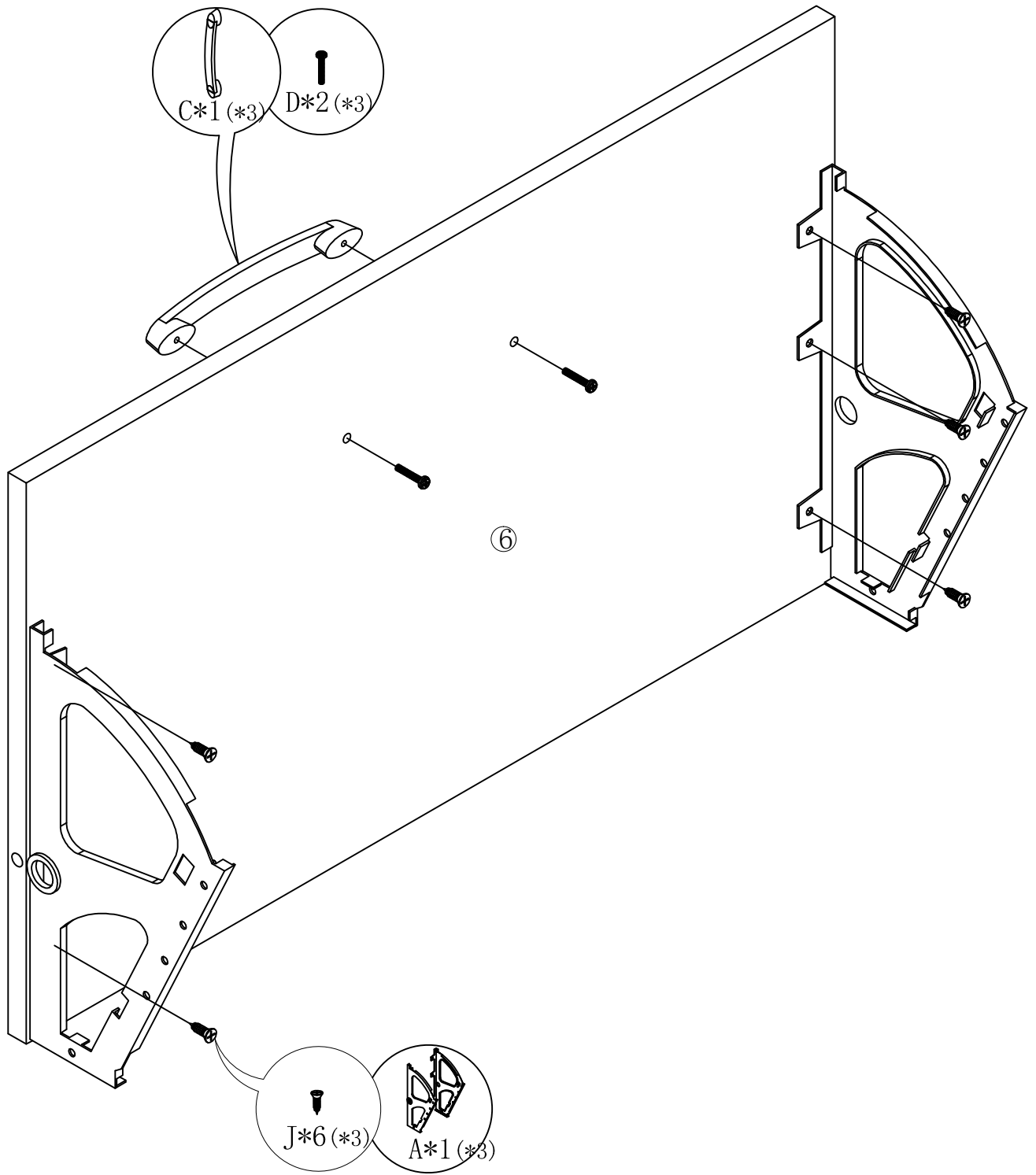


STEP 1: Connect and fix the G screw through No. 1 steel frame and No. 4 plate.

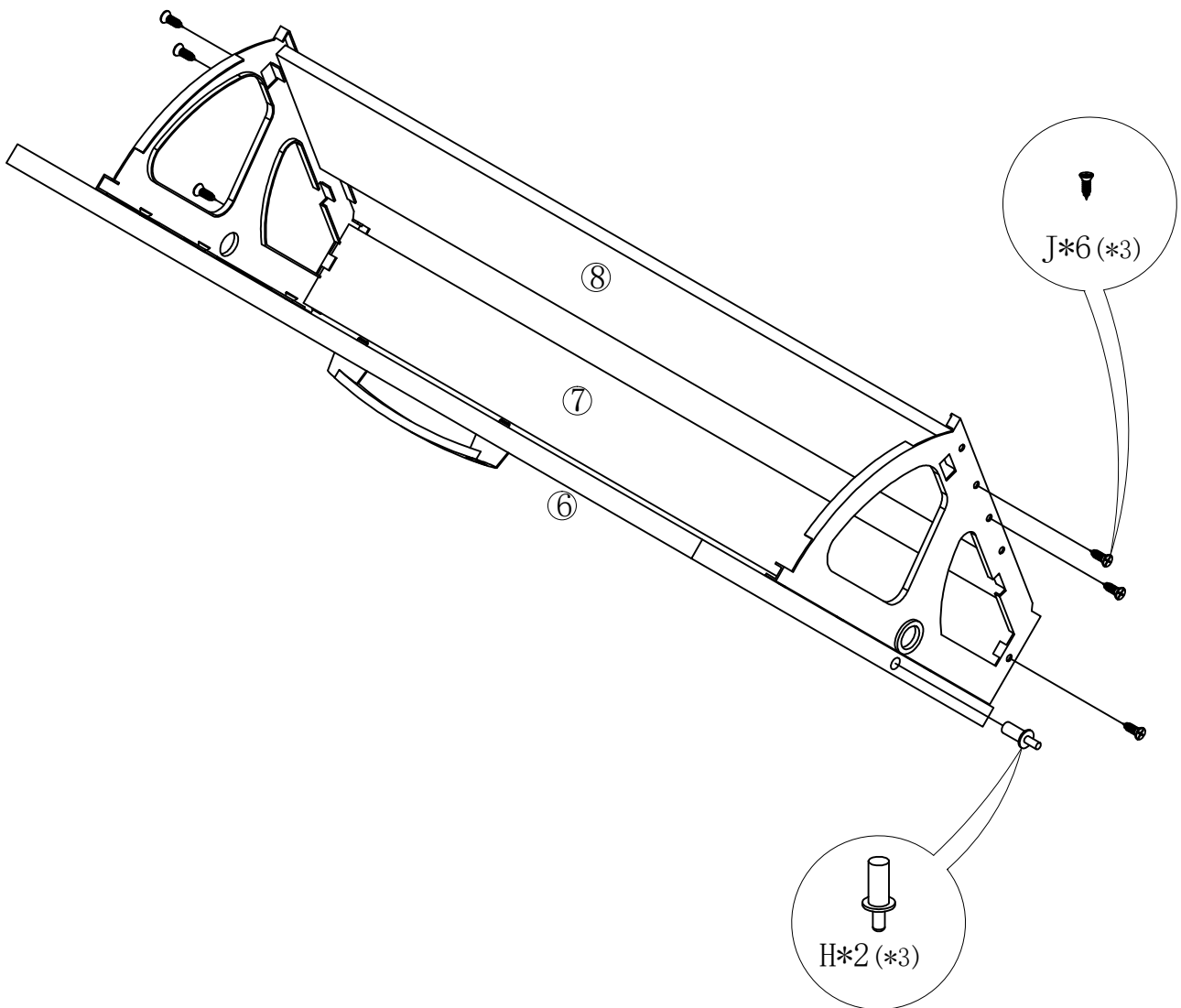




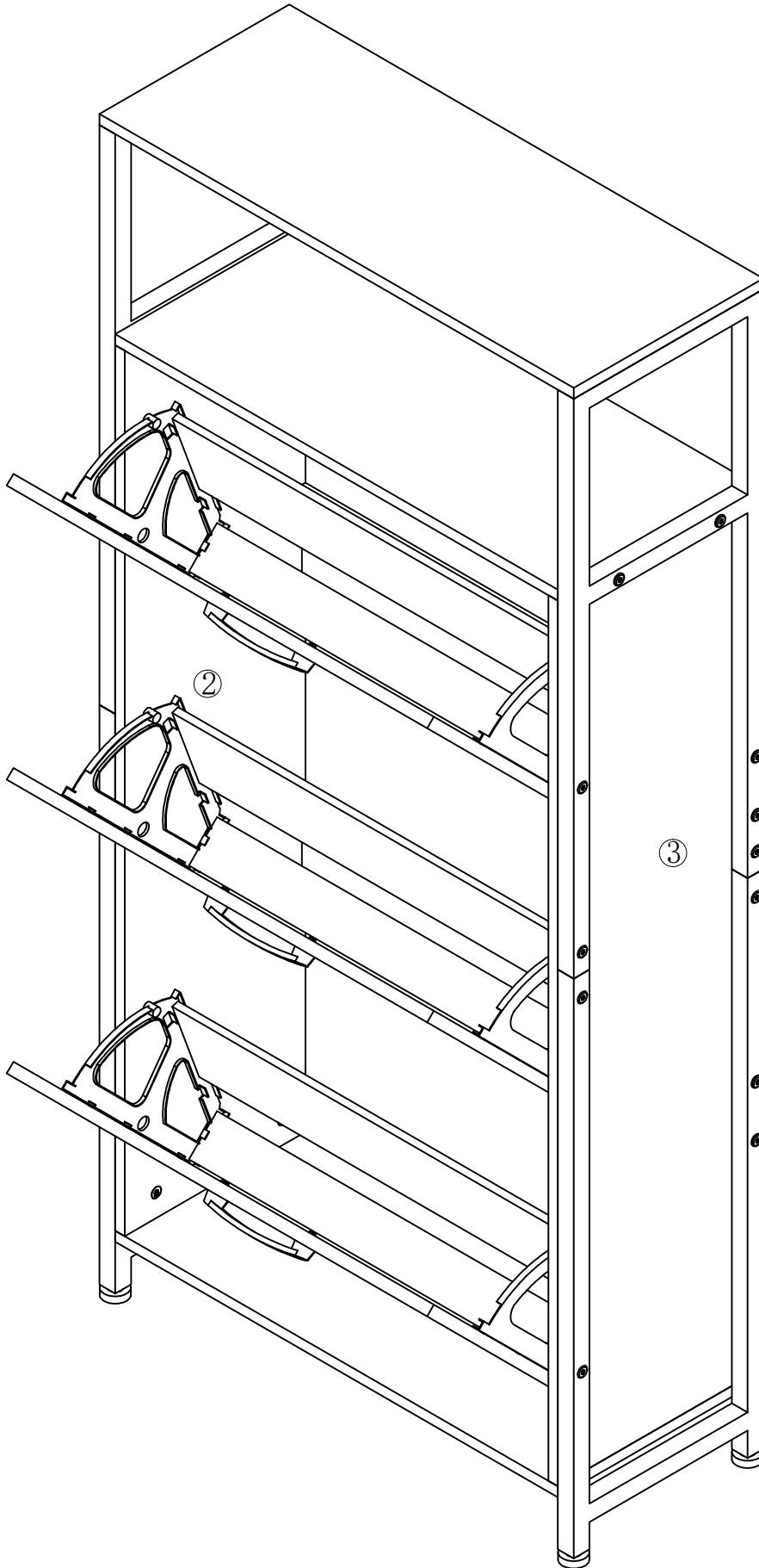
STEP 1: Insert Part B on board 2 and 3.



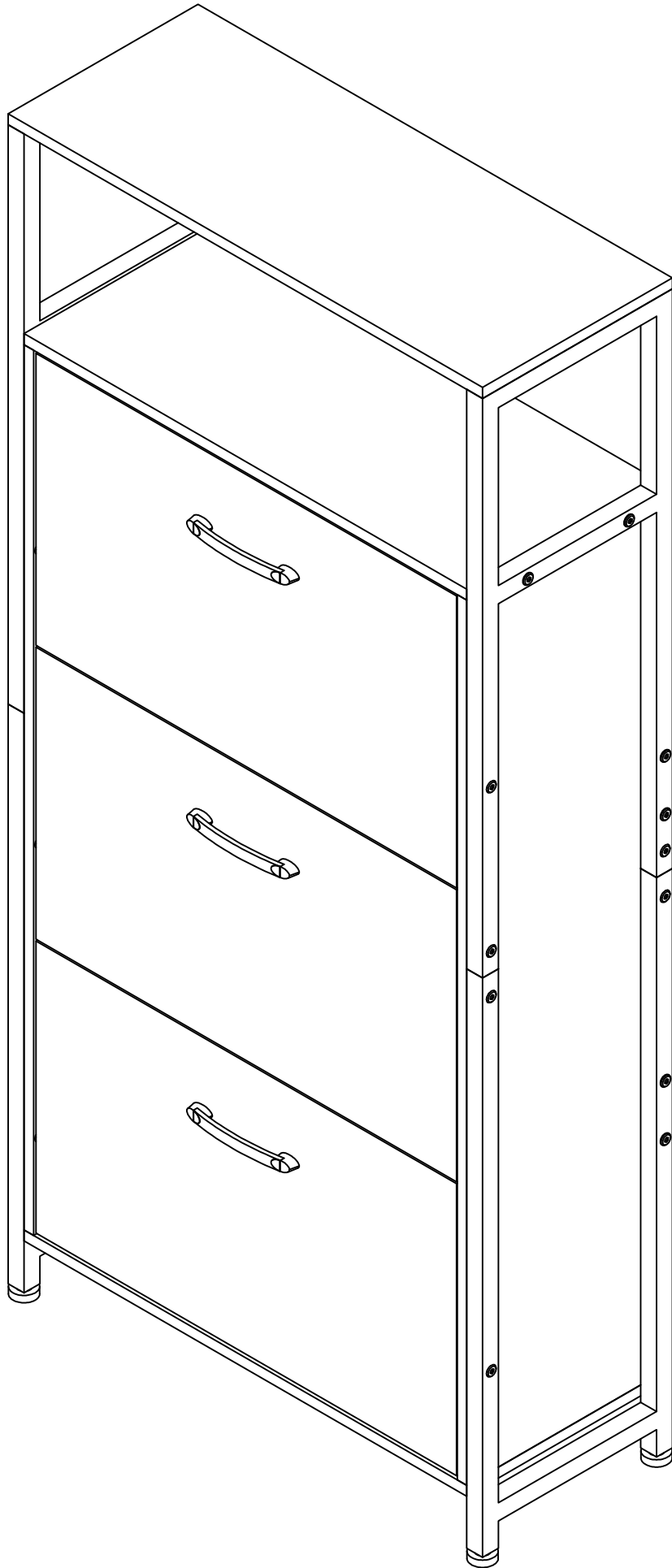
STEP 1: Fix the j-screw through the A-piece and the 6-piece.  
STEP 2: Fix Screw D through plate 6 and handle C.



STEP 1: Fix j-screw through A-part to 7-plate and 8-plate,  
STEP 2: Insert the H fitting into the hole corresponding to the side of  
plate 6.



STEP 1: Insert the whole part installed in step 9 between plate 2 and plate 3.



THE END.