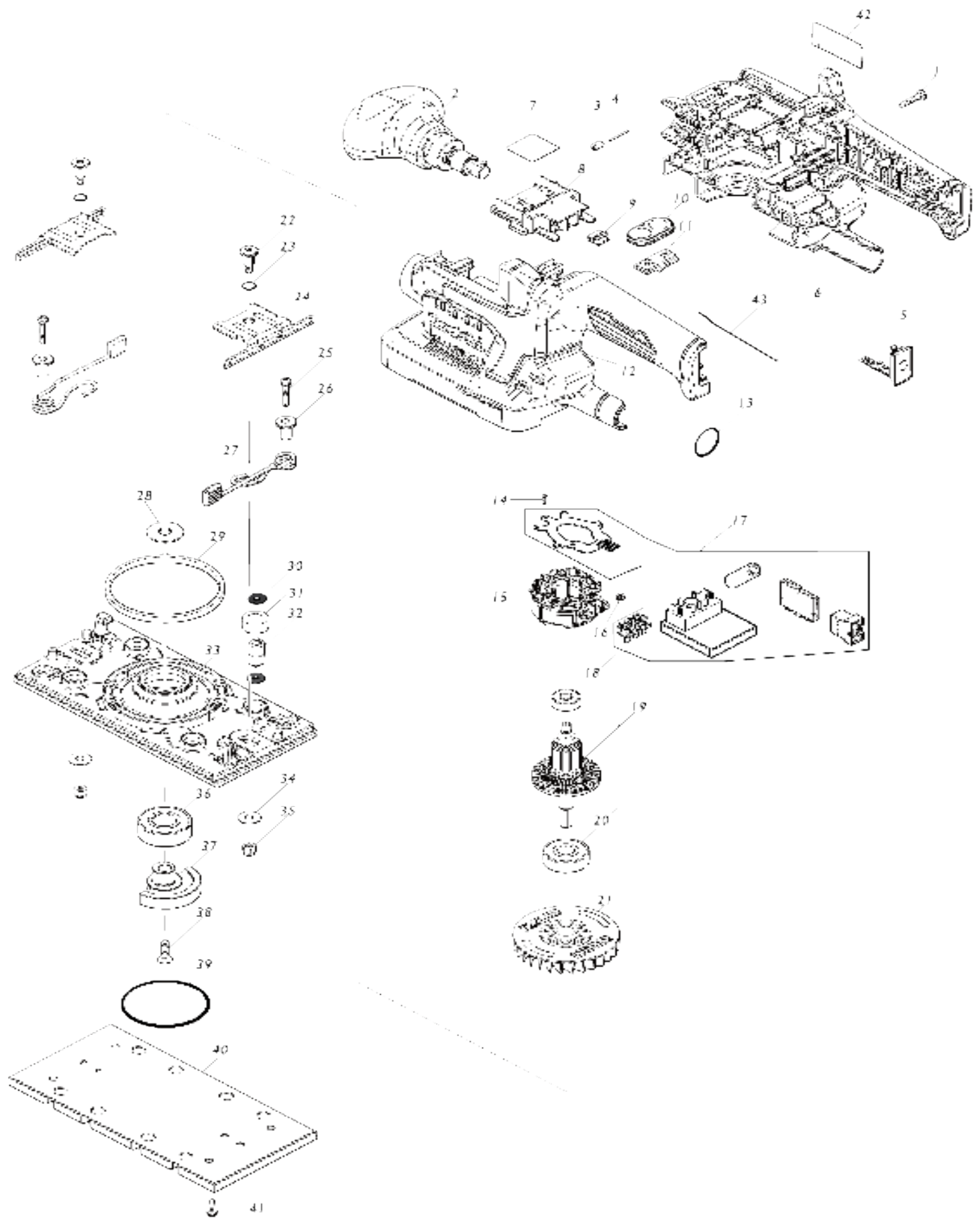


Model No.DBO381 CORDLESS FINISHING SANDER



Model No.DBO381 CORDLESS FINISHING SANDER

| Item No. | Parts No. | Description | Interchangability | Q'ty | New/Old | Note1 | Note2 |
|----------|-----------|--------------------------------|-------------------|------|---------|-------|-------|
| 001 | 265995-6 | TAPPING SCREW 4X18 | | 9 | | | |
| 002 | 122A91-8 | FRONT GRIP ASSEMBLY | | 1 | | | |
| 003 | 263036-2 | RUBBER PIN 5 | | 1 | | | |
| 004 | 268284-8 | PIN 1.5 | | 1 | | | |
| 005 | 140F99-0 | CAP COMPLETE | | 1 | | | |
| C10 | 213A05-9 | O-RING16 | | 1 | | | |
| 006 | 183T93-3 | HOUSING SET | | 1 | | | |
| C10 | 263005-3 | RUBBER PIN 6 | | 2 | | | |
| D10 | | INC. 12 | | | | | |
| 007 | 8111L2-9 | DBO381 SERIAL NO. LABEL | | 1 | | | |
| 008 | 643874-2 | TERMINAL | | 1 | | | |
| 009 | 424517-3 | CUSHION | | 1 | | | |
| 010 | 141E90-5 | SWITCH PLATE COMPLETE | | 1 | | | |
| 011 | 632K92-3 | SWITCH UNIT | | 1 | | | |
| 012 | 183T93-3 | HOUSING SET | | 1 | | | |
| C10 | 263005-3 | RUBBER PIN 6 | | 2 | | | |
| D10 | | INC. 6 | | | | | |
| 013 | 213315-8 | O RING 19 | | 1 | | | |
| 014 | 266490-9 | TAPPING SCREW PT 2X6 | | 3 | | | |
| 015 | 629491-2 | STATOR | | 1 | | | |
| 016 | 652069-6 | FLAT HEAD SCREW M3X6 | | 3 | | | |
| 017 | 620G24-8 | CONTROLLER | | 1 | | | |
| 018 | 210022-4 | BALL BEARING 626DDW | | 1 | | | |
| 019 | 519705-6 | ROTOR ASSY | | 1 | | | |
| D10 | | INC. 18,20 | | | | | |
| 020 | 211087-9 | BALL BEARING 6200DDW | | 1 | | | |
| 021 | 240230-3 | FAN 68 | | 1 | | | |
| 022 | 266511-7 | + FLAT FILLISTER HEAD SCREW M5 | | 2 | | | |
| 023 | 213045-1 | O-RING 6 | | 2 | | | |
| 024 | 346102-1 | PAPER CLAMP | | 2 | | | |
| 025 | 911136-9 | PAN HEAD SCREW M4X20 | | 2 | | | |
| 026 | 310300-3 | SPRING GUIDE | | 2 | | | |
| 027 | 162279-2 | LEVER COMPLETE | | 2 | | | |
| 028 | 267353-2 | FLAT WASHER 8 | | 1 | | | |
| 029 | 423469-5 | SPONGE 7X105X3 | | 1 | | | |
| 030 | 213983-7 | O RING 4 | | 8 | | | |
| 031 | 424056-3 | SPONGE SLEEVE 9 | | 4 | | | |
| 032 | 318151-8 | FOOT | | 4 | | | |
| 033 | 318484-1 | BASE | | 1 | | | |
| 034 | 253807-5 | FLAT WASHER 5 | | 2 | * | | |
| 034-1 | 253572-6 | FLAT WASHER 5 | < | 2 | | | |
| 035 | 252103-8 | HEX. LOCK NUT M5-8 | | 2 | | | |
| 036 | 211228-7 | BALL BEARING 6202DDW | | 1 | | | |
| 037 | 313395-5 | BALANCER | | 1 | | | |
| 038 | 912222-9 | COUNTERSUNK HEAD SCREW M5 X16 | | 1 | | | |
| 039 | 213656-2 | O RING 53 | | 1 | | | |

| | | | | | | |
|-------|-----------|---------------------------------|---|---|---|--|
| 040 | 140441-9 | PAD COMPLETE | | 1 | | |
| 041 | 911111-5 | PAN HEAD SCREW M4X10 WITH W | | 4 | | |
| 042 | 8111K8-0 | DBO381 NAME PLATE | | 1 | | |
| 043 | 327983-2 | EARTH WIRE | | 1 | | |
| A01 | 140115-2 | DUST BAG COMPLETE | | 1 | | |
| A02 | 451271-6 | PUNCH PLATE | | 1 | | |
| A03 | A-31267 | ABRASIVE PAPER 93X228 #120 | | 1 | | |
| A04 | 422807-8 | BATTERY PROTECTOR | | 1 | | |
| A05 | 450128-8 | BATTERY COVER | | 1 | | |
| A06 | ***DC18RC | DC18RC FAST CHARGER | | 1 | | |
| D10 | | COMPO-PARTS | | | | |
| A07 | 197280-8 | BATTERY BL1850B SET | | 2 | | |
| A08 | 821551-8 | CONNECTOR PLASTIC CASE (TYP E3) | | 1 | | |
| C10 | 453974-8 | LATCH | | 4 | | |
| A09 | 8351P0-7 | INNER TRAY | | 1 | | |
| A10 | 8043F4-2 | DBO381RTJ PLASTIC CASE LABEL | | 2 | | |
| A11 | 8043F3-4 | DBO381RTJ INDICATION LABEL | | 1 | | |
| F05 | 194947-9 | PUNCH PLATE SET | | 1 | | |
| F17 | 195134-3 | FILTER SET | | 1 | | |
| F21-1 | 198900-7 | WIRELESS UNIT SET | < | 1 | | |
| A10 | 8043F9-2 | DBO381RTJU PLASTIC CASE LABEL | | 2 | | |
| A11 | 8043F8-4 | DBO381RTJU INDICATION LABEL | | 1 | | |
| A12 | 198900-7 | WIRELESS UNIT SET | | 1 | * | |
| A12-1 | 198900-7 | WIRELESS UNIT SET | < | 1 | | |

Please state Parts No. when your order.

Print Date 06/10/2024