

IMPORTANT:

The product is powered by electricity. In order to avoid burns, fire and electric shock, please read the instructions carefully. Failure to read, thoroughly understand, and follow all instructions can result in serious personal injury, damage to equipment, or voiding of factory warranty. Should you ever have any questions or feel you require help please contact your place of purchase for assistance.

Instructions of Safety and Warnings

- Make sure that the mounting surface is strong enough to handle mounted product and equipment.
- **DO NOT EXCEED MAXIMUM LISTED WEIGHT CAPACITY.**
- Always use an assistant or a mechanical lifting device to safely lift and position heavy products.
- Tighten screws firmly, but do not over tighten. Over tightening can cause product damage that greatly reduces the holding power.
- Keep a clear area and distance from moving parts when using the product.
- Use only as intended. Never stand, hang or climb on the product.
- This product is intended for indoor use only.
- Any attempts to reconstruct the construction or alterations of the given power unit and control box aren't allowed.
- This product may contain small items that could be a choking hazard if swallowed. Keep children away unless the product is intended for their use and all instructions and manuals are fully reviewed and understood by them.
- Check that the product is secure and safe to use at regular intervals (at least every three months).

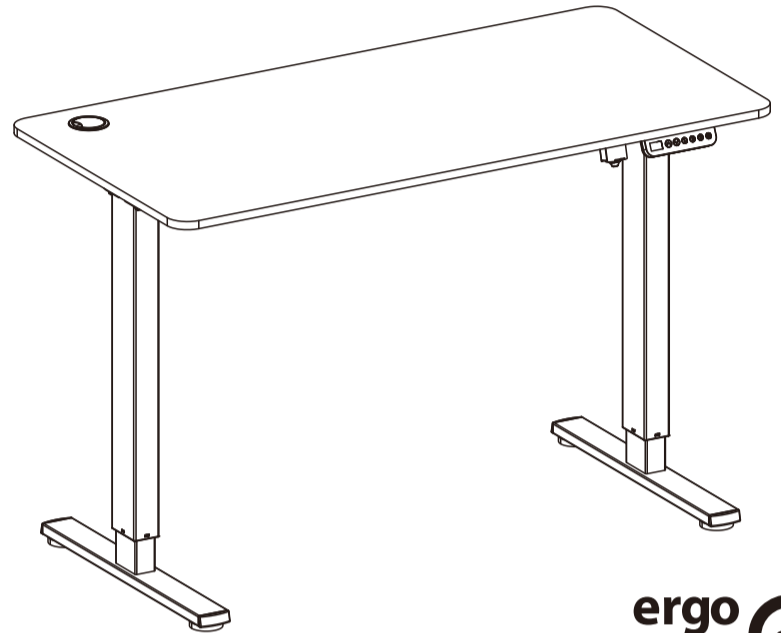
Other Cautions

- Don't clean the product with water while the power is still connected.
- Don't disassemble or replace components while the power is still connected.
- Never operate the system with a damaged cord or plug.
- Never operate the system if it's in moist environment or its electrical components have contact with liquids.
- If the control box makes unusual noise or smells, switch off the mains voltage immediately.

Disposal: The product with this mark indicates that this product shouldn't be disposed with other household wastes throughout the EU. To prevent possible harm to the environment or human health from uncontrolled waste disposal, recycle it responsibly to promote the sustainable reuse of material resources. To return your used device, please use the local recycle service or contact your point of purchase to withdraw the product.

EN Electric lift desk with top

- PL **Biurko podnoszone elektrycznie z blatem**
- DE **Elektrischer Lifttisch mit Platte**
- FR **Bureau à élévation électrique avec plateau**
- ES **Pupitre elevador eléctrico con tablero**
- IT **Scrivania elettrica con piano d'appoggio**
- NL **Elektrisch hefbureau met blad**
- CZ **Elektrický zvedací stůl s horní deskou**
- RO **Birou cu lift electric cu top**



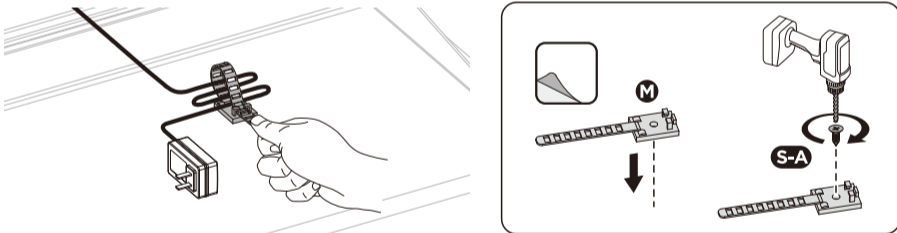
ergo office

ER-451

V1

8. Cable Management

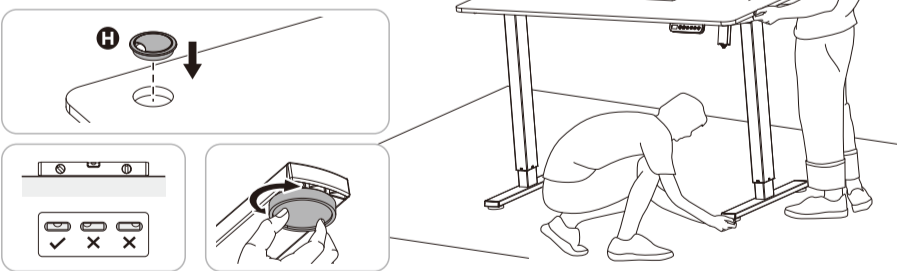
- Organize the cables using the **Cable Ties M**.
- Attach the Cable Ties to the desktop with **Screws S-A**.



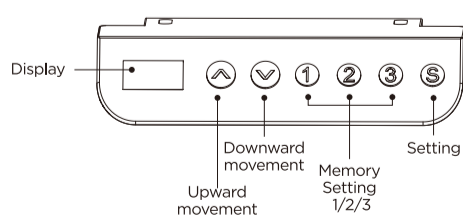
9. Attaching the Decorative Cover and adjusting the Desk

- If the floor isn't even, simply rotate the pad to adjust the level to make the desk stable.
Tip: Use a bubble level (not included) to check if the desktop is even.

CAUTION: At least two people are required when turning over the desk, or serious bodily injuries might occur.



Control Panel For Electric Height Adjustable Desk User Guide



Operation Instruction

- 1. When the system is powered on** (100-240VAC), the existing desktop height will be displayed on the controller. If the height displayed is not the same as the actual height, the user will need to reset the system before use.
- 2. Reset the System**
Press and hold the "▼" for 5 seconds after the desk moves to the lowest position, then the display shows "rst". Press and hold the "▼" again, the desks will move down a little and then bounce up about 5mm. Release the "▼" and the reset succeeds.
- 3. Upward/Downward Movement**
Press and hold the "▲" or "▼" until the desk reaches the desired height.

4. Memory Setting

To store a memory position, press "S" and the screen will show "S-", then press "1", "2" or "3". To call a stored position, press "1", "2" or "3" and the system will start moving to the desired position. You can press any button to stop the movement.

5. Screen Locking

To lock the control panel, simultaneously press and hold the "▲" and "▼" for 5 seconds till the screen shows "LOC". To unlock the control panel, simultaneously press and hold the "▲" and "▼" for 5 seconds till the screen shows numbers.

6. Power-Saving Mode

The system will automatically switch to the power-saving mode if there is no action for over 1 minute. Press any button to activate the control panel.

Custom Programming Guide

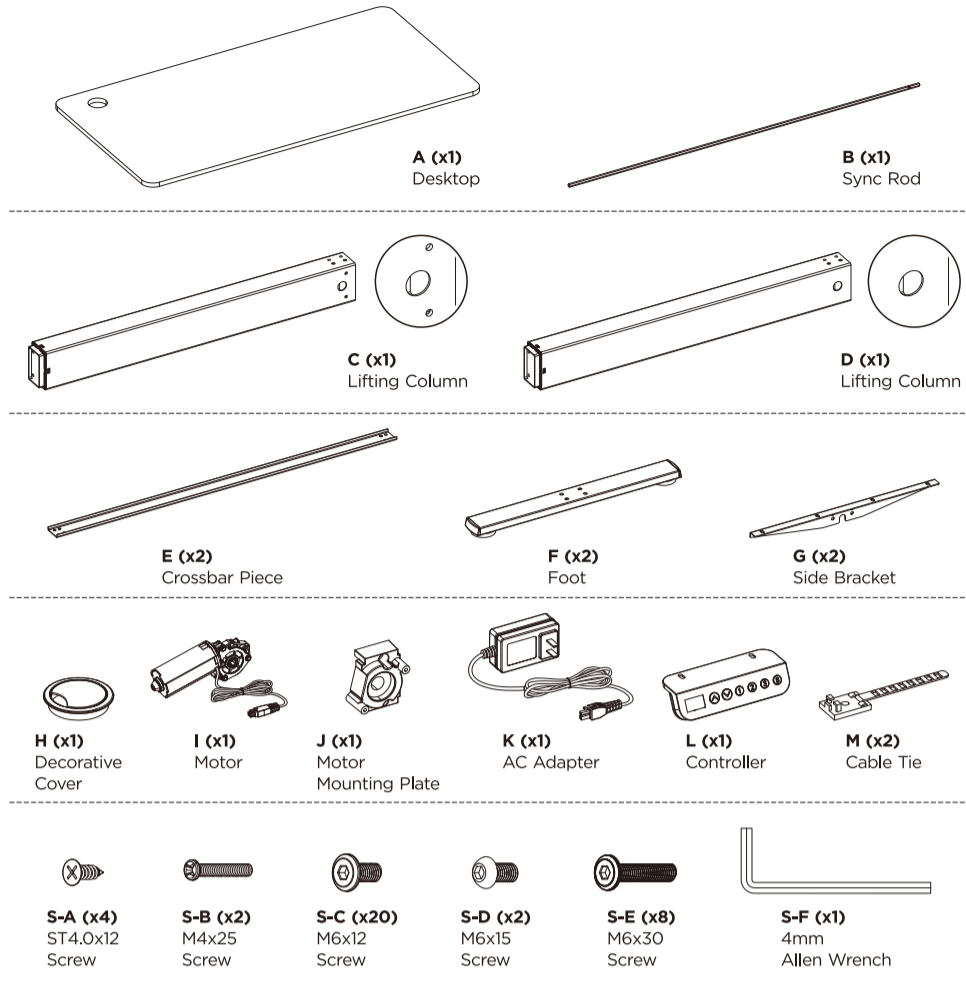
Mode	Operation 1	Operation 2	Operation 3
Customize Min. Height Limit		Press the "▲" or "▼" to your desired height value.	
Customize Max. Height Limit		Press the "S" again to call out the Max. Height Limit Setting mode. Then press the "▲" or "▼" to your desired height value.	Long press the "S" to store the setting. "SUS" - Success "FAL" - Failure
Anti-Collision Sensitivity (Upward Movement)	Press and hold the "S" for 5 seconds till the screen flashes the current minimal height limit, and the system enters the Min. Height Limit Setting mode.	Press the "S" twice and the screen will flash PCX (X stands for level 0-5). Press the "▲" or "▼" to your desired level.	Long press the "S" to store the setting. "SUS" - Success "FAL" - Failure
Anti-Collision Sensitivity (Downward Movement)		Press the "S" three times and the screen will flash dCX (X stands for level 0-5). Press the "▲" or "▼" to your desired level.	Note: The greater number stands for the higher sensitivity.
Switch Measurement		Press the "S" four times and the screen will flash "U-0" (CM Measurement Mode) or "U-1" (INCH Measurement Mode). You can press the "▲" or "▼" to switch the mode.	Long press the "S" to store the setting. "SUS" - Success "FAL" - Failure

Troubleshooting

Error No.	Description	Solution
SC2	Internal data error	Replace the control panel
r-6	The power supply voltage is abnormal	Repower the control panel; replace the power supply if the warning still exists
rst	Uninitialized	Perform reset
E10	Hardware is short-circuited	Repower the control panel; replace it if the repowering doesn't work
E11	Overload occurs	Reduce loading items
E12	Phase loss	Check the motor
E13	Hall signal is abnormal	Check the motor
E14	The collision avoidance system is activated	Remove the obstacles
E15	The motor stops running or is overcurrent	Check if the drive system has obstacles
E16	The motor is disconnected	Check the connection of motor cords

Checklist and Installation

Please check all of the components shown in the component checklist. If any of the components are missing or damaged, contact your point of purchase for a replacement.



What important specifications should know before installation?

Power Input
(100-240V)

Operation Temperature
(-5°C-+40°C)

Weight Capacity
70kg (154lbs)

What tools are needed to assemble the desk frame?

Allen Wrench
(Included)

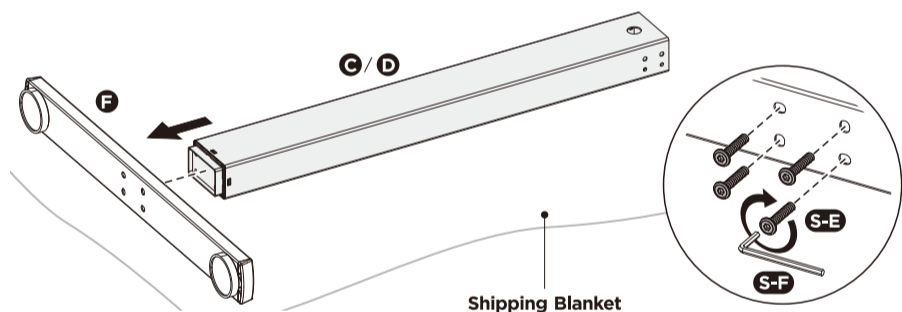
Phillips Screwdriver

Drill

Bubble Level

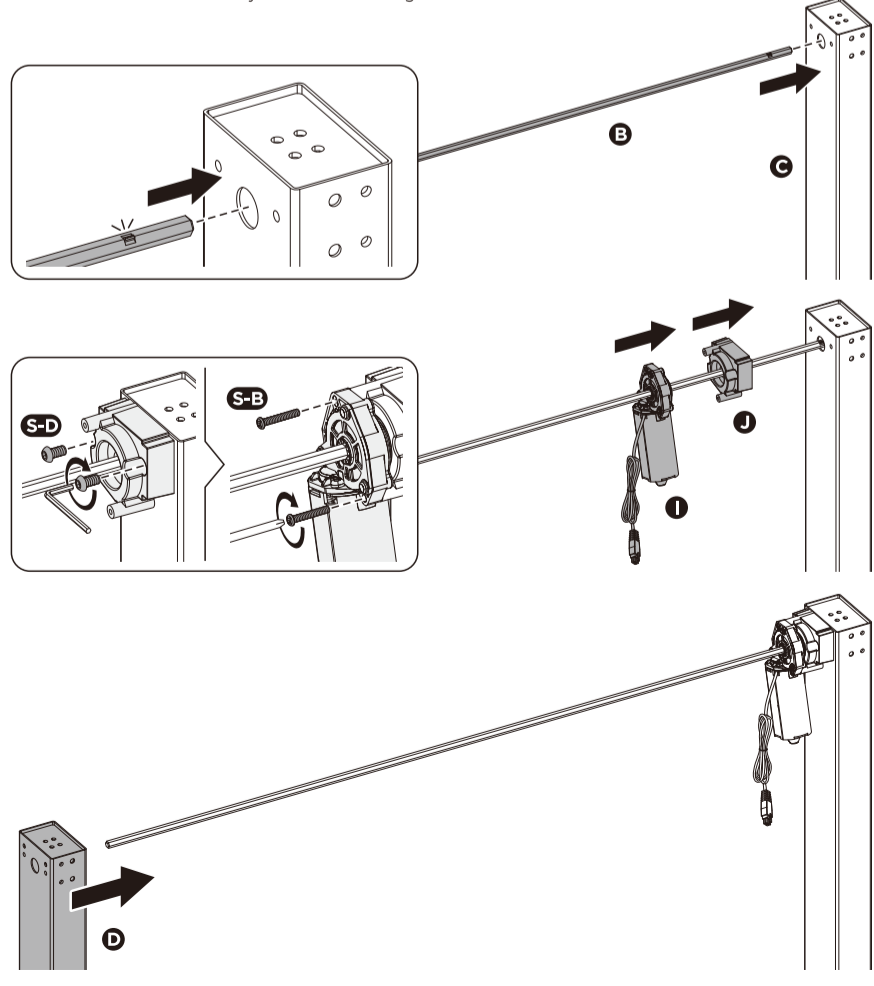
1. Attaching the Feet

- Place the Lifting Column **C / D** on the floor.
- Attach the Foot **F** to the Lifting Column using Screws **S-E** with Allen Wrench **S-F**.
- Repeat the same process to attach the other foot.



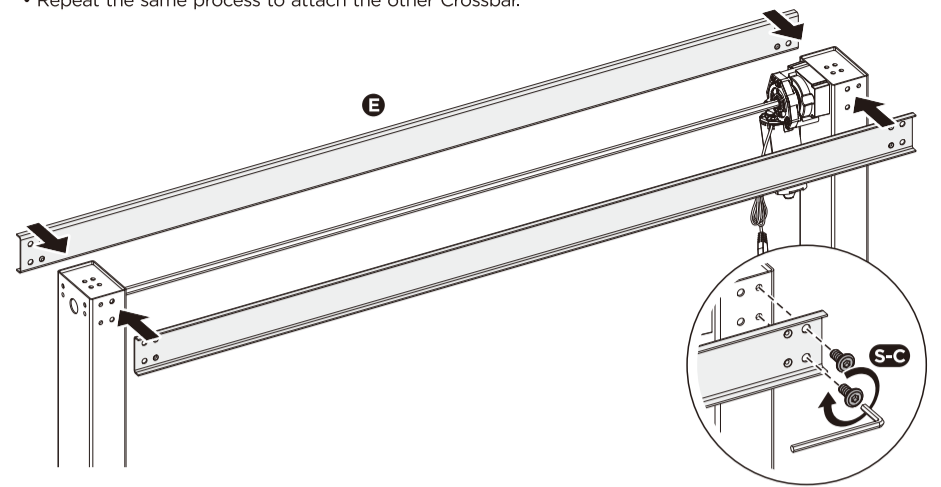
2. Attaching the Sync Rod and Motor

- Insert the end with convex of Sync Rod **B** into the hole on the Lifting Column.
- Thread the Motor Mounting Plate **J** from the other end of Sync Rod and fix it to the Lifting Column using Screws **S-D**. Repeat the same process to fix the Motor **I** to the Motor Mounting Plate using Screws **S-B**.
- Attach the other end of the Sync Rod to the Lifting Column.



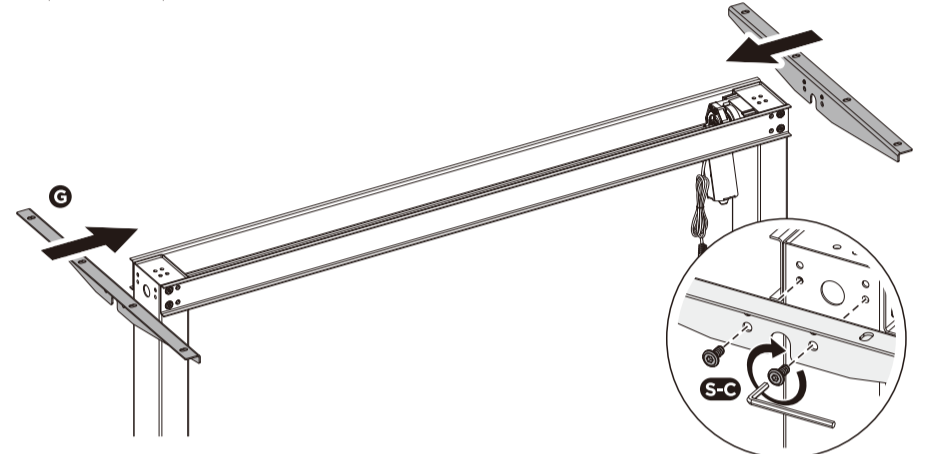
3. Attaching the Crossbar

- Attach the Crossbar Piece **E** to the Lifting Columns **C / D** using Screws **S-C** with Allen Wrench as shown in the illustration.
- Repeat the same process to attach the other Crossbar.



4. Attaching the Side Brackets

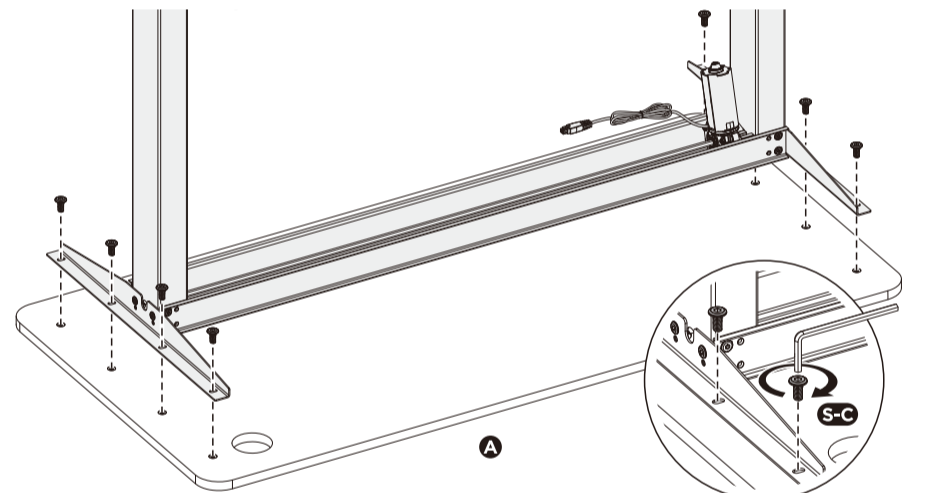
- Attach the Side Bracket **G** to the Lifting Column using Screws **S-C** with Allen Wrench.
- Repeat the same process to attach the other side bracket.



5. Drilling to the Desktop

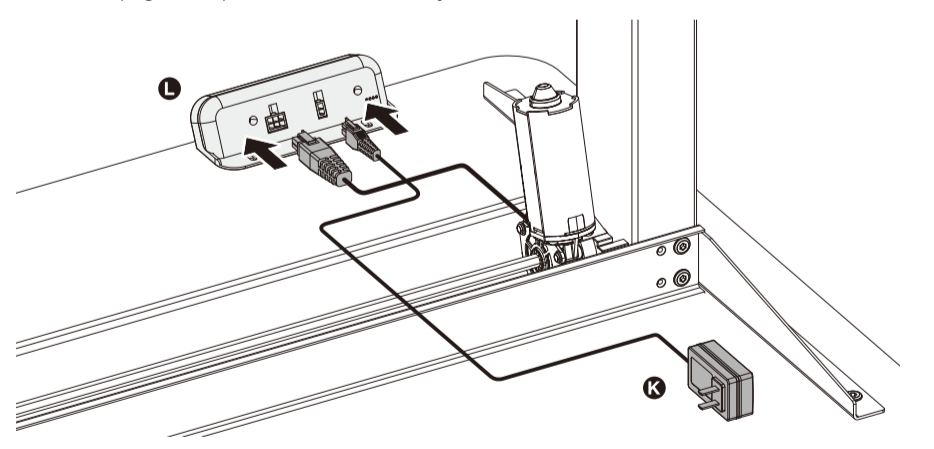
- Attach the assembled desk frame to the desktop through the mounting holes found on the Side Brackets as shown in the illustration using Screws **S-C**.

Note: Please make sure the desktop keep facing down while installation.



6. Connecting Cords

- Connect the Controller **L** with the AC Adapter **K** and Motor.
- Note:** Do not plug into the power before the desk is fully assembled.



7. Attaching the Controller

- Attach the Controller to the desktop using Screws **S-A**.

