



# LogiLink®

## Retractable 3-Way Table Socket

Art. No.: LPS235A



## The Best Tabletop Power Solution

An elegant and reliable electrical outlet with child-friendly pull up/down mechanism. Easily set up in your home office, kitchen counter, office desks and meeting room. You can fully retract it underneath to keep the tabletop clean and organized.

Hidden  
Design

Space  
Saving

Child  
Friendly

Easy  
to  
Install



RoHS  
compliant



\*The specifications and pictures are subject to change without prior notice.  
\*All trade names referenced are the registered trademarks of their respective owners.

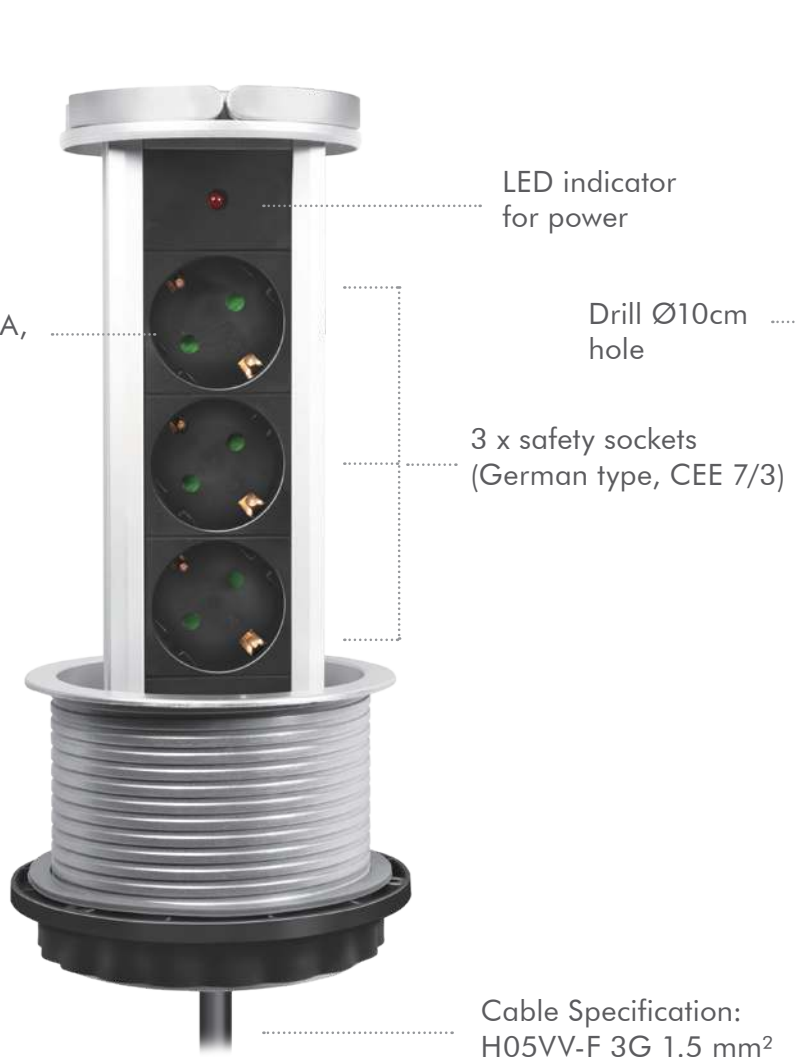


LPS235A



4 052792 061888

Made in China



-  Indoor Use
-  with Safety Shutter
-  Cable Length 1.8m



Easily pull the power socket up with handle



\*The specifications and pictures are subject to change without prior notice.  
 \*All trade names referenced are the registered trademarks of their respective owners.



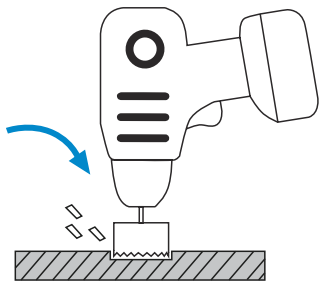
# LogiLink®

## Retractable 3-Way Table Socket

Art. No.: LPS235A

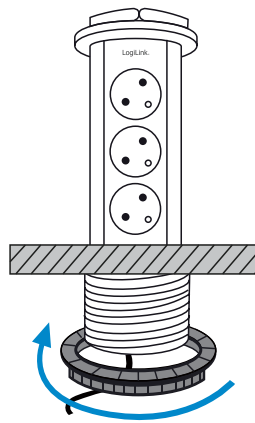
### How to Install:

①



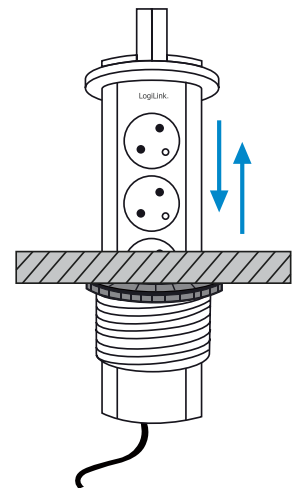
Drill a Ø10 cm hole all the way through table.

②



Remove the detachable locking ring from the socket, and put the socket into the hole.

③



Tighten the detachable locking ring clockwise from the bottom of the socket.

Max.  
3500W

250V  
16A

Cable  
Length  
1.8m

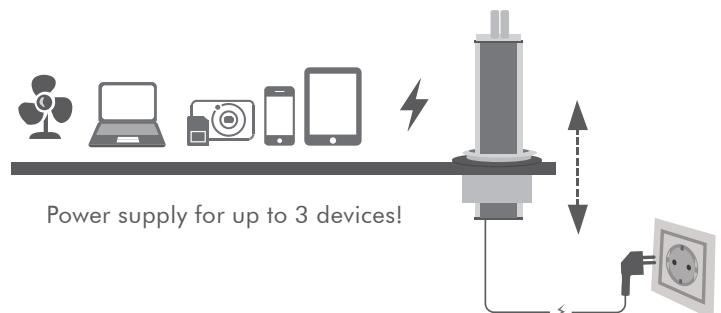


### Package Contents:

- » 1x Retractable 3-way Table Socket
- » 1x User Manual

### Package Information:

- » Packing Dimension: mm
- » Packing Weight: kg
- » Carton Dimension: mm
- » Carton Q'ty: pcs
- » Carton Weight: kg



Power supply for up to 3 devices!



RoHS  
compliant



\*Do not plug in a row.

\*Do not install around sink, it can retract but not waterproof.

\*The specifications and pictures are subject to change without prior notice.

\*All trade names referenced are the registered trademarks of their respective owners.



LPS235A



4 052792 061888

Made in China