

# GOEBEL

## M 12

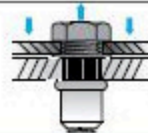
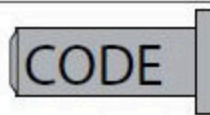
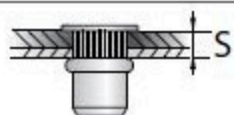
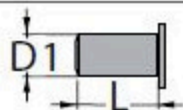
D1 = 15,9 mm

D2 = 17,5 mm

L1 = 9,0 / 11,5 mm

k = 1,0 mm

 16,0 mm



15,9 x 23,5 mm

0,8 - 3,5 mm

75512 12000

54000 N

15,9 x 26,0 mm

3,5 - 6,0 mm

75512 12001

82,0 Nm