

C6Amodul / C6Amodul K

AWG 26/1 - 22/1, AWG 26/7 - 22/7

899426

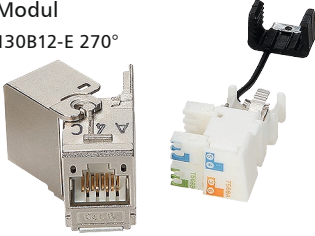
de Montagehinweis für den Installateur

en Mounting note for the installer

fr Notice d'installation pour l'installateur

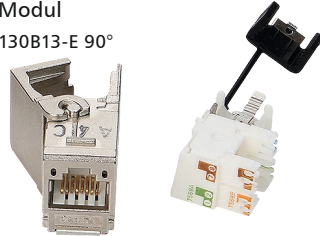
Modul

130B12-E 270°



Modul

130B13-E 90°



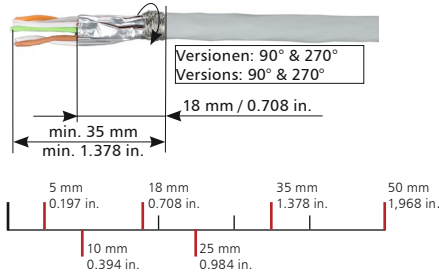
Keystone

130B22-E 270°



Keystone

130B23-E 90°



i HINWEIS / NOTE / NOTICE

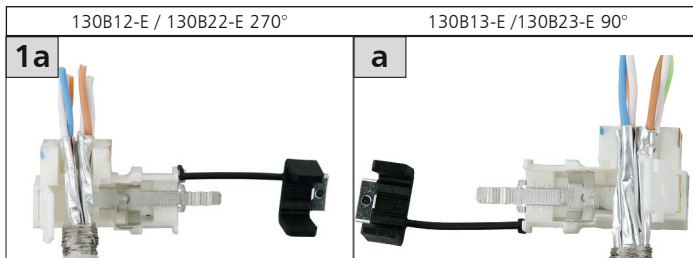
de Kabel AWG 26!
Schirmgeflecht 5 mm über den Kabelmantel aufbringen.

en Cable AWG 26!
Wrap the braided shield 5 mm over the cable sheath.

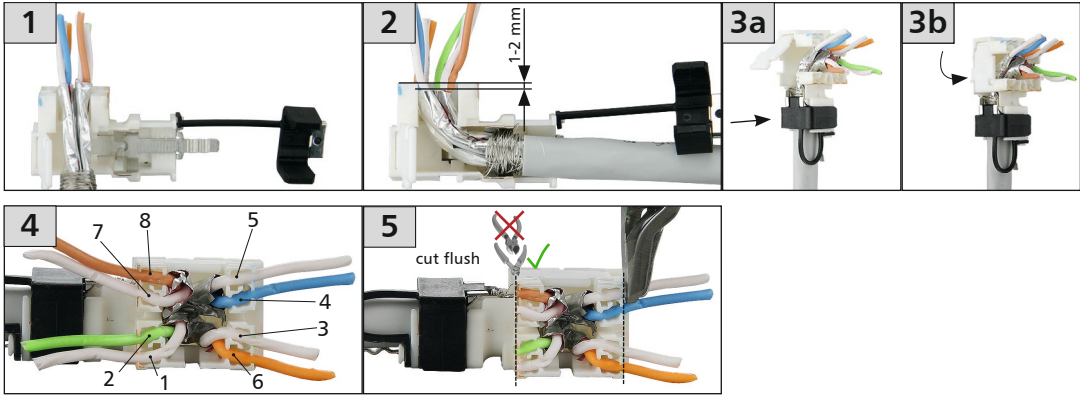
fr Câble AWG 26 !
Enrouler le blindage tressé 5 mm autour du gainage.

Anschlussbelegung / PIN assignments Affectation des brins

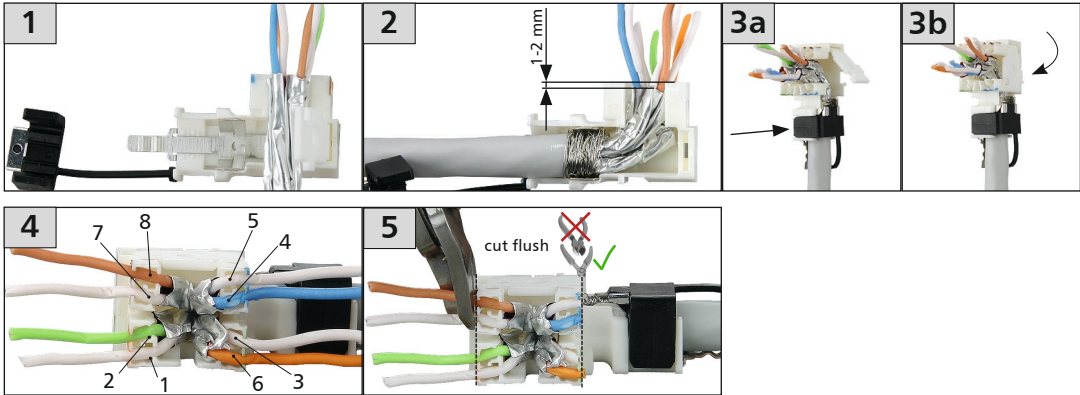
PIN Nr. / No.	T568A	T568B
1	WH-GN	WH-OG
2	GN	OG
3	WH-OG	WH-GN
4	BU	BU
5	WH-BU	WH-BU
6	OG	GN
7	WH-BN	WH-BN
8	BN	BN



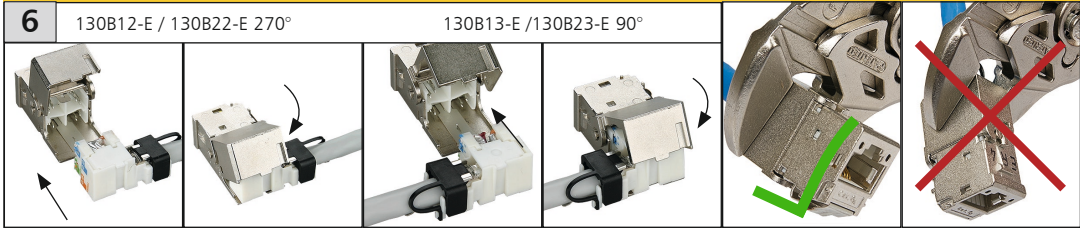
- de** Kabelmontage Modul/Keystone 270°
- en** Cable Termination Module/Keystone 270°
- fr** Installation d'un câble Module/Keystone 270°



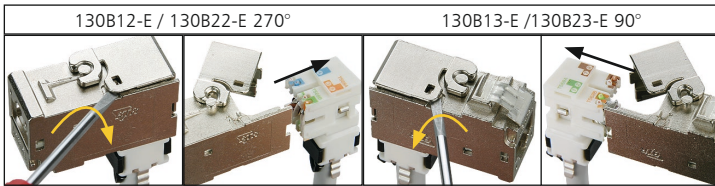
- de** Kabelmontage Modul/Keystone 90°
- en** Cable Termination Module/Keystone 90°
- fr** Installation d'un câble Module/Keystone 90°



! Nicht schräg einstecken! - Do not plug diagonally! - Ne pas insérer en diagonal !



Demontage / Disassembly / Démontage



Potentialausgleich
Potential equalisation
Compensation de potentiel



Optionaler Potentialausgleich mit 2,8 mm Flachstecker
Optional potential equalisation with 2.8 mm flat plug
Compensation de potentiel optionnelle par languette à 2,8 mm