



D Montageanleitung

F Notice de montage

NL Handleiding voor de montage

CZ Monzážní návod

HU Szerelési útmutató

TR Montaj talimatı

GB Assembly instructions

I Istruzione di montaggio

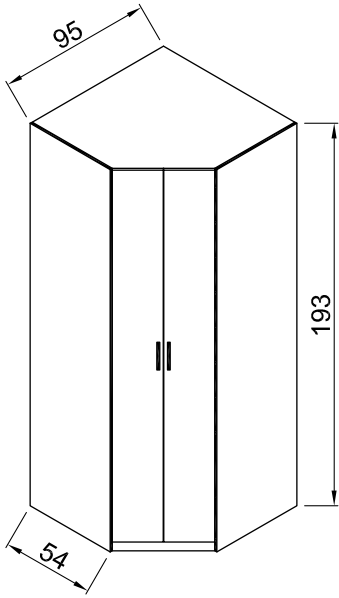
PL Instrukcja montaży

SK Návod na montáž

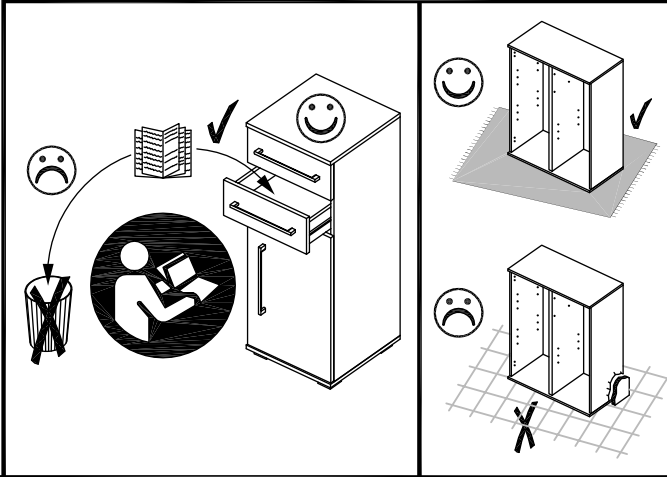
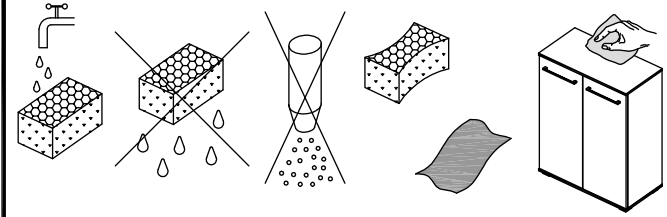
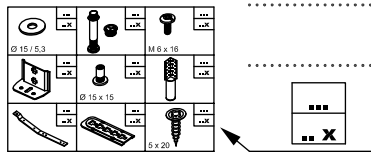
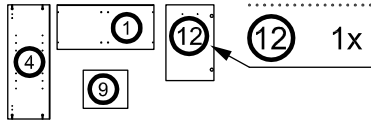
RO Instrucțiuni de montaj

RU ИНСТРУКЦИЯ ПО МОНТАЖУ

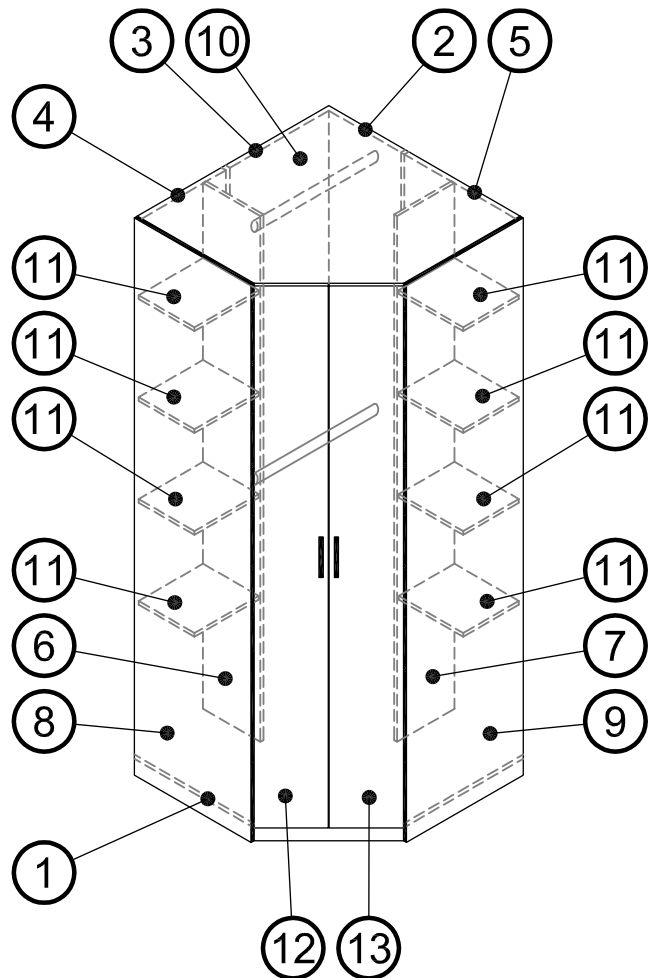
Art. Nr. 1041

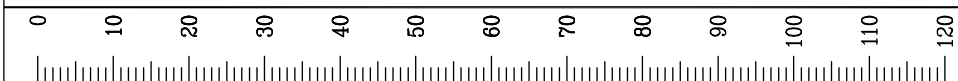
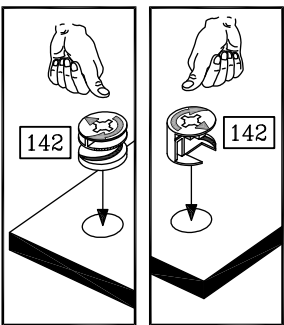
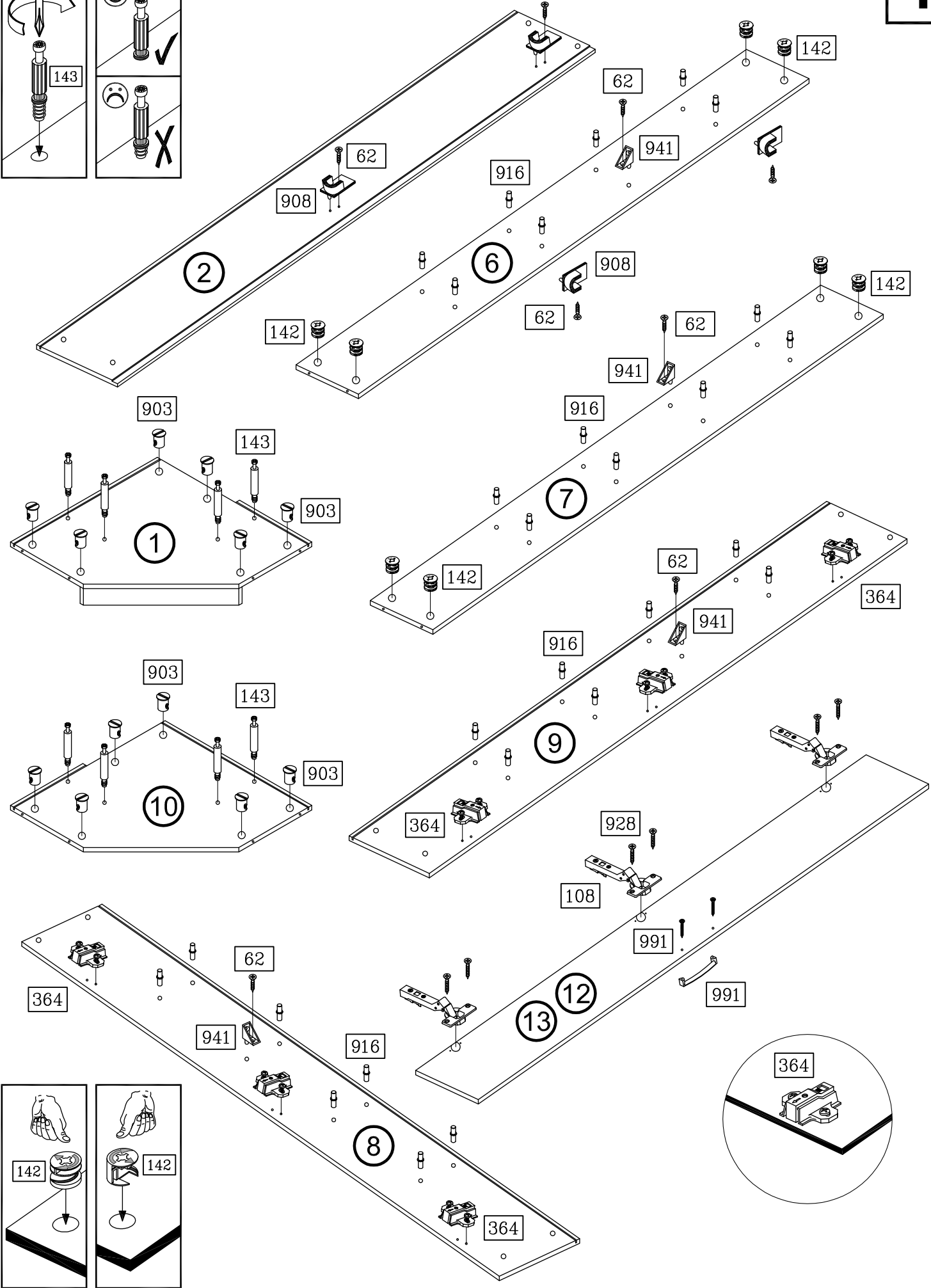
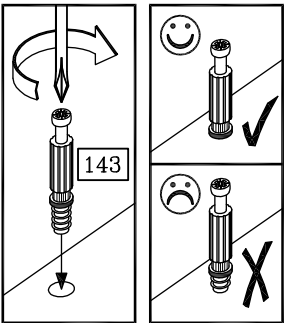


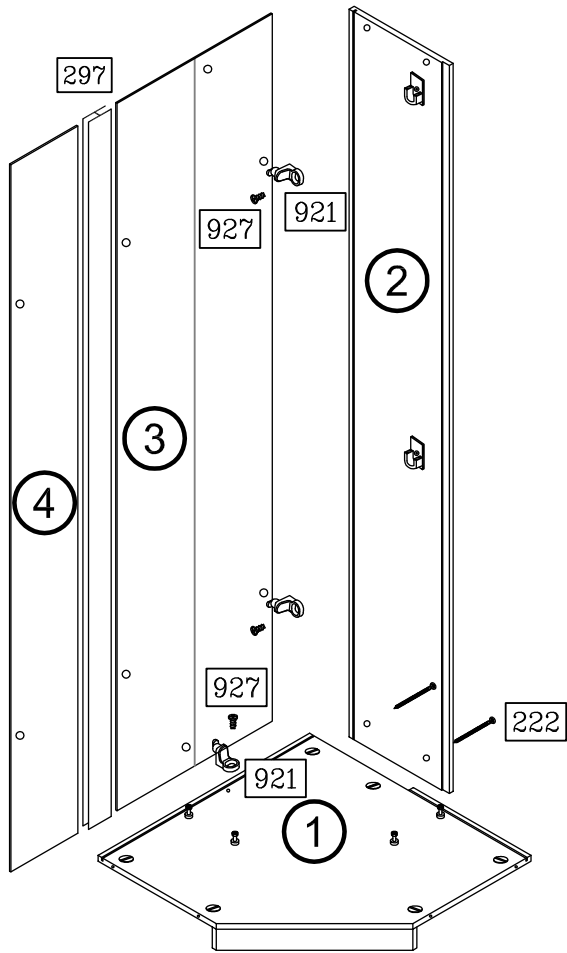
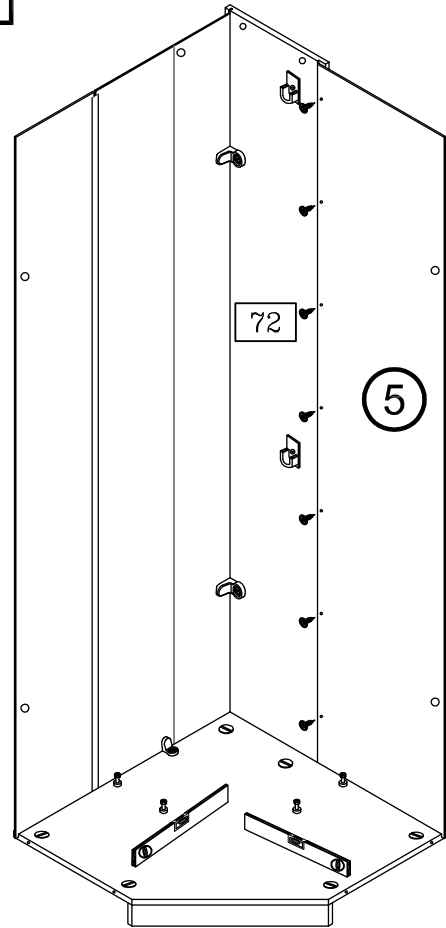
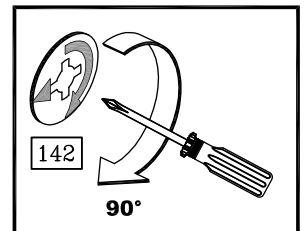
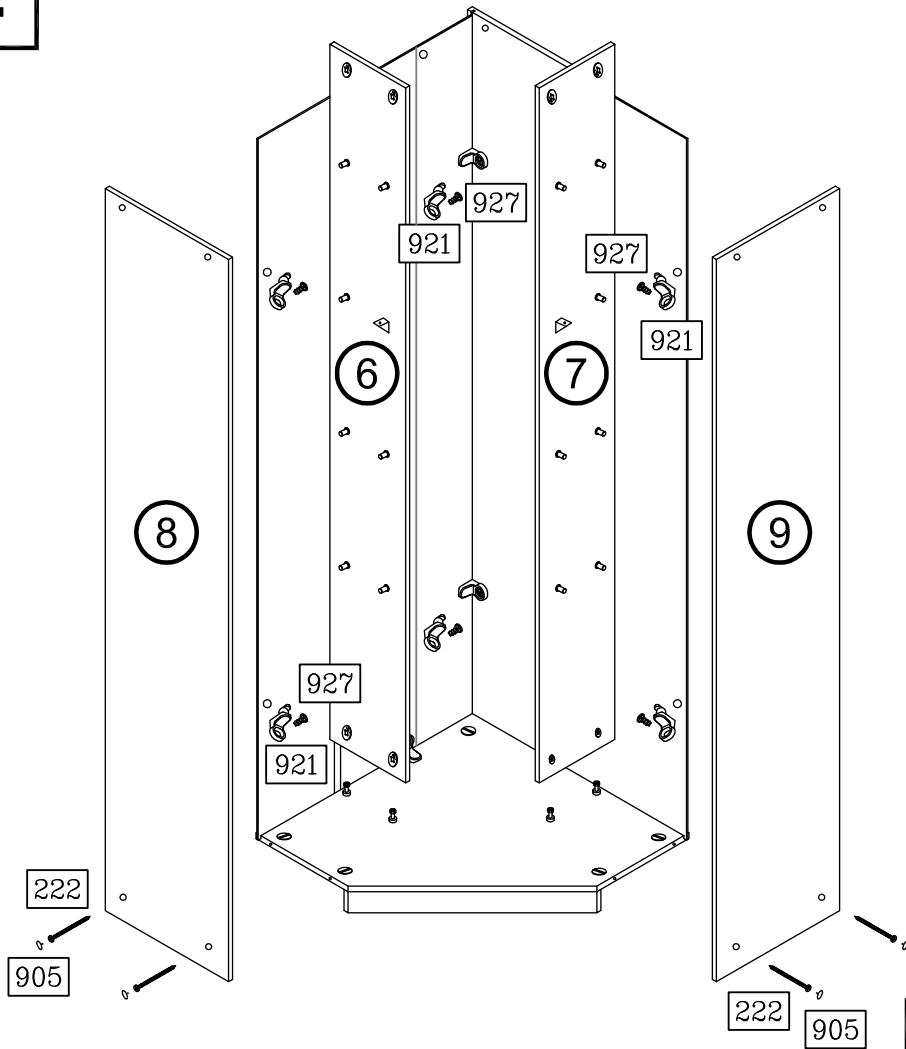
Art. Nr. 1041



 3,5 x 13 62 12x	 4x13 72 7x	 108 6x
 Ø 15 x 11,5 142 8x	 6 x 44 143 8x	 4,5 x 55 222 12x
 563 mm 295 2x	 1834 mm 297 1x	 364 6x
 903 12x	 Ø 12 / 2,5 905 12x	 908 4x
 916 28x	 921 10x	 6,3 x 11 927 10x
 4 x 15 928 12x	 941 4x	 991 2x



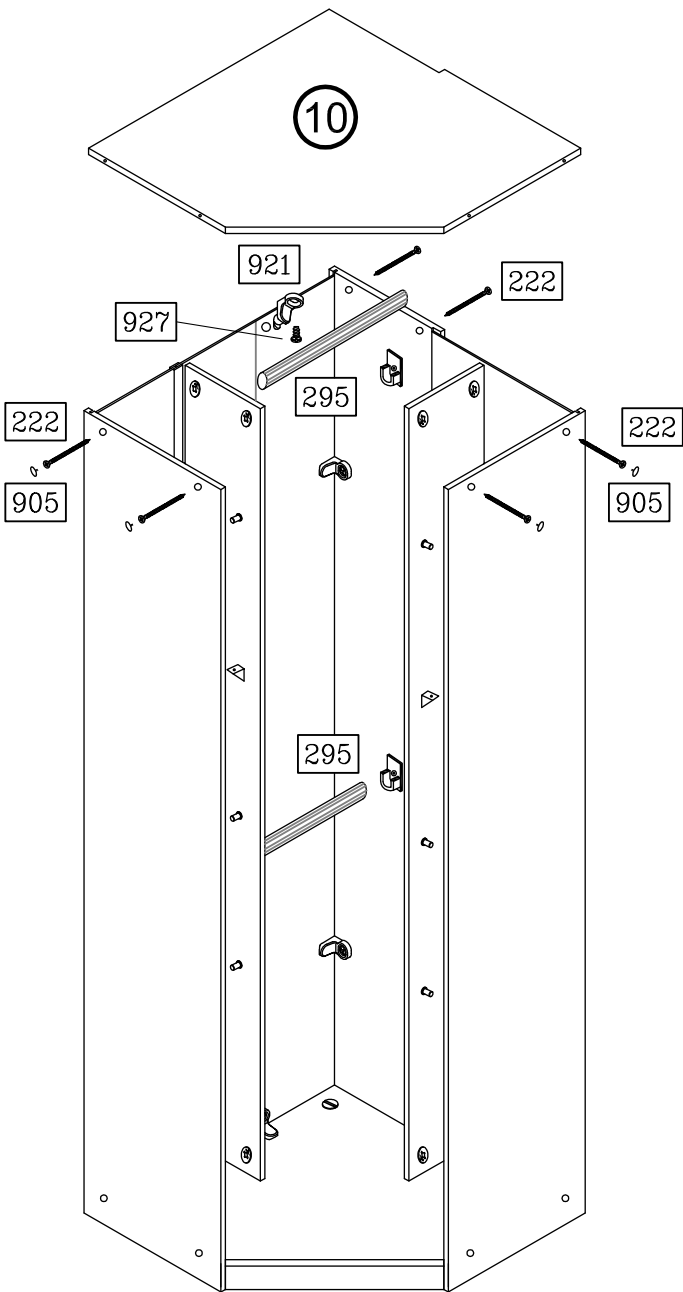


2**3****4**

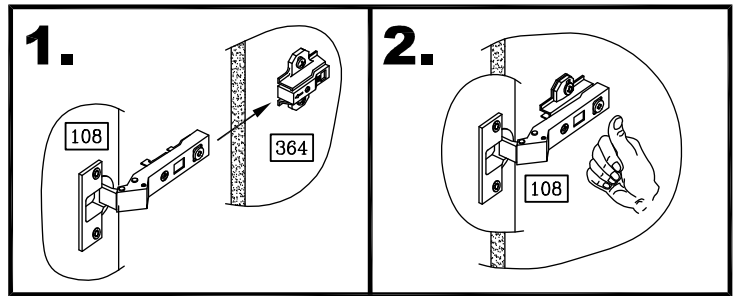
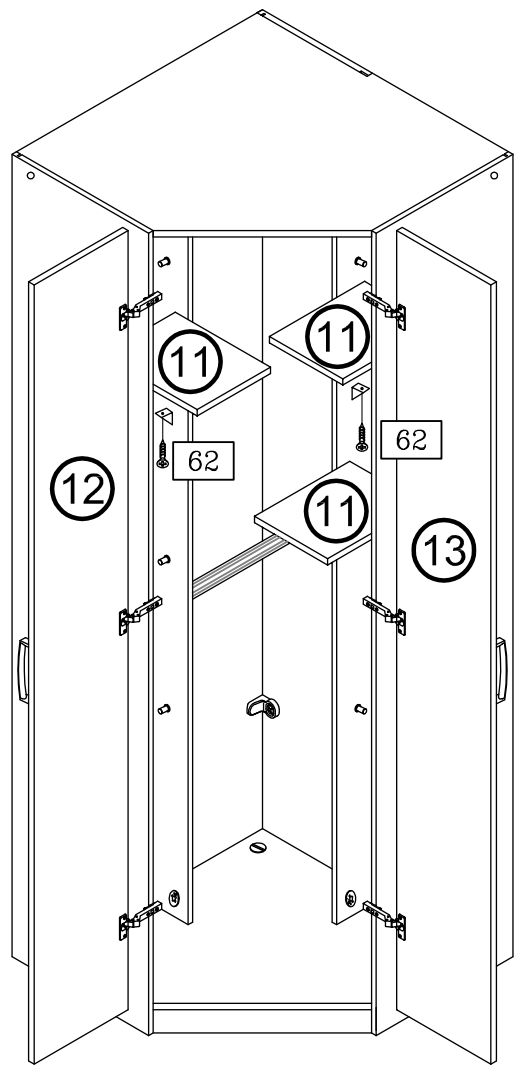
1041-3

3/4

5



6



7

