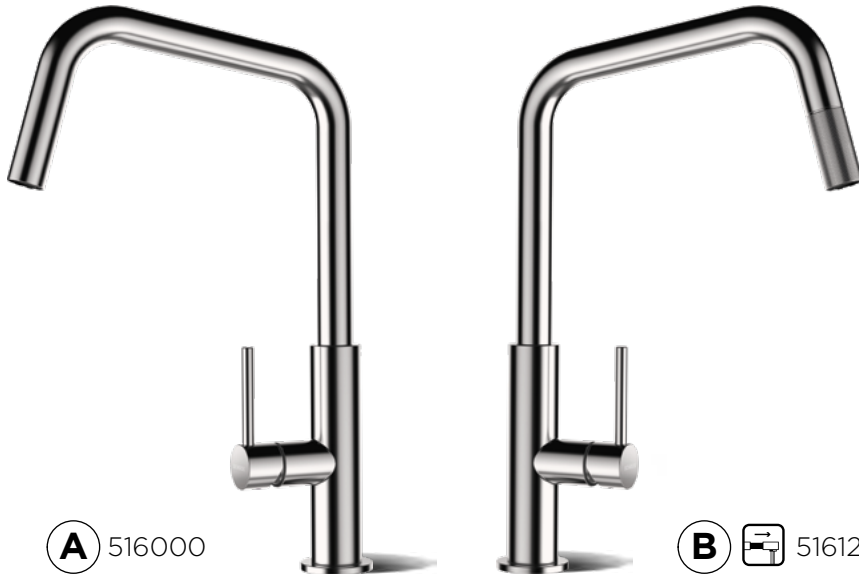


# SCHOCK



**A** 516000

**B** 516120

## TANOS



[www.schock.de/easy-tanos](http://www.schock.de/easy-tanos)



**i** **PRODUKTMERKMALE**  
PRODUCT SPECIFICATIONS

**A** 516000 **B** 516120



500  
19 5/8"



500  
19 5/8"

**Anschluss Schlauchlänge**  
Length of supply hoses



3/8"



3/8"

**Gewindegröße Anschluss Schlauch**  
Thread size of supply hose



360°



360°

**Schwenkbereich**  
Swivel range

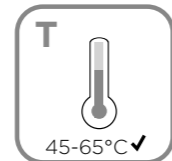
**A** 516000



3 bar ✓



0,5 ✓ max 10



45-65°C ✓



°C ✓ max 80



3 bar 10,2l/min ✓

l/min →

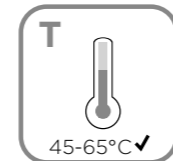
**B** 516120



3 bar ✓



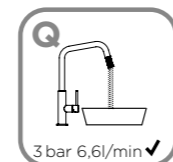
0,5 ✓ max 10



45-65°C ✓



°C ✓ max 80



3 bar 6,6l/min ✓

l/min →

**Wasserdruck**  
Water pressure

**Temperatur**  
Temperature

**Wasserdurchlaufmenge**  
Water flow rate

**SCHOCK**

**! A** **SICHERHEITSHINWEISE**  
SAFETY NOTES

- DEU** DIE GEWÄHRLEISTUNG VERFÄLLT BEI LAIENMONTAGE. SCHOCK EMPFIEHLT DIE VERWENDUNG DES GROBPARTIKELFILTERS SF-100 (629883). KEINEN CHLORREINIGER VERWENDEN.
- ENG** THE WARRANTY IS VOIDED BY NON-PROFESSIONAL INSTALLATION. SCHOCK RECOMMENDS THE USE OF THE SF-100 (629883) COARSE PARTICLE FILTER. DO NOT USE CHLORINE-BASED CLEANING AGENTS.
- ES** LA GARANTÍA CADUCA CUANDO EL MONTAJE NO ES REALIZADO POR PERSONAL ESPECIALIZADO. SCHOCK RECOMIENDA LA INSTALACIÓN DEL FILTRO CONTRA PARTÍCULAS GRUESAS SF-100 (629883). SE ADVIERTE NO UTILIZAR DETERGENTES QUE CONTENGAN CLORO.
- TR** YETKILI KIŞILERCE YAPILMAYAN MONTAJLARDA GARANTI GEÇERSİZ SAYILACAKTIR. SCHOCK SF-100 (629883) KALIN PARÇACIK FİLTRESİNİ KULLANMANIZI ÖNERİR. ASLA KLORLU TEMİZLEYİCİLER KULLANMAYINIZ.
- POL** GWARANCJA TRACI WAŻNOŚĆ W PRZYPADKU NIEWŁAŚCIWEGO MONTAŻU. SCHOCK ZALECA UŻYCIE ZAWORU KĄTOWEGO Z FILTREM SF-100 (629883). NIE STOSOWAĆ ŚRODKÓW NA BAZIE CHLORU.
- RUS** ГАРАНТИЯ РАСПРОСТРАНЯЕТСЯ НА СМЕСИТЕЛИ УСТАНОВЛЕННЫЕ КВАЛИФИЦИРОВАННЫМ САНТЕХНИКОМ. SCHOCK РЕКОМЕНДУЕТ ИСПОЛЬЗОВАТЬ ФИЛЬТР ГРУБОЙ ОЧИСТКИ SF-100 (629883). НЕ ИСПОЛЬЗОВАТЬ ХЛОРСОДЕРЖАЩИЕ ЧИСТЯЩИЕ СРЕДСТВА.



## WERKZEUGE TOOLS



12 mm  
13 mm  
19 mm



36 mm

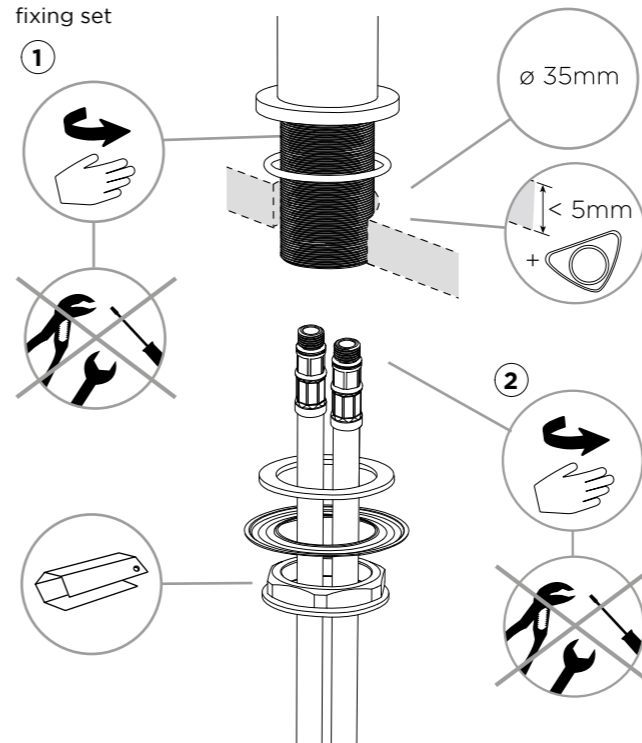


## INSTALLATION INSTALLATION

① A 516000

**Anschlusschläuche eindrehen und handfest anziehen sowie Befestigungsset montieren**

Screw in and hand-tighten connection hoses and install fixing set

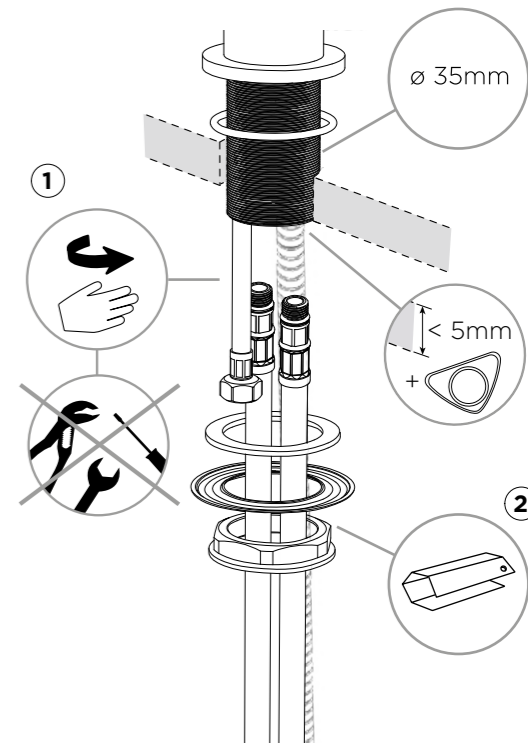


## SCHOCK

① B 516120

**Anschlusschläuche handfest anziehen und Befestigungsset montieren**

Hand-tighten connection hoses and install fixing set

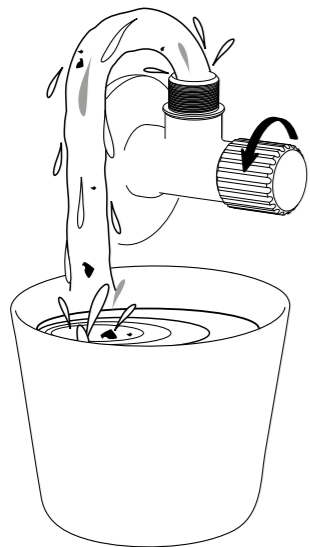




## INSTALLATION INSTALLATION

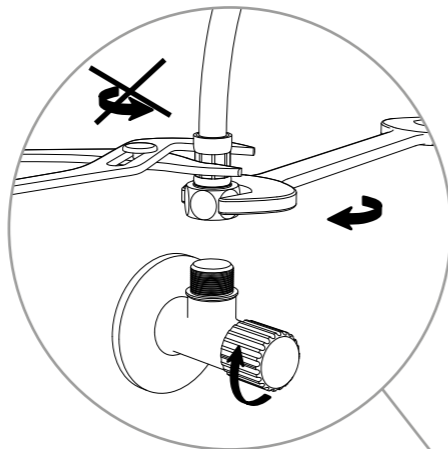
2

**Eckventile vor der Installation gründlich ausspülen**  
Flush piping system before installation of fitting thoroughly



3

**Anschlusschläuche an Eckventile anschrauben**  
Screw supply hoses onto angle valves



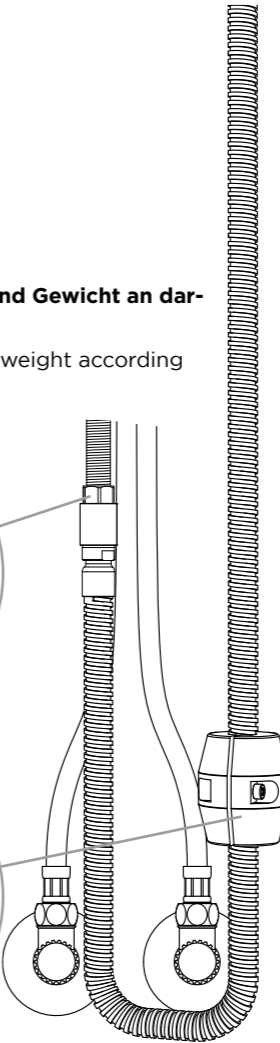
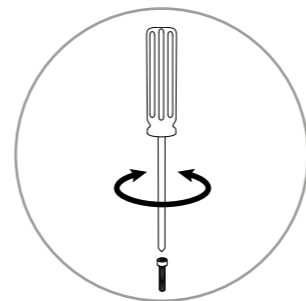
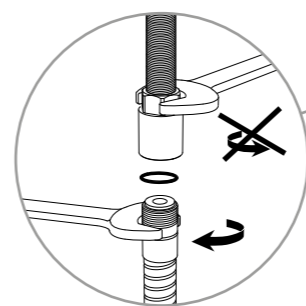
## INSTALLATION INSTALLATION

4

**B 516120**

**Brauseschlauch fest anziehen und Gewicht an dargestellter Position montieren.**

Tighten shower hose and install weight according to the shown position

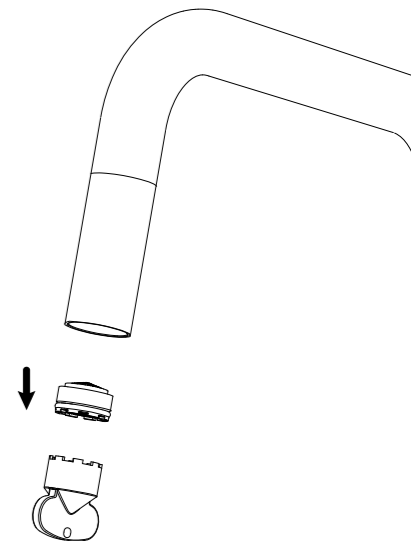
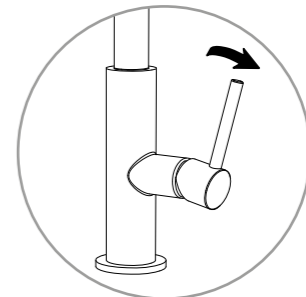


## SCHOCK

5

**Hebel öffnen und Perlator ausbauen um potenzielle Verunreinigungen auszuspülen.**

Open the handle and remove the aerator to flush potential dirt.



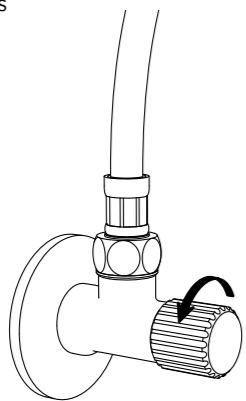


## INSTALLATION INSTALLATION

6

**Eckventile öffnen, Armatur spülen und alle Verbindungen auf Undichtheiten prüfen**

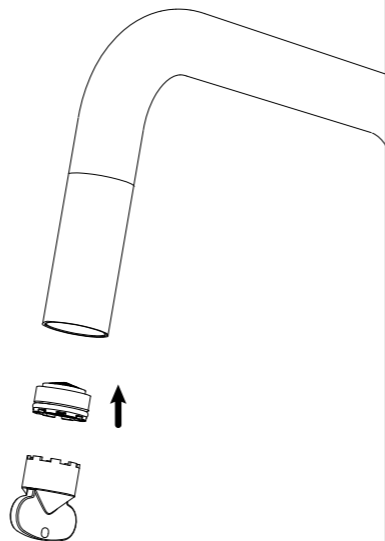
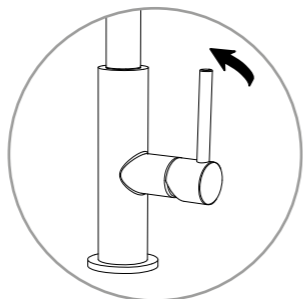
Turn on water supplies, flush the tap and check connections for leaks



7

**Hebel schließen und Perlator wieder einbauen**

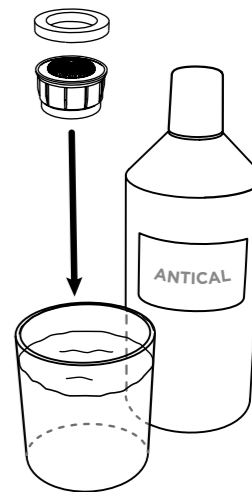
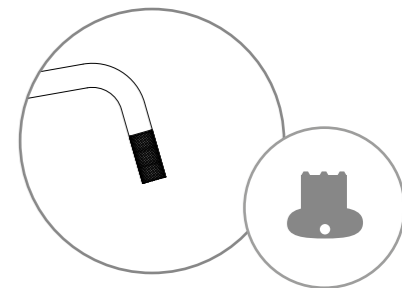
Close the handle and re-install the aerator



## WERKZEUGE TOOLS



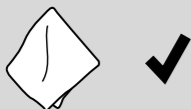
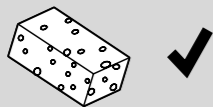
## PERLATORREINIGUNG CLEANING THE AERATOR



60 min

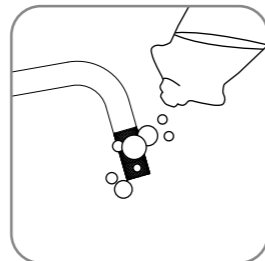


**PFLEGEPRODUKTE**  
CARE PRODUCTS

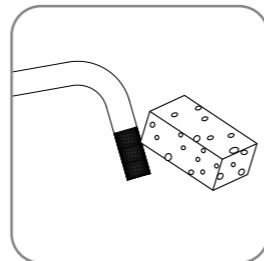


**PFLEGEHINWEISE**  
CARE INSTRUCTIONS

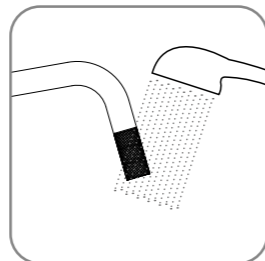
1.



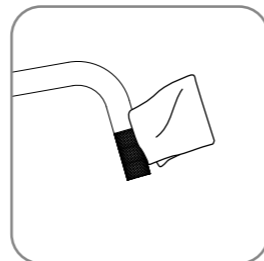
2.



3.



4.



**WERKZEUGE**  
TOOLS



2,5 mm

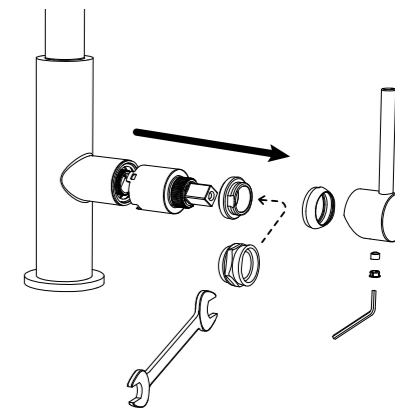


27 mm

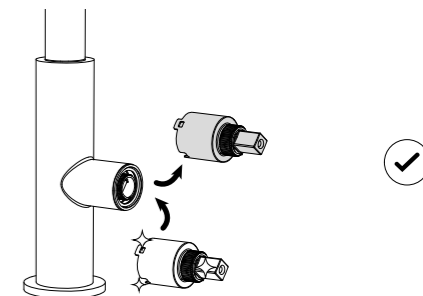


**KARTUSCHENWECHSEL**  
CHANGING THE CARTRIDGE

1



2





## ERSATZTEILE SPARE PARTS

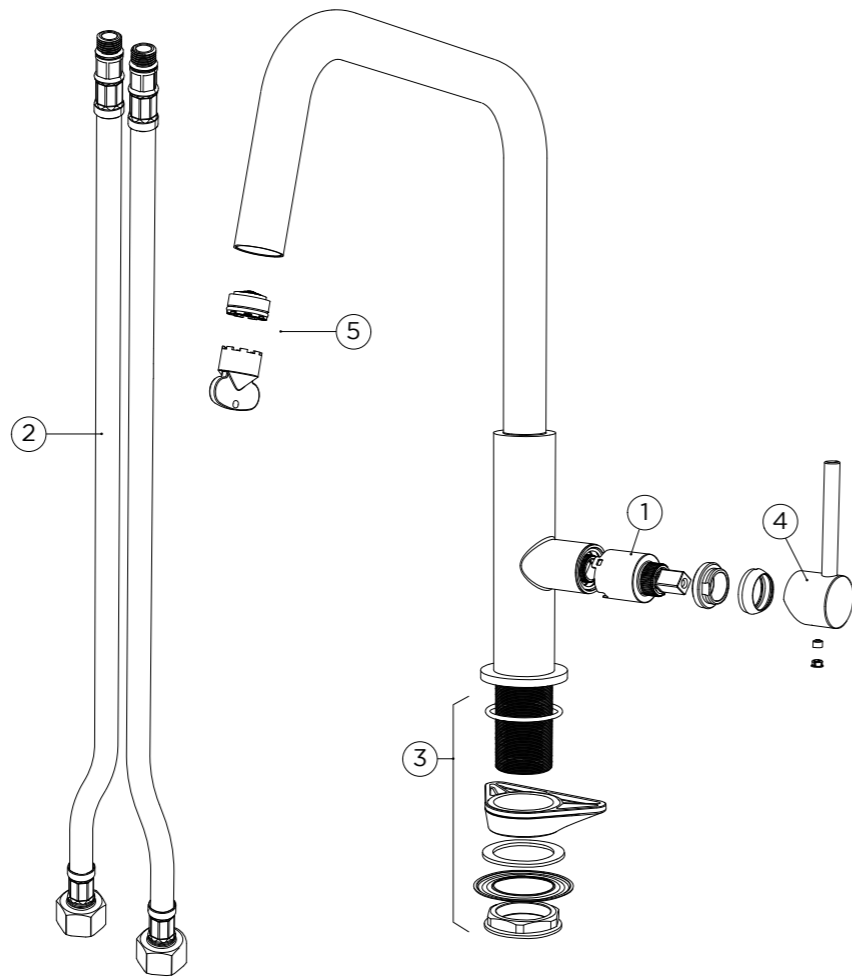
① 628802/1

② 628802/2

③ 628802/3

④ 628802/4

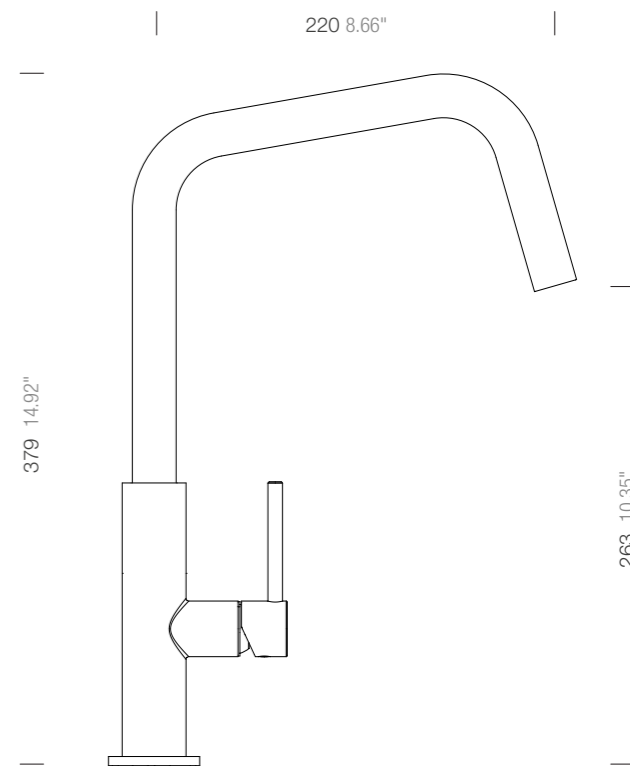
⑤ 628802/5



## MASSE MEASUREMENTS

Ⓐ 516000

## SCHOCK





**ERSATZTEILE**  
SPARE PARTS

① 628802/1

② 628803/2

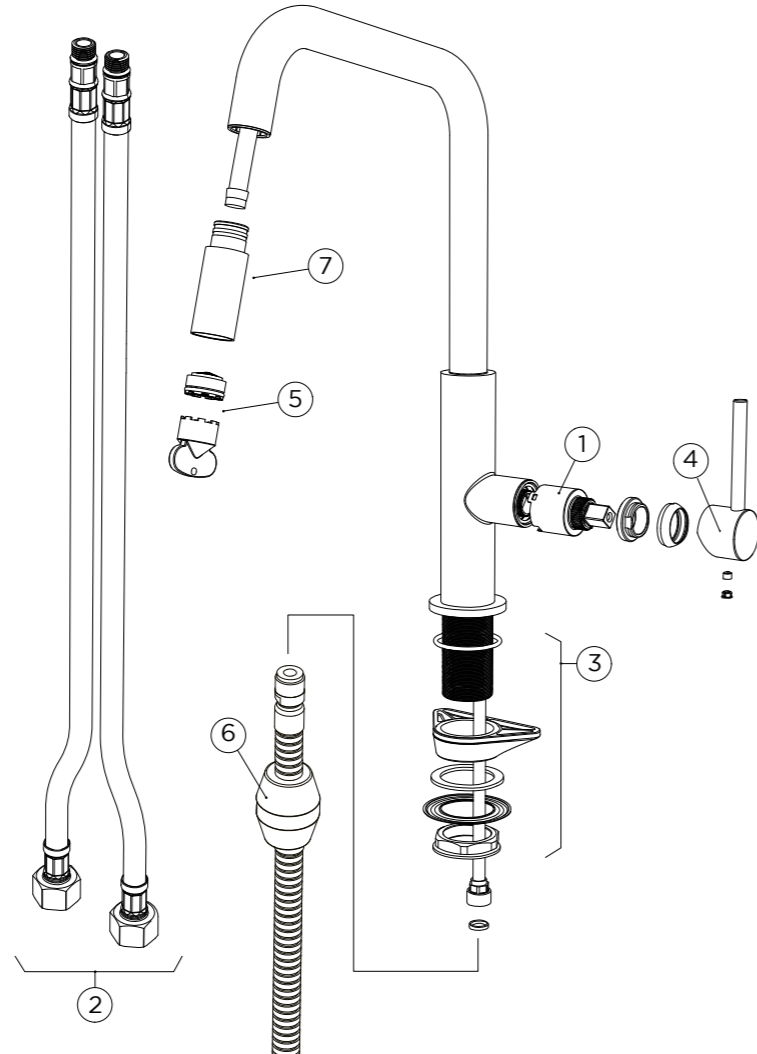
③ 628802/3

④ 628802/4

⑤ 628802/5

⑥ 628802/6

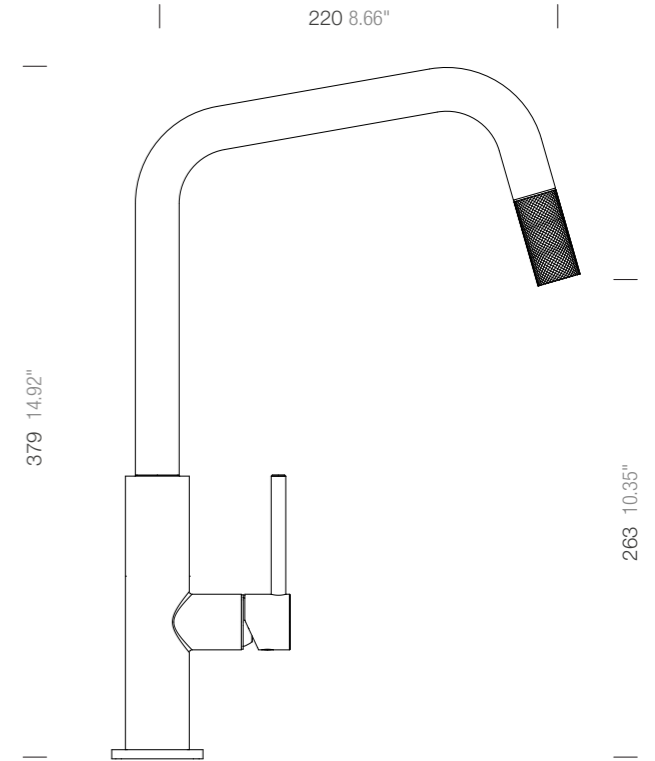
⑦ 628802/7



**MASSE**  
MEASUREMENTS

Ⓑ 516120

**SCHOCK**







[www.schock.de/service](http://www.schock.de/service)



[www.schock.de/shop](http://www.schock.de/shop)

SCHOCK GmbH • Hofbauerstr. 1 • D-94209 Regen  
Telefon: +49-9921-600-0 • Fax: +49-9921-600-253

Email: [info@schock.de](mailto:info@schock.de) • [www.schock.de](http://www.schock.de)