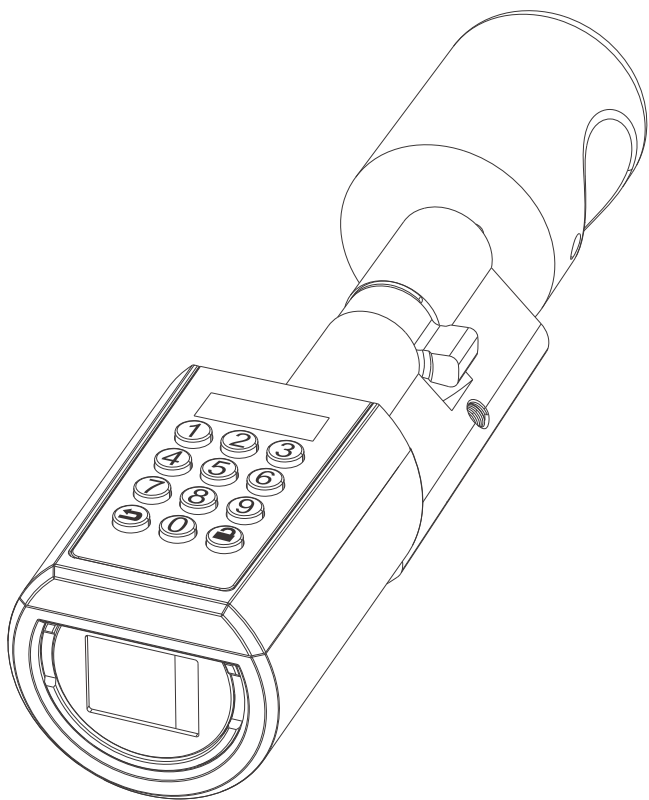


PCB10EBL41 Instruction




 EN - Tips for Use:

1. When you received the lock, please modify the default password "123456" to your own admin password first.

Step: Press any button to wake up the lock first, click "🔒" + 123456 + "🔒" + set your own admin password + "🔒" + confirm your admin password again + "🔒". (Please noted: Need to use the admin password to enter the setup menu, so please keep it in your mind.)

2. Before receiving the correct unlock command, the handle of smart lock is able to rotate 360 which is normal

 DE - Tipps für die Verwendung:

1. Wenn Sie das Schloss erhalten haben, ändern Sie bitte zunächst das Standardpasswort "123456" in Ihr eigenes Admin-Passwort.

Schritt: Drücken Sie eine beliebige Taste, um das Schloss zuerst aufzuwecken, klicken Sie auf "🔒" + 123456 + "🔒" + Ihr eigenes Admin-Passwort festlegen + "🔒" + Bestätigen Sie Ihr Admin-Passwort erneut + "🔒"

(Bitte beachten: Sie müssen das Admin-Passwort verwenden, um in das Einrichtungsmenü zu gelangen, also merken Sie es sich bitte).

2. Bevor der richtige Entriegelungsbefehl empfangen wird, kann der Griff des elektronisches türschloss um 360° gedreht werden, was normal ist.

 IT - Consigli per l'uso:

1. Una volta ricevuto il lucchetto, modificare la password predefinita "123456" con la propria password di amministrazione.

Passo: Premere un pulsante qualsiasi per risvegliare la serratura, fare clic su "🔒" + 123456 + "🔒" + impostare la propria password di amministrazione + " " + confermare nuovamente la password di amministrazione + "🔒".

(Si prega di notare che: Per accedere al menu di configurazione è necessario utilizzare la password di amministrazione, quindi è bene tenerla a mente).

2. Prima di ricevere il comando di sblocco corretto, la maniglia dello serratura smart è in grado di ruotare di 360°, il che è normale.

 FR-Conseils d'utilisation :

1. Lorsque vous recevez la serrure, veuillez d'abord modifier le mot de passe par défaut "123456" par votre propre mot de passe administrateur.

Marche à suivre : Appuyez sur n'importe quel bouton pour réveiller la serrure, cliquez sur "🔒" + 123456 + "🔒" + définissez votre propre mot de passe administrateur + "🔒" + confirmez à nouveau votre mot de passe administrateur + " " .

(A noter : Il est nécessaire d'utiliser le mot de passe administrateur pour entrer dans le menu de configuration, veuillez donc le garder à l'esprit).

2. Avant de recevoir la commande de déverrouillage correcte, la poignée de la serrure connectée peut tourner de 360°, ce qui est normal.

 ES-Consejos de uso:

1. Cuando reciba el candado, modifique primero la contraseña predeterminada "123456" por su propia contraseña de administrador.

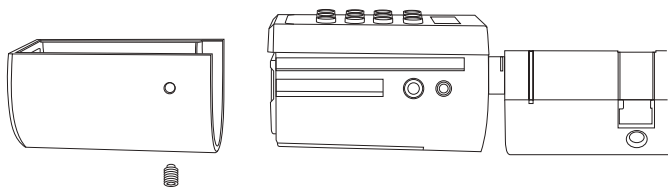
Paso: Pulse cualquier botón para despertar primero la cerradura, haz clic en " " + 123456 + "🔒" + establece tu propia contraseña de administrador + "🔒" + confirma de nuevo tu contraseña de administrador + "🔒".

(Tenga en cuenta: Es necesario utilizar la contraseña de administrador para entrar en el menú de configuración, así que por favor téngalo en cuenta).

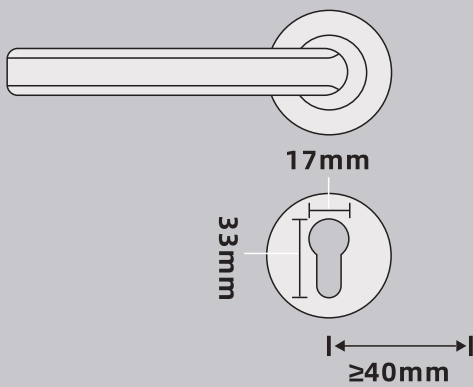
2. Antes de recibir la orden de desbloqueo correcta, la manilla de la cerradura inteligente puede girar 360°, lo cual es normal.

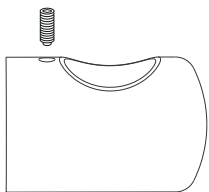
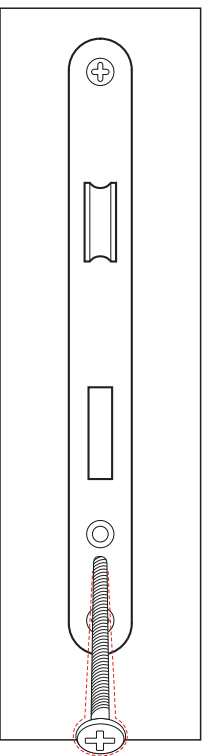
Catalogue

- Applicable size01
- Product components03
- 1.Passcode: Flow chart04
- 2.RFID card:Flow char
- 3.Other settings: Flow chart05
- Accessories list (TOOL BOX)06
- Install battery
- Adjust the length of the cylinder07
- Installation pictures
- Uresetting diagram
- Unlock and lock08
- FAQ
- Bluetooth activation and login instructions09
- Select"Android/iOS"to download
- Log in to the app
- Bind the device10
- Specifications11
- Operating instruction



Applicable size

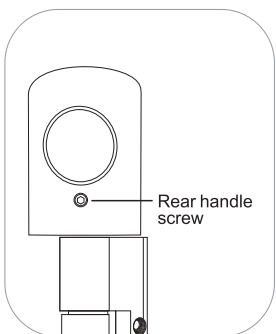
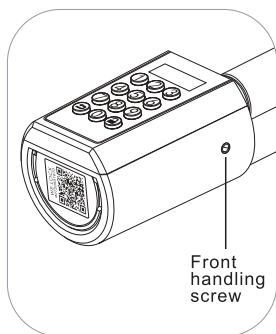
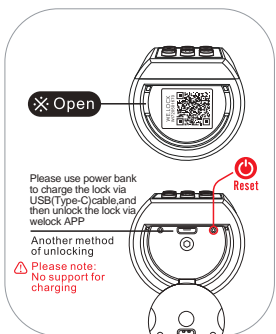
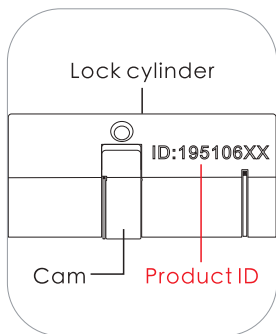
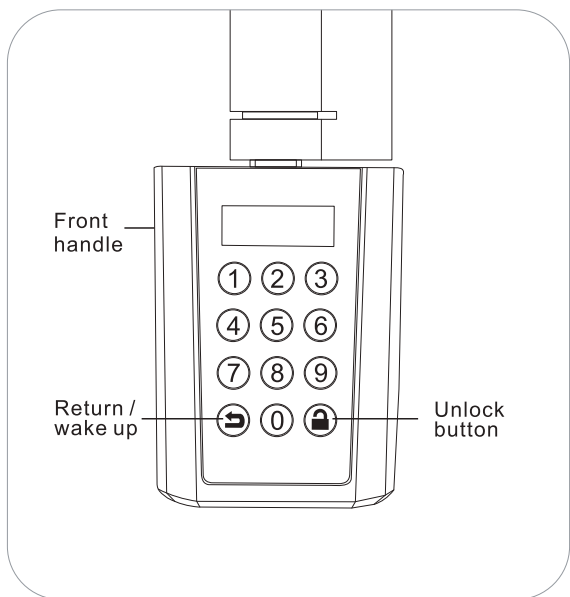




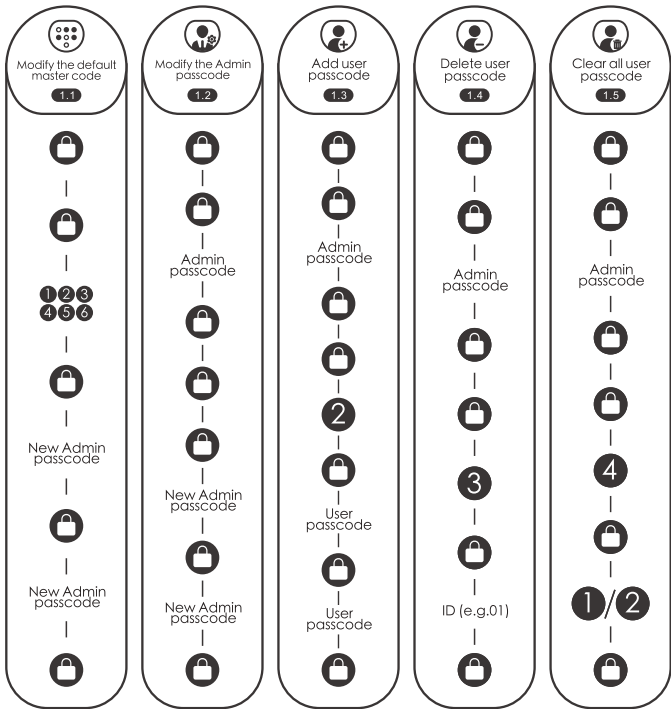
50-100mm



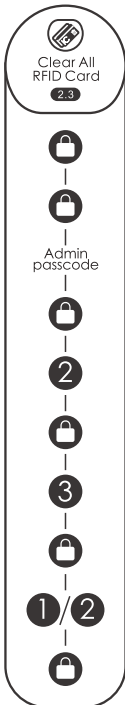
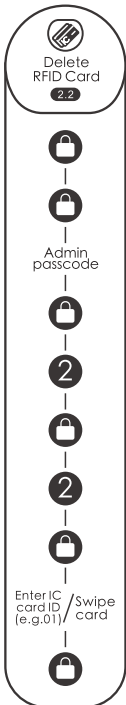
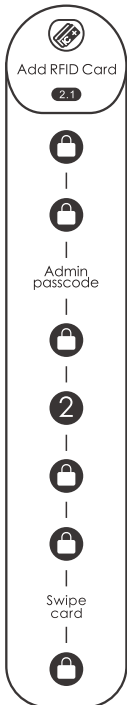
Product Components



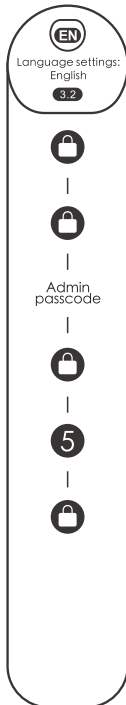
1.Passcode: flow chart



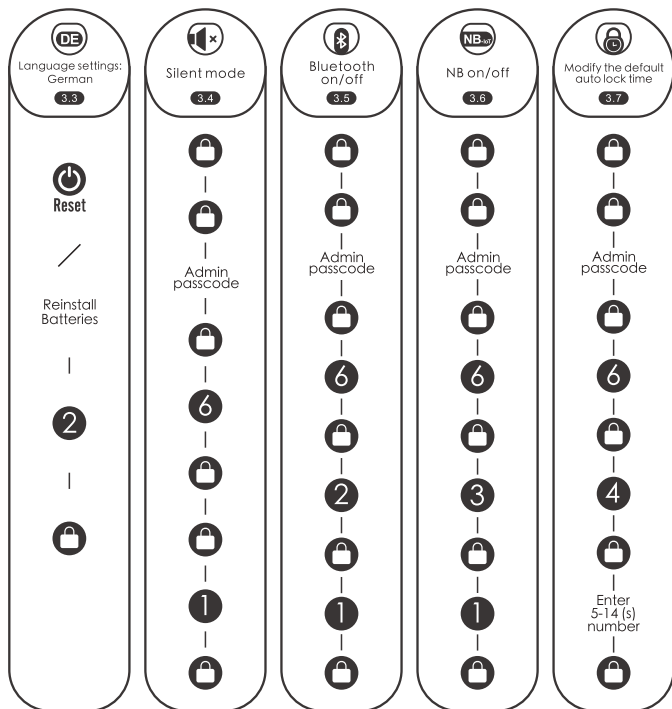
2.RFID card: Flow char



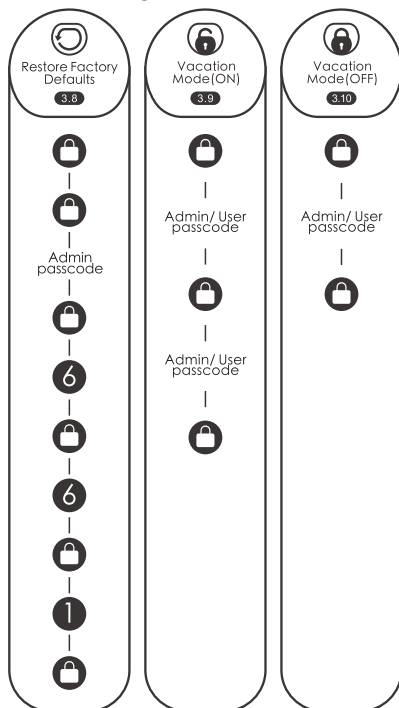
3.Other settings: Flow chart



3.Other settings: Flow chart



3.Other settings: Flow chart



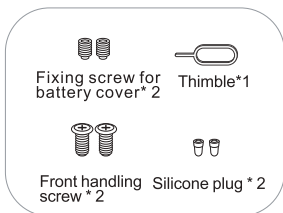
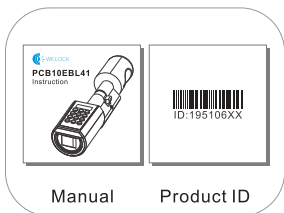
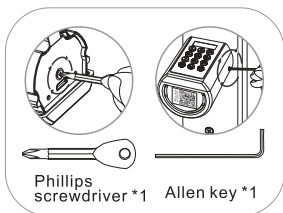
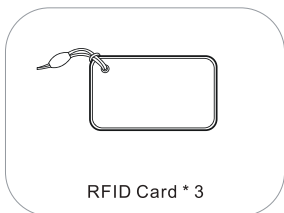
Scan the QR code on the lock

Downloadable Instructions
 &
 Watch Videos

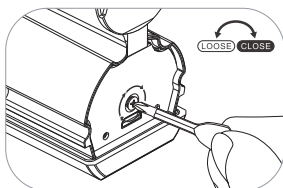
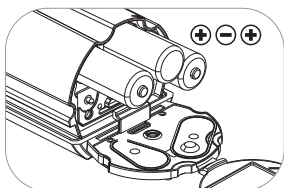
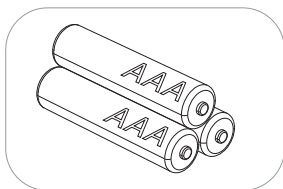
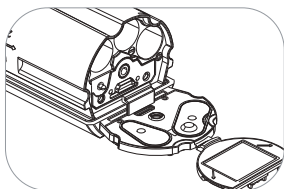
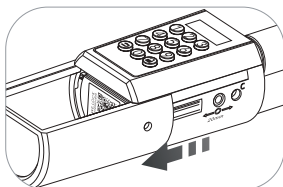
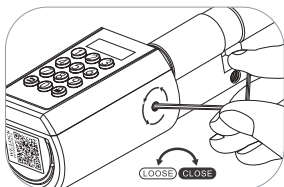
A smart way to open your door.WE.LOCK
www.WELOCK.com

Accessories list (TOOL BOX)

If there is a lack of accessories, please contact customer service in time.



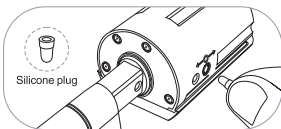
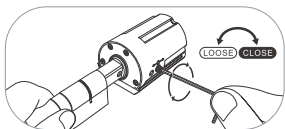
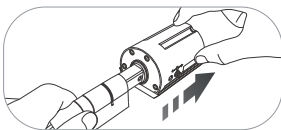
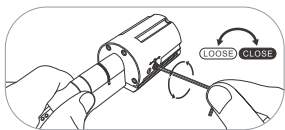
Install battery



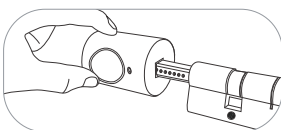
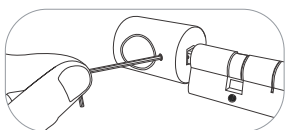
Adjust the length of the cylinder

Depending on the required cylinder length you can adjust the interior and exterior length by loosening the screw with the screwdriver and then pulling out the handle upon need.

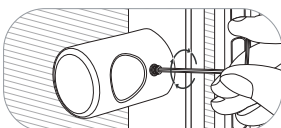
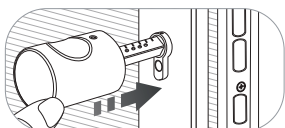
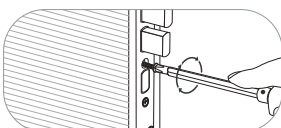
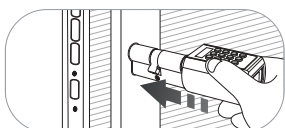
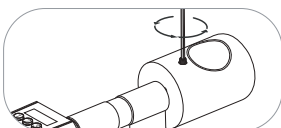
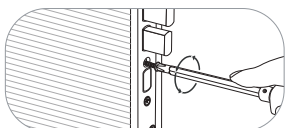
Tighten the screws after adjustment and plug the adjustment holes with silicone plug, which can play a certain waterproof effect.



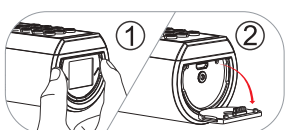
Due to the security reason, the front handle cannot be taken off.



Installation pictures



Resetting diagram



1. Opening the silicone cover

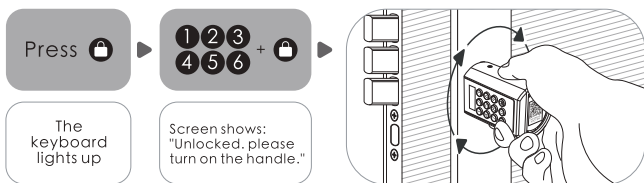
2. Find the Thimble in the attached accessories

3. Find the hole where the reset button is located

4. Insert the thimble into the hole and press the reset button

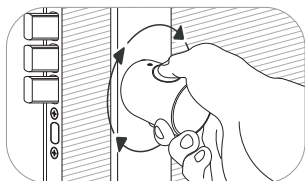
Unlock and lock

Unlock the door from outside



The knob can be rotated 360° degree freely after locked.

To protect the lock not be damaged by torsion forcefully.



Low battery prompt:

After waking up, the screen displays:



Battery Low



After 3 "beep beep beep" beeps. The screen prompts: "Battery Low".

Please replace the battery promptly when the above message appears.

FAQ

● What should I do when I receive the lock?

When you received the lock, please modify the default password "123456" to your own admin password first, so please keep it in your mind.

● Where can I find the lock ID?

Please find the lock ID with 8 digits number on the middle of lock, or find it on packing box.

● When will the low battery alarm?

The battery is below 20%.

● What is the USB(Type-C) backup key for?

USB(Type-C) backup key is spare key, for emergency situations, like when the lock is broken or battery run out, then you can use power bank to charge the lock via USB(Type-C) cable, then use our app to unlock the lock.

● How can contact customer service?

Please contact this email:
Service@WelockGlobal.com

Bluetooth activation and login instructions

Scan the QR code on the lock



Select "Android/iOS" to download

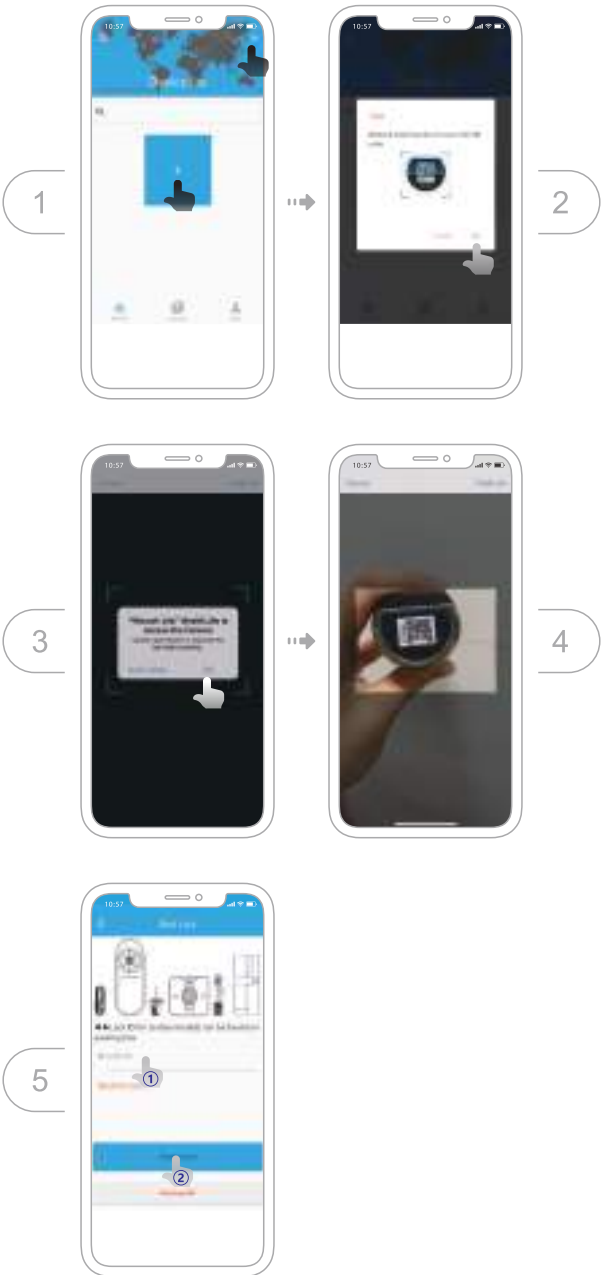


Log in to the app

- ① Select your country/region
- ② Enter the phone number/email to get the verification code
- ③ Click "Send"
- ④ Enter the verification code after receiving the message
- ⑤ Click "Login"





Bind the device



Specifications

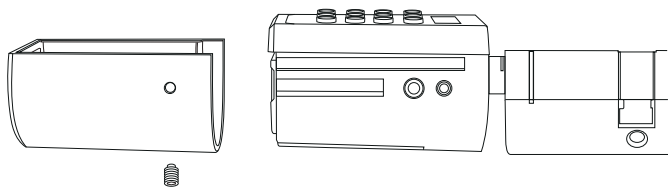
Brand	WE.LOCK
Applicable door types	Wooden doors, interior doors, entrance doors etc
Adjustable range	50-100 mm
Operating Temperature	-25°C - 60°C
Pressing Cycle Times	100,000 Times
Material of handle	Zinc Alloy
Way to unlock	Passcode / IC card / Bluetooth
Battery Type	3*AAA Battery
Power input	3.6V-4.5V
Battery Replacement	Replaceable
Color	Silver
Battery Life	10-12 months

Operating instruction

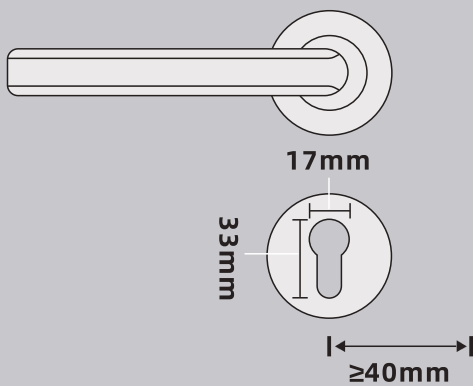
- 1) Enter the wrong passcode 5 times continuously . the system is locked for three minutes and cannot operate.
- 2) Press  to wake up the keyboard+10 digits temporary passcodeEnter the wrong passcode 5 times continuously, the system is locked for three minutes and the cannot operate. Temporary passcode generation needs to be donein the App. The time on the screen should be the same as the time on the phone, otherwise the temporary passcode will be invalid.
- 3) Press  to wake up the keyboard+ swipe the IC cards
Swipe the unmatched card 5 times continuously, the system is locked for three minutes and the cannot operate. Any IC card can unlock the door in factory state.
- 4) Bind the lock on APP
Bind the lock on APP via Bluetooth, click "unlock" , and the phone time will be synchronized to the lock via Bluetooth.

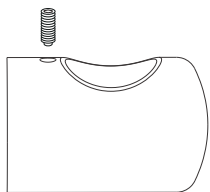
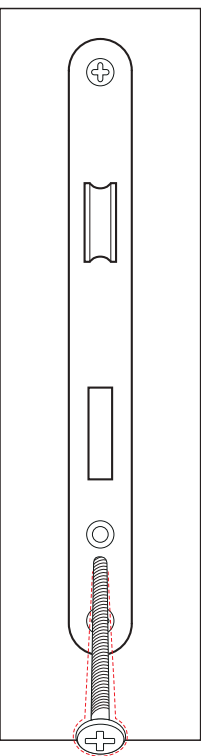
Katalog

• Anwendbare Größe	13
• Produktbestandteile	15
• 1.Passcode:Flussdiagramm	16
• 2.RFID-Karte: Flussdiagramm	
• 3.Andere Einstellungen: Flussdiagramm	17
• Zubehör liste (TOOL BOX)	18
• Batterie einbauen	
• Einstellen der Länge des Zylinders	19
• Bilder der Installation	
• Entriegelungsdiagramm	
• Entriegeln und Verriegeln	20
• HÄUFIG GESTELLTE FRAGEN	
• Anweisungen zur Bluetooth-	21
Aktivierung und Anmeldung	
• Wählen Sie "Android/iOS" zum Herunterladen	
• Bei der App anmelden	
• Binden Sie das Gerät	22
• Spezifikationen	23
• Betriebsanleitung	



Anwendbare Größe

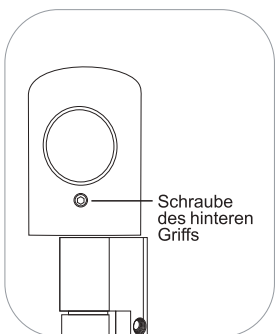
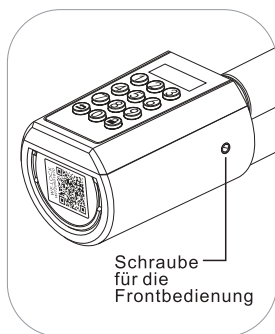
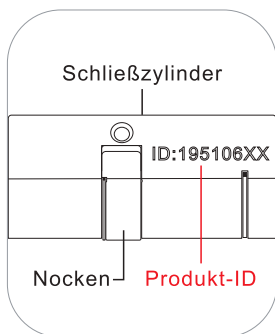




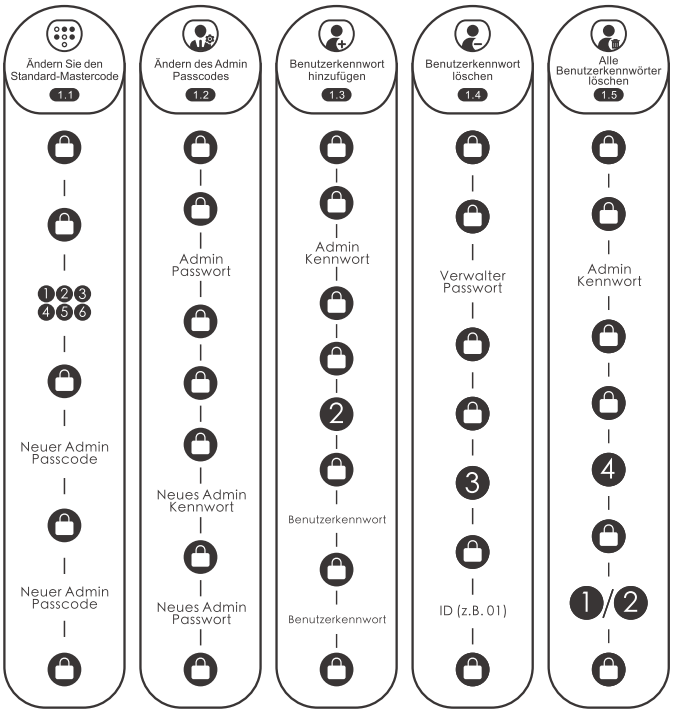
50-100mm



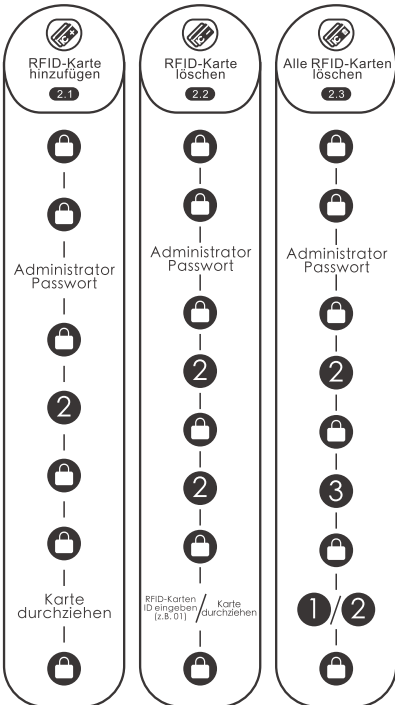
Produktkomponenten



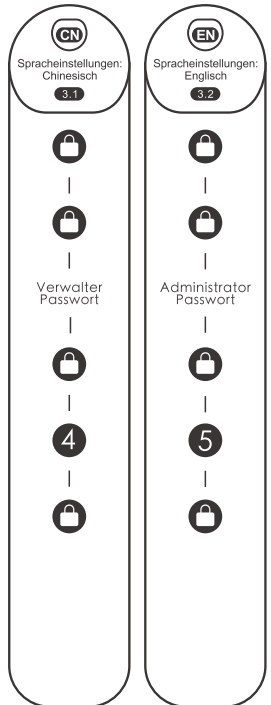
1. Passcode: Flussdiagramm



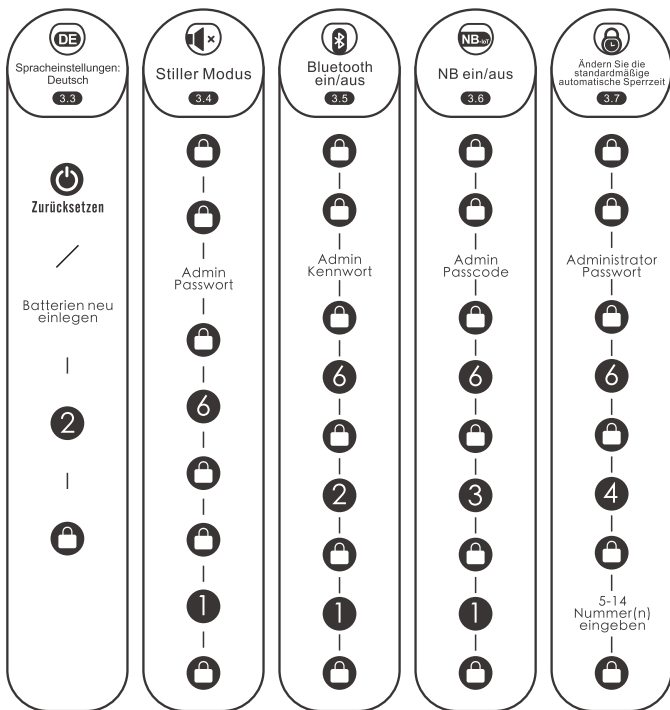
2. RFID-Karte: Flussdiagramm



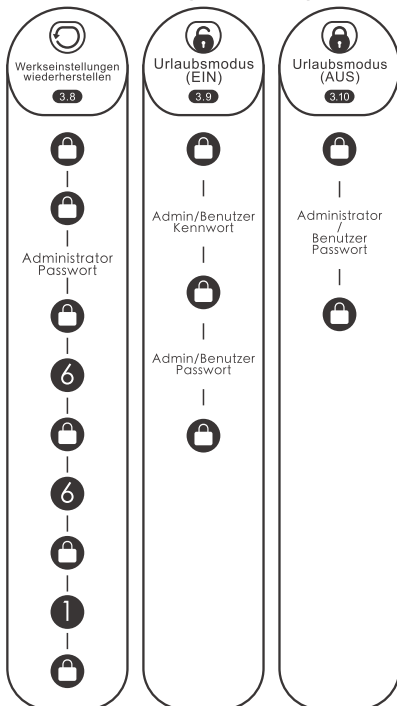
3. Andere Einstellungen: Flussdiagramm



3. Andere Einstellungen: Flussdiagramm



3. Andere Einstellungen: Flussdiagramm





Scannen Sie den QR-Code auf dem Schloss

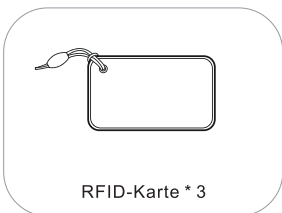


Herunterladbare Anweisungen & Videos ansehen

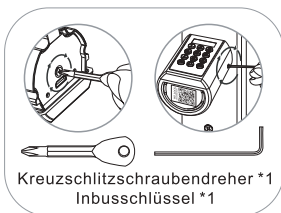
Eine clevere Art, Ihre Tür zu öffnen. WE.LOCK
www.WELOCK.com

Zubehör liste (TOOL BOX)

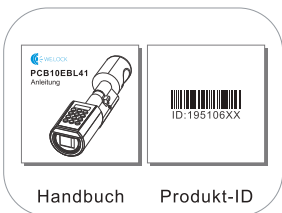
Sollte das Zubehör fehlen, wenden Sie sich bitte rechtzeitig an den Kundendienst.



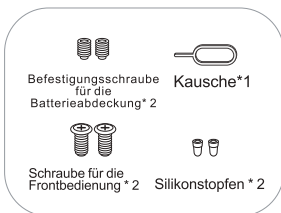
RFID-Karte * 3



Kreuzschlitzschraubendreher *1
Inbusschlüssel *1

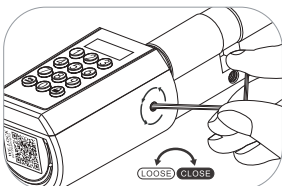


Handbuch Produkt-ID

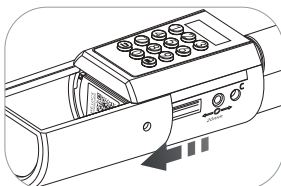


Befestigungsschraube für die Batterieabdeckung* 2 Kausche*1
Schraube für die Frontbedienung* 2 Silikonstopfen * 2

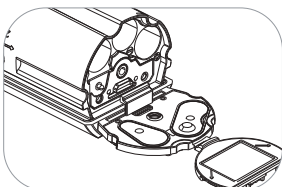
Batterie einbauen



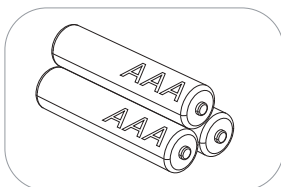
1. Lösen Sie die Schrauben mit dem Inbusschlüssel



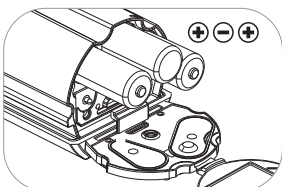
2. Öffnen Sie die Abdeckung aus rostfreiem Stahl



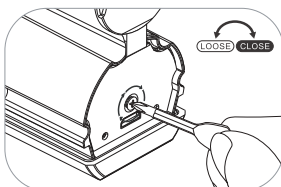
3. Öffnen Sie die Batterieabdeckung



4.3 * AAA-Batterie
(Bitte kaufen Sie sie selbst)



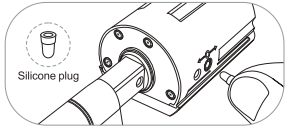
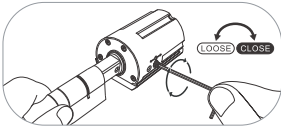
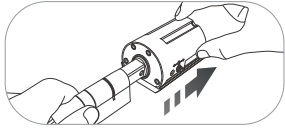
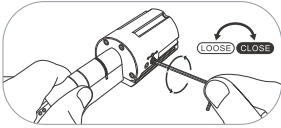
5. Batterie einbauen



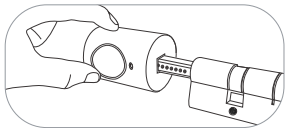
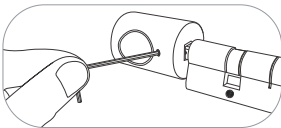
6. Befestigen Sie die Batterieabdeckung und ziehen Sie die Schrauben fest.

Einstellen der Länge des Zylinders

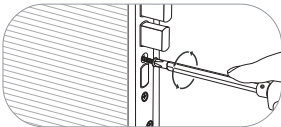
Je nach gewünschter Zylinderlänge können Sie die Innen- und Außenlänge einstellen, indem Sie die Schraube mit dem Schraubenzieher lösen und dann den Griff bei Bedarf herausziehen. Ziehen Sie die Schrauben nach der Einstellung wieder fest und verschließen Sie die Einstelllöcher mit einem Silikonstopfen, der eine gewisse wasserdichte Wirkung hat.



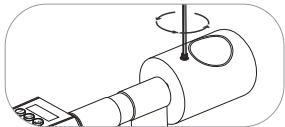
Aus Sicherheitsgründen kann der vordere Griff nicht abgenommen werden.



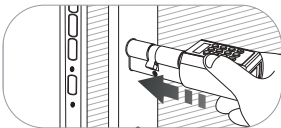
Bilder vom Einbau



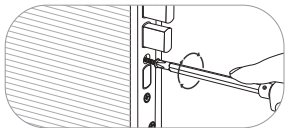
1. Entfernen Sie die Befestigungsschraube und den Originalzylinder



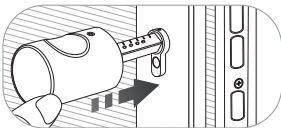
2. Lösen Sie die Schrauben und nehmen Sie den hinteren Griff heraus



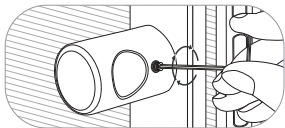
3. Der Schließzylinder wird von außen in das Schlossloch eingebaut



4. Installation Befestigungsschrauben

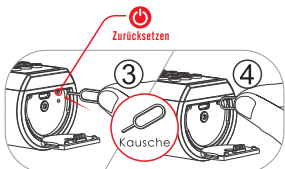
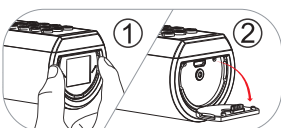


5. Hinteren Griff montieren



6. Feste Schraube am hinteren Griff

Rückstellendiagramm

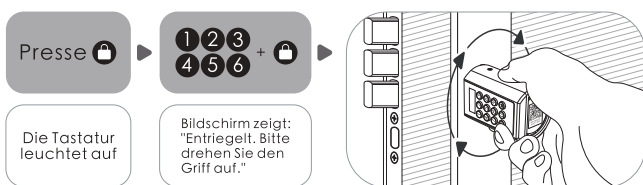


1. Öffnen Sie die Silikonabdeckung 2. Suchen Sie die Kausche im beiliegenden Zubehör
3. Suchen Sie das Loch, in dem sich der Reset-Knopf befindet

4. Stecken Sie den Fingerhut in das Loch und drücken Sie den Reset-Knopf

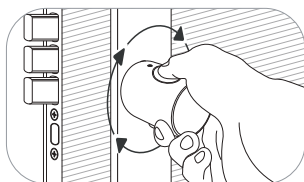
Entriegeln und Verriegeln

Entriegeln Sie die Tür von außen



Der Knopf kann nach dem Abschließen um 360° Grad frei gedreht werden.

Zum Schutz des Schlosses nicht durch Verdrehung gewaltsam beschädigt werden.



Anzeige für schwache Batterie:

Nach dem Aufwachen wird der Bildschirm angezeigt:



Batterie schwach



Nach 3 Piep-Piep-Piep-Tönen erscheint auf dem Bildschirm die Meldung: "Batterie schwach".

Bitte tauschen Sie die Batterie umgehend aus, wenn die obige Meldung erscheint.

HÄUFIG GESTELLTE FRAGEN (FAQ)

• Was sollte ich tun, wenn ich das Schloss erhalte?

Wenn Sie das Schloss erhalten haben, ändern Sie bitte zuerst das Standard-Passwort "123456" in Ihr eigenes Admin-Passwort, also merken Sie es sich bitte.

• Wo kann ich die Schloss-ID finden?

Bitte finden Sie die 8-stellige Schloss-ID in der Mitte des Schlosses oder auf der Verpackung.

• Wann wird der Alarm bei niedrigem Batteriestand ausgelöst?

Die Batterie ist unter 20 %.

• Wofür ist der USB(Type-C) -Backup-Schlüssel?

USB(Type-C)-Backup-Schlüssel ist Ersatzschlüssel, für Notfallsituationen, wie wenn das Schloss gebrochen ist oder die Batterie leer ist, dann können Sie Powerbank verwenden, um das Schloss über USB(Type-C)-Kabel aufzuladen, dann verwenden Sie unsere App, um das Schloss zu entsperren.

• Wie kann ich den Kundendienst kontaktieren?

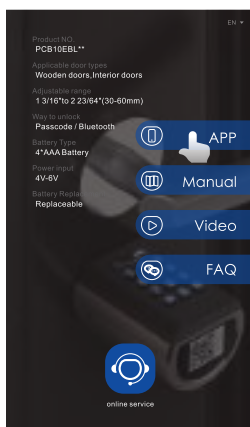
Bitte kontaktieren Sie diese E-Mail:
Service@WelockGlobal.com

Anweisungen zur Aktivierung und Anmeldung über Bluetooth

Scannen Sie den QR-Code auf dem Schloss



Wählen Sie "Android/iOS" zum Herunterladen

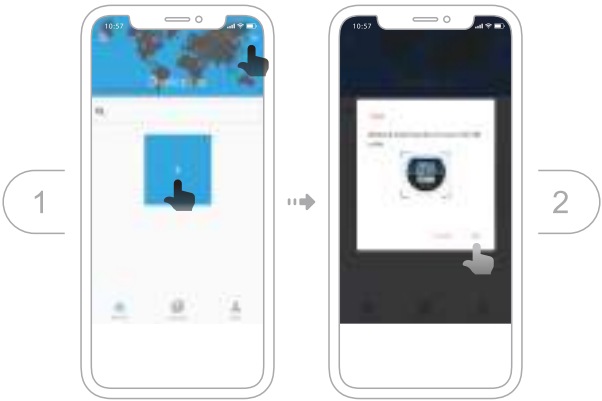


Bei der App anmelden

- ① Wählen Sie Ihr Land/Ihre Region.
- ② Geben Sie die Telefonnummer/E-Mail ein, um den Verifizierungscode zu erhalten.
- ③ Klicken Sie auf "Senden".
- ④ Geben Sie den Verifizierungscode ein, nachdem Sie die Nachricht erhalten haben.
- ⑤ Klicken Sie auf "Anmelden".





Binden Sie das Gerät



Spezifikationen

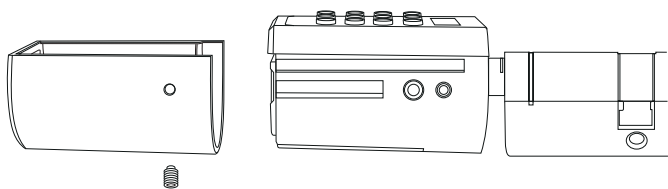
Marke	WE.LOCK
Anwendbare Türtypen	Holztüren, Innentüren, Eingangstüren usw
Einstellbarer Bereich	50-100 mm
Betriebstemperatur	-25°C -60°C
Zykluszeiten für das Pressen	100.000 Mal
Material des Griffs	Zink-Legierung
Art der Entriegelung	Passcode/RFID-Karte/Bluetooth
Batterie-Typ	3*AAA-Batterie
Leistungsaufnahme	3.6V-4.5V
Austausch der Batterie	Ersetzbar
Farbe	Silber
Lebensdauer der Batterie	10-12 Monate

Betriebsanleitung

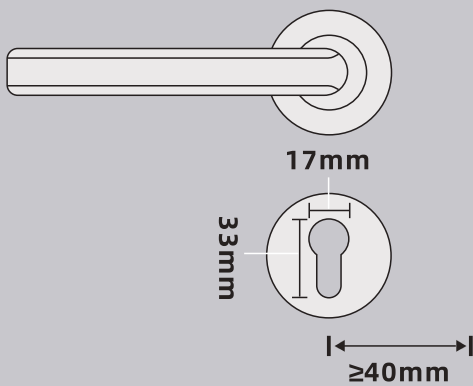
- 1) Wenn Sie 5 Mal hintereinander einen falschen Passcode eingeben, wird das System für drei Minuten gesperrt und kann nicht bedient werden.
- 2) Drücken Sie  um die Tastatur + 10 Ziffern temporären Passcode aufzuwecken. Wenn Sie 5 Mal hintereinander ein falsches Passwort eingeben, wird das System für drei Minuten gesperrt und kann nicht bedient werden. Der temporäre Passcode muss in der App erstellt werden. Die Uhrzeit auf dem Bildschirm sollte mit der Uhrzeit auf dem Telefon übereinstimmen, andernfalls ist der temporäre Passcode ungültig.
- 3) Drücken Sie  um die Tastatur aufzuwecken und die RFID-Karten zu wischen. Wischen Sie die nicht übereinstimmende Karte 5 Mal ununterbrochen durch, wird das System für drei Minuten gesperrt und kann nicht bedient werden. Jede RFID-Karte kann die Tür im Werkzustand entriegeln.
- 4) Verbinden Sie das Schloss mit der APP
Verbinden Sie das Schloss mit der APP über Bluetooth, klicken Sie auf "Entsperren", dann wird die Telefonzeit über Bluetooth mit dem Schloss synchronisiert.

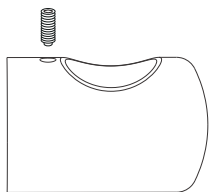
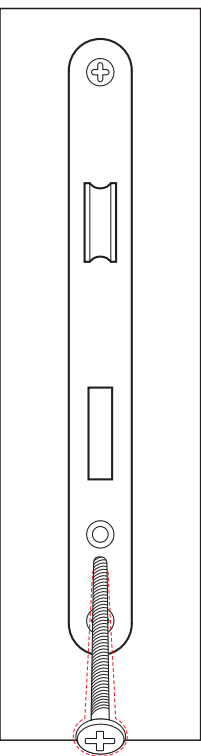
Katalog

- Dimensione applicabile 25
- Componenti del 27
- 1.Passcode: Diagramma di flusso..... 28
- 2.RFID carta: Diagramma di flusso
- 3. Altre impostazioni: Diagramma di flusso 29
- Elenco degli accessori (TOOL BOX)..... 30
- Installare la batteria
- Regolare la lunghezza del cilindro 31
- Immagini di installazione
- Diagramma di reimpostazione
- Sblocco e blocco 32
- DOMANDE FREQUENTI(FAQ)
- Istruzioni per l'attivazione del Bluetooth e il login.... 33
- Selezionare "Android/iOS" per scaricare
- Accedere all'applicazione
- Vincolare il dispositivo 34
- Specifiche 35
- Istruzioni per l'uso



Dimensione applicabile

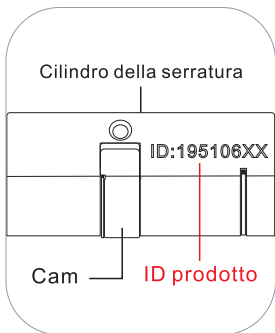




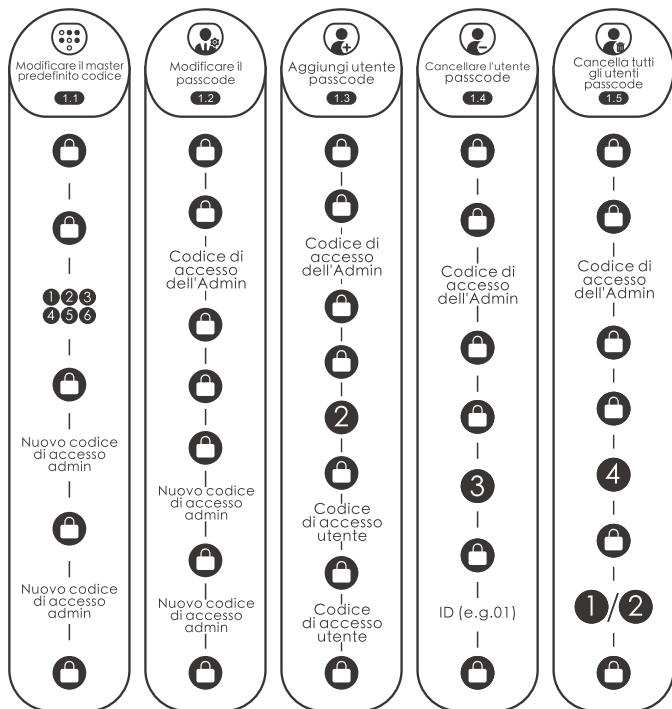
50-100mm



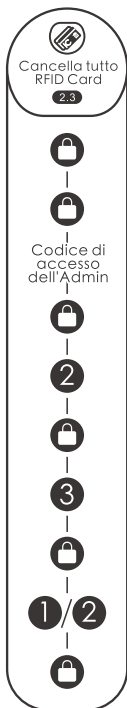
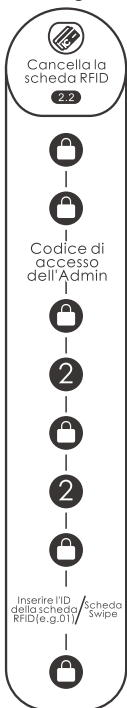
Dimensione applicabile



1. Codice di accesso: Diagramma di flusso



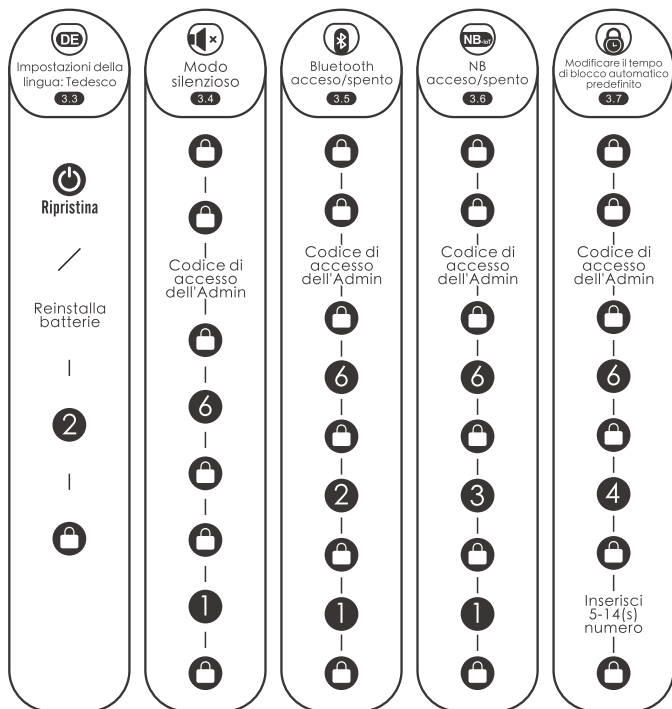
2. Scheda RFID: Diagramma di flusso



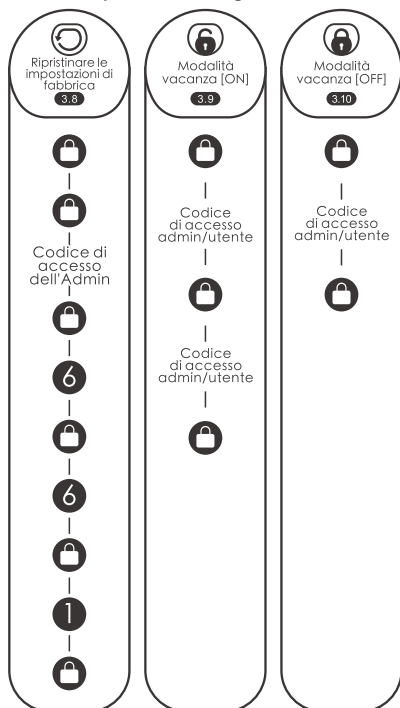
3. Altre impostazioni: Diagramma di flusso



3. Altre impostazioni: Diagramma di flusso



3. Altre impostazioni: Diagramma di flusso





Scannerizzare il codice QR sulla serratura.

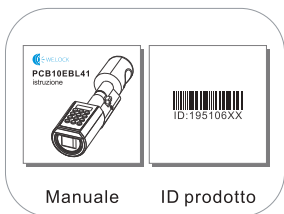
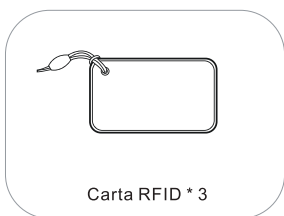


Istruzioni scaricabili & Guardare video

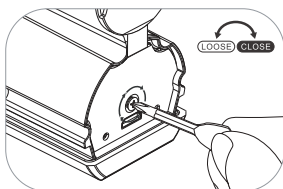
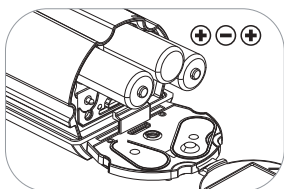
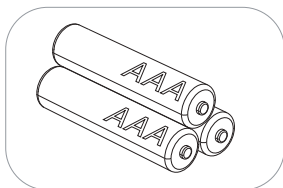
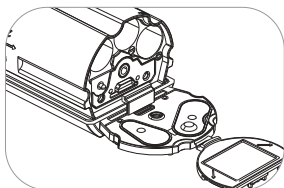
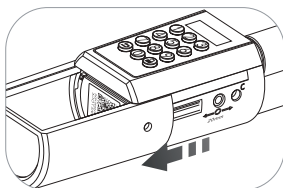
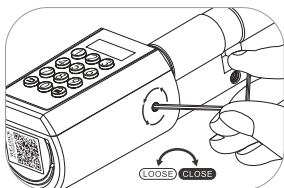
Un modo intelligente per aprire la tua porta. WELOCK
www.WELOCK.com

Elenco degli accessori (TOOL BOX)

Se c'è una mancanza di accessori, si prega di contattare il servizio clienti in tempo.



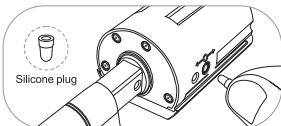
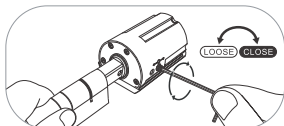
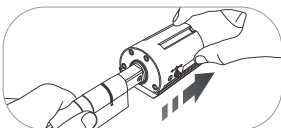
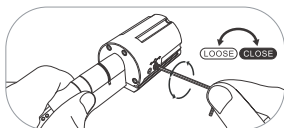
Installare la batteria



Adjust the length of the cylinder

A seconda della lunghezza richiesta del cilindro, è possibile regolare la lunghezza interna ed esterna allentando la vite con il cacciavite e poi estraendo la maniglia al bisogno.

Serrare le viti dopo la regolazione e tappare i fori di regolazione con un tappo di silicone. Che può giocare un certo effetto impermeabile.



Per motivi di sicurezza, la maniglia anteriore non può essere tolta.

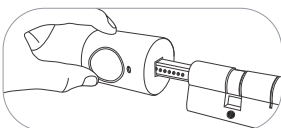
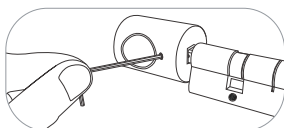
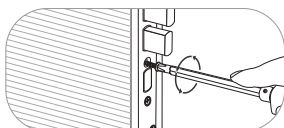
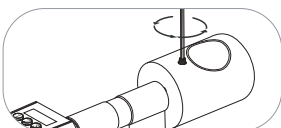


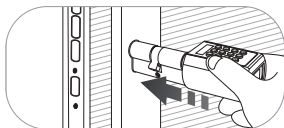
Immagine dell'installazione



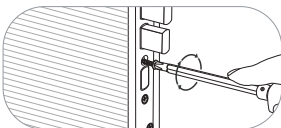
1. Rimuovere la vite di fissaggio e il cilindro originale



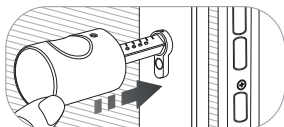
2. Togliere le viti ed estrarre la maniglia posteriore



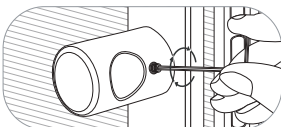
3. Il cilindro della serratura è installato nel foro della serratura dall'esterno



4. Installazione Viti di fissaggio

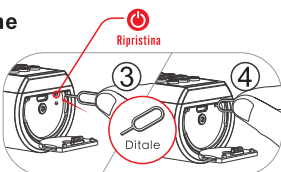
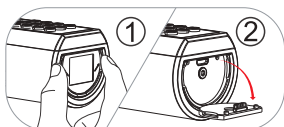


5. Installare la maniglia posterior



6. Vite fissa della maniglia posteriore

Diagramma di reimpostazione



1. Aprire il coperchio in silicone 2. Trovare il ditale negli accessori allegati
3. Trovare il foro dove si trova il pulsante di reset
4. Inserire il ditale nel foro e premere il pulsante di reset

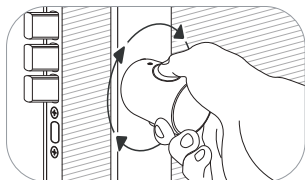
Sblocca e blocca

Sbloccare la porta dall'esterno



La manopola può essere ruotata liberamente di 360° gradi dopo essere stata bloccata.

Per proteggere la serratura non essere danneggiata dalla torsione con forza.



! Avviso di batteria scarica:

Dopo il risveglio, lo schermo mostra:

Batteria Scarica

Battery Low

Si prega di sostituire prontamente la batteria quando appare il messaggio di cui sopra.

DOMANDE FREQUENTI (FAQ)

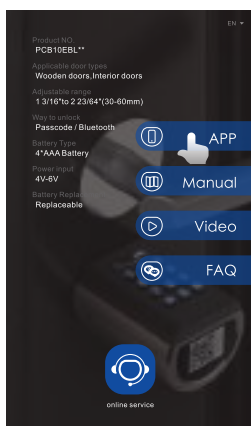
- **Cosa devo fare quando ricevo il lucchetto?**
Quando hai ricevuto il lucchetto, per favore modifica prima la password di default "123456" con la tua password di amministrazione, quindi tienila a mente.
- **Dove posso trovare l'ID della serratura?**
Si prega di trovare l'ID della serratura con un numero di 8 cifre sul centro della serratura, o trovarlo sulla scatola di imballaggio.
- **Quando di l'allarme di batteria scarica?**
La batteria è sotto il 20%.
- **A cosa serve la chiave di backup USB(Type-C)?**
La chiave di backup USB (Type-C) è la chiave di riserva, per le situazioni di emergenza, come quando la serratura è rotta o la batteria si esaurisce, quindi è possibile utilizzare la banca di potere per caricare la serratura tramite cavo USB (Type-C), quindi utilizzare la nostra applicazione per sbloccare la serratura.
- **Come posso contattare il servizio clienti?**
Si prega di contattare questo email:
Service@WelockGlobal.com

Istruzioni per l'attivazione del Bluetooth e il login

Scannerizzare il codice QR sulla serratura.



Seleziona "Android/iOS" per scaricare



Accedere all'applicazione

- 1 Seleziona il tuo paese/regione
- 2 Inserisci il numero di telefono/email per ottenere il codice di verifica
- 3 Cliccare "Inviare"
- 4 Inserisci il codice di verifica dopo ricevendo il messaggio
- 5 Clicca su "Accedi"





Vincolare il dispositivo



Specifiche

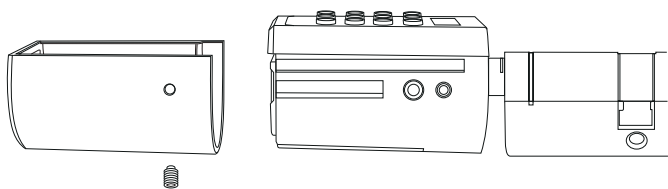
Marchio	WE.LOCK
Tipi di porte applicabili	Porte in legno, porte interne, porte d'ingresso, ecc
Gamma regolabile	50-100 mm
Temperatura d'esercizio	-25°C-60°C
Tempi di ciclo di pressatura	100,000 Tempi
Materiale della maniglia	Lega di zinco
Modo per sbloccare	Codice di accesso / carta RFID / Bluetooth
Tipo di batteria	3*AAA Batteria
Ingresso di potenza	3.6V-4.5V
Sostituzione della batteria	Sostituibile
Colore	Argento
Durata della batteria	10-12 mesi

Istruzioni per l'uso

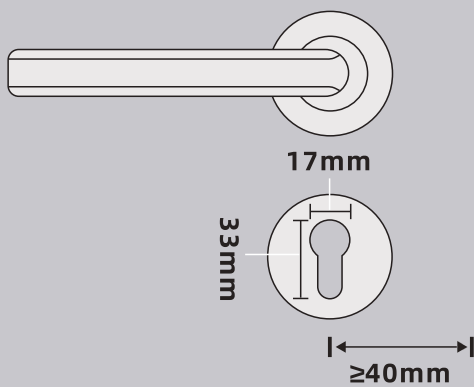
- 1) Se si inserisce il codice sbagliato 5 volte continuamente, il sistema sarà bloccato per tre minuti e non potrà funzionare.
- 2) Premere  per svegliare la tastiera+10 cifre di codice temporaneo Inserisci il codice sbagliato 5 volte continuamente, il sistema sarà bloccato per tre minuti e non può funzionare. La generazione del codice di accesso temporaneo deve essere fatta nell'App. L'ora sullo schermo deve essere la stessa del telefono, altrimenti il codice di accesso temporaneo non sarà valido.
- 3) Premere  per svegliare il keyboard+swipe le carte RFID. Swipe la carta spaiata 5 volte continuamente, il sistema è bloccato per tre minuti e il non può operare. Qualsiasi carta RFID.
- 4) Legare su APP
Legare la serratura su APP via Bluetooth, fare clic su "sbloccare", quindi il tempo del telefono sarà sincronizzato alla serratura via Bluetooth.

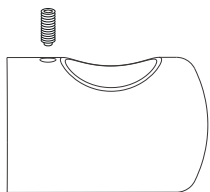
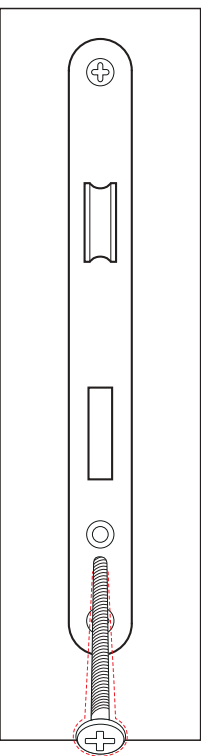
Catalogue

- Taille applicable..... 37
- Composants du produit 39
- 1.Code d'accès: Organigramme 40
- 2.Carte RFID Organigramme
- 3.Autres paramètres: Organigramme..... 41
- Liste des pièces (BOITE À OUTILS)..... 42
- Installation de la batterie
- Adjust the length of the cylinder 43
- Photos d'installation
- Diagramme de réinitialisation
- Déverrouillage et verrouillage..... 44
- FAQ
- Activation Bluetooth et instructions de connexion..... 45
- Sélection "Android/iOS" pour télécharger
- Connexion à l'application
- Lier l'appareil 46
- Spécifications 47
- FAQ



Taille applicable

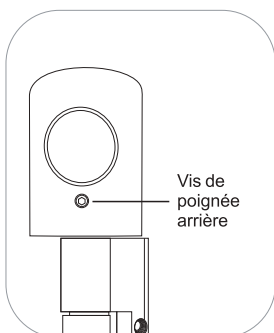
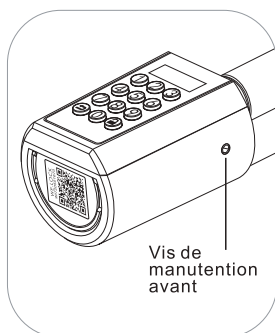
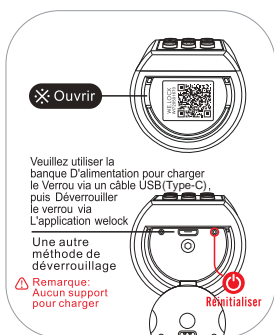
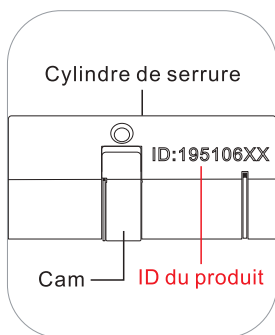
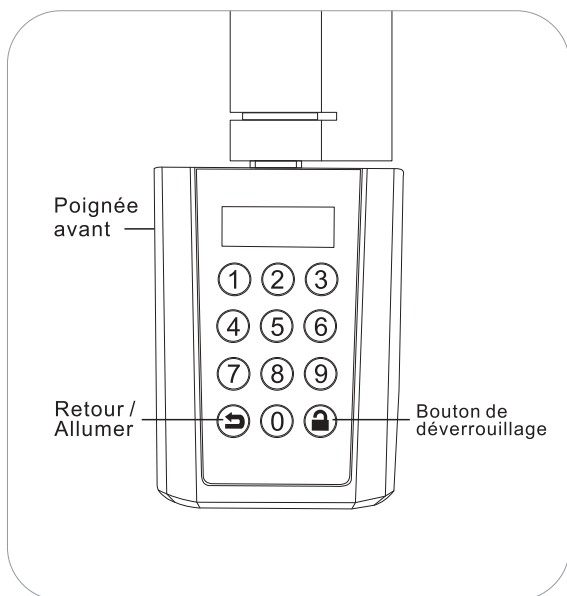




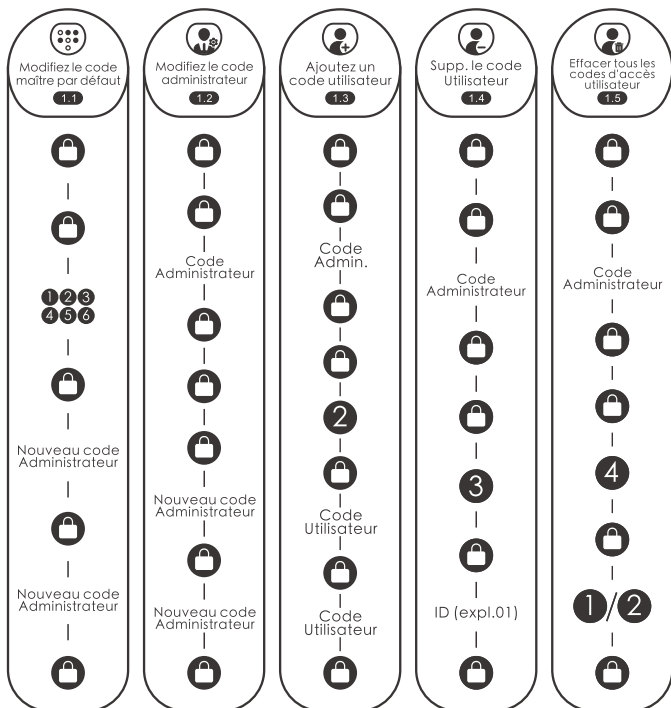
50-100mm



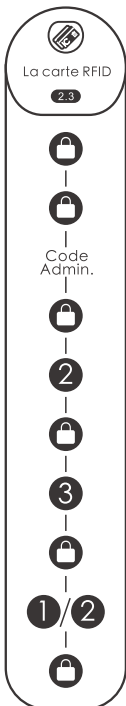
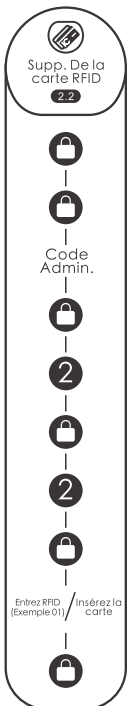
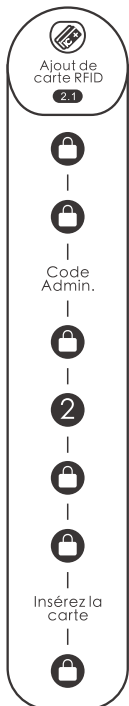
Composants du produit



1. Code d'accès: Organigramme



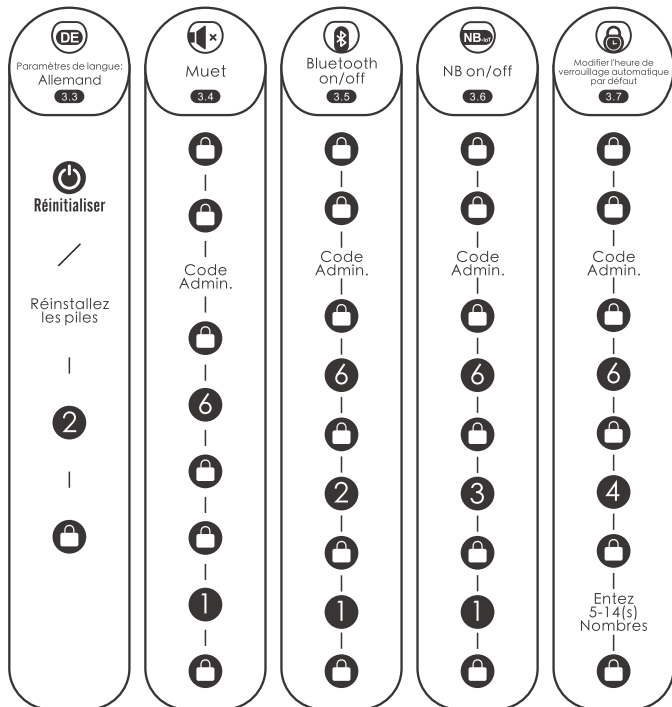
2. Carte RFID: Organigramme



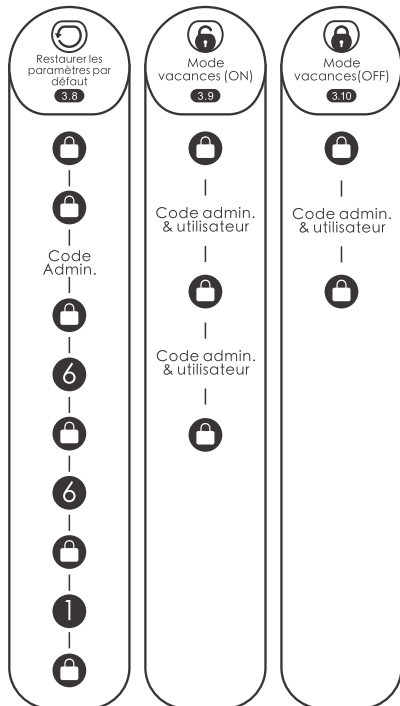
3. Autres paramètres: Organigramme



3. Autres paramètres: Organigramme



3. Autres paramètres: Organigramme



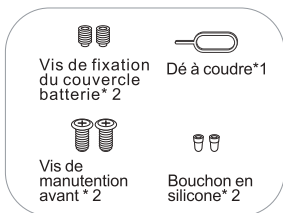
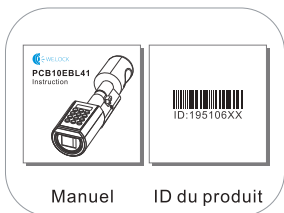
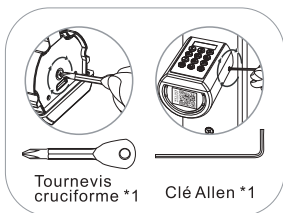
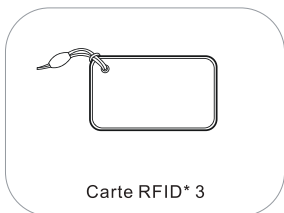
Scannez le code QR sur la serrure.

Instructions téléchargeables & Regarde des vidéos

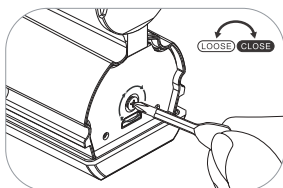
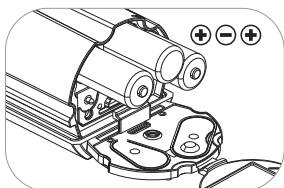
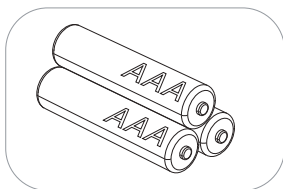
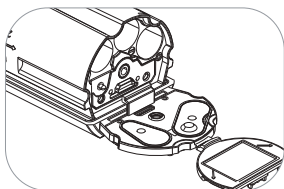
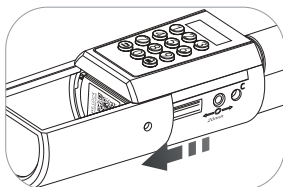
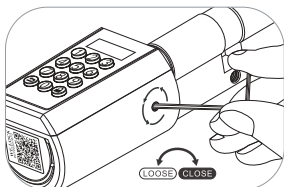
Une façon intelligente d'ouvrir votre porte. WELOCK
www.WELOCK.com

Liste des pièces (BOÎTE À OUTILS)

S'il y a un manque d'accessoires, veuillez contacter le service client sur le champ.



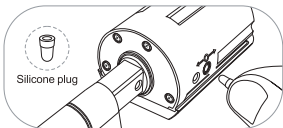
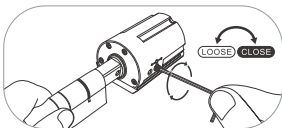
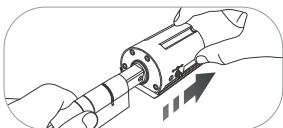
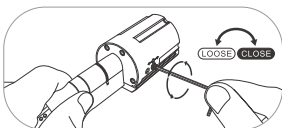
Installation de la batterie



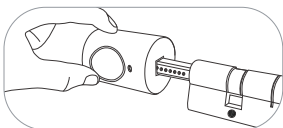
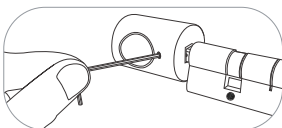
Ajustement de longueur du cylindre

En fonction de la longueur de cylindre requise, vous pouvez ajuster la longueur intérieure et extérieure en desserrant la vis avec le tournevis, puis en tirant la poignée au besoin.

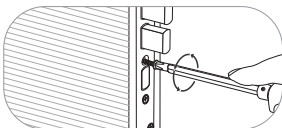
Serrez les vis après le réglage et bouchez les trous de réglage avec un bouchon en silicone qui peut jouer un certain effet imperméable.



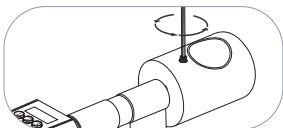
Pour des raisons de sécurité, la poignée avant ne peut pas être retirée.



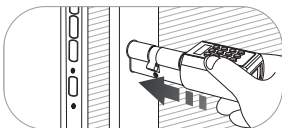
Photos d'installation



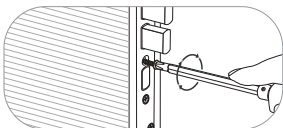
1. Retirez les vis de fixation et le cylindre d'origine



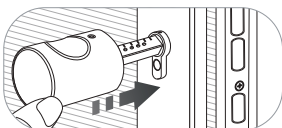
2. Retirez les vis et retirez la poignée arrière



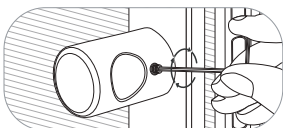
3. Le cylindre de serrure est installé dans le trou de serrure de l'extérieur



4. Installez le Vis de fixation

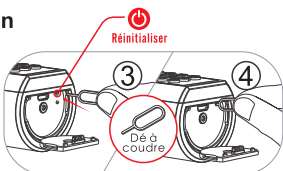
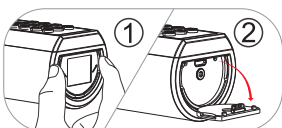


5. Installez la poignée arrière



6. Vis de poignée arrière fixe

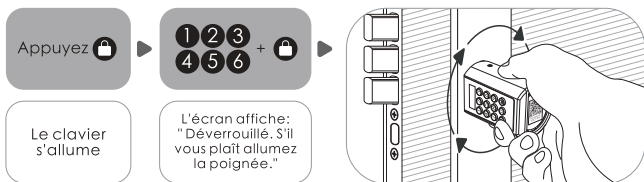
Diagramme de réinitialisation



1. Ouvrez le couvercle en silicone 2. Trouvez le dé à coudre dans les pièces ci-joint
3. Trouvez le trou où se trouve le bouton de réinitialisation
4. Insérez le dé à coudre dans le trou et appuyez sur le bouton de réinitialisation

Déverrouillage et verrouillage

Déverrouillez la porte de l'extérieur

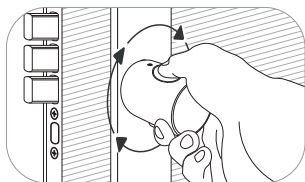


Le clavier s'allume

L'écran affiche:
"Déverrouillé. S'il
vous plaît allumez
la poignée."


Le bouton peut être tourné à 360°degrés librement après verrouillage.

Pour protéger la serrure ne pas êtreendommagé par torsion avec force.




Message de batterie faible:

Après l'éveil, l'écran affiche:



Batterie Faible



Battery Low

Après 3 "Beep, Beep, Beep" Beeps. L'écran affiche: "Batterie Faible".

Veillez remplacer la batterie rapidement lorsque le message ci-dessus apparaît.

FAQ

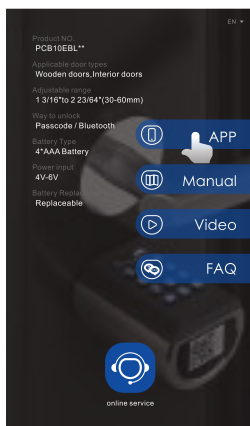
- **Que dois-je faire quand je reçois la serrure?**
Lorsque vous recevez le cadenas, veuillez d'abord remplacer le mot de passe par défaut "123456" par votre propre mot de passe administrateur, et souvenez-vous en.
- **Où puis-je trouver l'ID de verrouillage?**
Vous allez trouver l'ID de la serrure avec un numéro à 8 chiffres au milieu de la serrure, ou le trouver sur la boîte d'emballage.
- **Quand l'alarme de batterie faible va sonner?**
La batterie est en dessous de 20%.
- **À quoi sert la clé de sauvegarde USB(Type-C)?**
La clé de sauvegarde USB(Type-C) est une clé de rechange, pour les situations d'urgence, comme lorsque le verrou se casse ou que la batterie s'épuise, vous pouvez alors utiliser la banque d'alimentation pour charger le verrou via un câble USB(Type-C) puis utiliser notre application pour déverrouiller le verrou.
- **Comment contacter le service client ?**
Veillez nous contacter via e-mail sur: Service@WelockGlobal.com

Activation Bluetooth et instructions d'accès

Scannez le code QR sur la serrure.

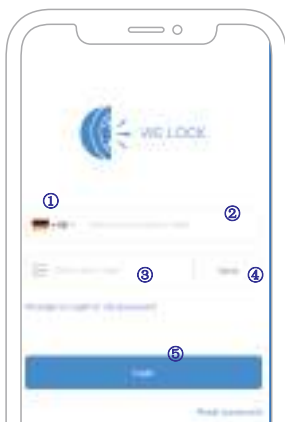


Sélectionnez "Android/iOS" pour télécharger

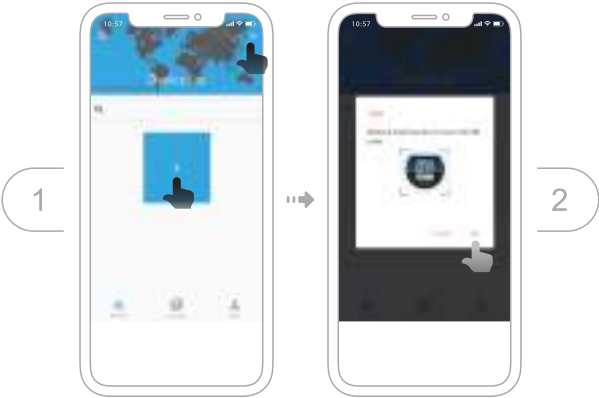


Accédez à l'application

- ① Sélectionnez votre pays/région
- ② Entrez le numéro de téléphone/email pour obtenir le code de vérification
- ③ Cliquez sur "Envoyer"
- ④ Entrez le code de vérification après avoir reçu le message
- ⑤ Cliquez sur "Connexion"



Lier l'appareil



Spécifications

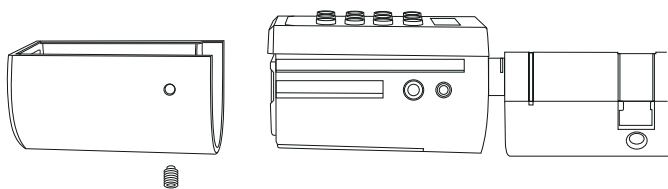
Marque	WE.LOCK
Types de portes applicables	Portes en bois, portes intérieures, portes d'entrée, etc
Plage réglable	50-100 mm
Température de fonctionnement	-25°C-60°C
Temps de cycle de pressage	100,000 fois
Matériau de la poignée	Alliage de zinc
Façon de débloquent	Code d'accès / Carte RFID / Bluetooth
Type de batterie	3*AAA Batterie
Entrée de puissance	3.6V-4.5V
Remplacement de la batterie	Remplaçable
Couleur	Argenté
Vie de la batterie	10-12 mois

Mode d'emploi

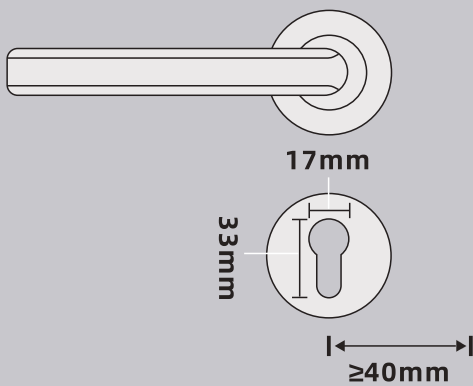
- 1) Si vous faites entrer le mauvais code d'accès 5 fois successives, Le système sera verrouillé pendant trois minutes et ne pourra pas fonctionner.
- 2) Appuyez **Ⓜ** pour activer le clavier + code d'accès temporaire à 10 chiffres. Entrez le mauvais mot de passe 5 fois en continu, le système sera verrouillé pendant trois minutes et ne pourra pas fonctionner. La génération de mot de passe temporaire doit être effectuée dans l'application. L'heure à l'écran doit être la même que l'heure sur le téléphone, sinon le mot de passe temporaire sera invalide.
- 3) Appuyez **Ⓜ** pour activer le clavier + faites glisser les cartes RFID. Après l'insertion des cartes incohérentes 5 fois successivement, le système se bloque pendant 3 minutes et ne pourra pas fonctionner. N'importe quelle carte RFID peut débloquent la porte en état d'usine.
- 4) Liez le verrou sur APP
Liez le verrou sur APP via Bluetooth, cliquez sur "déverrouiller", puis l'heure du téléphone sera synchronisée avec la serrure via Bluetooth.

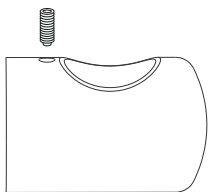
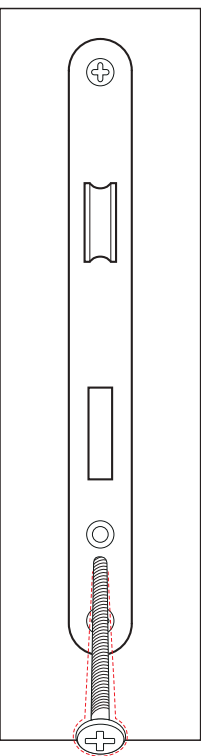
Catálogo

• Tamaño aplicable	49
• Componentes del producto	51
• 1. Código de acceso: Diagrama de flujo.....	52
• 2. Tarjeta RFID: Diagrama de flujo	
• 3. Otros ajustes: Diagrama de flujo	53
• Lista de accesorios (TOOL BOX)	54
• Instalar la batería	
• Ajustar la longitud del cilindro.....	55
• Imágenes de la instalación	
• Diagrama de reajuste	
• Desbloquear y bloquear.....	56
• PREGUNTAS MÁS FRECUENTES	
• Instrucciones de activación e inicio de se	57
• Selecciona "Android/iOS" para descargarlo	
• Inicia sesión en la aplicación	
• Enlaza el dispositivo.....	58
• Especificaciones.....	59
• Instrucciones de funcionamiento	



Tamaño aplicable

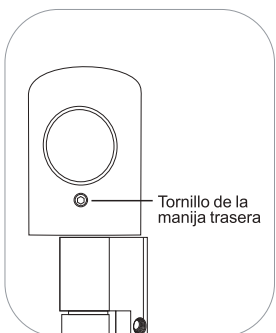
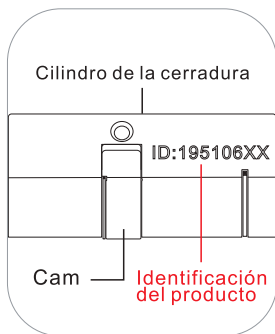




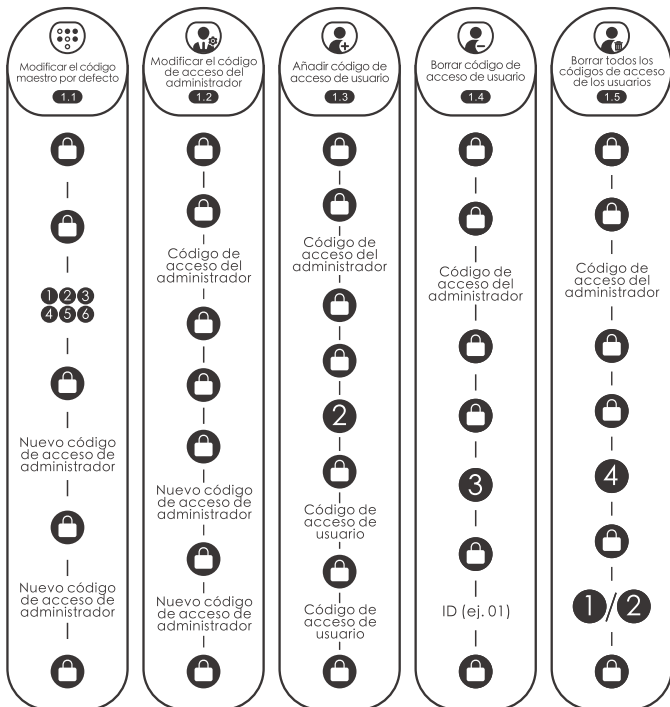
50-100mm



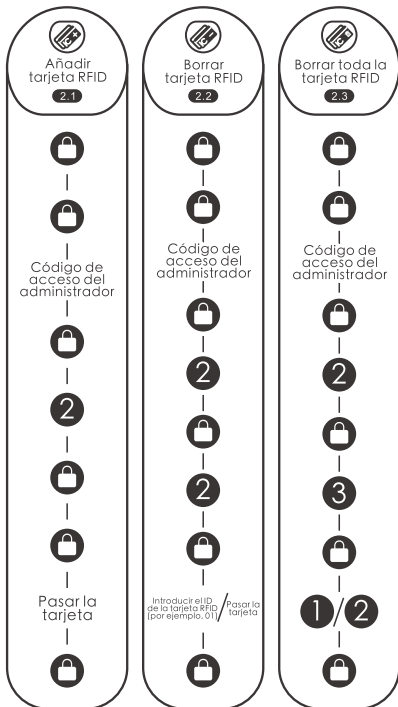
Componentes del producto



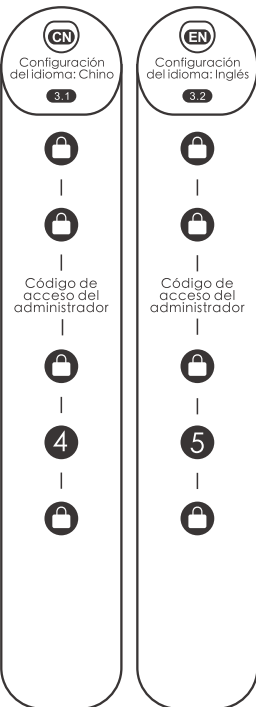
1. Código de acceso: Diagrama de flujo



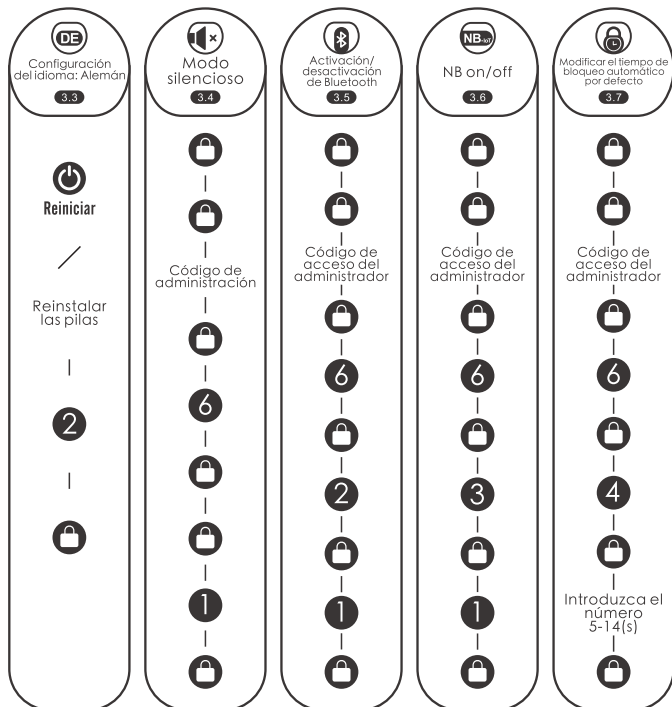
2. Tarjeta RFID: Diagrama de flujo



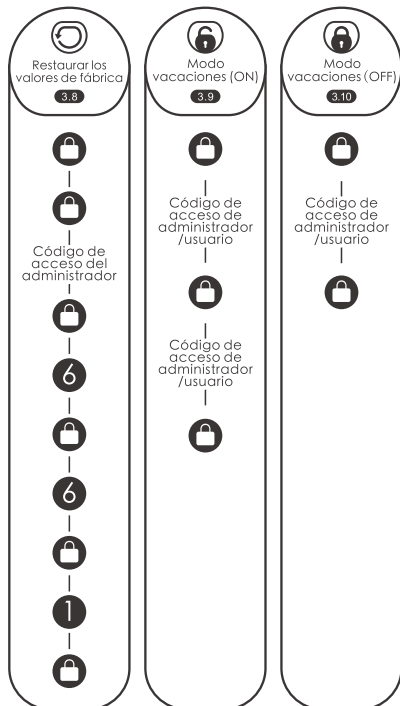
3. Otros ajustes: Diagrama de flujo



3.Otros ajustes:Diagrama de flujo



3.Otros ajustes:Diagrama de flujo





Escanea el código QR del candado.

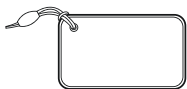


Instrucciones descargables & Ver videos

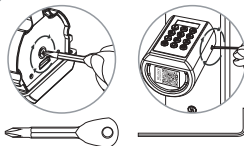
Una forma inteligente de abrir tu puerta.WELOCK
www.WELOCK.com

Lista de accesorios (TOOL BOX)

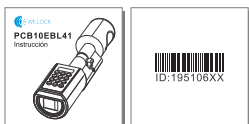
Si hay una falta de accesorios, por favor, póngase en contacto con el servicio al cliente en el tiempo.



Tarjeta RFID * 3



Destornillador Phillips *1 Llave Allen *1



Manual

Identificación del producto



Tornillo de fijación de la tapa de la batería * 2



Dedal *1

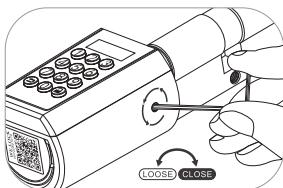


Tornillo de manipulación frontal * 2

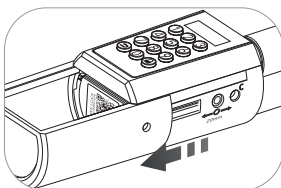


Tapón de silicona * 2

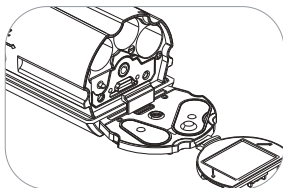
Instalar la batería



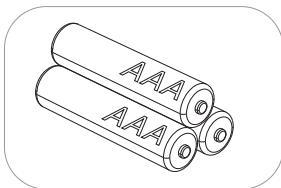
1. Afloje los tornillos con la llave Allen



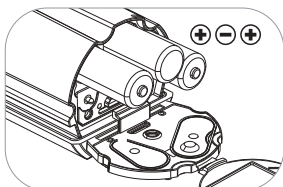
2. Abra la tapa de acero inoxidable



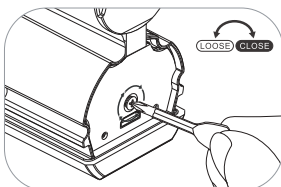
3. Abra la tapa de la batería



4.3 * Batería AAA
(Por favor, cómprela usted mismo)



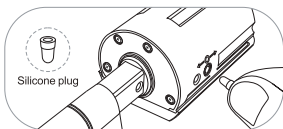
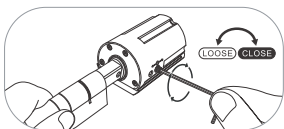
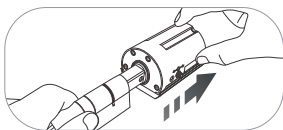
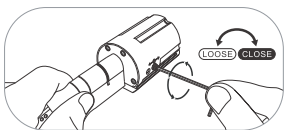
5. Instalar la batería



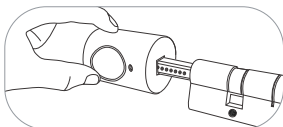
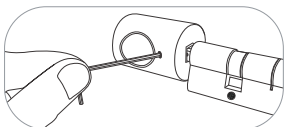
6. Fije la tapa de la batería y apriete los tornillos

Ajustar la longitud del cilindro

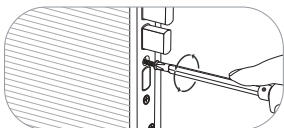
Dependiendo de la longitud del cilindro requerida, se puede ajustar la longitud interior y exterior aflojando el tornillo con el destornillador y luego sacando la manija cuando sea necesario. Apriete los tornillos después del ajuste y tape los agujeros de ajuste con el tapón de silicona, que puede desempeñar un cierto efecto impermeable.



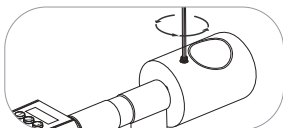
Por razones de seguridad, no se puede quitar el asa delantera.



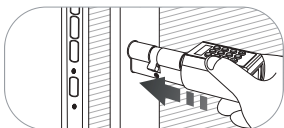
Imágenes de la instalación



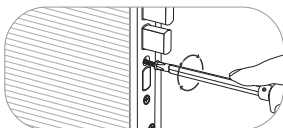
1. Retire el tornillo de fijación y el cilindro original



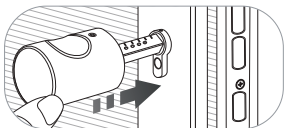
2. Saque los tornillos y extraiga el asa trasera



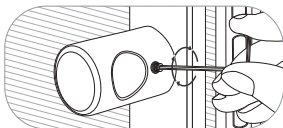
3. El cilindro de la cerradura se instala en el agujero de la cerradura desde el exterior



4. Instalación Tornillos de fijación

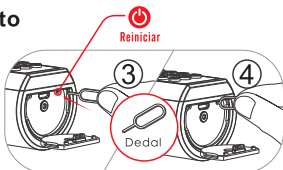
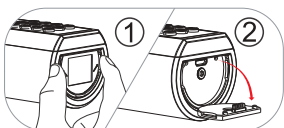


5. Instalar la manija trasera



6. Tornillo de la manija trasera fija

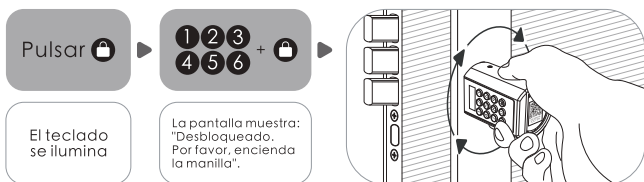
Diagrama de restablecimiento



1. Abrir la tapa de silicona 2. Encuentre el dedal en los accesorios adjuntos
3. Encontrar el orificio donde se encuentra el botón de reinicio
4. Introducir el dedal en el orificio y pulsar el botón de reinicio

Desbloquear y bloquear

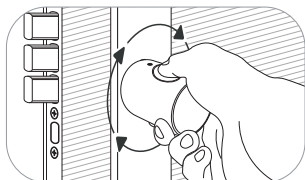
Desbloquear la puerta desde el exterior



El teclado se ilumina

El pomo puede girar 360°grados libremente después de bloquearse.

Para proteger la cerradura no ser dañado por la torsión con fuerza.



⚠

Aviso de batería baja:

Después de despertarse, la pantalla muestra:

Batería baja

Después de 3 "beep beep beep", la pantalla indica: "Batería baja".

Battery Low

Por favor, sustituya la batería rápidamente cuando aparezca el mensaje anterior.

PREGUNTAS MÁS FRECUENTES

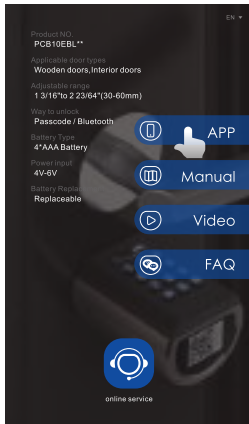
- **¿Qué debo hacer cuando reciba el candado?**
Cuando reciba el candado, por favor, modifique la contraseña por defecto "123456" a su propia contraseña de administrador primero, así que por favor manténgalo en su mente.
- **¿Dónde puedo encontrar el número de identificación de la cerradura?**
El número de identificación de la cerradura, de 8 dígitos, se encuentra en el centro de la cerradura o en la caja de embalaje.
- **¿Cuándo sonará la alarma de batería baja?**
La batería está por debajo del 20%.
- **¿Para qué sirve la llave de seguridad USB (Type-C)?**
La llave de seguridad USB (Type-C) es una llave de repuesto, para situaciones de emergencia, como cuando la cerradura se rompe o la batería se agota, entonces usted puede utilizar el banco de energía para cargar la cerradura a través del cable USB (Type-C), a continuación utilizar nuestra aplicación para desbloquear la cerradura.
- **¿Cómo puedo contactar con el servicio de atención al cliente?**
Por favor, póngase en contacto con este correo electrónico: Service@WelockGlobal.com

Instrucciones de activación e inicio de sesión de Bluetooth

Escanea el código QR del candado.



Seleccione "Android / iOS" para descargar

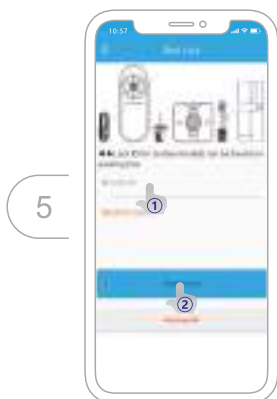
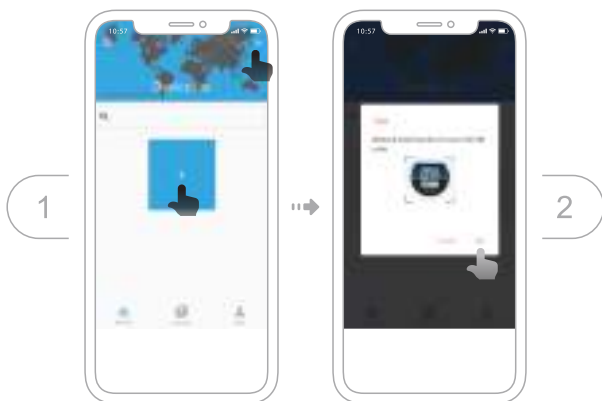


Inicie sesión en la aplicación

- ① Seleccione su país/región
- ② Introduce el número de teléfono/correo electrónico para obtener el código de verificación
- ③ Haga clic en "Enviar"
- ④ Introduzca el código de verificación después de recibir el mensaje
- ⑤ Haga clic en "Iniciar sesión"





Vincular el dispositivo



Especificaciones

Marca	WE.LOCK
Tipos de puertas aplicables	Puertas de madera, puertas interiores, puertas de entrada, etc.
Rango ajustable	50-100 mm
Temperatura de funcionamiento	-25°C-60°C
Tiempos de ciclo de prensado	100.000 veces
Material de la manilla	Aleación de zinc
Forma de desbloquear	Código de acceso / tarjeta IC / Bluetooth
Tipo de batería	3*Batería AAA
Entrada de energía	3.6V-4.5V
Sustitución de la batería	Reemplazable
Color	Plata
Duración de la batería	10-12 meses

Instrucciones de funcionamiento

- 1) Si introduce un código de acceso incorrecto 5 veces seguidas, el sistema se bloqueará durante tres minutos y no podrá funcionar.
- 2) Pulse  para activar el teclado + 10 dígitos de la contraseña temporal. Si se introduce un código de acceso incorrecto 5 veces seguidas, el sistema se bloqueará durante tres minutos y no podrá funcionar. La generación del código de acceso temporal debe hacerse en la aplicación. La hora en la pantalla debe ser la misma que la del teléfono, de lo contrario el código de acceso temporal no será válido.
- 3) Pulse  para activar el teclado + borrar las tarjetas RFID. Al pasar la tarjeta no coincidente 5 veces continuamente, el sistema se bloquea durante tres minutos y no puede funcionar. Cualquier tarjeta RFID puede desbloquear la puerta en estado de fábrica.
- 4) Vincular la cerradura en la APP
Vincular la cerradura en la APP a través de Bluetooth, haga clic en "desbloquear", entonces la hora del teléfono se sincronizará con la cerradura a través de Bluetooth.

