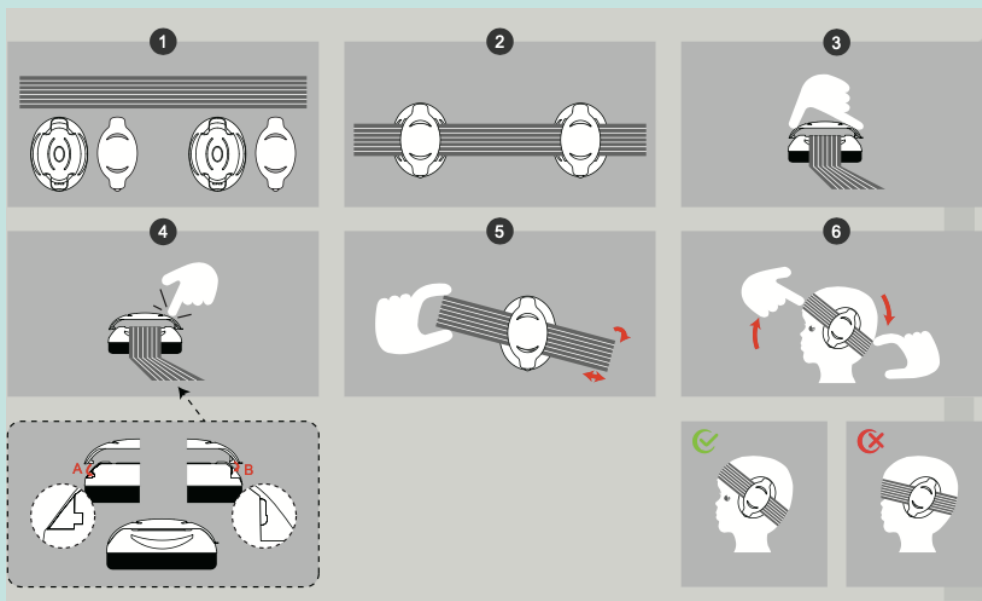


Mini+

by Schallwerk

MINI+

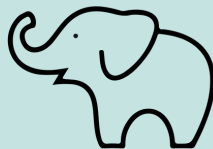


Baby+ Earmuffs

- Weight: 112 grams
- Declaration of Conformity:
www.schallwerk.eu

C € 2834

EN352-1: 2002 (EU) 2016/425



Baby+

by Schallwerk

SCHALLWERK Mini+ is a hearing protector especially designed and decorated for use by children but will fit all head sizes. Always use the earmuff under adult supervision. Never leave your child unattended, not even for a short time. Make sure you always have visibility on your child, check the position of the earmuffs and the comfort of your child regularly. The hearing of small children is very vulnerable. Loud noise and music can cause permanent hearing damage. Because of this, keep small children as much as possible away from situations and spaces with a lot of noise. Make sure to always wear the earmuffs in noisy environments. Excessive usage time can have adverse long term effects, e.g. due to the pressure on the head. Wear the SCHALLWERK Mini+ for a maximum of 90 minutes without a break, and approximately 3 hours per day in total.

When adjusting the headband, make sure it fits snugly but not too tight. The headband should keep the muffs in place, do not make it any tighter than needed. The heads of babies younger than 18 months are vulnerable because of the not yet closed fontanelles. The muffs should be placed on to the ears directly, without any obstructions (e.g. a hat). Check your child regularly to see if the muffs enclose the ears properly. Make sure the muffs stay in place. Be ware of the risk of pulling/sliding away, make sure the SCHALLWERK Mini+ never covers the mouth and/or nose. Keep an eye on your child at all times to see if he/she is comfortable. Do not let your child play with the SCHALLWERK Mini+ or stick parts of it in the mouth, it is not a toy. Don't let the child pull the inside foam out of the muffs and swallow it. Check the earmuffs regularly to ensure they are in proper working condition and store them in their original clean packaging. Earmuffs, and the pads especially, can wear out from use and should be checked for tears or leakage regularly. Putting covers over the earmuffs may influence their acoustic performance. Please note: always ensure adult supervision when used.

Material: Cover made from ABS, padding made from PVC+PU, headband made from polyester.

Weight: 112 grams.

Does not contain any metal parts. Clean the earmuffs with a damp cloth with lukewarm water and mild soap. Only soaps may be used that are not know to be harmful to the wearer. The headband can be washed in the washing machine. Some chemicals have a negative impact on the earmuffs. Not following the user manual instructions can severely harm the earmuff's service life and its protective capabilities. Protavis GmbH, is not liable for any resulting damage.

Please turn to the manufacturer for more information.

MINIMUM SOUND ATTENUATION

SNR=25dB H=31dB M=22dB L=15dB

Sound attenuation

Frequency [Hz]	Sound attenuation [dB]	Standard deviation [dB]	APV [dB]
125	14.7	3.7	11.0
250	14.8	3.0	11.8
500	22.7	3.9	18.8
1000	30.9	3.9	27.0
2000	32.6	2.2	30.3
4000	41.5	4.5	37.0
8000	37.7	4.9	32.8

Test Laboratory: Michael & Associates Inc.

Address: 2766 W. College Ave Suite 1, State college, PA 16801, USA

Testing date: 6/1/20-6/29/20



EN 352-1: 2002 (EU) 2016/425

Certification Notified Body:

CCQS Services Limited

Block 1 Blanchardstown Corporate Park,

Ballycoolin Road, Blanchardstown,

Dublin 15 D15 AKK1

Dublin

Ireland