

5 km / 20 km Long Range 802.11ac Wireless Bridges

Resilient solutions that overcome the challenges of rural areas and tricky terrain to supply stable, high-speed connectivity over vast distances

DAP-3711 / DAP-3712



High-Gain Directional Antenna

Fast, stable, and long-range wireless coverage



TDMA Technology

High speeds and consistent coverage that filters out interference



IP66 Rated

Water-resistant and dust-tight housing boasts a longer product life



PoE Ready

Power over Ethernet makes for a cleaner installation



8 kV Surge Protection

Your device and network are protected against unexpected surges, such as lightning



High-Speed Wi-Fi

Blazing speeds of up to 867 Mbps



Wi-Fi Security

128-bit personal and enterprise wireless encryption



Durable, Industrial Design

Modest yet resilient design endures external conditions while easily blending into surroundings



5 km / 20 km Long Range 802.11ac Wireless Bridges

DAP-3711 & DAP-3712

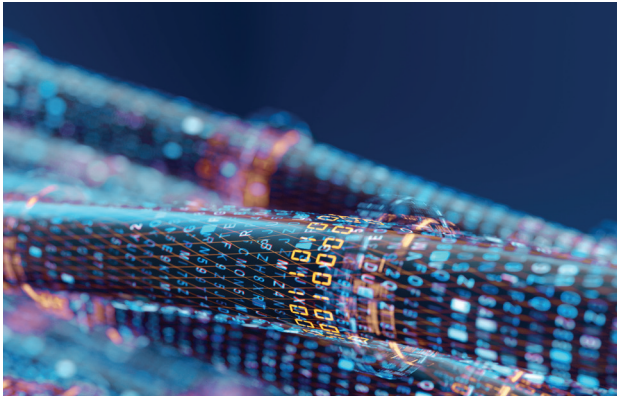
- The DAP-3711 & DAP-3712 feature high-gain 15 and 23 dBi directional antennas respectively, supplying high-speed, stable coverage to up to 20 km away
- Integrated TDMA Technology cuts through interference to ensure high-speed, consistent coverage
- Superior throughput with single-band transfer speeds of up to 867 Mbps
- Refined design effortlessly blends into any setting
- Stay secure with 128-bit personal and enterprise wireless encryption
- Support for Power over Ethernet means less wires, for cleaner and easier deployment
- The DAP-3711 and DAP-3712 both feature an IP66 rating, boasting water-resistant and dust-tight housings

The DAP-3711 & DAP-3712 are essential solutions in providing connectivity to previously believed impossible-to-reach areas. Industry leading core technologies, especially designed for long distance coverage, bring high-speed connectivity to rural areas and challenging terrain equivalent to that of a wired connection.

THE POWER TO DELIVER LONG-DISTANCE CONNECTIVITY

Long Range 802.11ac Wireless Bridges | DAP-3711 / DAP-3712





TDMA Technology Cuts Through the Chatter, Creating Even Stabler Coverage

The DAP-3711 & DAP-3712's transmission capabilities are augmented thanks to their integrated Time Division Multiple Access (TDMA). Everything works more efficiently on a schedule, and the DAP-3711 & DAP-3712 are no different: TDMA creates a schedule for multiple connected clients to work to. Senders and receivers get their own time slot for transmissions. This eliminates hidden node data collisions, in turn maximizing airtime efficiency, significantly cutting down interference and making for a highly scalable solution.



TDMA Protocol



Intelligent Rate Control



Cutting Edge Hardware Makes the Previously Impossible, Possible

The DAP-3711 & DAP-3712 feature state-of-the-art hardware, including high-gain 15 and 23 dBi directional antennas respectively. These powerful antennas effortlessly extend high-speed coverage to distances of up to 5 or 20 km away.



High-Gain Directional Antenna



Up to 867 Mbps



Discreet Deployment that's Hassle-Free with Power Over Ethernet (PoE)

Power sockets can be tricky to come by, especially in outdoor deployments. But PoE makes for easy installation and a simple, clean setup.

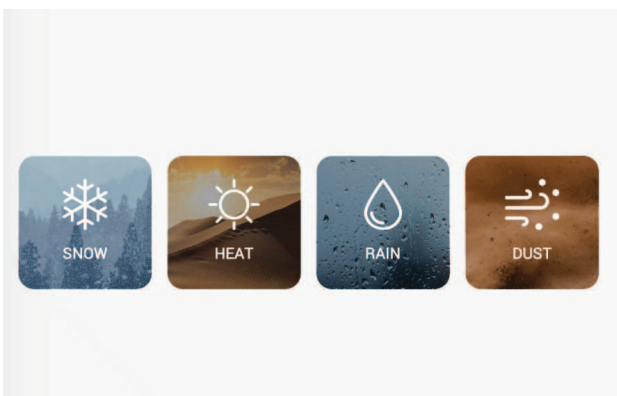
No need to run extra power lines, no added hassle when configuring your hardwiring, and no more cable clutter.



Unobtrusive Design



PoE for Easy Deployment



Form Without Sacrificing Function

It can be hard to look good while still being functional, yet these devices strike the balance just right. The DAP-3711's smooth case in crisp white makes for a low-key form, effortlessly fitting into any outdoor setting. Meanwhile the DAP-3712 features a compact dish form factor, effortlessly supplying long distance coverage.

Both devices boast an IP66 rating, meaning they fight dust and repel water for a longer product life.



8 kV ESD Protection



Water-Resistant and Dust-Tight



Technical Specifications

/ DAP-3711, DAP-3712

Model	DAP-3711	DAP-3712
Product Image		
General		
Device Interfaces	2 x 100/1000 Mbps Ethernet port, reset button	1 x 100/1000 Mbps Ethernet port, reset button
LEDs	Power, LAN, WLAN, signal strength	Signal strength
Antenna Type	Internal	Dish
Antenna Gain	15 dBi	23 dBi
Beamwidth	H: 40°, V: 15°	H: 10°, V: 10°
Standards	802.11a/n/ac	802.11a/n/ac
Protection	8 kV ESD Protection	8 kV ESD Protection
Enclosure	ABS, IP66 compliant	ABS, IP66 compliant
Functionality		
Operation Modes	AP, Station, WDS AP, WDS Station	AP, Station, WDS AP, WDS Station
Operating Frequency	5180~5320 MHz, 5745~5825 MHz	5180~5320 MHz, 5745~5825 MHz
Max. Transmit Power ¹	27 dBm	27 dBm
Wireless Speed	Up to 867 Mbps	Up to 867 Mbps
Bandwidth Support	20/40/80 MHz	20/40/80 MHz
Software		
Wireless Configuration	Auto channel support, transmit power selection, SSID broadcast enabling/disabling	Auto channel support, transmit power selection, SSID broadcast enabling/disabling
Security	802.11i 128-bit AES Personal / Enterprise	802.11i 128-bit AES Personal / Enterprise
System Tools	Ping, traceroute, NTP, ping watchdog, syslog, spectrum analyzer, throughput testing (lperf)	Ping, traceroute, NTP, ping watchdog, syslog, spectrum analyzer, throughput testing (lperf)
Smart Wireless Technology	TDMA, Auto ACK, intelligent rate control, co-channel interference avoidance	TDMA, Auto ACK, intelligent rate control, co-channel interference avoidance
Advanced Features	Max. station limit	Max. station limit
LAN Type	Static, DHCP	Static, DHCP
VLAN Support	Yes	Yes
Firewall	IP / MAC filter	IP / MAC filter
Monitors	Throughput, interfaces, routes table, bridge table, ARP table, AP information, syslog	Throughput, interfaces, routes table, bridge table, ARP table, AP information, syslog
Firmware Upgrade	Web-based upgrade	Web-based upgrade

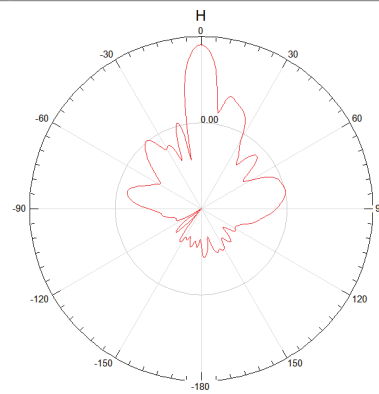
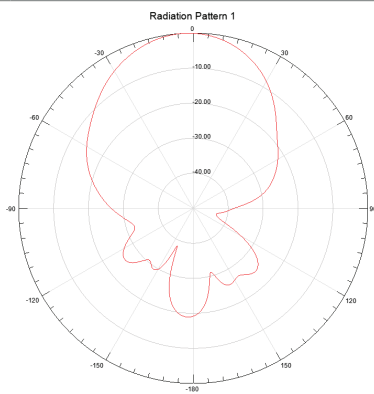
Technical Specifications

/ DAP-3711, DAP-3712

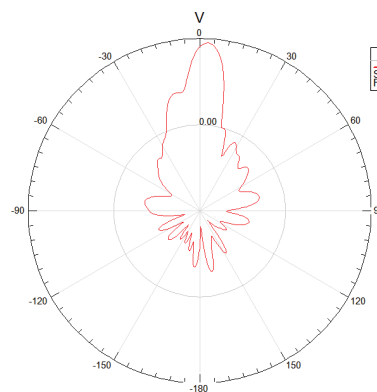
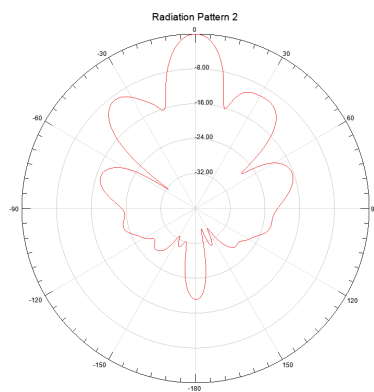
Model	DAP-3711	DAP-3712
Product Image		
Physical		
Power Input	PoE 24 V	PoE+ 48 V
Power Consumption	≤ 15 W	≤ 15 W
Operating Temperature	-40°C to 65°C	-40°C to 65°C
Storage Temperature	-40°C to 85°C	-40°C to 85°C
Operating Humidity	0% to 90%	0% to 90%
Storage Humidity	0% to 90%	0% to 90%
Weight	600 g (1.3 lbs)	900 g (2.0 lbs)
Dimensions	288 x 88 x 45 mm (11.3 x 3.4 x 1.8 in)	372 x 372 x 241 mm (14.6 x 14.6 x 9.5 in)
Certifications	CE, FCC	CE, FCC

Antenna Patterns

Horizontal



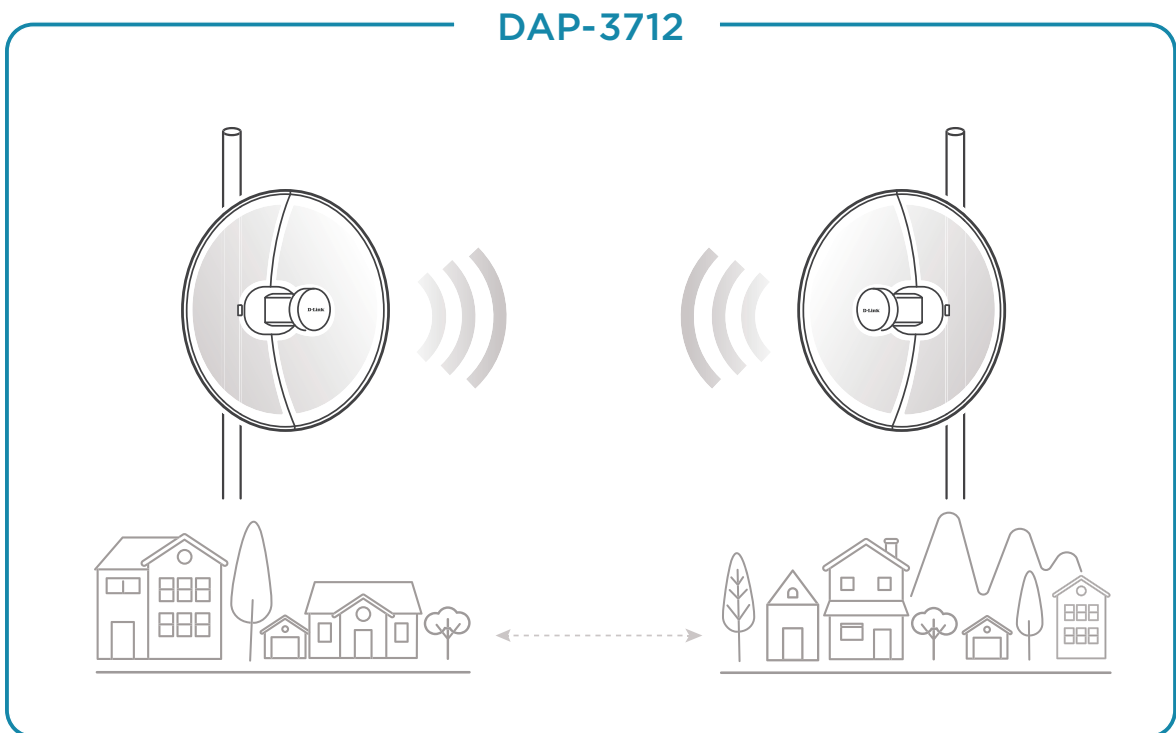
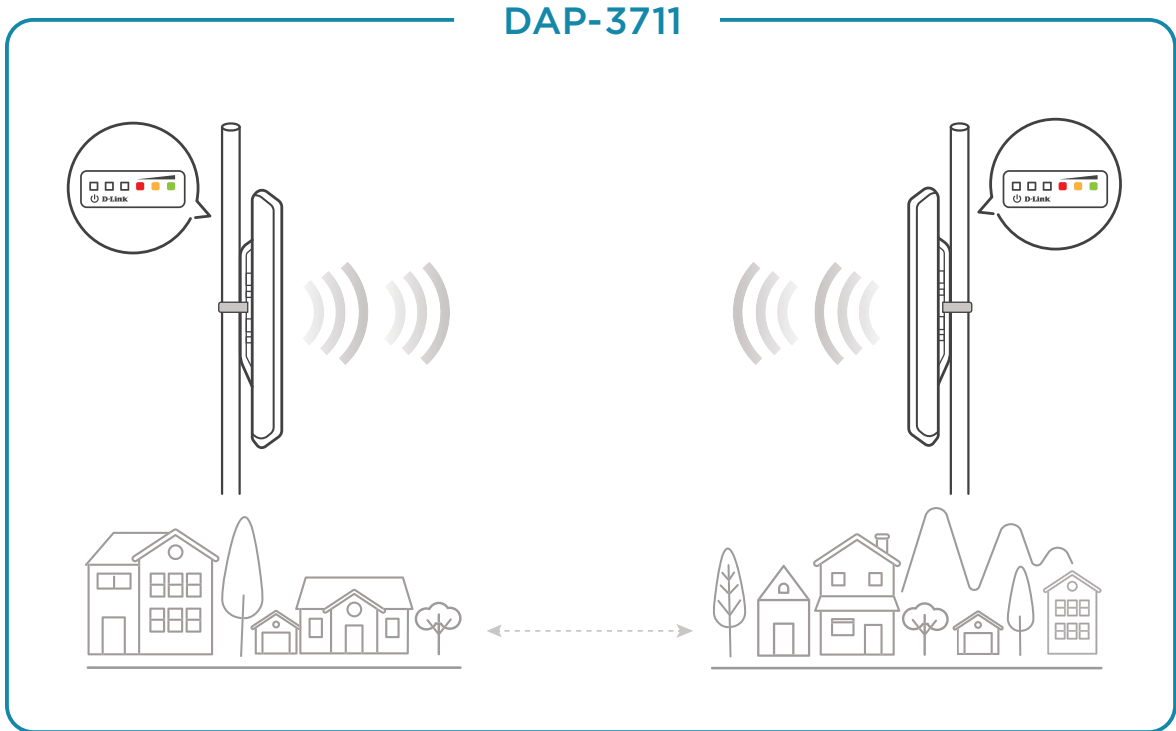
Vertical



Order Information

DAP-3711	5 km Long Range 802.11ac Wireless Bridge
DAP-3712	20 km Long Range 802.11ac Wireless Bridge

Topology / DAP-3711, DAP-3712



¹ Note that the maximum transmit power varies depending on the regulations of individual countries and jurisdictions.

Product specifications, size and shape are subject to change without notice, and actual product appearance may differ from that depicted on the package.

© 2020 D-Link. All Rights Reserved. D-Link and the D-Link logo are trademarks or registered trademarks of D-Link. All other third-party marks mentioned herein may be trademarks of their respective owners.