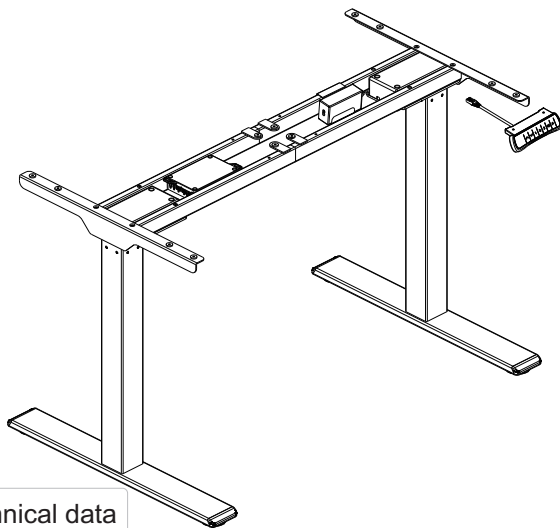


Item No.: FlexiDesk DM1 (weiß)

Installation guide



Technical data

Column Stage	2
Max. Weight Capacity	100 KG
Height Range	710 - 1200 mm (Without tabletop)
Width Range	1100 -1700 mm

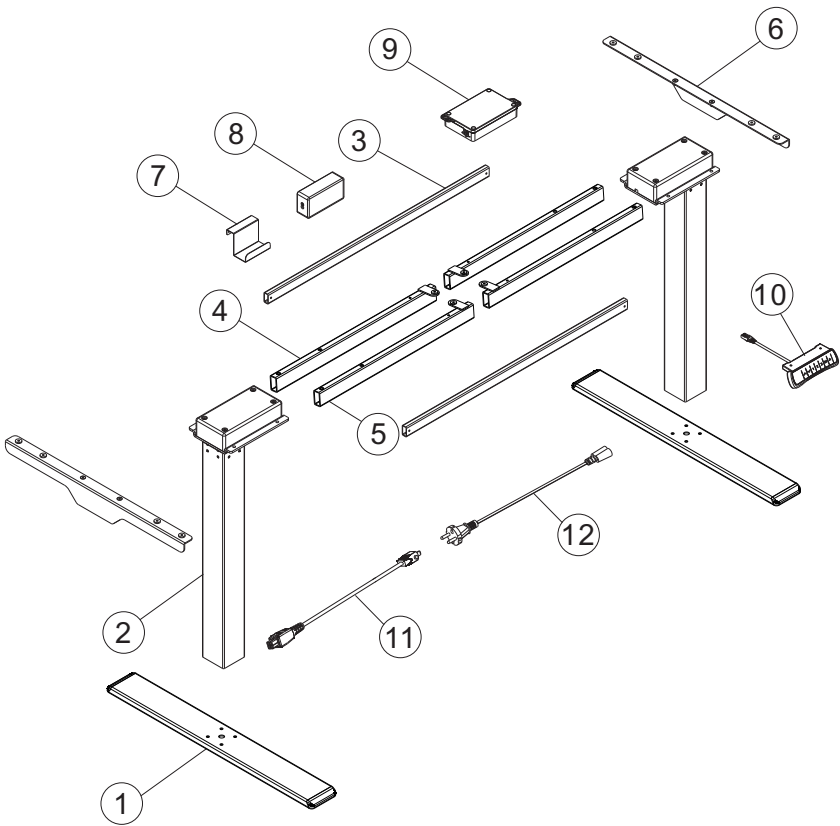
Accessory list

Attention: The drawings below are for guidance only and they may differ slightly from the product and fittings received. Please contact our customer service department if you have any queries.

No.	Image	Spec	Qty
A		M6	4
B		M6	8
C		M6	8
D		St4.2	6
E		Cable tie	6
F		St4.2	16
G		Allen Key 4 x 4 mm	1

Component list

No.	Part	Qty	No.	Part	Qty
①	Feet	2	②	Lifting column	2
No.	Part	Qty	No.	Part	Qty
③	Connection rod	2	④	Left supporting beam	2
No.	Part	Qty	No.	Part	Qty
⑤	Right supporting beam	2	⑥	Side bracket	2
No.	Part	Qty	No.	Part	Qty
⑦	Adapter arm	1	⑧	Adapter	1
No.	Part	Qty	No.	Part	Qty
⑨	Control box	1	⑩	Handset (Option)	1
No.	Part	Qty	No.	Part	Qty
⑪	Adapter cable	1	⑫	Power plug	1

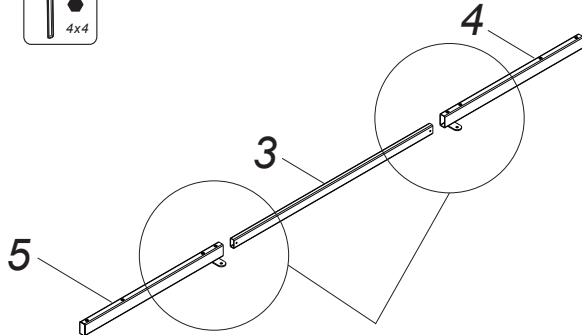
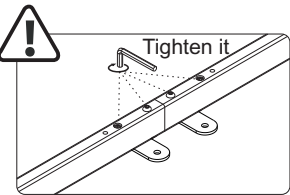


STEP 1

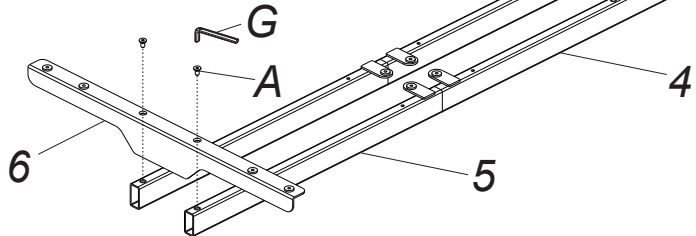
Install the supporting beam and the side bracket



! If the connecting rod cannot be inserted into the supporting beam, please loosen the screws on the beam.



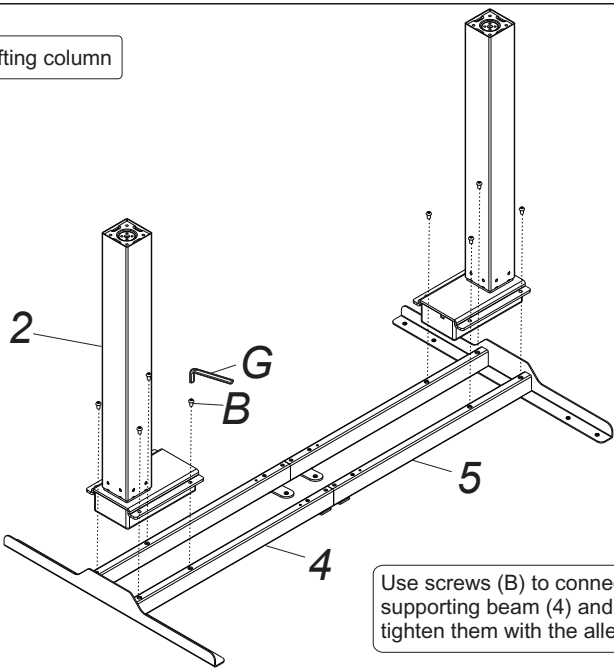
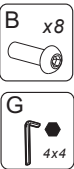
Connect the Connection rod (3) with the left supporting beam (4) and the right supporting beam (5), and tighten them with the allen key (G).



Use screws (A) to connect the side bracket (6) with the left supporting beam (4) and the right supporting beam (5), and tighten them with the allen key (G).

STEP 2

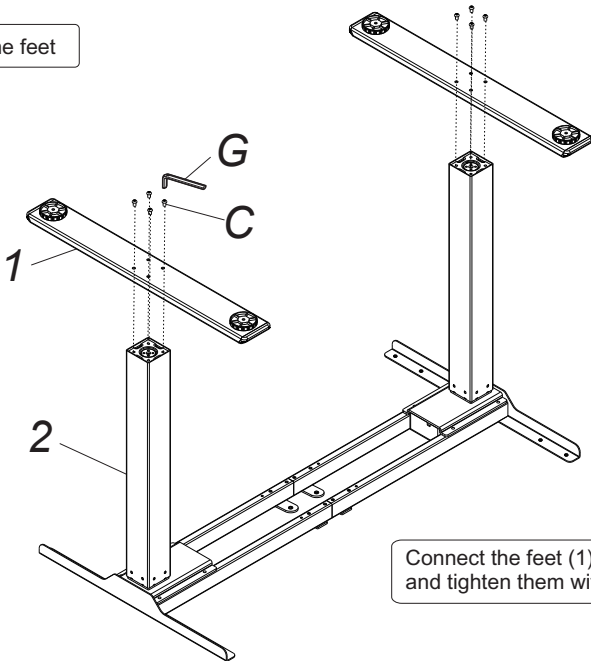
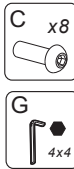
Install the lifting column



Use screws (B) to connect the lifting column (2) with the left supporting beam (4) and the right supporting beam (5), and tighten them with the allen key (G).

STEP 3

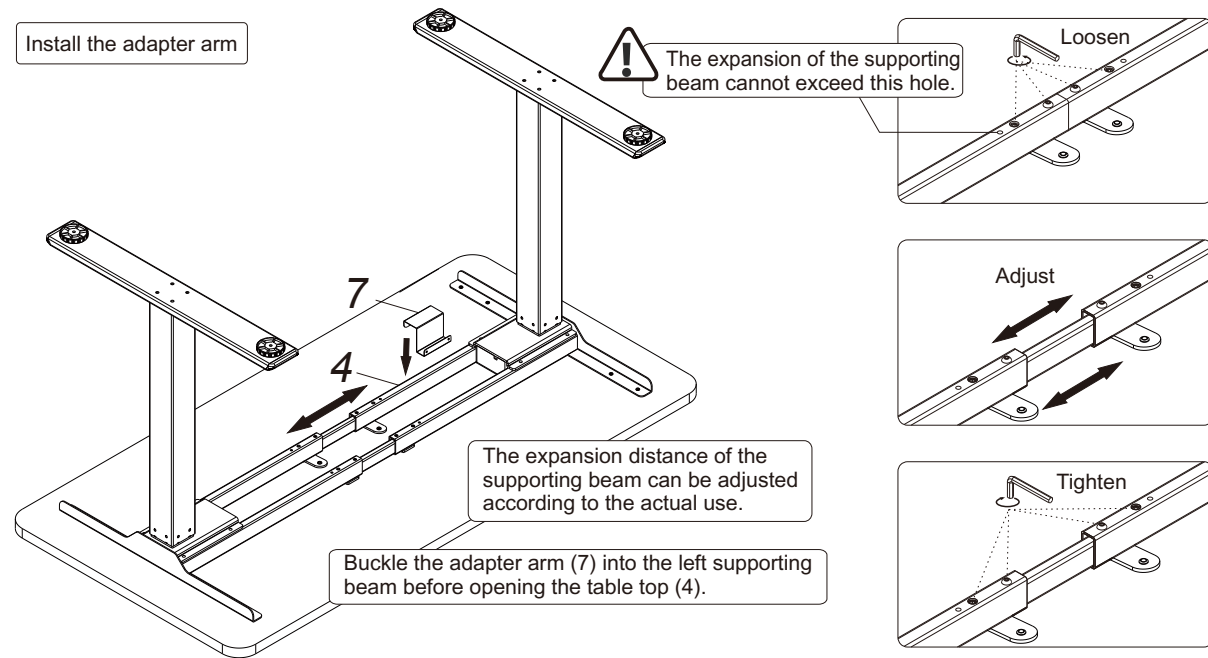
Install the feet



Connect the feet (1) and the lifting column (2) with screws (C), and tighten them with the allen key (G).

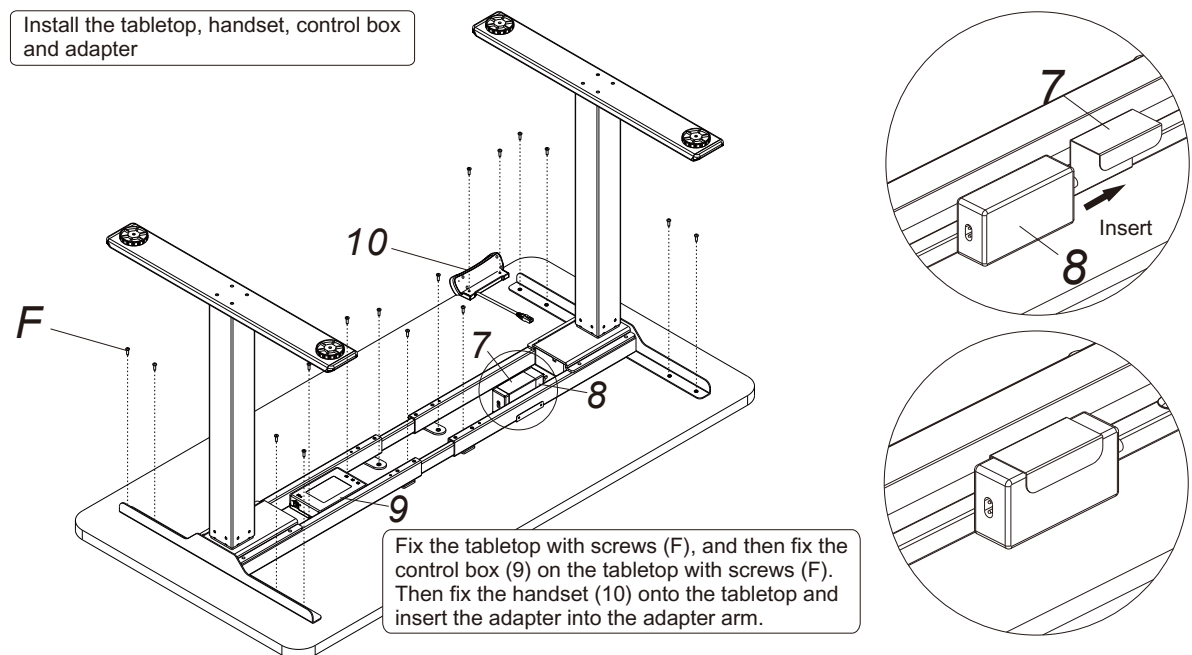
## STEP 4

Install the adapter arm



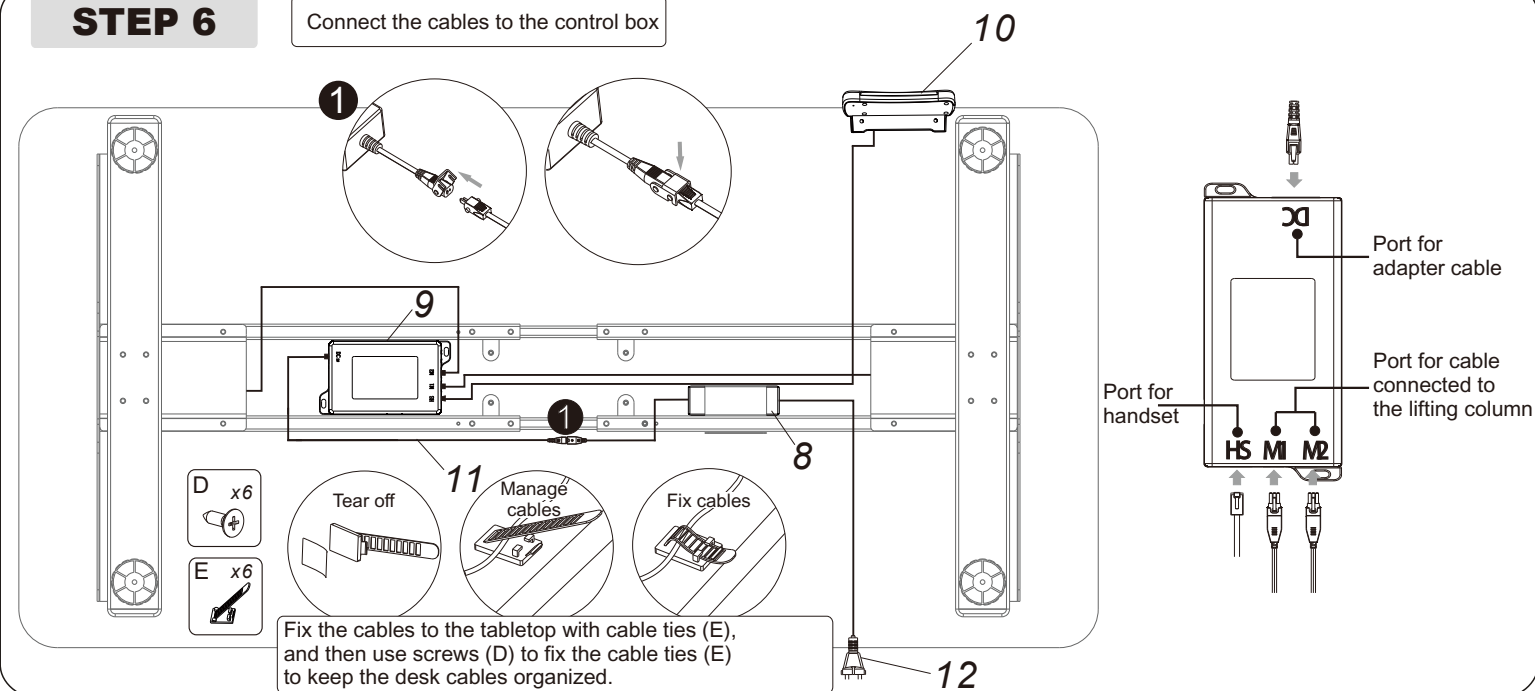
## STEP 5

Install the tabletop, handset, control box and adapter



## STEP 6

Connect the cables to the control box



### Common fault treatment

The following tips will help you to detect and eliminate the most common faults and errors. If the fault you met is not listed below, please contact your supplier. Only the manufacturer and professionals are capable of investigating and correcting these faults and errors.

Fault phenomenon	Method
No response after long pressing of the down arrow button after connecting with a power supply	1. Check if all the cables are connected well 2. Contact your supplier or retailer
No response after pressing the up arrow button/down arrow button after connecting with a power supply	1. Check if all the cables are connected well 2. Contact your supplier or retailer
Rising in a low speed	1. Check for overload, max. loading: 100 kg 2. Contact your supplier or retailer
The motor does not move as instructed	1. Contact your supplier or retailer
Downward movements only	1. Reposition 2. Contact your supplier or retailer
Downward sliding	1. Check for overload, max. loading: 100 kg 2. Contact your supplier or retailer
Frequent repositioning	1. Check for overload, max. loading: 100 kg 2. Contact your supplier or retailer
Overwork (Duty cycle: Max 2 min on / 18 min Off)	1. Please restart after suspending for 18 mins while connecting with power; 2. Contact your supplier or retailer;
Insufficient height range	1. Press "M" and "3" together for 3 seconds or more, after hearing continuous beeping twice, it will restore the factory settings 2. Contact your supplier or retailer



### Attention

1. Power supply: AC100V-240V, 50 / 60Hz
2. Service environment: 0 - 40 °C
3. Unplug the power plug before cleaning, wipe the dust on surface with slightly wet dishcloth when cleaning, be careful not to let any water drop into the internal parts, do not loose the connector
4. The electric box contains electronic components, metals, plastics, wires etc., so dispose of it in accordance with your country's environmental legislation, not in the general household waste.
5. Check carefully to ensure correct and complete assembly before using.
6. Be familiar with all functions and program settings of the product before first use.
7. Children are forbidden to play on the product because of unforeseen actions when playing. Neither the manufacturer nor the retailer are liable for any dangerous consequences caused by improper actions.
8. Slight noise caused by the V-ribbed belt or brake system due to structure will not have any effect on the use of the equipment.
9. Corrosive or abrasive materials must not be used to clean the equipment. You must ensure that the cleaner used will not pollute the environment.
10. This appliance can be used by children of age 8 and older and persons with reduced physical, sensory or mental capabilities or lack of experience and knowledge if they have been given supervision or instruction concerning use of the appliance in a safe way and understand the hazards involved. Children shall not play with the appliance.
11. Cleaning and user maintenance shall not be conducted by children without supervision.
12. If the supply cord is damaged, it must be replaced by the manufacturer, its service agent or a similarly qualified person in order to avoid a hazard.
13. Please make sure there are no hazard sources in your operating environment. e.g., do not litter the tools around. Always be careful to keep away the packaging materials from children, e.g. plastic bags may lead to a choking hazard for children.
14. If necessary, keep the packaging of the equipment for future use for transportation.

### Waste disposal



This marking indicates that this product should not be disposed with other household wastes. To prevent possible harm to the environment or human health from uncontrolled waste disposal, recycle it responsibly to promote the sustainable reuse of material resources. To return your used device, please use the return and collection systems or contact the retailer where the product was purchased. They can take this product for environmental safe recycling.