

1 2 3 4 5 6 7 8 9 10 11 12 13 14

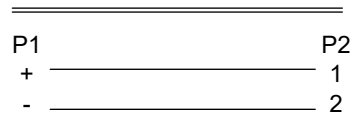
A

B

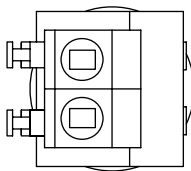
C

D

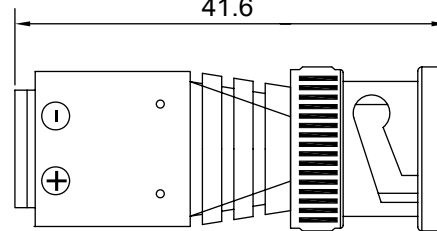
**Anschlussdiagramm / Wiring diagram**



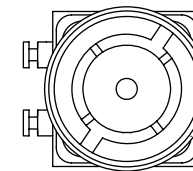
P1



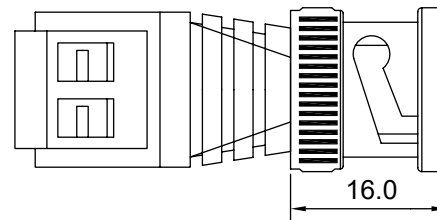
41.6



P2



16.0



A

B

C

D

E

F

G

H



**Terminal Block 2-pin > BNC-Stecker**

- für die schnelle Verdrahtung mit abisolierten Kabelenden
- für Testaufbauten, den Audio-Hobbybereich, DIY, die Alarmtechnik sowie den AV-Bereich
- Kontaktabstände: 5 mm

Anschlüsse: BNC-Stecker  
Terminal Block 2-pin  
Material BNC-Stecker: Zinklegierung, Kupfer, ABS  
vernickelt  
Material Terminal Block: ABS, Eisen  
Material Gehäuse: PVC

**Terminal Block 2-pin > BNC male**

- for fast wiring with stripped cable ends
- for test set-ups, audio purposes of hobbyists, DIY and alarm systems
- contact pitch: 5 mm

Connectors: BNC male,  
terminal block 2-pin  
Material BNC male: zinc alloy, copper, ABS,  
nickel-plated  
Material terminal block: ABS, iron  
Material molding: PVC

E

F

G


H

I

J

**Änderungen**

Datum	Name	gez.:	Datum	Name
		ir	10.08.2022	ir
		aw	10.08.2022	aw
		Norm:		
Änderungen vorbehalten / Subject to change				

Bezeichnung  
**TERMINAL ADAPTER BNC Plug male**   
 push-down  
 Zeichnungs-Nr.:  
**76750**

Blatt  
**1/1**  
 von

1 2 3 4 5 6 7 8 9 10 11 12 13 14

J