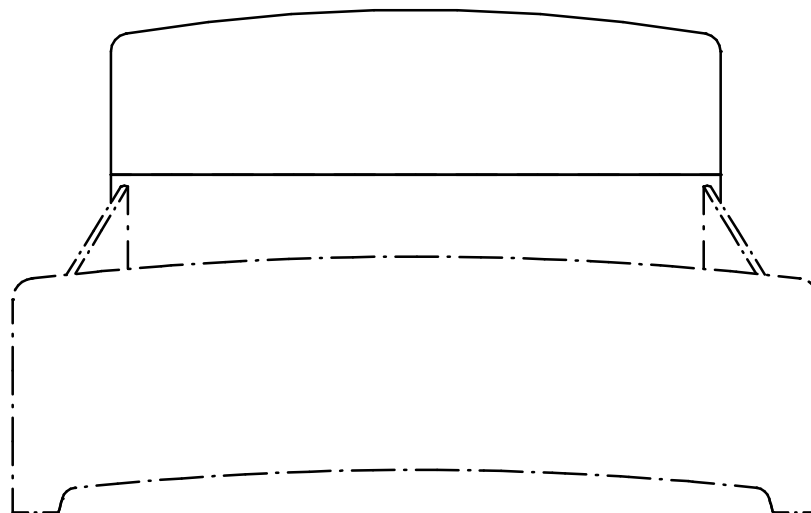
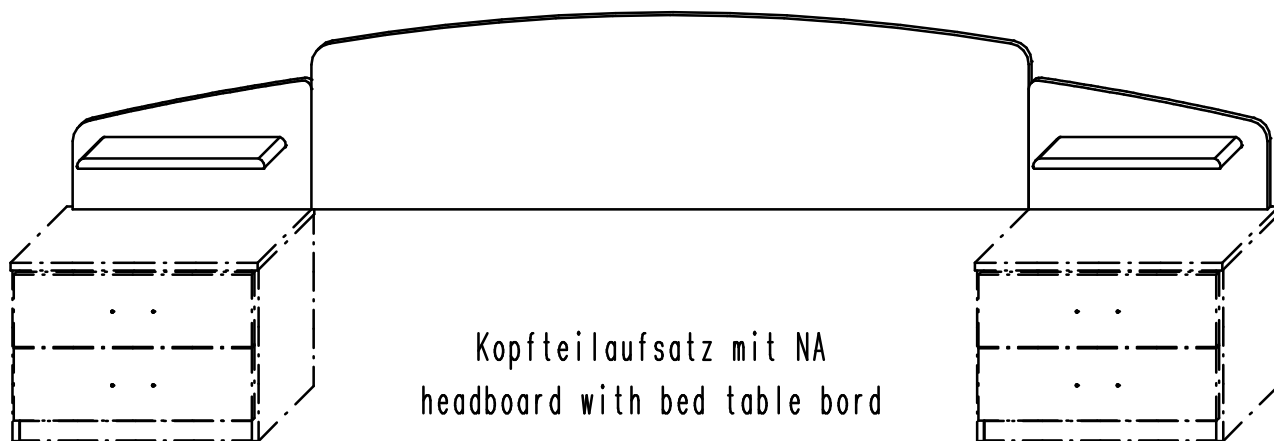


# Ersatzteilliste

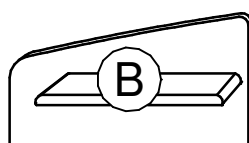
## Spare parts list



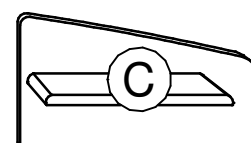
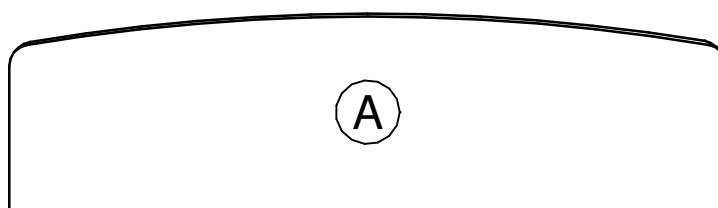
Kopfteilaufsatz ohne NA  
headboard without bed table bord



Kopfteilaufsatz mit NA  
headboard with bed table bord



Option

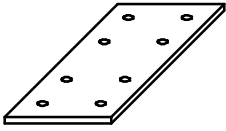


Option

# Ersatzteilliste

## Spare parts list

624.0092.000



①

6 x

631.1460.000

4 x 15 mm

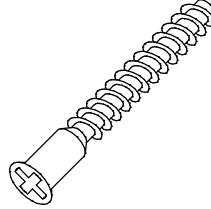


②

44 x

631.1201.000

7 x 50 mm



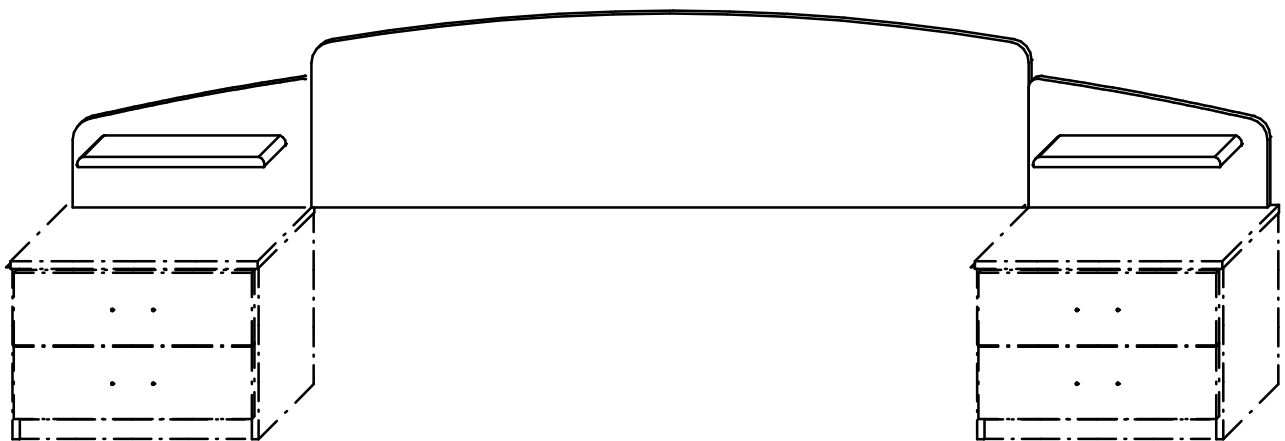
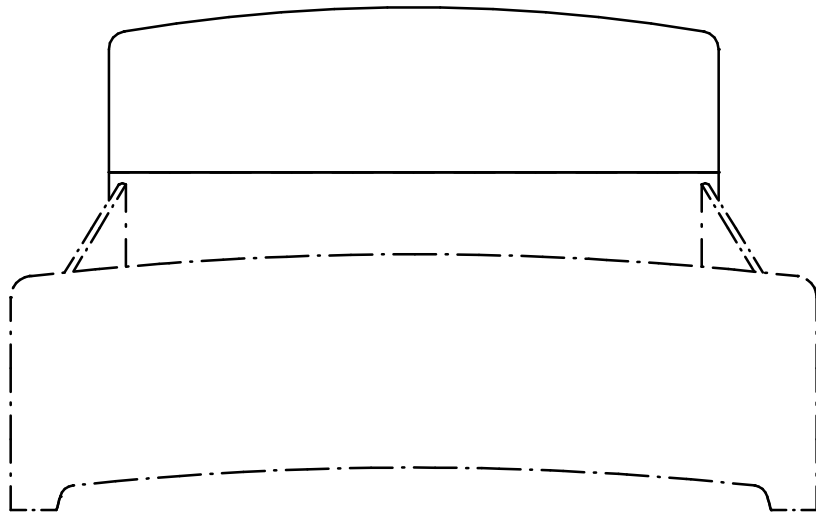
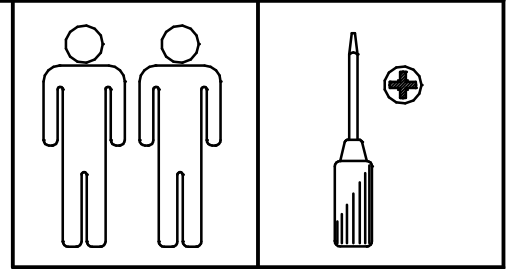
③

4 x



# Montageanleitung

## Assembly Instructions



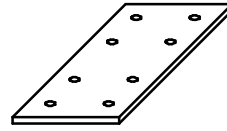
1.

Option

624.0092.000

631.1460.000

4 x 15 mm

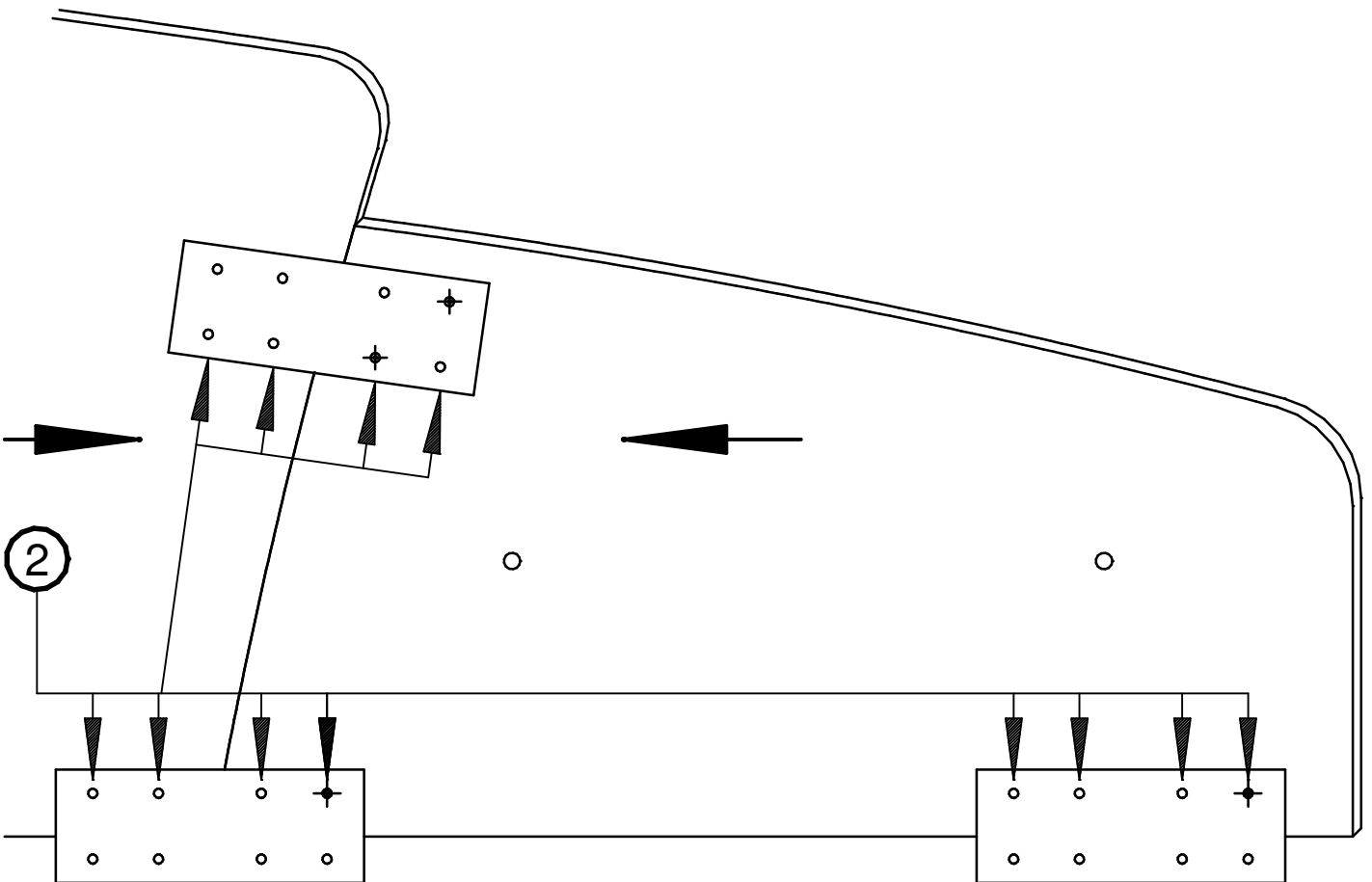
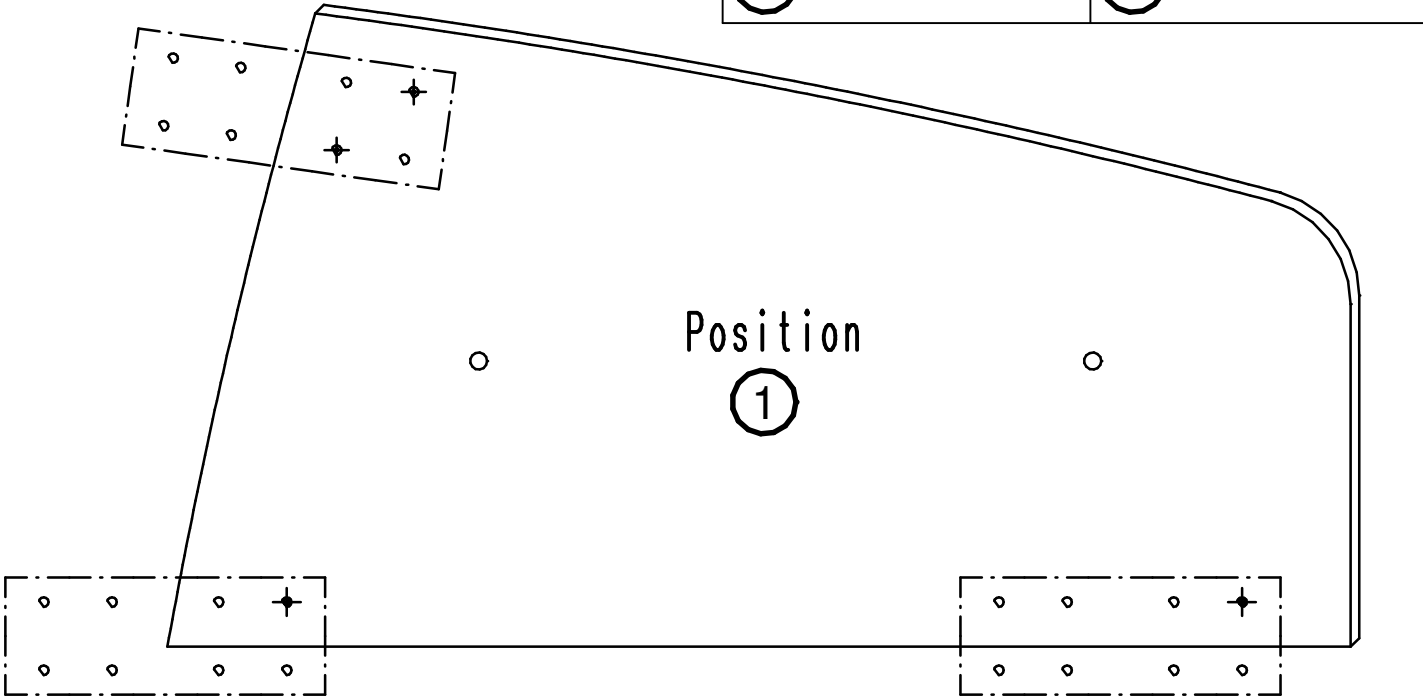


①

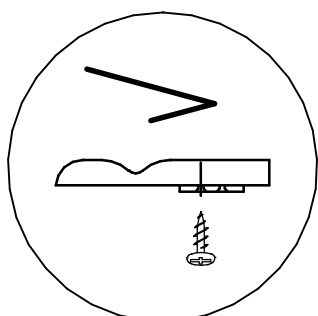
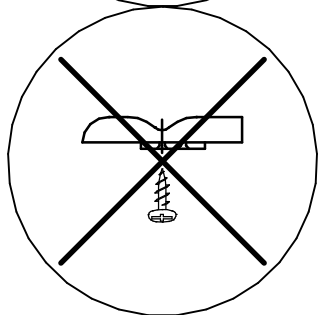
②

Position

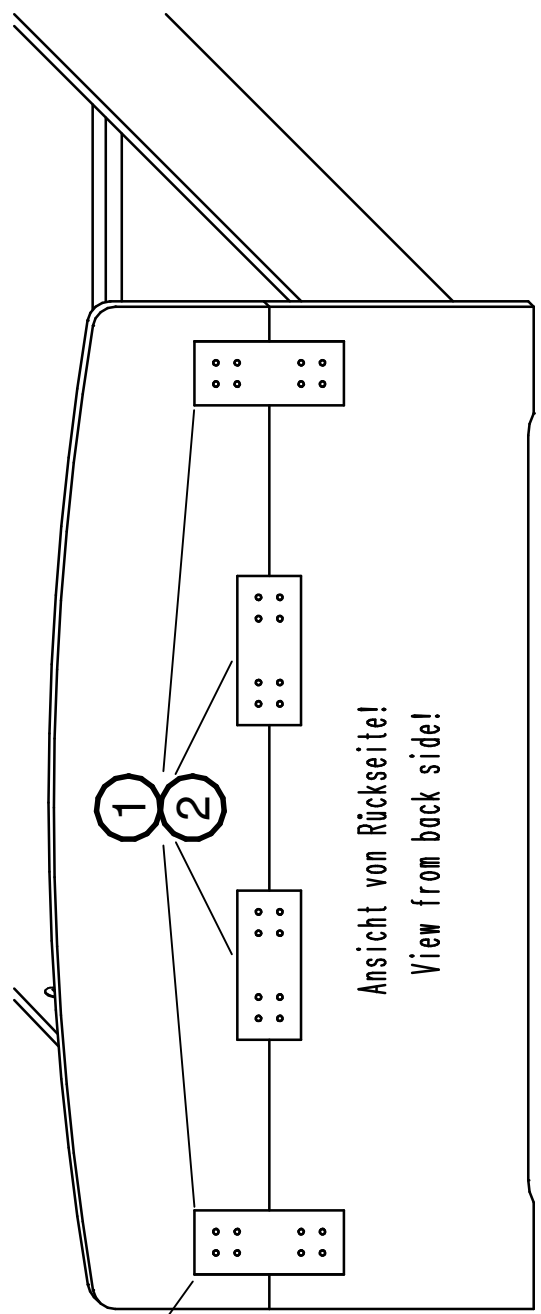
①



ACHTUNG! / ATTENTION!

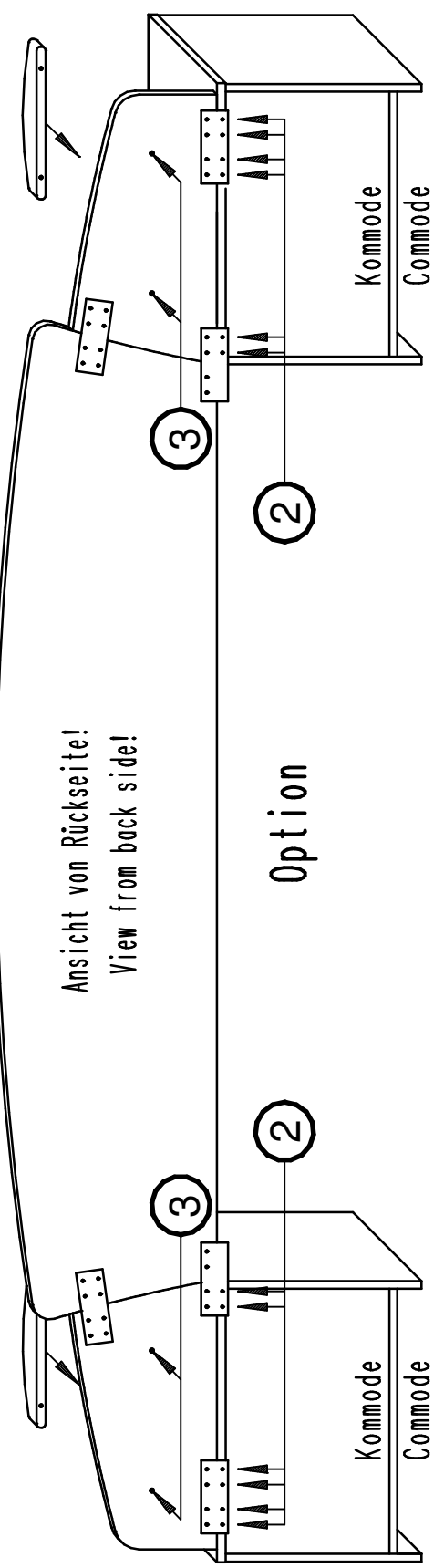


2.



631.1201  
7 x 50 mm

③



Panel mit Seitenteilen auf die Kommoden stellen. Um den richtigen Abstand der Kommode zu ermitteln, das Bettkopfteil zwischen die Kommoden stellen, das Paneel ausrichten/vermitteln und festschrauben. Place the panel with the side parts on the commodes. In order to determine the correct distance of the commode, place the head part of the bed between the commodes, align/centre the panel and screw tight.

---

Sollte trotz strenger Fertigungskontrollen ein Teil Grund zur Beanstandung geben, markieren Sie das entsprechende Teil auf dieser Aufbauanleitung und schicken diese per Fax an den Hersteller./

If a part gives a cause for complaint despite strict production controls, please mark the part in question on these instructions and send them by fax to the manufacturer.

Firma, Name/

Company, Name: .....

Strasse/

Street: .....

Ort/

Town: .....

Auftragsnummer/

Commission no.: .....

Ursache der Beanstandung bitte unbedingt angeben/

Please state the cause of complaint at all costs: .....

.....

