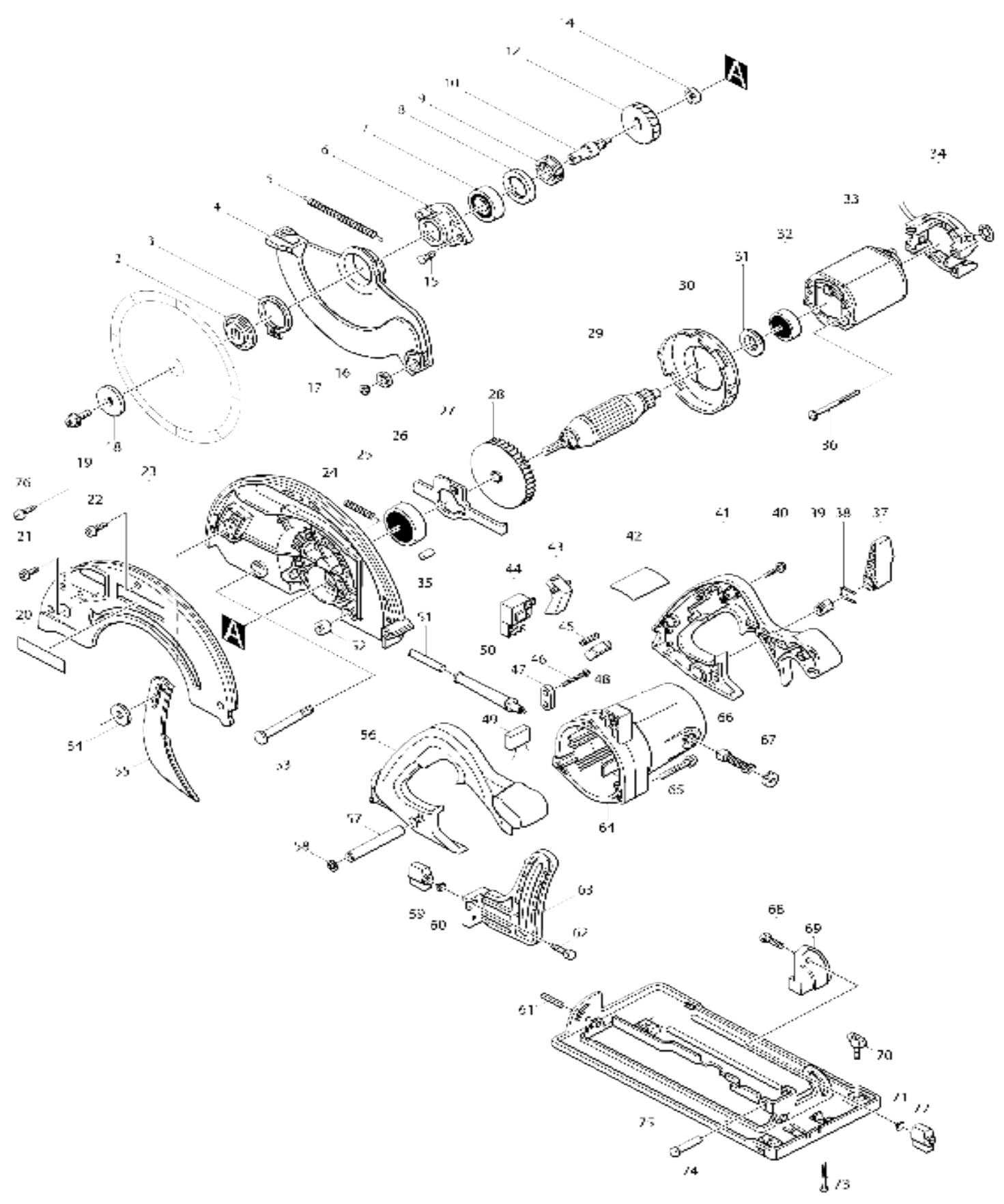


Model No.5603R CIRCULAR SAW 165MM



Model No.5603R CIRCULAR SAW 165MM

| Item No. | Parts No. | Description | Interchangability | Q'ty | New/Old | Note1 | Note2 |
|----------|-----------|--------------------------------|-------------------|------|---------|-------|-------|
| 002 | 224311-1 | INNER FLANGE 40 | | 1 | * | | |
| 002-1 | 224340-4 | INNER FLANGE 40 | X | 1 | | | |
| 003 | 961156-3 | RETAINING RING S-40 | | 1 | | | |
| 004 | 316598-0 | SAFETY COVER | | 1 | * | | |
| 004-1 | 316598-0 | SAFETY COVER | O | 1 | | | |
| 005 | 231797-2 | TENSION SPRING 4 | | 1 | * | | |
| 005-1 | 231844-9 | TENSION SPRING 4 | < | 1 | | | |
| 006 | 316683-9 | BEARING BOX | | 1 | * | | |
| 006-1 | 316884-9 | BEARING BOX | X | 1 | * | | |
| 006-2 | 317469-4 | BEARING BOX | S | 1 | | | |
| 007 | 211129-9 | BALL BEARING 6201DDW | | 1 | * | | |
| 007-1 | 211227-9 | BALL BEARING 6002DDW | X | 1 | * | | |
| 007-2 | 211236-8 | BALL BEARING 6002DDW | O | 1 | | | |
| 008 | 267126-3 | FLAT WASHER 22 | | 1 | | | |
| 009 | 285831-0 | BEARING RETAINER 19-34 | | 1 | | | |
| 010 | 322675-8 | SPINDLE | | 1 | * | | |
| 010-1 | 322922-7 | SPINDLE | X | 1 | | | |
| 011 | 254011-9 | WOODRUFF KEY 4 | | 1 | * | | |
| 012 | 226425-2 | HELICAL GEAR 41 | | 1 | * | | |
| 012-1 | 226474-9 | HELICAL GEAR 41 | X | 1 | | | |
| 013 | 267118-2 | FLAT WASHER 6 | | 1 | * | | |
| 014 | 211019-6 | BALL BEARING 626 | | 1 | * | | |
| 014-1 | 211034-0 | BALL BEARING 608 | X | 1 | | | |
| 015 | 265034-2 | + COUNTERSUNK HEAD SCREW M5X16 | | 2 | * | | |
| 015-1 | 265D49-3 | +COUNTERSUNK HEAD SCREW M5X16 | O | 2 | * | | |
| 015-2 | 265034-2 | + COUNTERSUNK HEAD SCREW M5X16 | O | 2 | | | |
| 016 | 415438-0 | ROLLER 20 | | 2 | | | |
| 017 | 415437-2 | ROLLER PIN 6 | | 2 | | | |
| 018 | 224306-4 | OUTER FLANGE 40 | | 1 | * | | |
| 018-1 | 224338-1 | OUTER FLANGE 40 | X | 1 | | | |
| 019 | 266024-8 | HEX. SOCKET HEAD BOLT M6X20 | | 1 | * | | |
| 019-1 | 266139-1 | HEX. SOCKET HEAD BOLT M6X16 | X | 1 | | | |
| 020 | 819064-1 | MAKITA MARK | | 1 | | | |
| 021 | 922312-0 | HEX. SOCKET HEAD BOLT M6X12 | | 1 | | | |
| 022 | 266042-6 | TAPPING SCREW BIND CT 4X20 | | 3 | | | |
| 023 | 316687-1 | BLADE CASE COVER | | 1 | * | | |
| 023-1 | 316687-1 | BLADE CASE COVER | O | 1 | | | |
| 024 | 152477-6 | BLADE CASE COMPLETE | | 1 | * | | |
| 024 | | INC. 35 | | | * | | |
| 024-1 | 152547-1 | BLADE CASE COMPLETE | X | 1 | * | | |
| 024-1 | | INC. 35 | | | * | | |
| 024-2 | 152547-1 | BLADE CASE COMPLETE | O | 1 | | | |
| 024-2 | | INC. 35 | | | | | |
| 025 | 233092-6 | COMPRESSION SPRING 5 | | 1 | | | |
| 026 | 211129-9 | BALL BEARING 6201DDW | | 1 | | | |

| | | | | | | |
|-----------|----------|----------------------------------|---|---|---|--|
| 027 | 344114-8 | SHAFT LOCK | | 1 | | |
| 028 | 241876-8 | FAN 76 | | 1 | | |
| 029C_ | 516223-5 | ARMATURE ASS'Y 220V | | 1 | | |
| 029C_ | | INC. 26,28,31,32 | | | | |
| 030 | 415503-5 | BAFFLE PLATE | | 1 | | |
| 031 | 681625-5 | INSULATION WASHER | | 1 | | |
| 032 | 211031-6 | BALL BEARING 608LLB | | 1 | * | |
| 032-1 | 210005-4 | BALL BEARING 608DDW | X | 1 | | |
| 033C_ | 634233-1 | FIELD 220V | | 1 | | |
| 034 | 632503-2 | SUPPORT COMPLETE | | 1 | * | |
| 034-1 | 135793-1 | SUPPORT ASS'Y | X | 1 | | |
| C10 | 654020-2 | RING TERMINAL | | 2 | | |
| C20 | 654501-6 | CONNECTOR P-1.25 | | 2 | | |
| 035 | 263005-3 | RUBBER PIN 6 | | 1 | | |
| 036A_ | 266110-5 | TAPPING SCREW FLANGE PF5X60 | | 2 | * | |
| 036A1 | 266044-2 | TAPPING SCREW 5X60 | O | 2 | | |
| 037 | 272230-5 | LEVER 54 | | 1 | | |
| 038 | 231955-0 | RING SPRING 12 | | 1 | | |
| 039 | 252134-7 | HEX. NUT M8 | | 1 | | |
| 040A_ | 266111-3 | TAPPING SCREW FLANGE PF 5X2 5 | | 5 | * | |
| 040A1 | 266041-8 | TAPPING SCREW 5X25 | O | 5 | | |
| 041 | 182675-8 | HANDLE SET | | 1 | | |
| 041 | | INC. 56 | | | | |
| 042A_ | 858231-3 | NAME PLATE 5603R | | 1 | | |
| 043 | 415439-8 | SWITCH LEVER | | 1 | | |
| 044 | 651922-3 | SWITCH TG71B | | 1 | | |
| 045 | 231230-4 | COMPRESSION SPRING 4 | | 1 | | |
| 046A_ | 266121-0 | TAPPING SCREW FLANGE PF 4X1 8 | | 2 | * | |
| 046A1 | 265995-6 | TAPPING SCREW 4X18 | O | 2 | | |
| 047B_ | 687063-9 | CORD CLAMP | | 1 | * | |
| 047B1 | 687052-4 | STRAIN RELIEF | X | 1 | | |
| 048 | 415440-3 | LOCK-OFF BUTTON | | 1 | | |
| 049B_ | 645118-6 | NOISE SUPPRESSOR | | 1 | * | |
| 049B1 | 645142-9 | NOISE SUPPRESSOR | O | 1 | | |
| 050A_ | 682540-6 | CORD GUARD 9.3-90 | | 1 | | |
| 051M - | 665865-3 | POWER SUPPLY CORD 1.0-2-2.5 | | 1 | | |
| 052 | 262511-5 | RUBBER SLEEVE 6 | | 1 | | |
| 053 | 266019-1 | CAP SQUARE NECK BOLT M8X98 | | 1 | | |
| 054 | 253783-3 | FLAT WASHER 6 | | 1 | | |
| 055 | 165093-5 | RIVING KNIFE | | 1 | | |
| 056 | 182675-8 | HANDLE SET | | 1 | | |
| 056 | | INC. 41 | | | | |
| 057 | 331432-3 | PIPE 9 | | 1 | | |
| 058 | 941201-0 | FLAT WASHER 8 | | 1 | | |
| 059 | 252624-0 | WING NUT M6 | | 1 | | |
| 060 | 941151-9 | FLAT WASHER 6 | | 1 | | |
| 061 | 951204-6 | SPRING PIN 6-16 | | 1 | | |
| 062 | 921332-1 | HEX. BOLT M6X20 | | 1 | | |
| 063 | 316597-2 | DEPTH GUIDE | | 1 | | |
| | | | | | | |

| | | | | | | | |
|-------|----------|------------------------------|---|---|---|--|--|
| 064 | 159714-9 | MOTOR HOUSING COMPLETE | | 1 | | | |
| C10 | 643754-2 | BRUSH HOLDER | | 2 | * | | |
| C11 | 643708-9 | BRUSH HOLDER 5-11 | O | 2 | | | |
| 065 | 911278-9 | PAN HEAD SCREW M5X55 | | 3 | | | |
| 066 | 191963-2 | CARBON BRUSH CB-303 | | 1 | * | | |
| 066-1 | 194996-6 | CARBON BRUSH SET CB-303 | O | 1 | | | |
| 067 | 643750-0 | BRUSH HOLDER CAP 7-11 | | 2 | | | |
| 068 | 921332-1 | HEX. BOLT M6X20 | | 1 | | | |
| 069 | 415443-7 | ANGULAR PLATE GUIDE | | 1 | | | |
| 070 | 251887-5 | SCREW M6X10 | | 1 | * | | |
| 070-1 | 265725-5 | WING BOLT M6X10 | O | 1 | | | |
| 071 | 941151-9 | FLAT WASHER 6 | | 1 | | | |
| 072 | 252624-0 | WING NUT M6 | | 1 | | | |
| 073A_ | 266121-0 | TAPPING SCREW FLANGE PF 4X18 | | 2 | * | | |
| 073A1 | 265995-6 | TAPPING SCREW 4X18 | O | 2 | | | |
| 074 | 256690-9 | PIN 10 | | 1 | | | |
| 075 | 163358-9 | BASE | | 1 | * | | |
| 075-1 | 163358-9 | BASE | O | 1 | | | |
| 076 | 266026-4 | TAPPING SCREW BIND CT 4X12 | | 2 | | | |
| 077 | 213560-5 | O RING 44 | | 1 | | | |
| A01 | 165108-8 | GUIDE RULE | | 1 | | | |
| A02 | 783203-8 | HEX. WRENCH 5 | | 1 | | | |
| A03 | B-02917 | T.C.T.SAW BLADE 165MM | | 1 | | | |
| E03 | 192420-3 | JOINT | | 1 | | | |
| C10 | 266026-4 | TAPPING SCREW BIND CT 4X12 | | 2 | | | |
| E04 | 824606-8 | PLASTIC CARRYING CASE | | 1 | * | | |
| C10 | 183336-3 | LATCH SET | | 1 | * | | |
| E04-1 | 824964-2 | PLASTIC CARRYING CASE | S | 1 | | | |
| C10 | 162271-8 | LATCH | | 2 | | | |
| C20 | 450990-1 | HANDLE | | 1 | | | |
| E05 | 837704-9 | INNER TRAY | S | 1 | | | |
| F01 | 199140-0 | GUIDE RAIL 1000 SET | | 1 | | | |
| F03 | 192505-5 | GUIDE RAIL ADAPTER | | 1 | | | |
| F04 | 192516-0 | GUIDE RAIL | | 0 | | | |
| F05 | 199141-8 | GUIDE RAIL 1500 SET | | 1 | | | |
| F06 | 194368-5 | GUIDE RAIL 1400 SET | | 1 | | | |
| F07 | 194925-9 | GUIDE RAIL 1900 SET | | 1 | | | |
| F08 | 194367-7 | GUIDE RAIL 3000 SET | | 1 | | | |
| F09 | 194416-0 | SHEET 10000 SET | | 1 | | | |
| F10 | 194417-8 | RUBBER SHEET 10000 SET | | 1 | | | |
| F11 | 194418-6 | POSITION SHEET 1400 SET | | 1 | | | |
| F12 | 194910-2 | POSITION SHEET 1900 SET | | 1 | | | |

Please state Parts No. when your order.

Print Date 02/10/2024