

QUICK USER MANUAL

LAUNDRY COMES OUT DAMP AFTER THE DRYING PROCESS



Hot laundries which come out after the drying process might be felt more damp than they really are.

- **The programme used might not be suitable for the type of laundry.**

Check the care labels on the laundry items, select a suitable programme for the type of laundry and additionally, use the time programmes.

- **The surface of the lint filter might be clogged.**

Wash the filter with lukewarm water.

- **The heat exchanger might be clogged.**

Clean the heat exchanger.

- **The dryer might be overloaded with laundry.**

Do not overload the dryer.

- **The laundry might be insufficiently spun.**

Select a higher spin speed on your washing machine.

- **There might be a layer of lime on the humidity sensor.**

Clean the humidity sensor.

SUITABLE FOR DRYING IN A DRYER



Suitable for
drying in a
dryer



At high
temperatures



At medium
temperatures



At low
temperatures

NOT SUITABLE FOR DRYING IN A DRYER

Not suitable
for drying in
a dryer



Hang wet
to dry



Hang to dry




Spread to dry



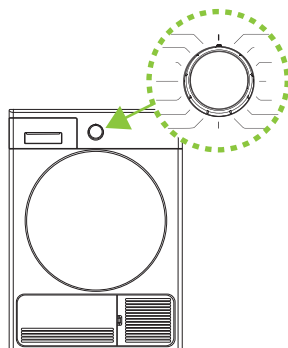
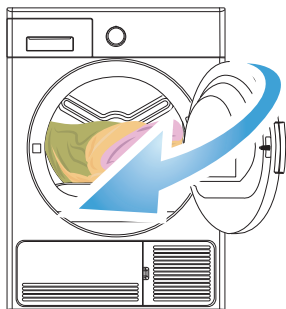
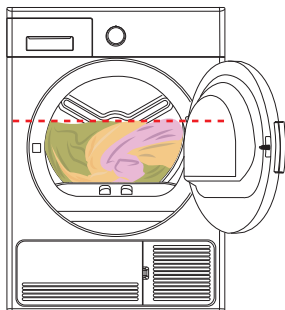
Follow the instructions on the labels of the laundry to be dried. Only dry items that have a statement/symbol that indicates "they can be dried in a dryer".

PROGRAMME SELECTION TABLE *

Programme	Laundries
Cotton Extra Cupboard Dry  Iron Dry	Cotton towels, bedsheets, pillowcases, bathrobes, etc.
Synthetics Cupboard Dry Iron Dry	Synthetics such as shirts, t-shirts, blouses, etc.
Time Programmes 20' / 40' / 60'	To reach the required drying level or for 1-2 pieces of laundry, you can use the timed programmes of 20 min., 40 min., and 60 min.
Special Programmes Delicate Anticrease Baby Care Jeans	Delicate : Shirts, blouses and silk garments. Anticrease : For Cotton and synthetic laundries. Baby Care : Delicate drying for infant clothes. Jeans : Jean clothes.
Rapid Programmes** Express 34' Shirts 20'	Express 34' : 1kg of cotton shirts spun at a high speed in the washing machine are dried in 34 minutes. Shirts 20' : 2 to 3 shirts are ready for to be ironed in 20 minutes.

(*) Please check the Programme Selection and Consumption Table (5.2) in the instruction book (**) The duration for rapid programs are only valid for clothes which are spun at 1200 rpm.

QUICK USER MANUAL



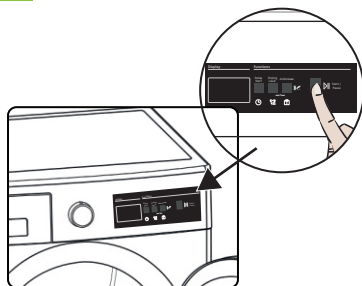
It is not recommended to load the dryer with more laundry than the amount shown in the figure. When overloaded, the drying performance of the dryer will decrease and the dryer and laundry might be damaged.

1

Separate your clothes according to their types, place into the machine and close the door.

2

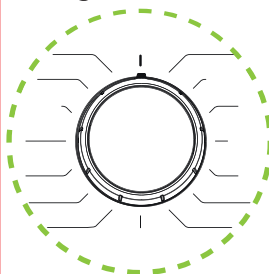
Select the suitable programme for your laundry by rotating the adjustment knob.



3

Run the programme by pushing Start/pause button.

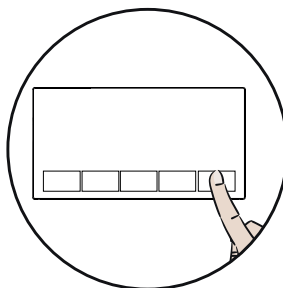
Programme Selection Knob *



Use the programme selection knob to select the desired drying programme.

Note: Please read instruction book for detailed informations.

Electronic Additional Functions *



- You can select additional functions for drying.
- You can run the programme by pushing Start/pause button.

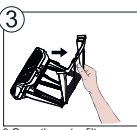
QUICK USER MANUAL

CLEANING AND CARE

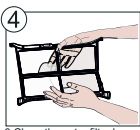
To clean the lint filter:



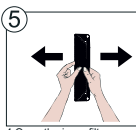
1. Open the loading door.
2. Pull up the lint filters to remove it.



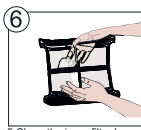
3. Open the outer filter.



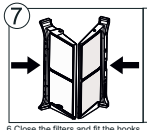
3. Clean the outer filter by your hands or using a soft cloth.



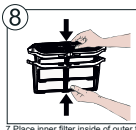
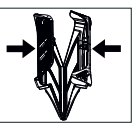
4. Open the inner filter.



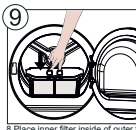
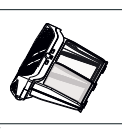
5. Clean the inner filter by your hands or using a soft cloth.



6. Close the filters and fit the hooks.



7. Place inner filter inside of outer filter.

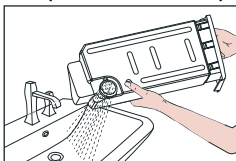
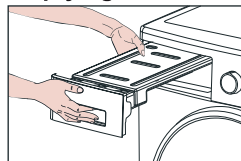


8. Place inner filter inside of outer filter.



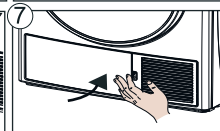
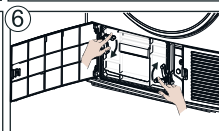
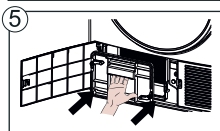
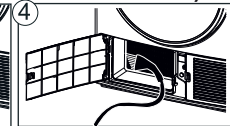
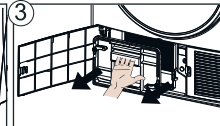
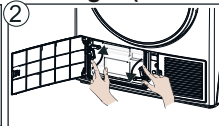
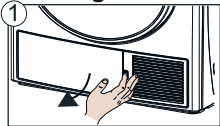
After the dryer has been used for a certain period of time, if you encounter a layer that will cause obstruction on the filter with warm water to clean the layer. Dry the filter thoroughly before reinstalling it again.

Emptying the Water Tank (After each use)



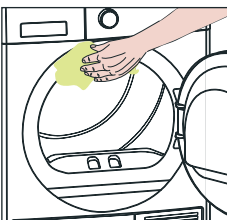
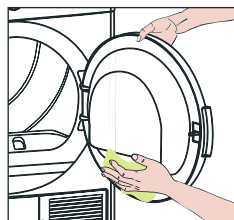
1. Pull the drawer cover and carefully take out the tank.
2. Empty the water in the tank.
3. If there is lint accumulated on the discharge cap in the tank, clean it with water.
4. Refit the water tank.

Cleaning The Heat Exchanger (AFTER EVERY 30 USE OR ONCE A MONTH)



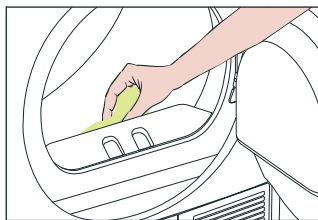
1. Open the plinth and release the 2 cover locks of the heat exchanger cover.
2. Release the heat exchanger cover as shown.
3. Clean the front surface of the heat exchanger by using a vacuum cleaner
4. Refit the heat exchanger cover as shown.
5. Close the plinth cover

Cleaning the Inner Surface of the Loading Door (After each use)



Open the loading door of the dryer and clean all of the inner surfaces and the gasket with a soft, damp cloth.

Cleaning the Humidity Sensor (4 times a year)



1. Open the loading door of the machine.
2. If the machine is still hot due to the drying process, wait for it to cool down.
3. Using a soft cloth soaked in vinegar, wipe the metal surfaces of the sensor and dry them.

INFORMATIONS, WARNINGS AND ECONOMIC USE

Your dryer is fitted with systems that continuously perform checks during the drying process to take the necessary measures and warn you in case of any malfunction.

- Do not block the ventilation grills found on the plinth of the tumble dryer.
- When the laundry is being washed, the spin speed should be at the highest level possible. This will shorten the drying time and reduce energy consumption.
- Cleaning the lint filter periodically after each use; provides your product to work energy efficiently and dry in a suitable times.
- Your product can reach high level of outer surface temperatures during the cycle.
- Please select the most suitable programme for preventing the over drying and creasing possibility of your laundries.
- If you do not take out the laundry after the programme has ended, the 1-hour Anti Crease phase will automatically be activated. This programme rotates the drum at regular intervals to prevent creases.
- Please use the time drying programmes for the one piece of laundry or for a couple of clothes. Because humidity sensor may can not detect the real humidity level for less laundry.
- Do not load your machine with over-wet clothes.
- To use the dryer on the washing machine, a fixing part must be used between the two products. The fixing part must be attached by an Authorised Service Provider.
- Please make sure that your water tank is empty before each drying use.
- You can hear a continuous fan sound during the drying process.
- Condensed water is pumped into the water tank periodically during the drying process. You can hear a splash voice during this while.
- You may hear a clatter sound caused by zippers, clasps and buttons of your clothes.
- In order to not to have a damp laundries problem, please dry your big (like duvets, etc.) and small sizes of laundries separately.