



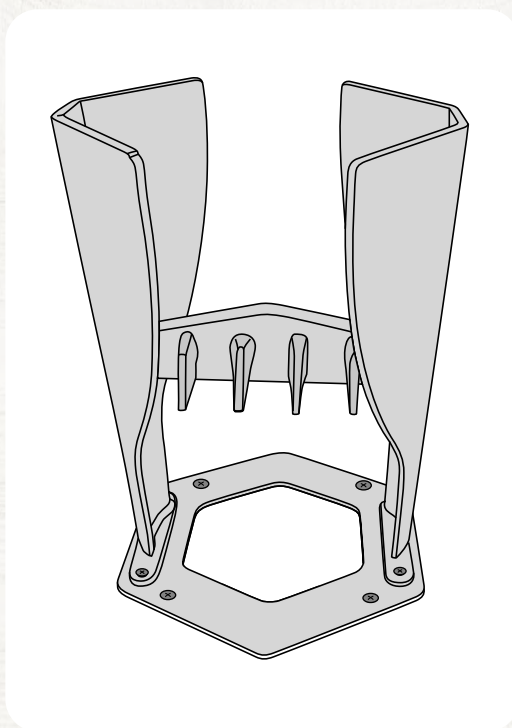
# PowerSplit XL

## Instruction Manual

**Manual Log Splitter for Kindling & Small Softwood Pieces**


Part of the PowerSplit Series – more leverage, more control, more power

Modell No. FPSDE0810



✓ Quality tested

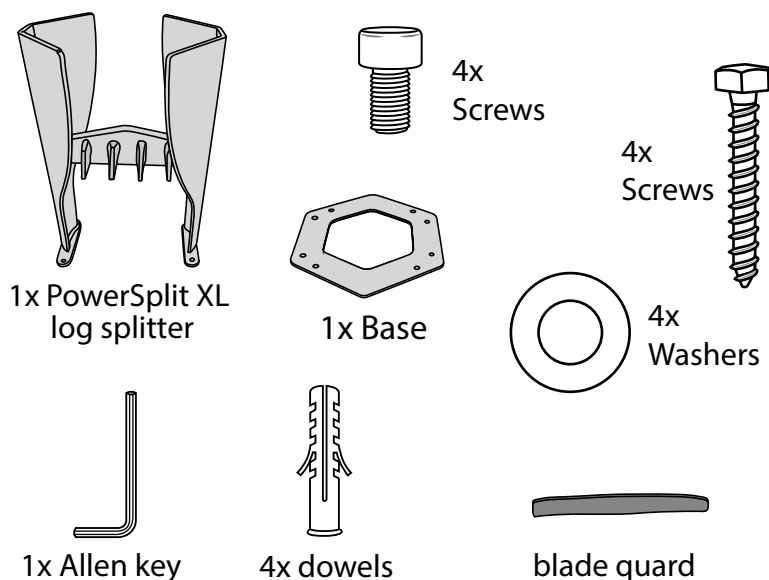
 Developed in Germany

 Easy wall installation



## 1 PACKAGE CONTENTS

- 1x PowerSplit XL log splitter (main body + blade)
- 1x Base (separate part)
- 4x Screws + 4x Lock washers (for base to main body assembly)
- 4x Screws + 4x Dowels (for optional floor/tree trunk mounting)
- 1x Allen key
- 1x Blade guard
- 1x Instruction manual



Woodshed



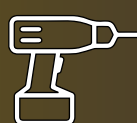
Terrace



Basement



Stove/Fireplace



Bricks



Concrete



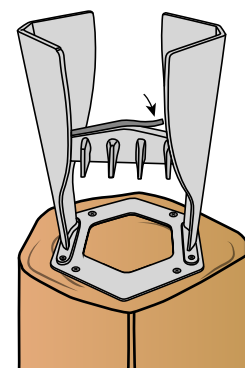
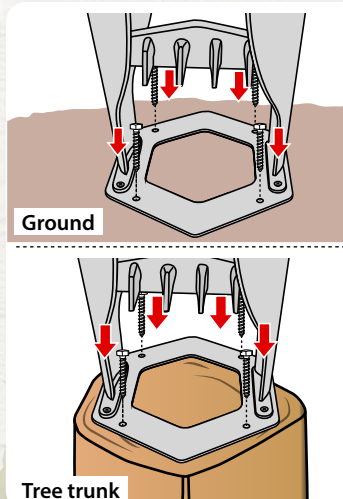
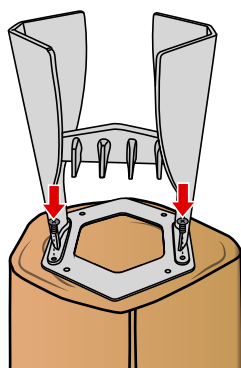
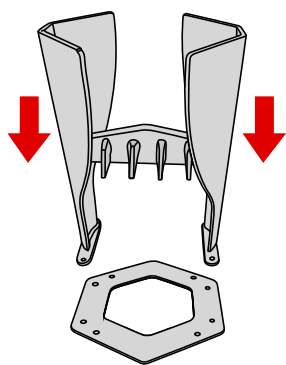
Wood

## 2 SAFETY INSTRUCTIONS

- Read the manual completely before use.
- Always wear gloves and safety glasses.
- Never hold the log with your hands in the striking area.
- Use only dry wood – no nails, screws or foreign objects.
- Always split one piece of wood at a time. Never stack or overlap logs.
- Keep away from children.

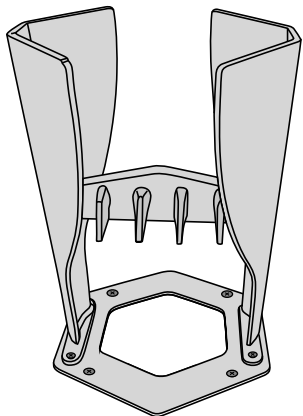
## 3 ASSEMBLY

1. Place the main body onto the base.
2. Secure firmly with 4 screws including lock washers.
3. Optional: Fix to the ground or a tree trunk using the provided screws and dowels.
4. Keep the blade guard in place until use.



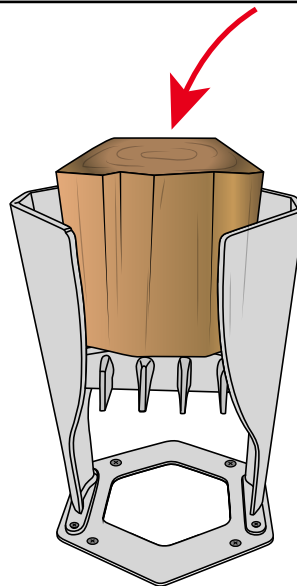
## 4 HOW TO USE – STEP BY STEP

1



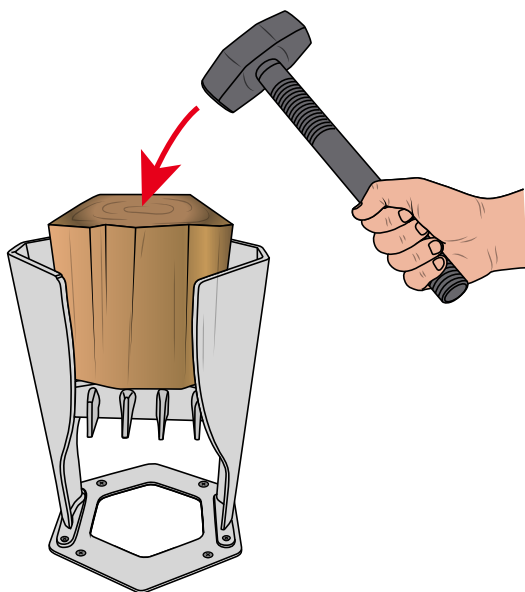
Place the splitter on stable, level ground.

2



Position the log in the center on top of the blade so it stands securely.

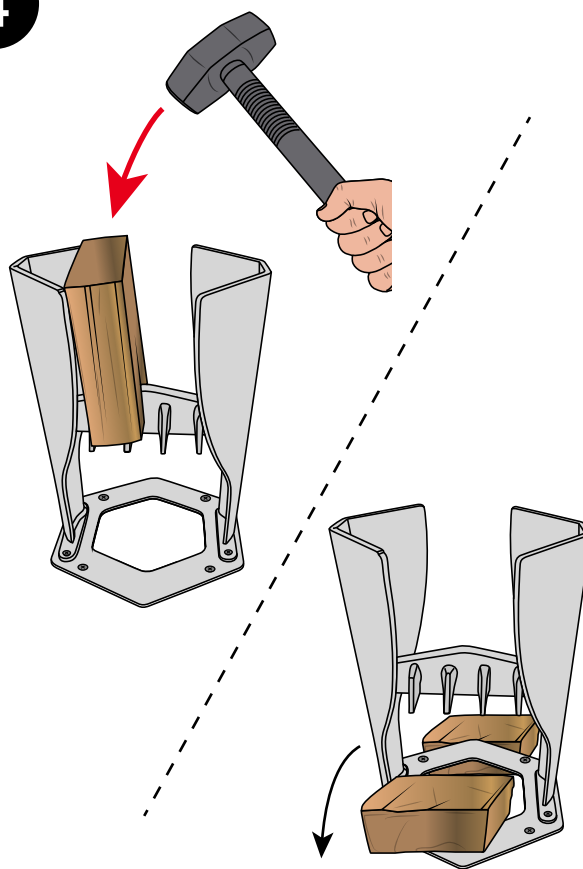
3



Remove your hands. Strike the log firmly with a hammer or another piece of wood.

**⚠ Tip:** The heavier the hammer, the less effort is required. We recommend at least 2 kg, preferably 3 kg or more, depending on the user's strength and height.

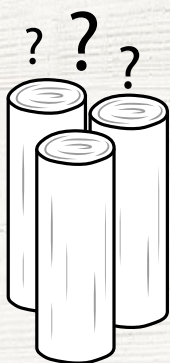
4



The log will split – repeat the process as needed.



## 5 SUITABLE WOOD



### ✓ Suitable for:

- Dry kindling and small logs up to approx. 20 cm diameter
- No fresh, wet, or resin-rich wood – splitting is not impossible, but requires significantly more effort. The splitter will withstand the stress.

## 6 CARE & MAINTENANCE

- Clean chips and dust after use.
- Store dry to keep your splitter sharp & ready for the next season.
- Sharpen the blade with a metal file if necessary.
- Inspect regularly – apply a bit of oil to moving parts to maintain performance.

## 7 TECHNICAL DATA

- Height: approx. 45 cm
- Diameter: approx. 22 cm
- Weight: approx. 11 kg
- Material: Steel, cold galvanized (anti-rust, durable)
- Blade: Steel, welded, resharpenable

## 8 CONTACT & SUPPORT

- Email: **info@forstix.de**
- Typical response time: within 24 h
- Spare parts & accessories available upon request

Visit [www.forstix.de](http://www.forstix.de) for more guides, tips & accessories.

FORSTIX® – Your reliable partner for wood splitting.