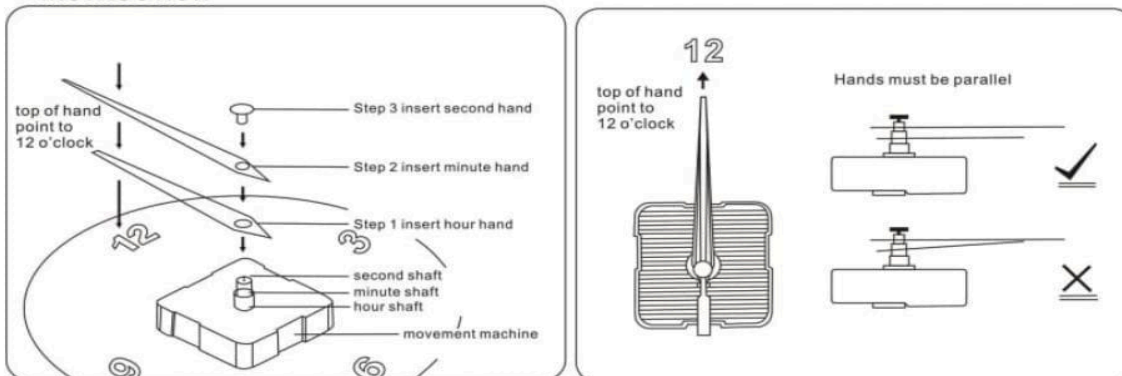




SAMIITO

Home Decoration

INSTRUCTION



Welcome to choose and purchase our products, thank you for your purchase and support.

To ensure that the clock works, please read the instructions and notes.

1. Please put 1 AA carbon battery in the battery compartment of the back of the clock. Do not use alkaline batteries, because the current output of the alkaline battery is too high, it will affect the accuracy and life of the clock movement.
2. Set the time and turn the movement rotation button (rotate to the right to adjust the time)
3. Sometimes the clock stops working due to logistics failure, please don't worry, please refer to the following related methods for wall clock failure.

Fault	Possible Cause	Solution
The pointer does not move	The battery is dead	Replace the battery
	Reverse the positive and negative polarity of the battery	Adjust the positive and negative directions of the battery
When the pointer is stopped, the movement gear does not work.	Inappropriate battery or insufficient power	Replace a new AA carbon-zinc battery
	The second head is pressed too tightly	Remove the second head and reload
	Pointers stuck together or rubbed against each other	Pull the pointer up until the hands are parallel and do not touch
	The pointer is deformed or loosely dropped	You can adjust the pointer according to this diagram.

Don't worry about any other questions! Please feel free to contact us and we will solve the problem for you as soon as possible.

Best wishes!