

TS8211

Competitive Atmos soundbar with dual built-in subwoofers and connected features



Strong bass with dual built-in subwoofers



Endless Entertainment



Premium sound



Wireless streaming from BT device



Wall mountable

2.1 Channel Configuration

Dual built-in subwoofers

Dolby Atmos

Ideal for 47" TVs and larger

HDMI 2.0 with eARC

HDMI input

Optical input / Bluetooth input

260W maximum audio power

39.4" x 2.6" x 5.0"

1000 x 65 x 128 mm

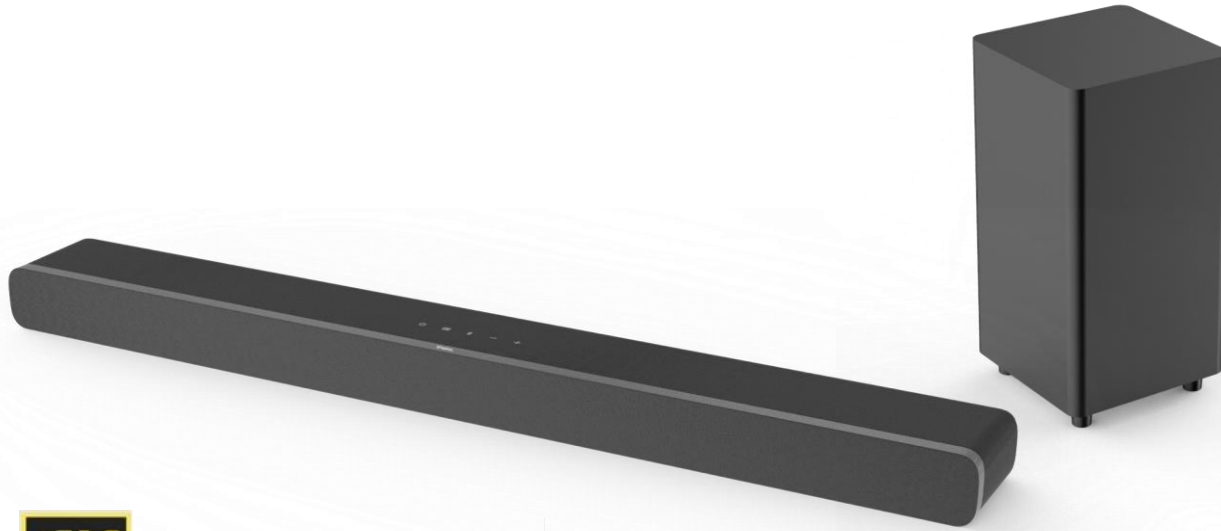


COMPATIBLE WITH
Dolby Vision



TS8212

Dolby Atmos 2.1.2 bar with up-firing drivers, subwoofer and Roku TV Ready



COMPATIBLE WITH
Dolby Vision



Deep bass with wireless subwoofer



Endless Entertainment



Premium sound



Wireless streaming from BT device



Wall mountable

2.1.2 Channel Configuration

Wireless subwoofers

Dolby Atmos

Ideal for 47" TVs and larger

HDMI 2.0 with eARC

HDMI input

Optical input / Bluetooth input

300W maximum audio power

Bar: 39.4" x 2.6" x 4.8"

1000 x 65 x 122 mm

Subwoofer: 7.9 x 13.8 x 7.9"

200 x 350 x 200mm