

INSTRUCTION

Packing List

1X Lamp 1X Power Adapter 1X Support Plate
1X Tape 3X Expansion Screws 3X Steel Screws

Step Dimmable



EN

LED WALL LIGHT

SKU	LB-W002	Control Mode	Touch Dimmable
Material	Plastic ABS	Dimension	52 X 7.5X 3 CM
Lighting Source	SMD2835 LED	Input Voltage	AC100-240V 50/60HZ
USB Output	DC5V Max.2A	Power	Max.4W
Lighting Brightness	Max.370Lm	Lighting Color	4000K
CRI	CRI>80	Waterproof Rate	IP20

ES

LUZ DE PARED LED

SKU	LB-W002	Modo de control	Táctil regulable
Material	Plástico ABS	Dimensión	52 X 7.5X 3 CM
Fuente de luz	SMD2835 LED	Tensión de entrada	AC100-240V 50/60HZ
Salida USB	DC5V Max.2A	Potencia	Max.4W
Brillo de la iluminación	Máx.370Lm	Iluminación Color	4000K
CRI	CRI>80	Índice de impermeabilidad	IP20

DE

LED-WANDLEUCHTE

SKU	LB-W002	Kontrollmodus	Einstellbare Berührung
Material	ABS-Kunststoff	Dimension	52 X 7.5X 3 CM
Lichtquelle	SMD2835 LED	Eingangsspannung	AC100-240V 50/60HZ
USB-Ausgang	DC5V Max.2A	Strom	Max.4W
Helligkeit der Beleuchtung	Max.370Lm	Beleuchtung Farbe	4000K
CRI	CRI>80	Index der Wasserdichtigkeit	IP20

IT

LUCE A PARETE A LED

SKU	LB-W002	Modalità di controllo	Tocco regolabile
Material	Plastica ABS	Dimensione	52 X 7.5X 3 CM
Sorgente luminosa	SMD2835 LED	Tensione d'ingresso	AC100-240V 50/60HZ
Uscita USB	DC5V Max.2A	Potenza	Max.4W
Luminosità dell'illuminazione	Max.370Lm	Colore dell'illuminazione	4000K
CRI	CRI>80	Indice di impermeabilità	IP20

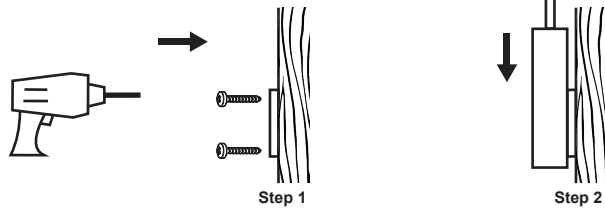
FR

APPLIQUE LED

SKU	LB-W002	Modes de contrôle	Touches réglables
Matériau	Plastique ABS	Taille	52 X 7.5X 3 CM
Source lumineuse	SMD2835 LED	Tension d'entrée	AC100-240V 50/60HZ
Sortie USB	DC5V Max.2A	Puissance	Max.4W
Luminosité de l'éclairage	Max.370Lm	Couleur de l'éclairage	4000K
CRI	CRI>80	Indice de résistance à l'eau	IP20

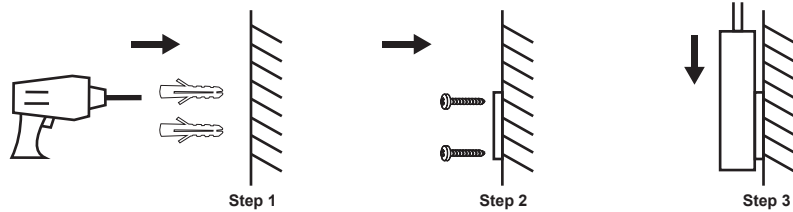
Installation Methods

Installation method 1 Wooden Wall



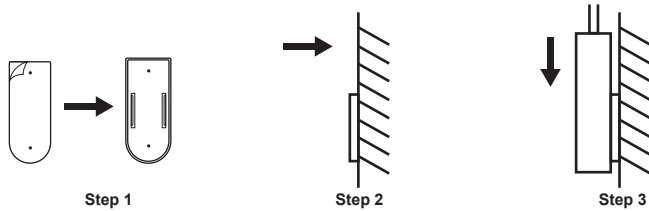
Fix the support plate on the wooden surface with steel screws, and then slide the lamp base onto the support plate.

Installation method 2 Non-wooden Wall



Drill 2 holes $\varnothing 5\text{mm}$ in the wall, insert the expansion screws into the wall, then fix the support plate on the wall with the steel screws, and then slide the lamp base onto the support plate.

Installation method 3 Any Type of Flat Wall



Use tape to stick the support plate on the required surface, and then slide the lamp base onto the support plate.

Imported By:
Ningbo Jiangbei Xinmu Dianzi Keji Youxian Gongsi
Zhejiang Sheng Ningbo Shi Jiangbei Qu Jiangbei
Da Dao 99 Hao 61 Zhuang 5-41 Shi,
Ningbo, 315000, China

Manufactured By:
Ningbo Jiangbei Realshine Electronics Co., Ltd
4F, #1 Building, No.6 Hongxing Rd, Ningbo, China

UKCAREP KOVA ASSOCIATES LTD
72a Kingston Road, Portsmouth,
Hampshire, PO2 7PA, United Kingdom
KOVA.Compliance@outlook.com

ECREP Like Sun GmbH
Planckstr.59 45147 Essen
ec-connection@web.de

Enuotek®

✉ service@enuotek.com

🌐 www.enuotek.com

Made in China

